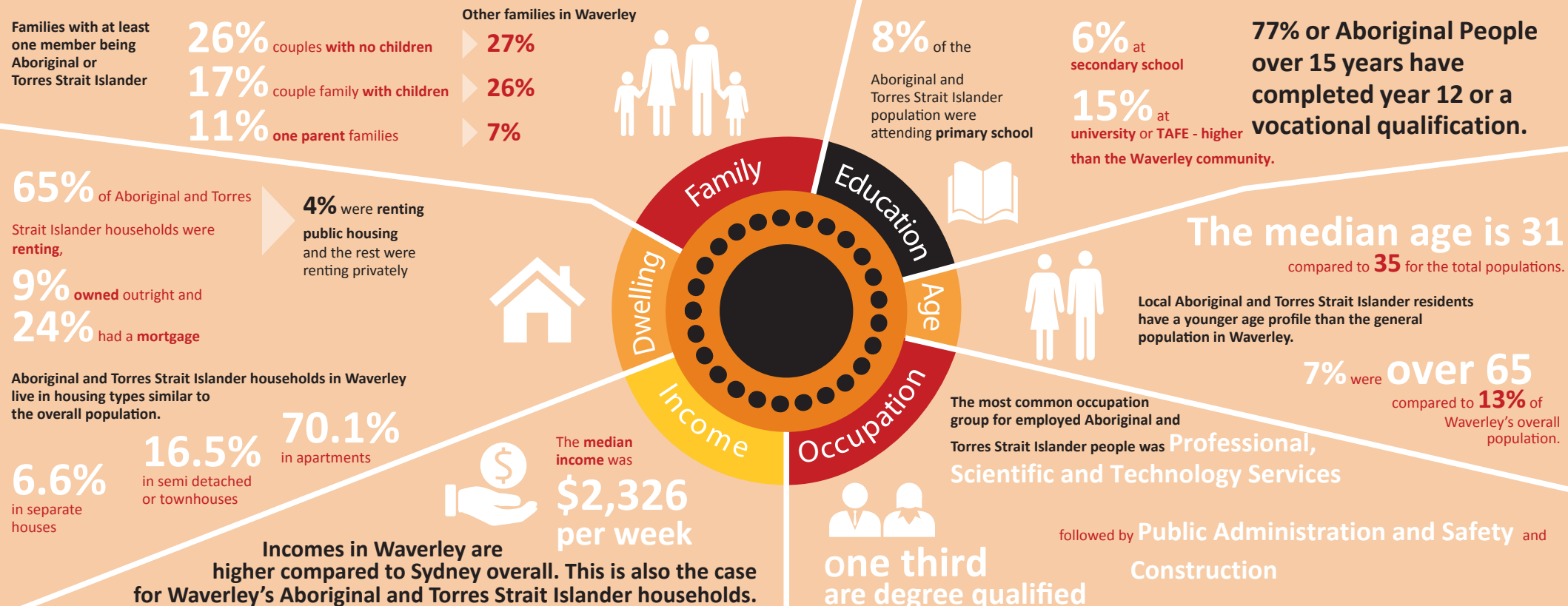


Waverley's Aboriginal and Torres Strait Islander Profile

In 2021, 275 Waverley residents (0.4%) identified as being Aboriginal or Torres Strait Islander.

Waverley Council acknowledges the Bidiagal, Birrabirragal and Gadigal people, who traditionally occupied the Sydney Coast and we acknowledge all Aboriginal and Torres Strait Islander Elders past and present.



Waverley values and supports Aboriginal and Torres Strait Islander peoples through:

- Implementation of Waverley's Reconciliation Action Plan.
- The Waverley Reconciliation Action Plan Advisory Committee.
- Respecting and protecting Aboriginal and Torres Strait Islander cultures and heritage.
- Celebrating cultures and history through regular events, activities and education.
- Providing employment for Aboriginal and Torres Strait Islander peoples and opportunities for Aboriginal businesses.



W A V E R L E Y
C O U N C I L

