

# Environmental Action Plan

2025-2035

second  
nature



WAVERLEY  
COUNCIL



# Contents

<b>A Message from our Mayor</b>	<b>3</b>
<b>1. Climate Action</b>	<b>5</b>
<b>1.1 Climate Resilience</b>	<b>5</b>
Goals	<b>5</b>
How are we doing	<b>6</b>
Programs and projects that will help us progress towards our goals	<b>8</b>
<b>1.2 Net Zero</b>	<b>9</b>
Goals	<b>9</b>
How are we doing	<b>10</b>
Targets we will measure to progress towards our goals	<b>11</b>
Programs and projects that will help us progress towards our goals	<b>12</b>
<b>2. Nature Positive</b>	<b>14</b>
Goals	<b>14</b>
Targets	<b>15</b>
How are we doing	<b>16</b>
How will we achieve our Targets	<b>19</b>
Programs and projects that will help us progress towards our goals	<b>20</b>
<b>3. Circular Economy</b>	<b>21</b>
Goals	<b>21</b>
Targets	<b>22</b>
How are we doing	<b>23</b>
How will we achieve our Targets	<b>24</b>
Programs and projects that will help us progress towards our goals	<b>25</b>

# A Message from our Mayor

Waverley Council was one of the first local governments to formally articulate a strategic environmental vision for its organisation and community which included a detailed and funded 10-year plan to realise its goals.

Now in its sixth iteration, this Environmental Action Plan (EAP) includes medium and longer-term targets and actions to realise our environmental goals in the following areas:

- 1. Climate Action** – ensuring our assets, services and community can adapt and respond to climate change while driving down emissions and energy costs for our community and Council operations
- 2. Nature Positive** – protecting, restoring and enhancing our natural environment, green spaces and parks, including marine values
- 3. Circular Economy** – minimising pollution, managing waste and recycling and recovering materials to transition to a Zero Waste community

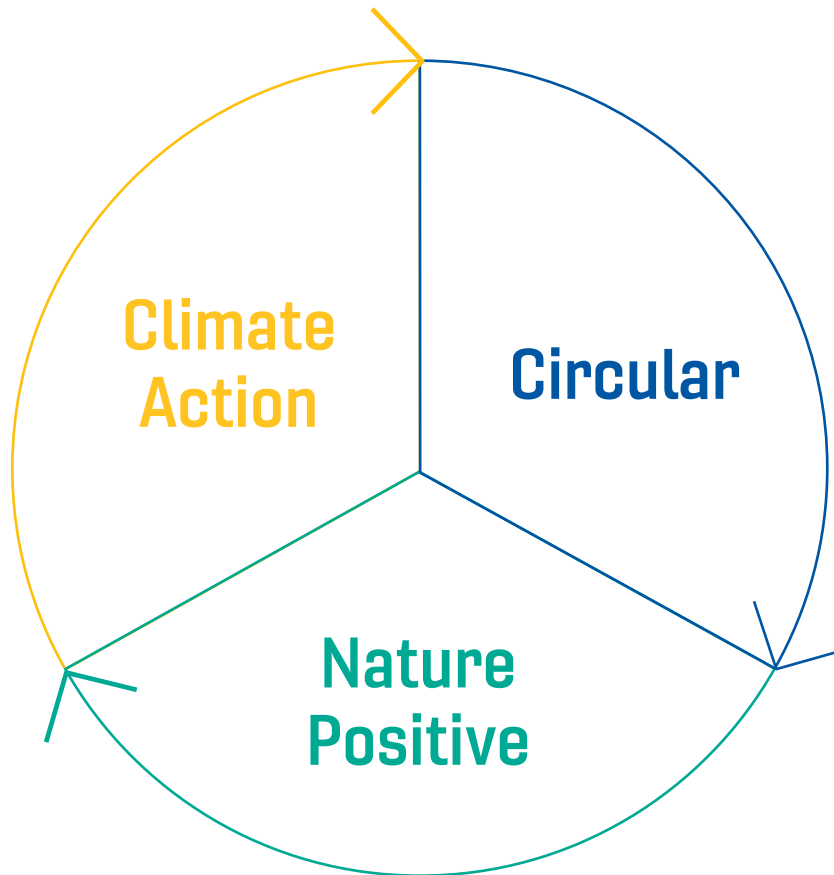


To reflect aspirations of the community, it's important to ensure that environmental goals are achieved through specific environmental projects but also through Council wide activities and opportunities that inspire and harness the values and motivations of our local residents, businesses and visitors. We will continue to be a leader in climate action and strive to achieve our ambitious Net Zero emissions goals for our community and Council operations, while taking steps to respond to and prepare for changing climate impacts. Our beaches and coastline are loved and need to be looked after. As a coastal council, it's vital we continue to invest in stormwater quality, litter management and to manage the impacts of urbanisation and development on our waterways.

Tackling global environmental threats requires action through local systems such as transport use, waste generation and patterns of consumption, and Council cannot do this alone. We will continue to provide sustainability education to equip our community with the knowledge and resources they need. This includes business sustainability support, waste and recycling guidance, solar and electrification opportunities (including batteries), vegetation management and species information as well as grants to celebrate and support community-led environmental action.

**Will Nemesh,**  
**Mayor of Waverley**

# Themes and Targets



## Climate Action

- Net Zero by 2030 – Council
- Community Net Zero by 2035
- Secure water and energy supply
- Manage coastal vulnerabilities
- Climate Risks assessed and addressed



## Circular

- Zero waste by 2050
- 80% Resource recovery by 2030
- 50% Organics reduced by 2030
- Water pollution minimised



## Nature Positive

- 35% Green Cover by 2032
- 20% Remnant vegetation in good condition by 2032
- Improve marine biodiversity
- 0% increase in water use
- 1000 habitat gardens





# 1. Climate Action

## 1.1. Climate Resilience

### Goals

1

Manage climate risks to assets and operations

2

Enhance stormwater harvesting and recycling to secure environmental and asset performance in a warming climate

3

Leverage Investment through projects and controls – including through the Coastal Management Program and Localised Flood mapping and responses

4

Increase Green Cover and permeability to mitigate urban heat loads and localised flooding

# How are we doing

As part of Waverley's response to the Climate Emergency, Council established an internal Resilience Committee and developed the Waverley Resilience Framework in 2022. This helps to coordinate and monitor progress across departments, identify climate risks and help realise our resilience goals of improved and equitable access and opportunity, reduced climate risks, improved social cohesion, emergency preparedness and resilient assets and operations.

Council's Resilience Framework strengthens our capacity to survive, adapt and thrive in the face of increasing uncertainty and disruptions. It has guided our Climate Change Risk assessment, informed by a Climate Change scenario based on locally relevant high emissions climate projections and data including the NSW and ACT Regional Climate Model (NARClm), CSIRO projections and a regional sea level rise study conducted by BMT Global in 2022.

Going forward Waverley can expect:

- Average year-round temperatures will increase yearly
- Extreme heat days (over 35°C) will occur more frequently
- Nights will also be warmer on average
- Summer will be longer, and winter will be shorter
- More energy needed for cooling and less needed for heating
- Extended periods of drought
- Changing seasonality of rainfall with alarming decreases in winter (-25%) and spring projected by 2030 under current emissions levels
- Intense rainfall events likely to increase, particularly in autumn
- Increased likelihood of storm activity, particularly in summer and autumn
- Increased air quality risks associated with increased bushfire risks regionally
- Increased risk of coastal inundation, especially when storm surge conditions and sea level rise risks combine.



*Photo: Emmanuel Godard*



Resilience is a key pillar of Waverley’s Community Strategic Plan and critical climate related risks have been incorporated into the Enterprise Risk Management System, noting that the impacts of climate change are far reaching and interact directly with operational, Asset and Infrastructure Management and Community Risks, and indirectly with transitional risks, such as financial sustainability and service delivery.

## Waverley’s Resilience Framework



# Programs and projects that will help us progress towards our goals



## Community

- Providing support for the Community to take and lead environmental action and adapt and respond to environmental change through key programs such as Second Nature Environmental Education and engagement activities, including Webinars, workshops and citizen science activities
- Awarding and leveraging grants for community led environmental action, that support EAP targets
- Boosting support to reduce climate vulnerability through knowledge sharing and actions to learn and share local climate knowledge, and resilience development controls and approvals (in residential and commercial)
- Meeting our Community Water conservation targets, of no increase on 2005/06 levels and maintaining Council's Water Quality ratings (swimmability) to a high standard



## Council

- Monitor and review Climate Change Risks across departments, based upon the best available science, and reflected in the Strategic Asset Management Plan
- Continue our advocacy and collaboration for actions that maintain a Safe Climate
- Complete a Waverley Beaches Coastal Management Program by 2027 to ensure escalating coastal risks are planned for and managed, including adapting our seawalls to minimise inundation where required
- Continue sustainable water and energy management at our buildings and facilities, including maximising water efficiency, the installation of smart irrigation systems at our parks and real time leak detection
- Proactively plant and maintain trees, shrubs and groundcovers to restore and increase our canopy and greening in the public domain





## 1.2. Net Zero

### Goals

1

Net Zero  
community  
emissions  
by 2035

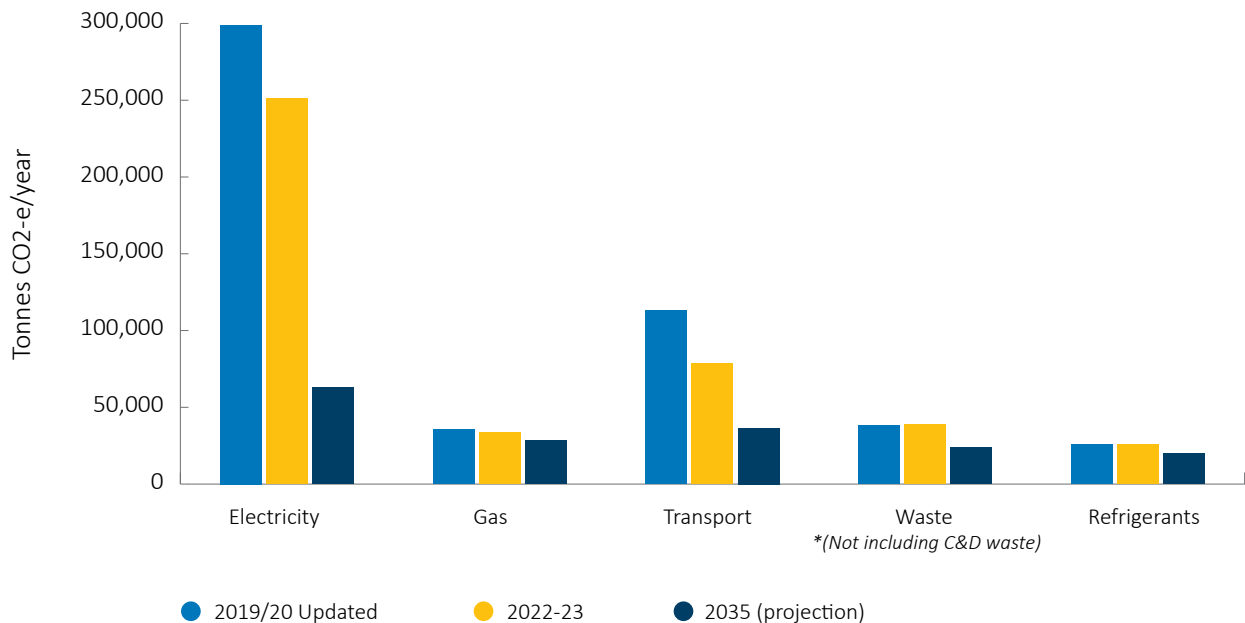
2

Net Zero  
Council  
emissions  
by 2030

3

100%  
Renewable  
Electricity for  
Council

## Waverley Community GHG emissions (Tonnes CO<sup>2</sup>-e) 2019/20, 2022/23 and 2034/35



## How are we doing

**For Council to achieve Net Zero emissions by 2030 means reducing greenhouse gas emissions as much as possible and offsetting any hard-to-abate, residual emissions.**

In July 2022, Council signed an Electricity Services Agreement for 100% renewable electricity for up to 9 years, effectively eliminating electricity related emissions from Council operations. Since 2020/21 Council has achieved a reduction in emissions every year. In 2023/24, Council achieved a 5.4% reduction in emissions from continued and consistent energy management across all council sites including street lighting.

A full transition towards eliminating emissions from Council operations will require removing gas from all

plant and facilities and changing all of Council's fleet vehicles to electric vehicles powered by renewable electricity. Council has approximately halved our annual natural gas consumption over the last four years and now only has a small number of sites to remove gas appliances. In 2024/25, working with AusGrid, Council will significantly reduce our electricity use through the replacement of main road streetlighting with efficient LED luminaires. Going forward Council will work to calculate and report on embodied emissions, in line with reporting requirements from Australian and New South Wales governments.

While community greenhouse gas emissions are reducing, there will be significant effort required for the community to achieve a net zero greenhouse gas reduction by 2035. It will require rapid electrification of the grid, the phase out of fossil fuels, advocacy for 100% renewable energy in the grid, support for installing solar and batteries and renewable energy purchasing and the electrification of our built environment and transport systems. For this to occur will require ongoing community education and engagement and collaboration at all levels of government and across the community.



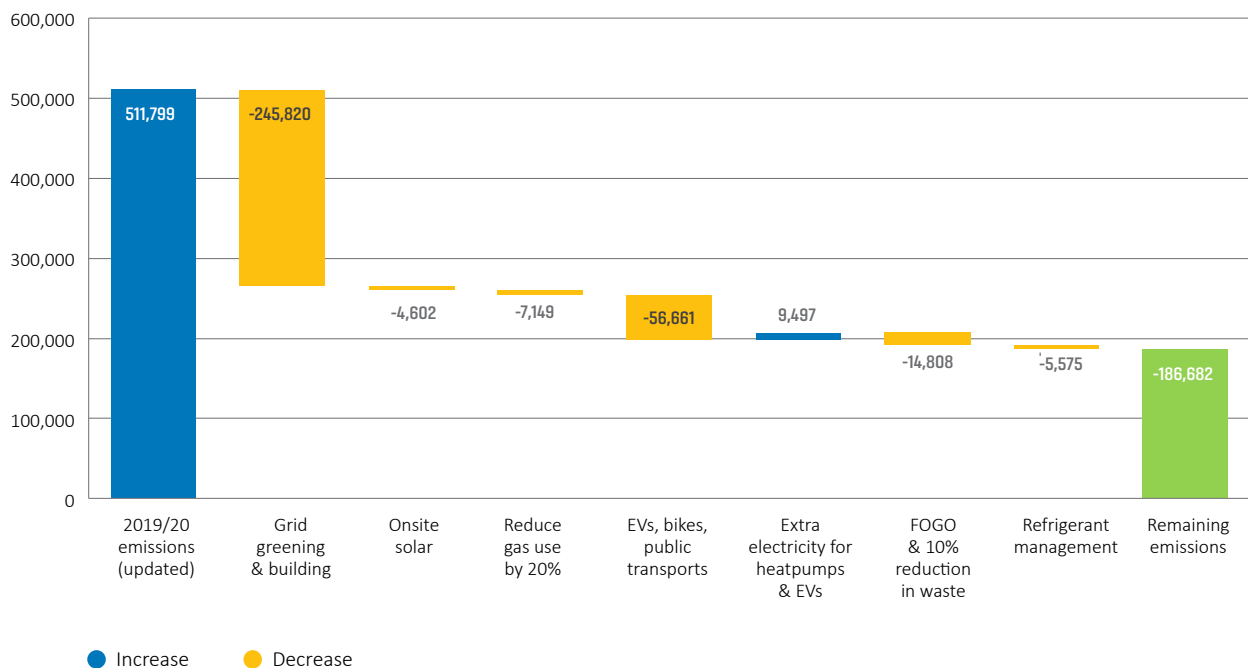


## Targets we will measure to progress towards our goals

- Advocate for the rapid decarbonisation of the NSW electricity grid through increased uptake of renewable energy.
- Support the electrification of Homes, Businesses and Transport and rapidly moving to 100% renewable electricity
  - All existing homes and businesses to become 20% more energy efficient by 2035. A 20% reduction in fossil gas in all existing homes and businesses by 2035 and all new buildings all electric.
  - 60% of all vehicles will be electric by 2035.
- Continual increase of solar, uptake of renewable energy and batteries across the LGA
  - 65% of houses will have solar and 20% of those with batteries by 2035.
  - 15% of apartment buildings and 5% of those with batteries by 2035.
  - 20% of businesses with 5% of those with batteries by 2035.
- Reduction in car use in favour of active transport, such as public transport, cycling and walking.
  - 20% reduction in VKT
- Measure and report embodied emissions

# Programs and projects that will help us progress towards our goals

**Net Zero Community Target, Waverley 2019/20 to 2034/35**

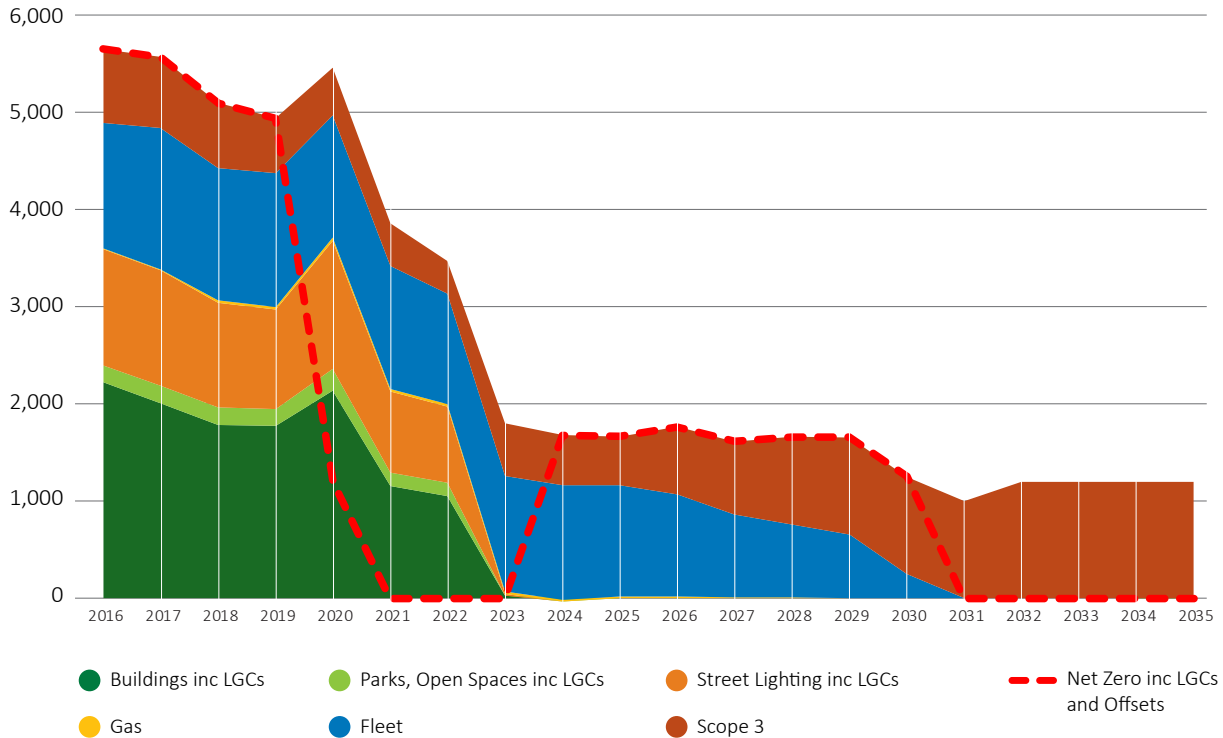


## Community

- Advocate for and implement planning changes to ensure that all new buildings built in Waverley are all- electric.
- Support and facilitate Solar and Battery uptake in all residential dwellings and businesses including strata, social housing and houses in Heritage Conservation Areas.
- Facilitate the uptake of 100% renewables electricity for residents and businesses through onsite solar, subscriptions to Green Power or other renewable electricity purchases.
- Accelerate the removal of natural gas appliances and electrification of homes, and businesses through Sustainability Rebates and the Building Futures Program.
- Support the delivery of a 20% reduction in common area energy consumption across all 1500 apartment buildings and commercial buildings in Waverley through the Building Futures Program.
- Work with the NSW and Federal Government, Community Housing Providers and Sydney Water to ensure that all social housing is energy and water efficient, affordable and thermally safe for tenants.
- Support and facilitate zero emissions mobility through an extensive public electric vehicle (EV) charging network (including off-street charging) to reach the target of 60% of all vehicles in Waverley to be electric by 2035.
- Support and facilitate a 20% reduction in Vehicle Kilometres Travelled (VKT) through increases in walking, cycling and public transport.



## Waverley Council Net Zero Emissions Pathway



## Council

- Achieving Net Zero Council greenhouse gas emissions in 2030
- Implementation of the Zero Emissions and Efficiency Action Plan 2024-2029
- Council fleet transition to electric by 2030 focussing on passenger vehicles, light commercial then heavy vehicle fleet
- Investigate options to increase battery storage on Council assets to support the transition to a 100% renewable electricity grid
- Deliver Waverley Bike Strategy
- Deliver Waverley Walking Strategy
- Monitor and report Scope 3 emissions including emissions from waste
- Continue to deliver the Corporate Sustainability Leadership program to embed environmental sustainability throughout Council processes and actions
- Invest in Australian emission reduction projects from 2030 onwards to account for residual scope 3 emissions and any emissions not eliminated



## 2. Nature Positive

Protecting and enhancing local bushland, parks, trees and habitat

### Goals

1

Protect and increase our biodiversity, parks, urban canopy cover and habitat areas

2

Ensure no loss of remnant native vegetation

3

Improve marine biodiversity

4

Protect and secure water supplies

# Targets



20% of remnant native vegetation is in good condition



35% Green Cover (canopy and shrub) by 2032



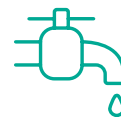
Increase public space permeability



1000 Habitat gardens by 2030



0% Increase in water use in 2030 for the community (based on 2005/06 community use of 6,208,915Kl)

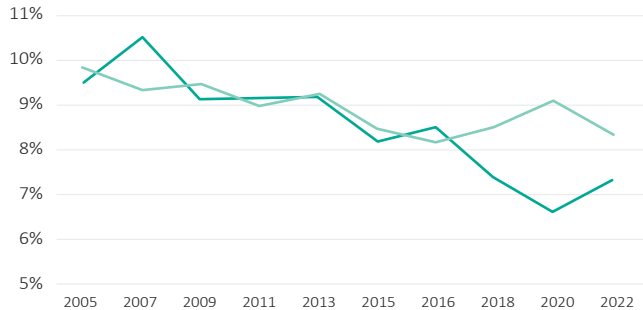


0% Increase in water use in 2030 for Council (based on 2005/06 Council use of 62,000Kl)

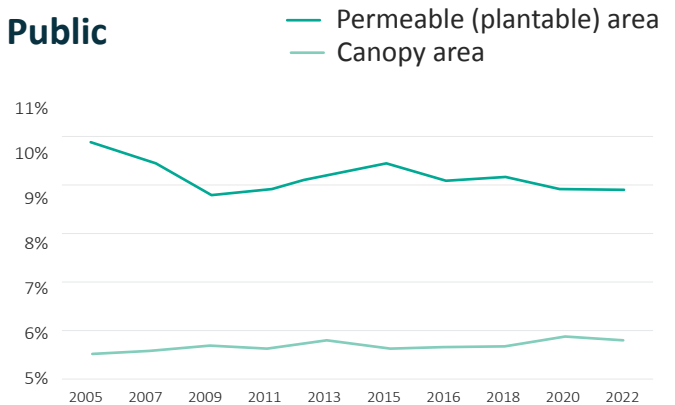


# Permeability and Tree Canopy

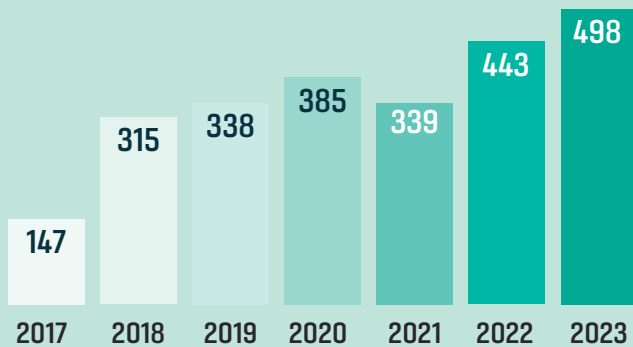
## Private



## Public



## Public Trees planted per year



Target:

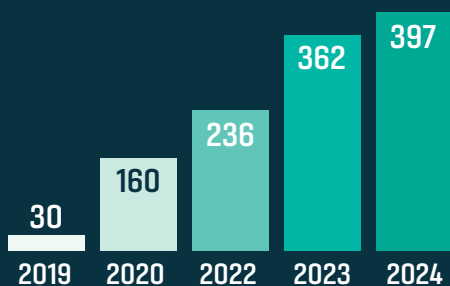
**540**



## Habitat Gardens

Target  
by 2032:

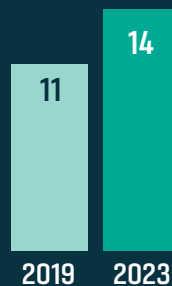
**1000**



## Community Managed Gardens

Target  
by 2032:

**25**



# How are we doing

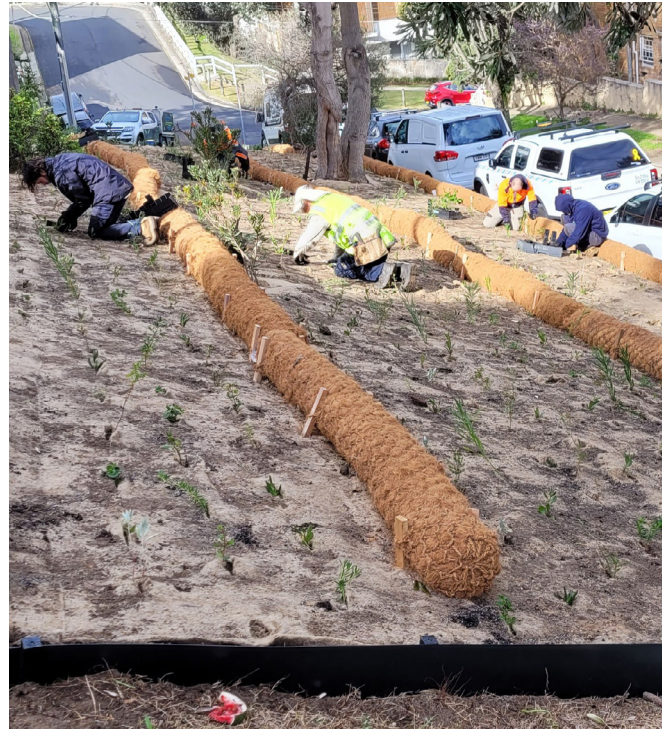
Waverley has committed to becoming Nature Positive which means reversing the loss of natural systems so that species and ecosystems can be restored and recover.

Council adopted an Urban Greening and Cooling Strategy in 2023 to guide decisions and investments that coordinate the protection and management of urban trees and vegetation to achieve new targets of 35% Green Cover by 2032, comprising of 20% canopy cover and 15% shrub and ground covers. This includes approximately 6 hectares of remnant native vegetation across 12 main sites.

We are managing the critically endangered plant community Eastern Suburbs Banksia Scrub (ESBS), protected under Commonwealth and State legislation on private and public land adjoining York Road and within Queens Park. Council has also supported the natural regeneration of a population of the threatened species *Acacia terminalis* subsp. *Eastern Sydney* (Waverley's only population of this species) back from the brink of extinction.



*Remnant vegetation at Tamarama*



*Planting woody meadows on steep slopes*

Through the implementation of the Biodiversity Action Plan: Remnant Sites 2015–2020, the area of remnant native vegetation in good condition in 2020 (9%) was more than double of that recorded in 2015 (4%). However, a number of sites declined in both their remnant extent and condition due to impacts from Council projects and weed incursions. Council's bushland restoration projects in Bronte Gully, Tamarama Gully and Thomas Hogan Reserve are progressing, and bushland restoration projects have also been delivered on steep slopes at Bulga Rd, Calga Reserve and Carlisle St where the Woody Meadow trial is underway.

Council's Living Connections program has successfully improved habitat and connectivity in 436 private gardens. The program has been expanded to cover the entire LGA with a particular focus on key biodiversity areas and habitat corridors.





In 2024 almost 500 new street trees were planted, and there are now 121 trees on the Significant Trees Register. These trees are subject to stronger protection measures, although the relationship between listing and reduced vandalism requires continued monitoring and evaluation.

Vegetation vandalism and targeted vegetation removal – including for development, infrastructure upgrades, and view enhancement - continue to pose a significant threat to remnant vegetation, habitat and canopy on private land. Responding to this with strengthened compliance actions, a cross-departmental operational approach, and enhanced deterrent measures may reduce further losses.

Our open spaces, street trees, parks and living infrastructure cannot be maintained or protected without careful management and conservation of our water resources. Council will continue to manage and improve our water efficiency and water supplies, which includes securing localised recycled water through our extensive groundwater and stormwater recycling systems. These systems enabled our amenities to run on recycled water, our irrigation systems to be resilient against drought and our potable water resources to be sustained and optimised for our operations and community.

Waverley Council manages Gross Pollutant Traps (GPTs) at our beaches. Future development, population and visitation increases, and climate change will impact coastal assets, water quality, local biodiversity, and amenity, and place increasing pressures on local resources.



*Photo: David Finnimore*





## How will we achieve our targets

- Protect native animals and habitat (including Marine)
  - Monitor and evaluate populations of representative species (Microbats, Eastern Blue-tongue Lizard, Superb Fairy-wren, New Holland Honeyeater, ESBS and Acacia terminalis subsp. Eastern Suburbs)
  - Monitor and build awareness of local marine biodiversity and protections
  - Mitigate the impacts of invasive species on local biodiversity (flora and fauna)
- Restore degraded landscapes and connectivity
  - Continue the restoration of Bushland at Bronte Gully, Tamarama Gully and Thomas Hogan Reserve
  - Maintaining native vegetation on Steep Slopes and identify opportunities to continue to expand native bushland habitat on public land
- Empower community stewardship to protect and support biodiversity
  - Deliver habitat gardening guidance and support, including the Living Connections program
  - Manage, facilitate and support Bushcare volunteers and Bushcare groups
- Biodiversity support (including through development and invasive species controls)
  - Assess and address biosecurity risks
  - Assess Landscape Plans for Development Applications to increase habitat on private lands
- Build community capacity
  - Provide Citizen Science opportunities to foster knowledge and environmental values in aquatic and terrestrial environments
  - Facilitate the community to minimise water use through water efficiency and recycling
- Integrate nature into Decision Making
  - Ensure all Council policies, programs, and projects consider their impacts on biodiversity and work towards nature-positive outcomes



# Programs and projects that will help us progress towards our goals



*Bronte Waterfall Bushcare Group*



*Glenayr Ave Raingarden*

## Community

- Bushcare Volunteer Program
- Living Connections Program
- Supporting and promoting gardening in public places including verge and Cemetery gardening
- Citizen Science, urban ecology awareness engagement and coastal management programs
- Support water conservation and quality initiatives, including through development controls
- Working with neighbouring councils, residents and Businesses to optimise water use enabling Sydney Water's WaterFix and targeting efficiencies in large strata buildings
- Marine biodiversity knowledge sharing, advocacy and engagement

## Council

- Implementation of the Urban Cooling and Greening Strategy
- Implement the Biodiversity Action Plan - Remnant Sites 2022-2031
- Bushland Restoration programs and the implementation of restoration plans at Bronte Gully, Tamarama Gully and Thomas Hogan Reserve
- Implementation of the Steep Slopes Program and provision of native plantings
- Maintain and optimise recycled water use at Bronte, Tamarama, Bondi Beach, Barracluff Park and Waverley Park and for use on Council's living infrastructure.
- Actively monitor Council's water use to quickly identify leaks and improve water efficiency.
- Ensuring Water Sensitive Urban Design is embedding in design of Major Projects. such as future bike paths to support urban greening and canopy on Council streets
- Maintain and build additional stormwater quality improvement devices in parks and streets to remove sediment and pollutants and protect water quality at our beaches and protect marine biodiversity and recreation.



## 3. Circular Economy

Moving towards Zero Waste Community

### Goals

1

Eliminate and divert  
waste through circular  
economies

2

Enact Council  
Policy to align with  
NSW Waste and  
Sustainable Materials  
Strategy targets

3

Protect Water  
quality and  
reduce urban  
pollution



# Targets



10% reduction in total waste generation per person by 2030



80% of average recovery rate from all waste streams diverted from landfill by 2030 (this includes commercial)



'Good' water quality rating at our beaches



50% reduction in organic waste sent to landfill by 2030



60% reduction in litter by 2030

# How are we doing

Council has prepared and exhibited a Resource Recovery and Waste Strategy that outlines a pathway towards Waverley becoming a zero-waste community. It captures local circular economy opportunities, meets our regulatory responsibilities, and provides education and access to best-practice waste management and avoidance services that are attractive to our residents, businesses and visitors.

A zero-waste, circular community avoids waste generation and ensures discarded materials are redirected to become resources for other processes and uses, limiting negative impacts to land, air and water. Since 2016/17 Council has been able to increase the total waste recovery, that is, diversion from landfill from 32% to 58%. As of July 2017, Council's kerbside red-lid bin waste, including food waste, has been processed through a new Mechanical and Biological Treatment (MBT) facility at Woodlawn whereby the organics material in the red bin is able to be extracted and reused for land remediation. This is on top of the resource recovery that occurs through the use of the garden organics (green bin), paper and recycling (blue bin) and plastics and containers (yellow bin) waste streams. This is one of several landfill diversion strategies that Council is undertaking in order to meet our target resource recovery rate of 80% by 2030.

In 2023, Council collected roughly 27,323 tonnes of residential waste from more than 10,473 households through kerbside bins. A kerbside audit in 2023 revealed that about 58.5% of materials in the red-lidded bin could be recovered and reused or processed into new materials.



*Volunteer Repairer from Council's regular Repair Cafe*

In 2024, Council launched a Food Organics Garden Organics (FOGO) trial in selected streets across the Waverley LGA and will be looking to expand this so that it is available to all residents.

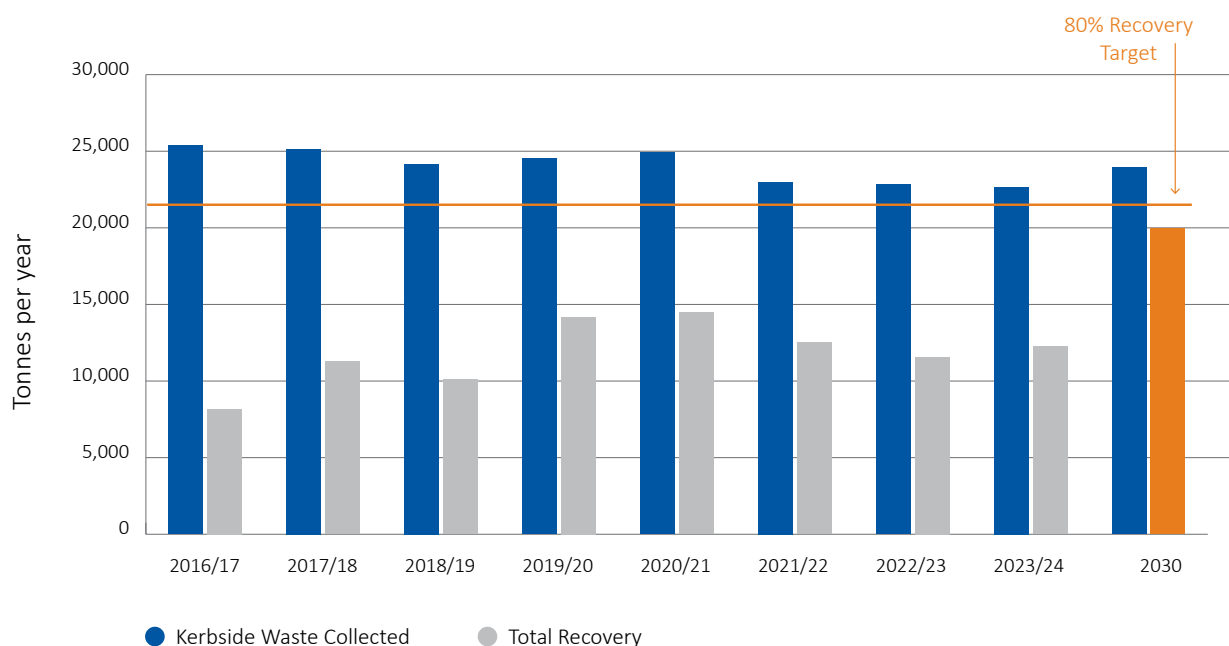
Increasing recycling rates and reducing contamination are ongoing programs for Waverley and will continue with a focus on apartments. Council has also been actively working with the community to promote the circular economy and reduce the amount of waste and recycling being generated. This has been through the preparation of the Bondi Junction Circular Economy Roadmap and the implementation of projects such as regular Repair Cafés.

Council also maintains recycled water schemes at our beaches which capture, filter and reuse stormwater, protecting water quality at our beaches. Litter is reduced in Waverley and on our coast through the provision of infrastructure, regular cleaning as well as education and when required, enforcement.

The NSW Government Beachwatch program measures the water quality at Bondi, Bronte and Tamarama Beaches. Except for Bronte in 2023/24, recently all of our beaches have been rated good. Despite this there are water quality issues at our beaches after rain due to stormwater run-off and also in our receiving catchments of Sydney Harbour and Centennial Parklands.

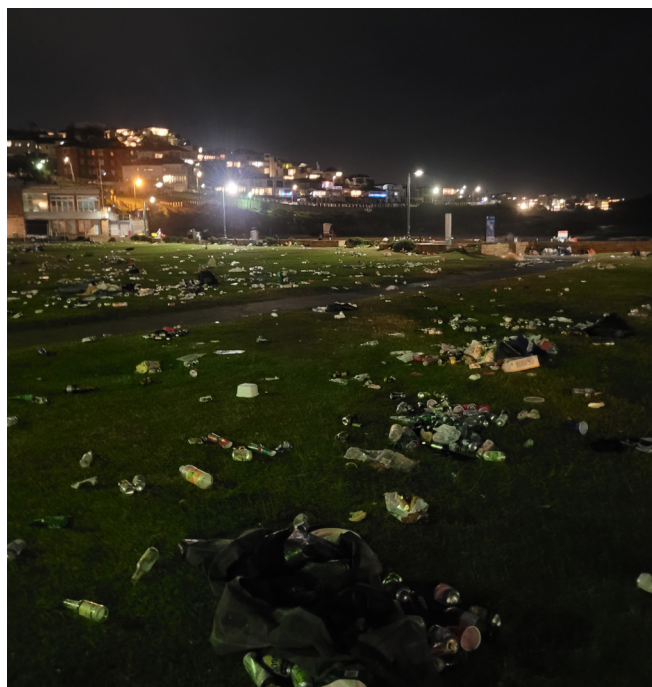
Waverley Council is actively working with Sydney Water to connect the remaining areas in Watsons Bay, Vaucluse and Rose Bay that aren't connected to the sewerage treatment system so that untreated effluent no longer enters the coast at Diamond Bay and near to Eastern Reserve.

## Residential Waste and Recovery



## How will we achieve our targets

- Implementing policies and programs that transition to circular principles and diversion from landfill
- Minimise waste generation and increase resource recovery and material circularity
- Recycle more and recycle better
- Reduce food and garden organics sent to landfill
- Providing options for responsible disposal of problem wastes
- Reducing litter and illegal dumping through education and enforcement
- Lead by example and embed Circularity and Sustainable Procurement in Council operations, events and capital works
- Eliminate waste water flows into our waterways



*Litter at Bronte Beach*





## Programs and projects that will help us progress towards our goals

- Adopt and Implement the Waverley Resource Recovery and Waste Strategy - Towards a Circular and Zero Waste Community 2025-2032
- Support initiatives that maximise waste avoidance, reuse, repair, and the sharing economy
- Community education and advocacy for waste avoidance and reuses
- Apartment Recycling Improvement Program with a focus on reducing contamination of recyclables
- Facilitate and increase source separation of recyclables and organic materials from new and existing residential and mixed developments
- Implement a residential FOGO collection service across the Waverley LGA
- Problem Waste Recovery Program with drop-off points and events
- Partner with other organisations to explore and implement best practice waste processing services that will enable a pathway to circularity and net zero emissions by 2035
- Reduce emissions from waste through the electrification of Council's fleet
- Litter and illegal dumping and enforcement programs
- Explore opportunities to increase the market for recycled products and help drive circular outcomes through Council procurement

# Climate Action - Summary of Programs

GOALS	DIRECTIONS	ACTIONS	IMPLEMENTATION AND STAKEHOLDERS
<b>Continue to reduce GHG emissions to achieve net zero emissions for Council by 2030</b>	Implement the Zero Emissions and Efficiency Action Plan to drive down Council energy usage and costs	Purchase 100% renewable energy	Council, SSROC, private sector
		Remove gas appliances and minimise energy use on Council assets	Council, State and Commonwealth Government*
		Continue the transition of Council's passenger fleet to electric vehicles so that 50% are electric in 25-26.	Council and NSW Government*
		Electrify Council's light commercial electric fleet 2026-2028	Council and NSW Government*
		Electrify Council's medium and heavy vehicle fleet 2028-2030	Council and NSW Government*
		Measure and report on scope 1, 2, and 3 emissions and meeting Corporate Sustainability Leadership Program targets and KPIs	Council
		Explore opportunities to increase battery storage on Council assets to support the transition to Net Zero Community emissions	Council, Energy retailers*
<b>Support GHG reductions to achieve Net Zero emissions for community by 2035</b>	Enable sustainability and resilience upgrades in the built environment	Deliver Building Futures program to reduce energy and water use and increase solar in apartments in Waverley	Council, Strata communities
		Support the installation of solar and batteries on homes, businesses and community buildings	Council, community, NSW Government*, Commonwealth Government*, Net Zero Alliance
		Provide a public EV charging network to the local community to increase electric vehicles (EV) in Waverley.	Council, Regional Environment Program, NSW Government*, Private sector*
	Support and enable the Community to take local environmental action	Facilitate and educate the community to purchase 100% renewable electricity, electrify and access storage options	Council, Regional Environment Program, Net Zero Alliance
		Develop programs to ensure that all new buildings are all electric and that gas appliances can be progressively replaced in existing buildings.	Council, NSW Government*, Resilient Sydney
		Increase active transport through the implementation of Walking Strategy and Bike Strategy	Council, State Government*, SSROC*
<b>Ensure Waverley's assets and community are resilient to climate change impacts</b>	Improve resilience of assets and support our community to adapt to climate impacts	Progress the Coastal Management Program (CMP) to stage 3 to ensure the long-term resilience of our coast	Council, NSW Government*, Sydney Coastal Councils Group (SCCG)
		Engage community to build local preparedness to extreme events through the Waverley Resilience Framework and regional resilience actions	Council, Community, Resilient Sydney, NSW Government*
		Assess Climate Risks to Council Operations and assets, and the Community	Council, Community
		Address Climate Risks to council assets and the community	Council, Community, NSW Government*, Commonwealth Government*

\* Asterisk denotes a grant funding opportunity and/or requirement

# Nature Positive - Summary of Programs

GOALS	DIRECTIONS	ACTIONS	IMPLEMENTATION AND STAKEHOLDERS
<b>Protect and increase our biodiversity, parks, urban canopy cover and habitat areas</b>	Improve the condition of remnant and non-remnant native vegetation on public land and reinstate indigenous vegetation in Councils' parks and reserves	Continue to implement the restoration of Bronte Gully, Tamarama Gully and Thomas Hogan Reserve	Council
		Deliver the Biodiversity Action Plan- Remnant Sites to protect remnant vegetation and threatened species and plant communities.	Council
		Protect and conserve threatened species, Acacia terminalis subs eastern suburbs and Eastern Suburbs Banksia Scrub	Council, NSW Government, Centennial Parklands
		Deliver the bushcare volunteer program to engage the local community and improve local biodiversity.	Council, Community
		Continue to deliver the Woody meadows in steep slopes locations in Waverley to improve habitat.	Council, Researchers*
		Continue to implement Urban Greening and Cooling Strategy through street and park tree planting, compliance actions and public Domain projects, to meet Council Sustainability Leadership targets and KPIs	Council, State Government*, Community
<b>Support the community to address local environmental issues</b>	Increase community awareness and stewardship of natural environment	Deliver the Living Connections Program to improve habitat on private property Provide Citizen Science opportunities to monitor and evaluate the health of local ecosystems, including Marine and reduce threats	Council, Community, Local environment groups, Researchers*
	Deliver engaging environmental education programs & projects for community and staff	Deliver events, workshops, and education on environmental protection actions and measures Provide monthly Environmental news championing community action	Council, Regen Sydney
		Engage local volunteers and educators in sustainability resources, support and grant opportunities	Council, Community, State Government*
<b>Improve water efficiency and water quality</b>	Protect water quality and secure water supplies	Maintain and improve storm water quality improvement devices (SQID) in Waverley including Gross Pollutant Traps (GPTs) and raingardens.	Council, Sydney Water*
		Reduce potable water use by maintaining and expanding recycled water systems at Bondi, Tamarama, Bronte, Barracluff Park and Waverley Park.	Council

\* Asterisk denotes a grant funding opportunity and/or requirement



# Circular Economy - Summary of Programs

GOALS	DIRECTIONS	ACTIONS	IMPLEMENTATION AND STAKEHOLDERS
<b>Eliminate and divert waste through circular economies</b>	Implement the Draft Resource Recovery and Waste Strategy- Towards a Circular and Zero Waste Community 2025-2032	Implement the Strategy as outlined in the action table (Strategy still to be adopted)	Council, Community, NSW Government*
	Engage businesses in better waste and materials management.	Implement and evaluate the Bondi Junction Circular Economy Roadmap activities and report	Council, Community, Local businesses, NSW Government*
		Explore support for Commercial Organics and Food Organics services, supported by End Food Waste Australia	Council, Local businesses, Researchers*
	Develop and deliver community education and engagement projects to increase the recovery of materials and improve recycling opportunities and outcomes in Waverley	Deliver the Compost Revolution Program to facilitate composting and worm farming.	Council, Regional Environment Program
		Promote local problem waste services offered by local businesses to the community, and increase circularity opportunities in Council venues	Council, Community, Local businesses, NSW Government*
		Support the delivery of the Waverley Repair Café to build capacity of local skills and knowledge for repair, and reducing landfill	Council, Community, SSROC*
	Council continues to lead by example in best practice waste minimisation and management	Identify and report on Sustainability in Major Projects	Council
		Manage council procurement, assets, events sustainably + cost effectively	Council
		Report and reduce greenhouse emissions associated with waste management	Council, NSW Government*
	<b>Water pollution minimised</b>	Eliminate wastewater flows into our waterways	Progress the Diamond Bay Vacluse Refresh project to reduce untreated effluent reaching our coast.
			Council, Sydney Water

\* Asterisk denotes a grant funding opportunity and/or requirement



WAVERLEY  
COUNCIL

#### GET IN TOUCH

9083 8000

[info@waverley.nsw.gov.au](mailto:info@waverley.nsw.gov.au)

[waverley.nsw.gov.au](http://waverley.nsw.gov.au)

#### CUSTOMER SERVICE CENTRE

55 Spring St, Bondi Junction, NSW 2022