



HERITAGE CONSIDERATIONS

2. Heritage Listing (in study area)

Item – Landscape	Statement of Significance + History	Image
<p>11 Bell type letter receiver at corner of Nelson and Oxford Street</p> <p>(Waverly LEP 2012 - Item 223)</p>	<p>The basic design for bell letter receivers was produced by T.W. Levinge in 1855. This example was probably installed in the 1880s or 1890s.</p>	

4. Heritage Listings (adjacent to study area)

Item – Built Heritage	Statement of Significance + History	Image
<p>12 Single Storey row at 2-36 St James Row</p> <p>(Waverly LEP 2012 - Item 238)</p>	<p>The single storey attached residences at 2-36 St James Road are a notable and consistent grouping designed in the Federation Gothic and Federation Anglo Dutch Style integrating residences within a grouping reflecting the ongoing influence of the 19th Century Romantic movement. The building group has notable architectural qualities and strong streetscape value responding to the small scale and narrow subdivision pattern of the location. Capacity remains for reinstatement of original colour schemes, roof cladding and landscaping to these residences.</p>	

HERITAGE CONSIDERATIONS

3. Heritage Listings (adjacent to study area)

Image	Item – Built Heritage	Statement of Significance + History	Image
al integ- Road, unsym-	<p>no image 13 Attached/ semi-detached dwelling row at 1-41 Ruthven Street</p> <p>(Waverly LEP 2012 - Item 232)</p>	<p>Good Federation row. Retains streetscape interest despite loss of architectural integrity. Special architectural interest as a group together with Nos 2-36 St James Road, which appears to be the work of the same builder. Local significance. Altered unsympathetically.</p>	no image
itectural- Substan-	<p>no image 14 Two storey terrace row at 2-10 Ruthven Street</p> <p>(Waverly LEP 2012 - Item 231)</p>	<p>Essentially intact row of late nineteenth century terraces. Not outstanding architectural-ly but one of the least altered in the area. Valuable streetscape contribution. Substantially intact.</p>	no image

HERITAGE CONSIDERATIONS

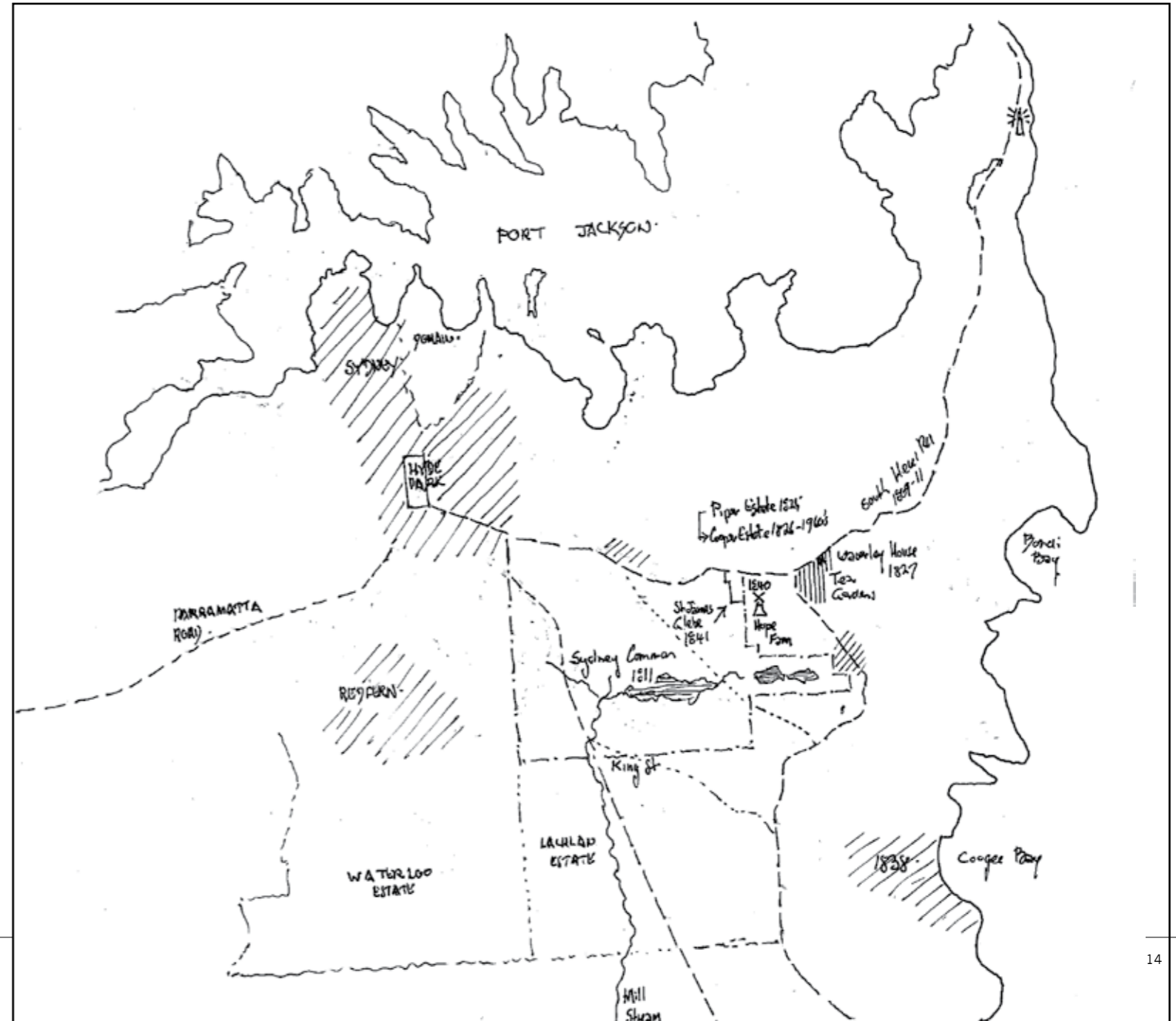
3. Heritage Listings (adjacent to study area)

Item – Built Heritage	Statement of Significance + History	Image
<p>15 Westgate Terrace at 12-42 Ruthven Street</p> <p>(Waverly LEP 2012 - Item 233)</p>	<p>Essentially intact row of late nineteenth century terraces. Not outstanding architectural-ly but one of the least altered in the area. Valuable streetscape contribution. Substan- tially intact.</p>	<p>no image</p>
<p>16 Cottage at 1 Mill Hill Road</p> <p>(Waverly LEP 2012 - Item 231)</p>	<p>Excellent example of a symmetrical, Federation cottage. Essentially intact and display- ing fine detailing.</p>	<p>no image</p>



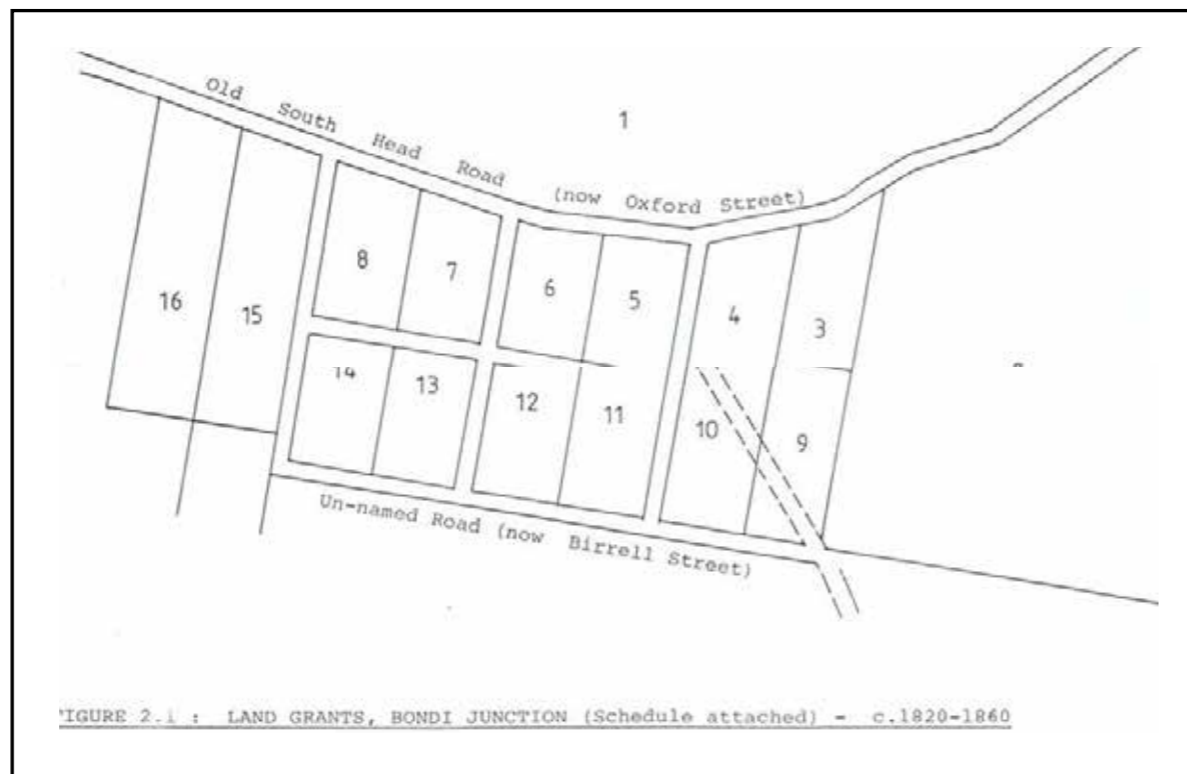
HERITAGE CONSIDERATIONS

4. Chronology of the Study Area

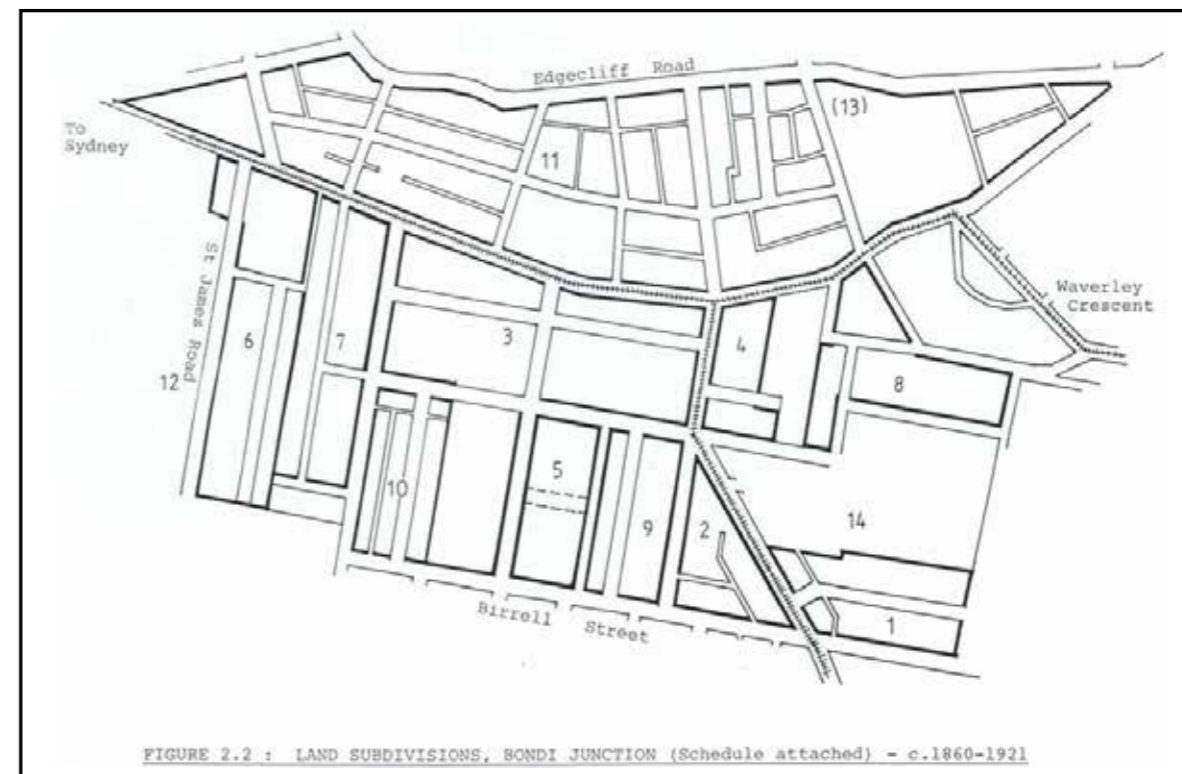


HERITAGE CONSIDERATIONS

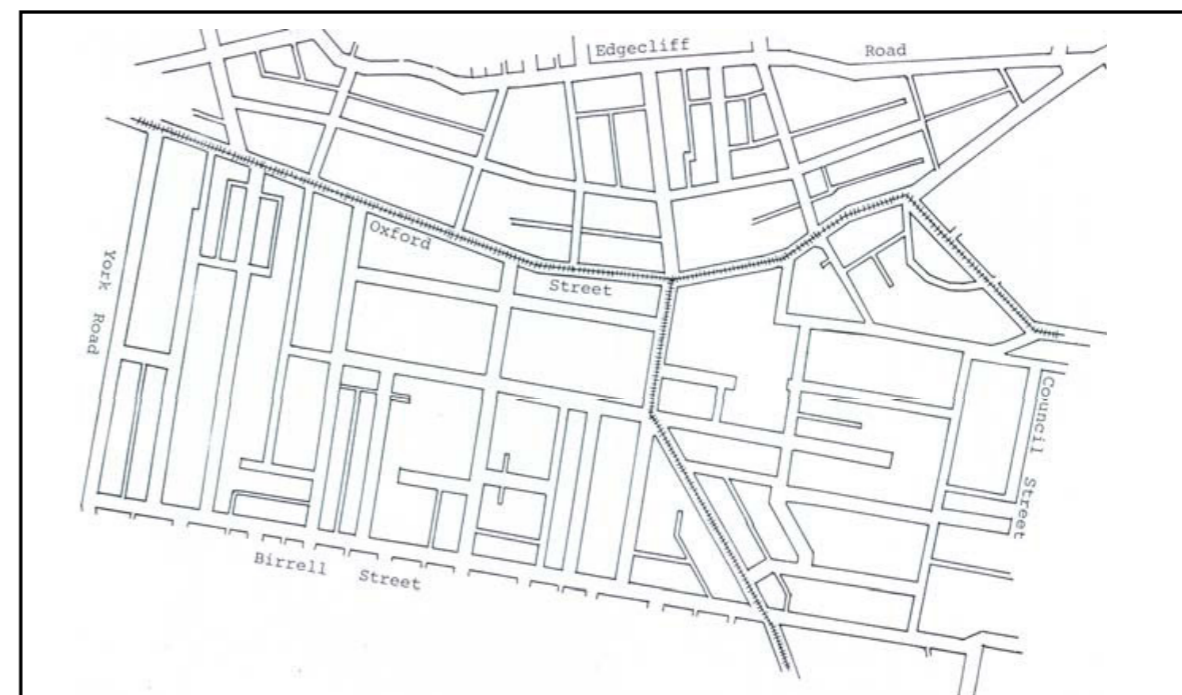
4. Chronology of the Study Area



Land Grants - 1820 - 1860



Land Subdivision 1860-1921



Street Pattern - 1925
Source : Wilson & Co., Wilsons Authentic Director



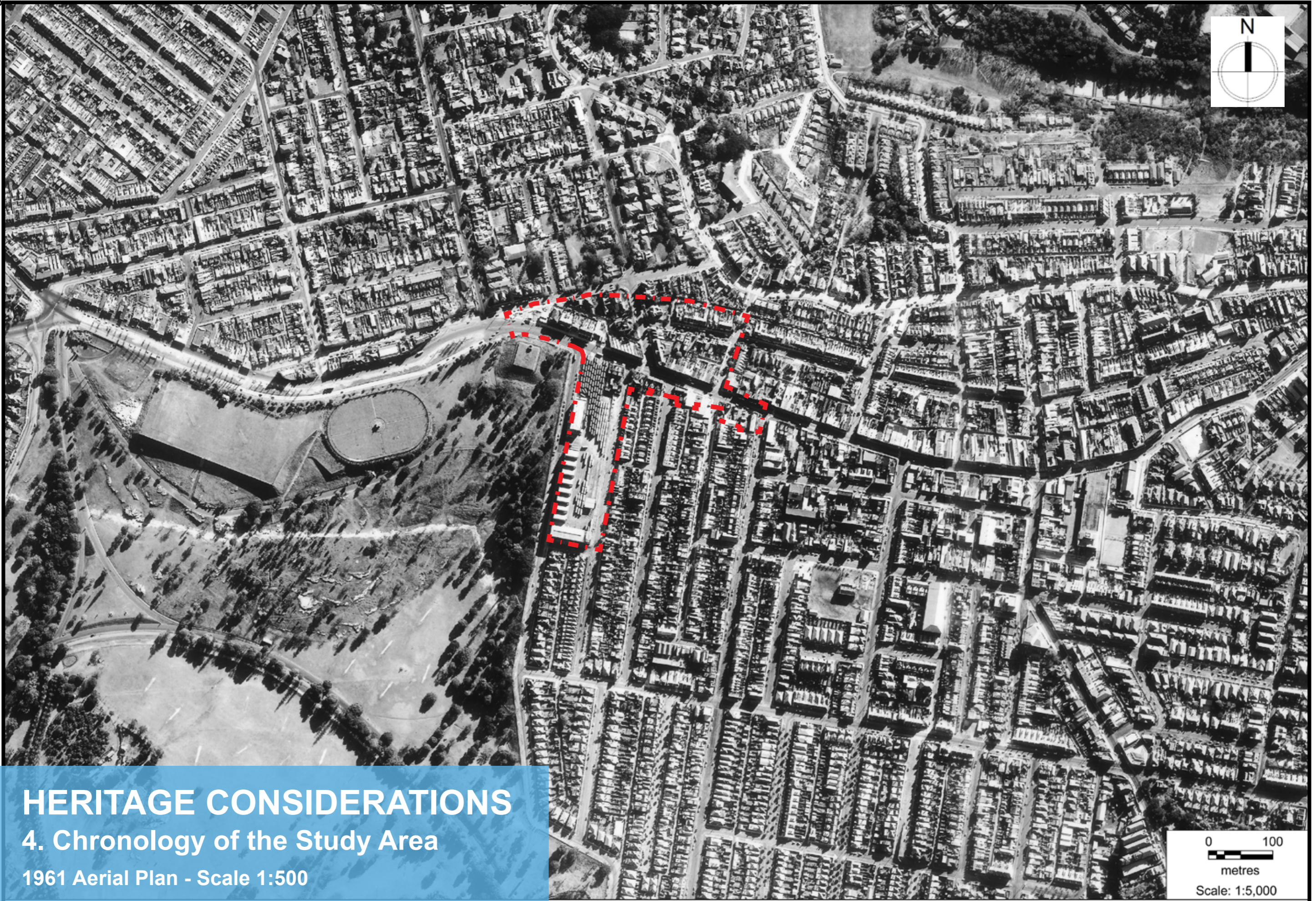
HERITAGE CONSIDERATIONS

4. Chronology of the Study Area

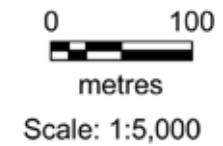
1943 Aerial Plan - Scale 1:500

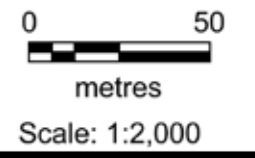
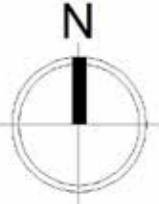


HERITAGE CONSIDERATIONS
4. Chronology of the Study Area
1943 Aerial Plan - Scale 1:2000

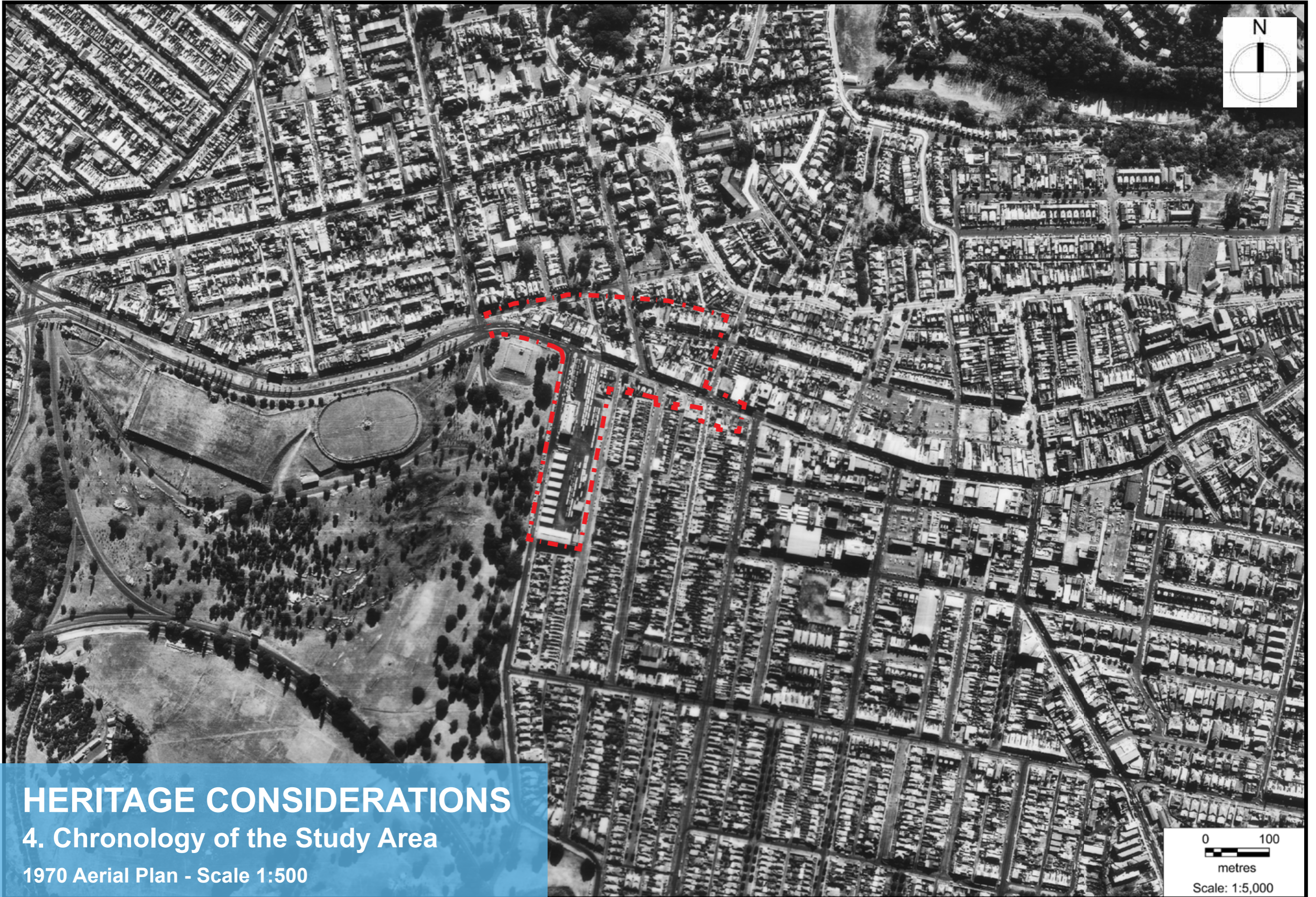


HERITAGE CONSIDERATIONS
4. Chronology of the Study Area
1961 Aerial Plan - Scale 1:500

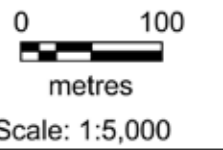




HERITAGE CONSIDERATIONS
4. Chronology of the Study Area
1961 Aerial Plan - Scale 1:2000



HERITAGE CONSIDERATIONS
4. Chronology of the Study Area
1970 Aerial Plan - Scale 1:500





HERITAGE CONSIDERATIONS
4. Chronology of the Study Area
 1970 Aerial Plan - Scale 1:2000



HERITAGE CONSIDERATIONS
4. Chronology of the Study Area
1982 Aerial Plan - Scale 1:500



HERITAGE CONSIDERATIONS

4. Chronology of the Study Area

1982 Aerial Plan - Scale 1:2000



HERITAGE CONSIDERATIONS

4. Chronology of the Study Area

1991 Aerial Plan - Scale 1:500



HERITAGE CONSIDERATIONS

4. Chronology of the Study Area

1991 Aerial Plan - Scale 1:2000

0 50
metres
Scale: 1:2,000



HERITAGE CONSIDERATIONS

4. Chronology of the Study Area

2002 Aerial Plan - Scale 1:500

74



HERITAGE CONSIDERATIONS

4. Chronology of the Study Area

2002 Aerial Plan - Scale 1:2000



HERITAGE CONSIDERATIONS
4. Chronology of the Study Area
2011 Aerial Plan - Scale 1:500



HERITAGE CONSIDERATIONS

4. Chronology of the Study Area

2011 Aerial Plan - Scale 1:2000



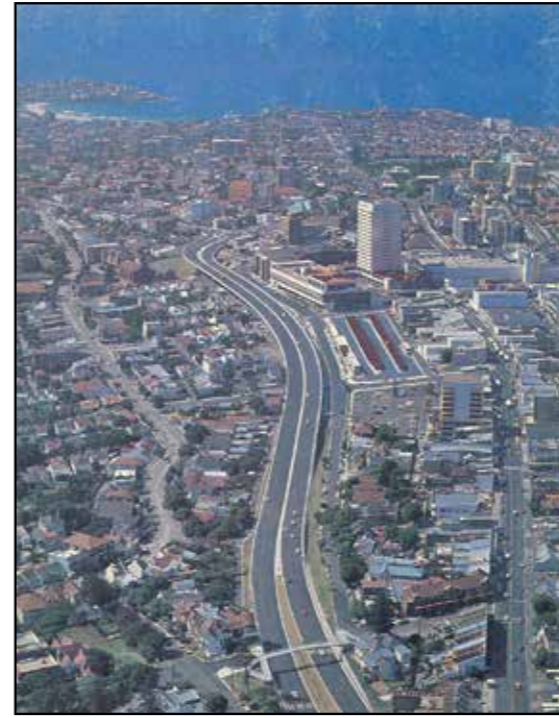
HERITAGE CONSIDERATIONS

5. Additional photographs - Syd Einfeld Drive

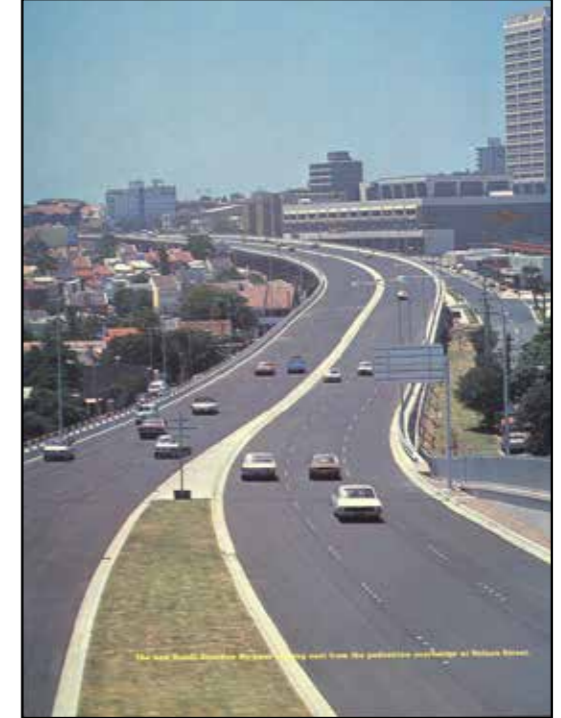
Please visit: <http://www.ozroads.com.au/NSW/Freeways/F7/easternfreeway.htm>



Aerial view of early construction work on the Bondi Junction bypass in 1977



Aerial view of the Bondi Junction bypass just after opening in January 1979



Looking east from the pedestrian bridge at Nelson St in 1979



The viaduct is nearing completion in late 1978



WEST OXFORD STREET
CHARACTER PRECINCT AREAS

CHARACTER PRECINCT AREAS

Precinct Map

Legend

- 1. Crux / Entry to Bondi Junction
- 2. Syd Einfeld Drive
- 3. Connecting to Woollahra
- 4. Oxford Street
- 5. Bus Depot
- 6. Heritage Interface
- 7. Centennial Parklands Interface
- Study Area



CHARACTER PRECINCT AREAS

1. Crux / Entry to Bondi Junction



CHARACTER PRECINCT AREAS

1. Crux / Entry to Bondi Junction



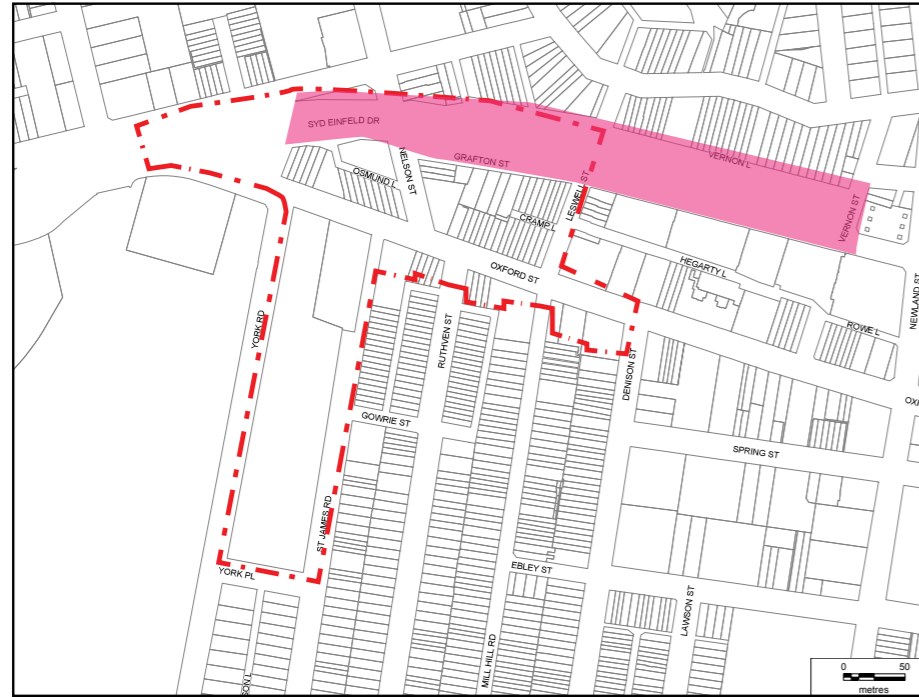
CHARACTER PRECINCT AREAS

1. Crux / Entry to Bondi Junction



CHARACTER PRECINCT AREAS

2. Syd Einfeld Drive



CHARACTER PRECINCT AREAS

2. Syd Einfeld Drive



CHARACTER PRECINCT AREAS

2. Syd Einfeld Drive



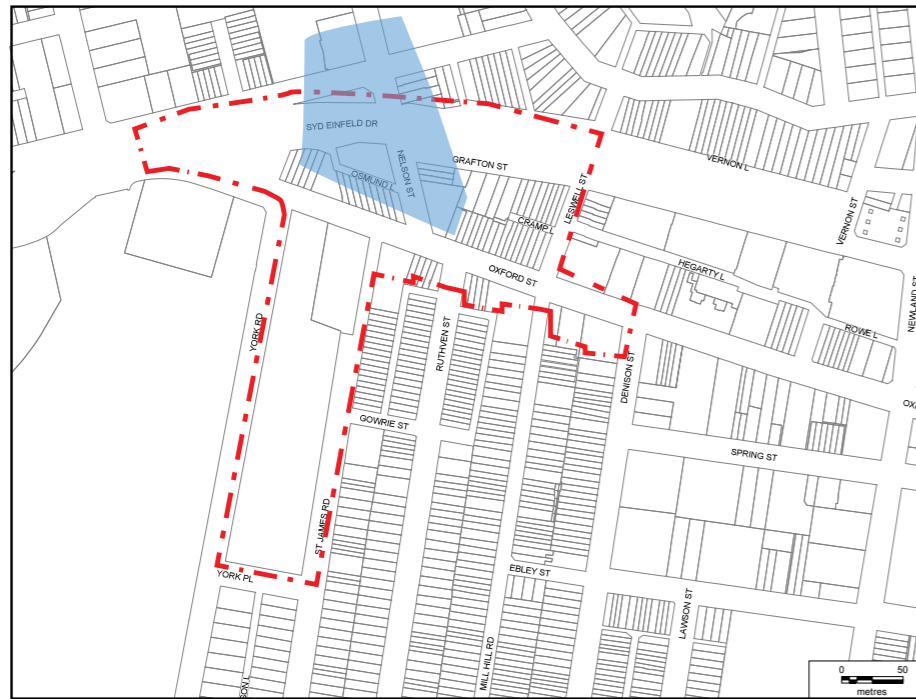
CHARACTER PRECINCT AREAS

2. Syd Einfeld Drive



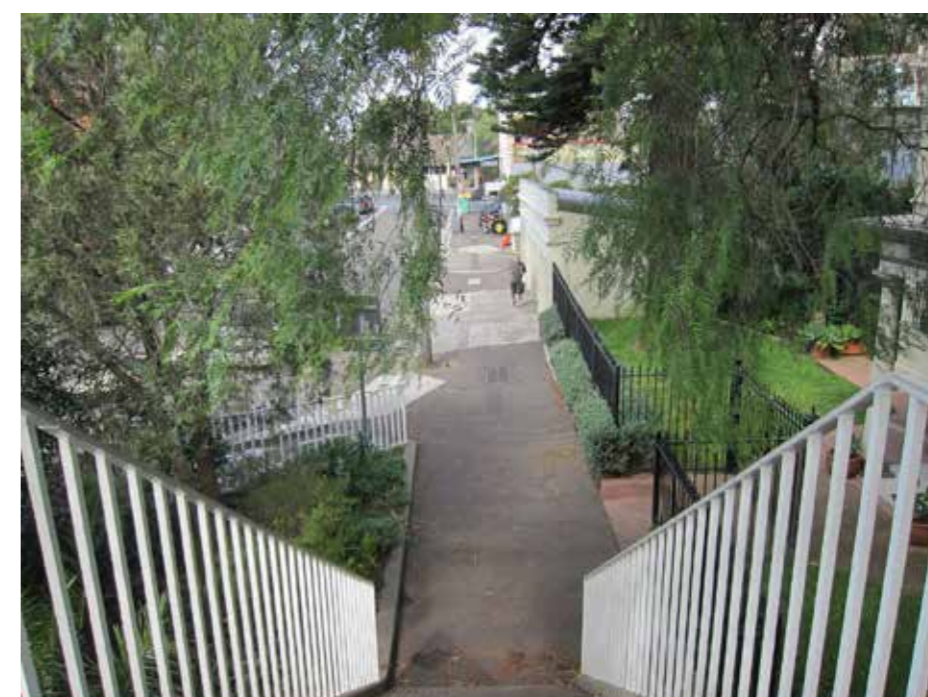
CHARACTER PRECINCT AREAS

3. Connecting to Woollahra



CHARACTER PRECINCT AREAS

3. Connecting to Woollahra



CHARACTER PRECINCT AREAS

3. Connecting to Woollahra



CHARACTER PRECINCT AREAS

3. Connecting to Woollahra / Nelson Street / Laneway Access



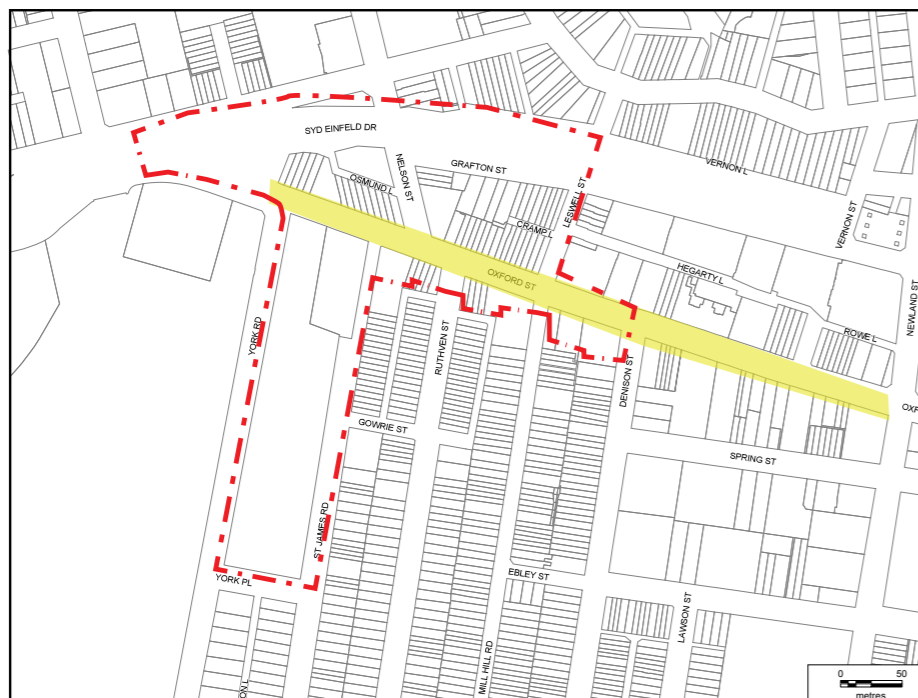
CHARACTER PRECINCT AREAS

3. Connecting to Woollahra / Nelson Street / Laneway Access



CHARACTER PRECINCT AREAS

4. Oxford Street



CHARACTER PRECINCT AREAS

4. Oxford Street



CHARACTER PRECINCT AREAS

4. Oxford Street



CHARACTER PRECINCT AREAS

4. Oxford Street



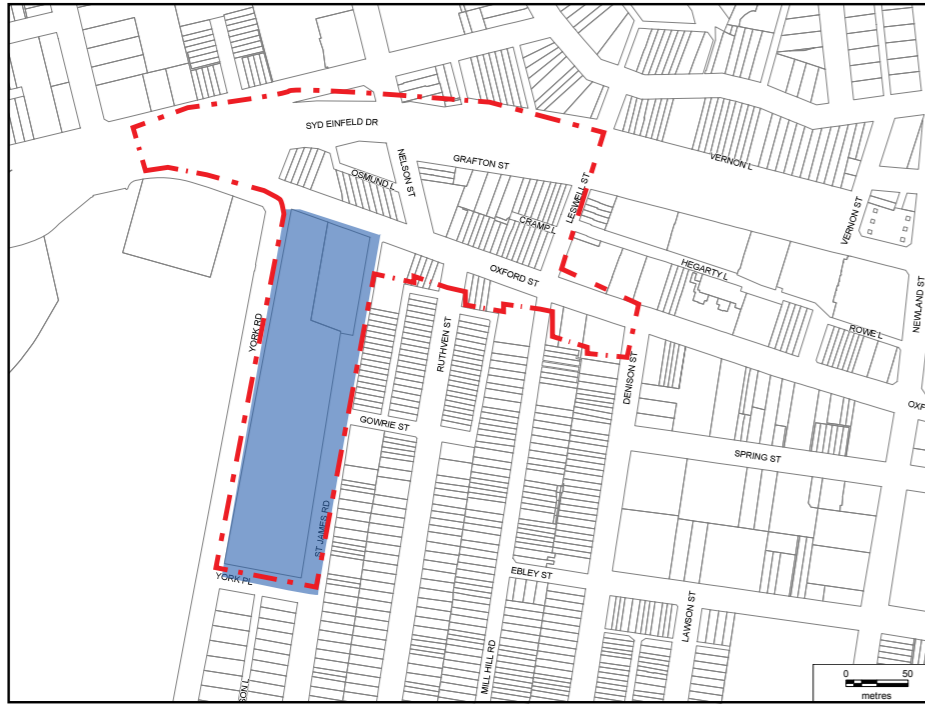
CHARACTER PRECINCT AREAS

4. Oxford Street



CHARACTER PRECINCT AREAS

5. Bus Depot



CHARACTER PRECINCT AREAS

5. Bus Depot



CHARACTER PRECINCT AREAS

5. Bus Depot



CHARACTER PRECINCT AREAS

5. Bus Depot



CHARACTER PRECINCT AREAS

5. Bus Depot



CHARACTER PRECINCT AREAS

6. Heritage Interface



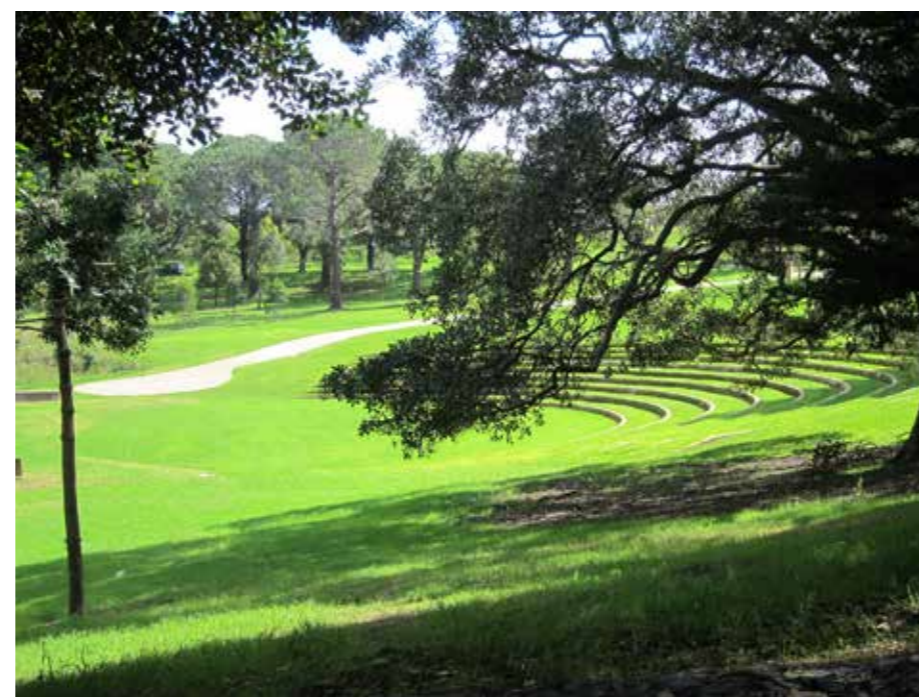
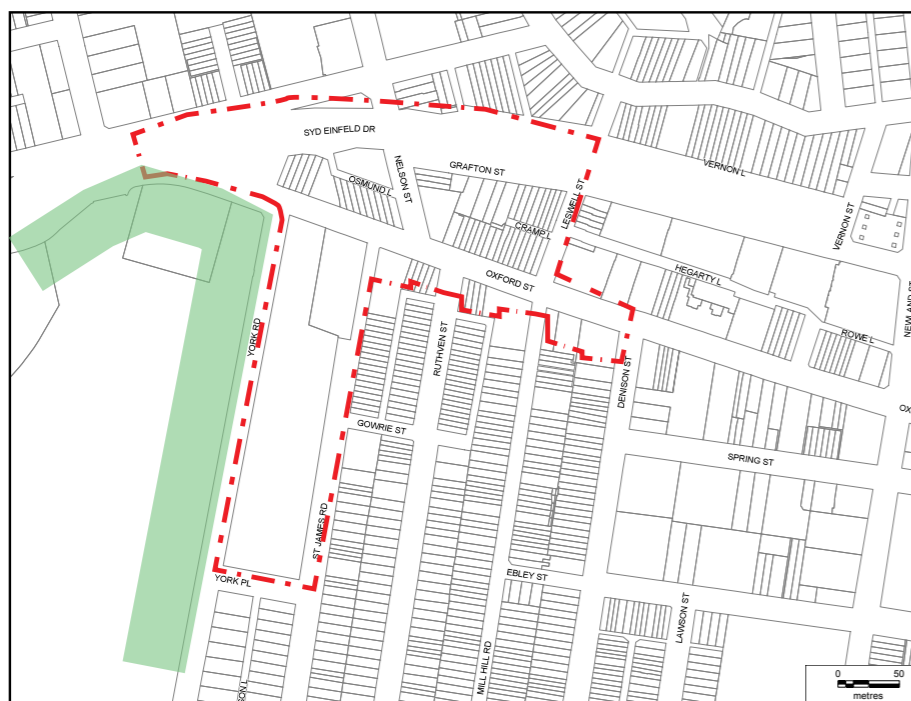
CHARACTER PRECINCT AREAS

6. Heritage Interface



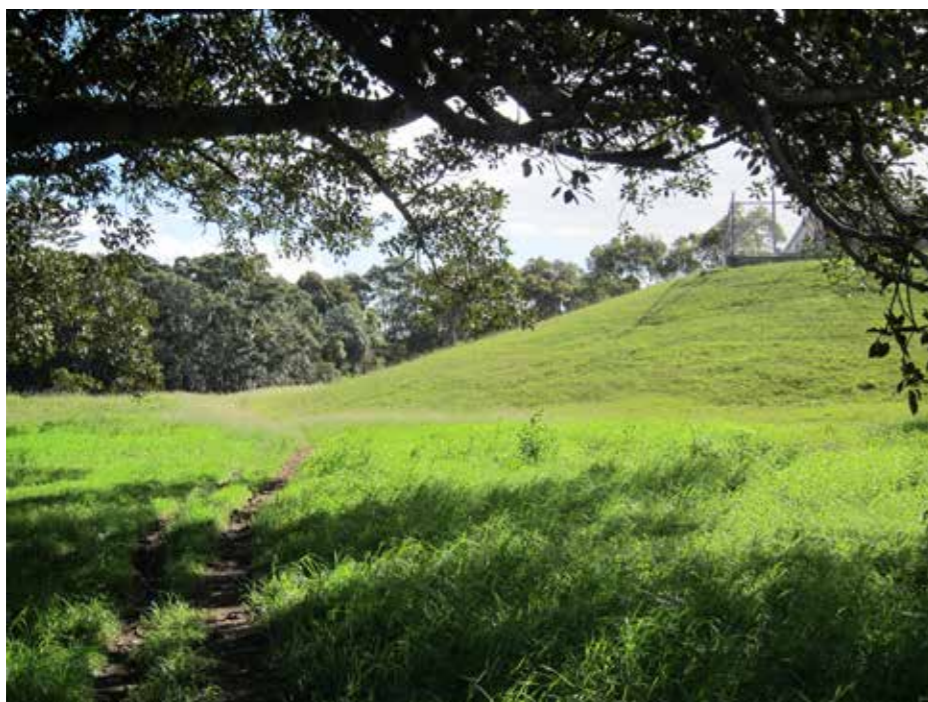
CHARACTER PRECINCT AREAS

7. Centennial Parklands Interface



CHARACTER PRECINCT AREAS

7. Centennial Parklands Interface



CHARACTER PRECINCT AREAS

7. Centennial Parklands Interface



CHARACTER PRECINCT AREAS

7. Centennial Parklands Interface

