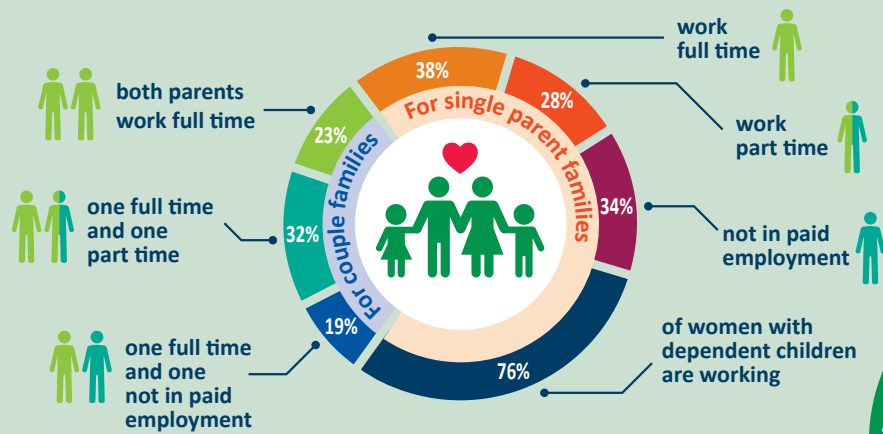
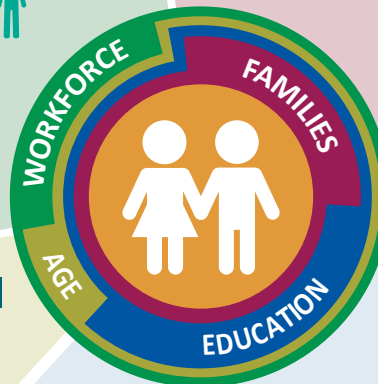


# Waverley's Children and Families Profile

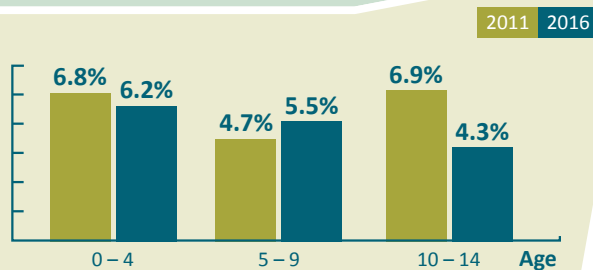
Waverley is a vibrant, active and creative community for children, young people and families to live and thrive. There were 10,700 children under 15, and around 5,000 families with young children in 2016.



**3225** people provided unpaid care for children other than their own. **39%** of these were over 65 years, which is likely to represent grandparents.



Compared to Greater Sydney, there is a similar proportion of preschool aged children but a lower proportion of older children.



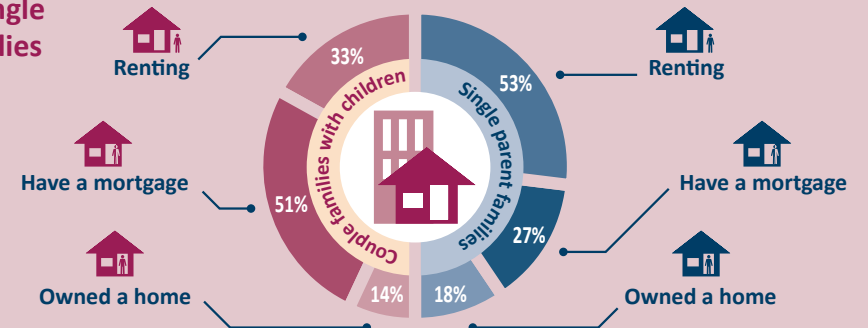
More families stayed in the area with primary school aged children.

Waverley Council has a strong and unique history in quality early education and care.

**24%** of households are couples with children

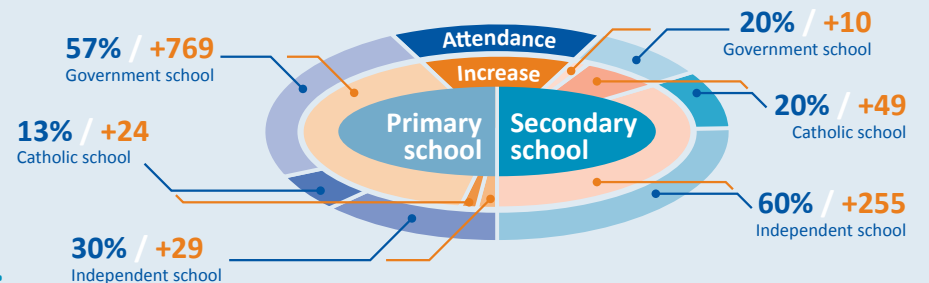
**6%** are single parent families

Compared to Sydney, less than half of families live in separate houses, whilst at least double live in medium and high density housing.



There are increasing demands on schools, with significant growth since 2011.

There is 1 Public High School and several Catholic and Independent schools.



## Waverley values and supports children, young people and their families through:

- Safe and inclusive playgrounds and parks
- Promoting literacy
- High quality early education and care (Early Education Centres, Family Day Care)
- Affordable, engaging school holiday programs
- Counselling and referral services
- Parenting information and skills development
- Grants and service development



WAVERLEY COUNCIL