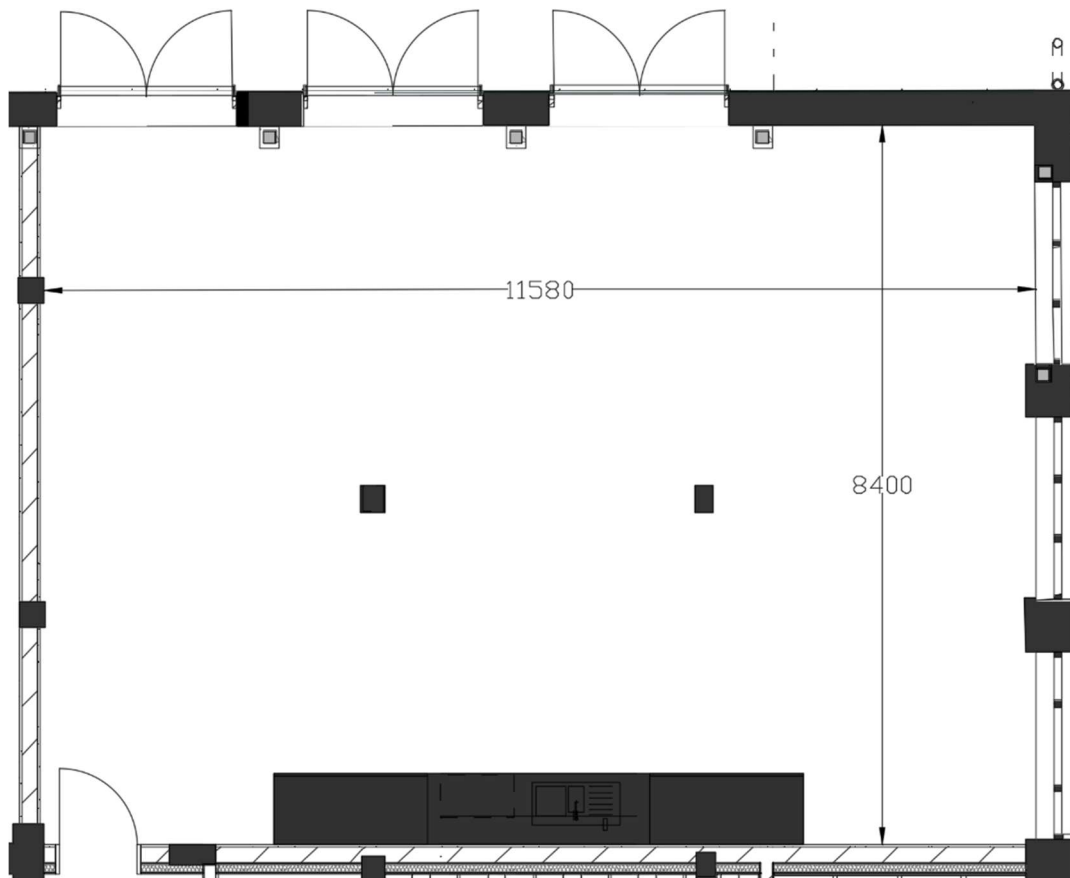


Bondi Pavilion

Technical Specifications

Yalagang Room



Architecture

The room has been refurbished as a multi-purpose space, including the addition of a sprung timber floor. Any fixings or alterations to the floor or walls is strictly prohibited. Any use of tape must be approved by Venue Management first.

Infrastructure in the room has been designed with the presumption that presentations would occur in one direction only. This includes a permanently mounted projector/projection screen as well as some short lighting bars and technical patching.

A picture hanging system is installed on the southern wall.

DRAFT CURRENT AS AT 6 JULY 2022

This information is based on construction documentation and subject to change.

Space

The Yalagang Room is approximately 11.5m long and 8.4m wide. The capacity for the space has been notionally set at 98 until proper sign-off.

Stage Lighting

The venue is not fitted with any theatrical or event lighting infrastructure. The room has been designed with gallery style track lighting. Standard room lighting is controlled through a local wall panel.

Audio

The room has been fitted out with an array of ceiling speakers for standard presentation and background music requirements.

Audio Control + Equipment

- Crestron System: controlled from local wall panels
- Single XLR patch for lectern
- Wireless Handheld Microphone

Temporary PA System

A temporary PA system has been designed for use across the venues to help support performance of live music or more complex audio set-ups. This is a shared resource across multiple rooms and its use must be confirmed by Venue Management.

- 2 x Martin CCD Live 12"
 - 2 x Martin SXP 118
 - 4 x Martin LE100
 - 1 x QSC QA PLD 4.5
-
- 1 x Allen & Heath GX4816 (5RU)
 - 2 x 2RU lockable rack mounting drawers. (4RU)
 - 1 x QSC QA PLD 4.5 quad channel amplifier (2RU)
 - 1 x Jands PDS1211 3 phase power distribution (2RU)

- 1x Allen + Heath SQ5 (with Dante expansion card)
 - 1 x 40m FOH Multicore. Eurocable Multisignal with two CAT6A, two AES individually Jacketed shielded digital audio pairs and one 3.30mm² (12AWG) double shielded power cable
 - 2 x 10m Eurocable Cat5e patch cables with Neutrik connectors
 - 2 x 7.5 meter Eurocable Cat5e patch cables with Neutrik connectors
-
- ENCORE Standard cable packer ES RC-ms16
 - 4 x 15m 8 channel female XLR plate with male sub trunk
 - 10 x 1m XLR mic cable
 - 15 x 5m XLR mic cables
 - 10 x 7.5m XLR cables
 - 10 x 10m XLR mic cables
 - 6 x 10m high quality 4 way stage power drops
-
- 1 x 25m 32 amp 3 phase cable with Wilco connection by Clipsal
 - 5 x 5m 240V 10 amp extension cables
-
- 1 x Sennheiser e602 -II Outer Kick drum mic
 - 1 x Sennheiser e901 Inner kick drum mic
 - 4 x Sennheiser e614 Pencil condenser mics
 - 4 x Sennheiser e604 Clip on tom mics
 - 2 x Sennheiser e609 Guitar cabinet mics
 - 4 x Shure Sm57 all purpose dynamic mics
 - 6 x Shure Beta 58 dynamic vocal mics
 - 4 x Klark Technic DI10A mono DI boxes
 - 2 x Klark Technic DI20R stereo DI boxes

Vision

The room has permanently installed vision infrastructure. The system is also controlled through Crestron and consists of a drop down projector screen, projector that is patched into via HDMI.