



E.

Furniture And Fixtures

E.01

Barbeque

Function

- Typically use is limited to picnic areas in Regional and District parks only.
- Locate barbeques close to shelters or picnic settings so that the barbeque can be equally shared.
- Wherever possible, locate barbeques off accessible paths and in shaded areas.
- Barbecues should be located where they can be easily surveilled to reduce the risk of vandalism.

Supplier

- Contractor to nominate based on below specifications.

Materials and Dimensions

- 2 x Electric Stainless Steel cooktops.
- Safety Push Button Start Timing Control.
- 2 x Baffled Fat Collection Trays.
- Fascia Panels - CFC with #4 Brushed Stainless Steel.
- Frame - Aluminium powdercoated with Dulux N43 'Pipeline Grey'.
- No signage / branding (manufacturer or Council) to be on furniture.

Installation

- Install as per manufacturers recommendations.
- Surface mount on concrete slab.
- NOTE: Ensure Power source and switch board/meter capacity are available. If not, ensure appropriate measures are undertaken to provide a source of power to operate the BBQ, which will involve seeking approval for power connection and switch board from service provider.

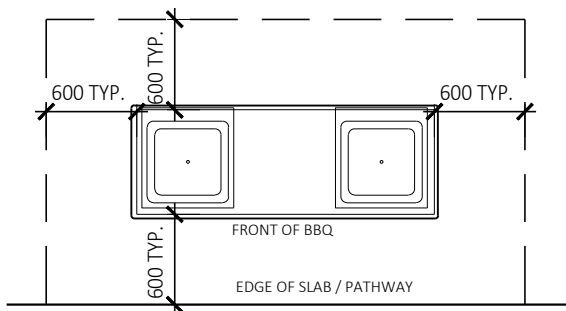
Maintenance

- Powdercoated. External surfaces, including the underside and sheltered areas, should be washed down regularly, especially in corrosive conditions (eg. salt or chemical deposits). Surfaces that have become dull through prolonged exposure to sunlight can usually be revived by polishing. Automotive polish (non-cutting) can be used to restore a surface that has become scratched or abraded.
- Stainless steel. Clean as needed using a soft cloth or brush with a mild detergent. Avoid steam cleaning, abrasive cleansers, carbon steel brushes/wools and cleaners containing chlorine. Stainless steel cleaners may be used on stainless furniture to remove stubborn stains. Refer to manufacturers website for more information.



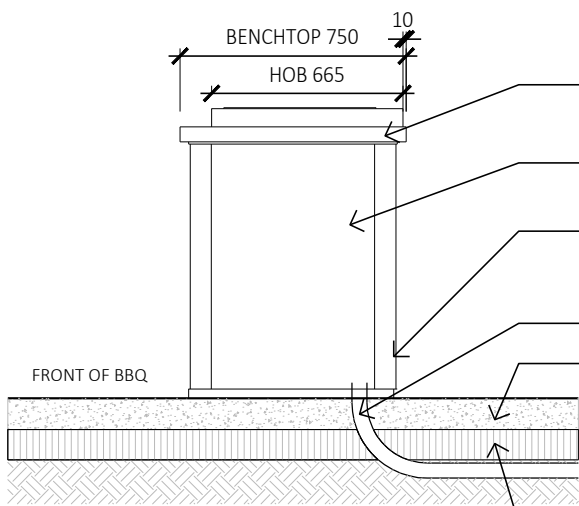
Barbeque - Tamarama beachfront

Furniture And Fixtures Barbeque



D01 BARBEQUE SETOUT PLAN
Scale 1:50

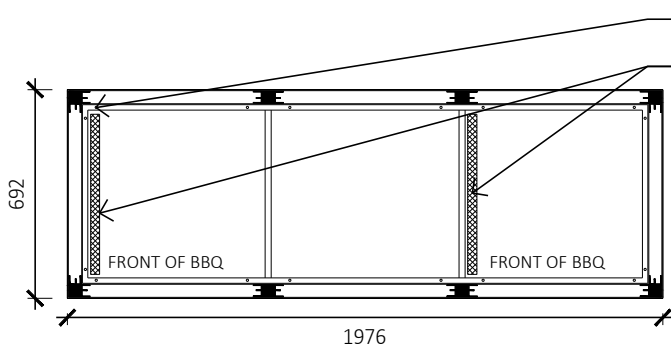
NOTE:
 - NOMINAL EXTENT OF PAVING / AREA TO BE KEPT CLEAR OF OBSTACLES
 - PROVIDE ADEQUATE CIRCULATION ALL ROUND
 - CONCRETE SLAB TO BE EXTENDED TYPICALLY 600MM FROM EDGES



D02 BARBEQUE SIDE ELEVATION
Scale 1:25

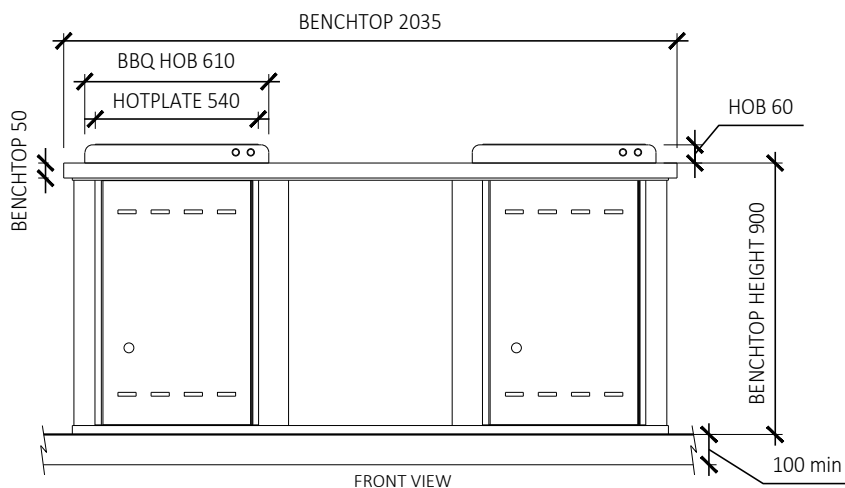
ALUMINIUM FRAME WITH POWDERCOAT FINISH 'PIPELINE GREY'
 CFC FASCIA PANELS WITH #4 BRUSHED STAINLESS STEEL MARINE GRADE 316
 FIX TO SLAB AS PER MANUFACTURERS RECOMMENDATIONS, USING STAINLESS STEEL MARINE GRADE 316 FITTINGS
 CONDUIT
 100MM THICK LOCALISED CONCRETE SLAB. AFTER MACHINE FLOATING & STEEL TROWELLING, PROVIDE A SPONGE FINISH TO THE EXPOSED SURFACES

100MM DEPTH DGB20 COMPACTED TO NO LESS THAN 95% M.D.D.



D03 BARBEQUE BASE DETAIL
Scale 1:25

BRING UNDERGROUND SUPPLY PIPES/CABLES UP TO THE LEFT SIDE OF HOTPLATE OPENING LOOKING FROM THE FRONT AS INDICATED BY SHADED AREAS. DO NOT BRING PIPES/CABLES UP DIRECTLY UNDERNEATH HOTPLATE AND ENSURE PIPES/CABLES DO NOT RUN UNDERNEATH HOTPLATE.



D04 BARBEQUE FRONT DETAIL
Scale 1:25

E.02

Street Seat

Function / Location

- Seats are to be installed in streets, plazas and malls (for Park Seats, refer to the 'Park Seat' section following).
- The seating is selected with central armrests to assist mobility impaired.
- Surface Mounted to be installed on concrete.
- Sub-surface Mounted to be installed on segmental pavers and decomposed granite paving.

Supplier

- Tom Stoddart Pty Ltd (Town and Park)¹
Ph: 1300 782 101

Product

- Town and Park 'City Seat'
- **Street Seat Type A:** Surface Mount
 - SPTP.SSE.T5.SP.400.2000.PC
- **Street Seat Type B:** Sub-surface Mount
 - SPTP.SSE.T5.SS.400.2000.PC

Material Specification

- Marine grade aluminium frame and post leg powdercoated with Dulux N43 'Pipeline Grey'.
- Australian hardwood timber slats complying with one or all of the following:
 - Australian Forest Certification Scheme (AFS);
 - Forest Stewardship Council (FSC), or
 - Program for the Endorsement of Forest Certification (PEFC).
- Minimum 2 armrests as per manufacturers recommendations.
- Slats 2,000mm length.
- Use Stainless Steel 316 Marine grade bolts and fixings.
- Timber must be seasoned to prevent leaching of tannins.
- Coat with a commercial grade outdoor furniture oil which will not change the colour of the timber, and which is UV stable. Product equivalent to Dulux – Intergrain Nature's Timber Oil. Apply as per manufacturers recommendation.
- No signage / branding (manufacturer or Council) to be on furniture

Installation

- Install as per manufacturers recommendations.
- Street Seat Type A: Surface mounted seats shall be installed on flat concrete surfaces with a slope less than 2%.



Street Seat Type A - Surface mount Bondi Junction

- Street Seat Type B (sub-surface) shall be used on segmented paving and decomposed granite paving, in areas with a slope greater than 2%, ensuring they are installed plumb. All fixing bolts are to be stainless steel 316 Marine grade.
- Ensure the concrete slab matches the adjacent surrounds in colour and finish.
- Set seats back from path of travel.
- In areas that have pavers, install Street Seat Type B onto a sub-surface concrete footing. Ensure pavers are cut and installed to conceal fixings.
- Seats are to be installed level and square to adjacent elements, such as kerbs, buildings, walls, and concrete footpaths, with a height between the ranges of 425mm and 435mm, unless otherwise specified.
- Face seats towards dominant view or pedestrian thoroughfare, unless otherwise directed by Council representative.

Maintenance

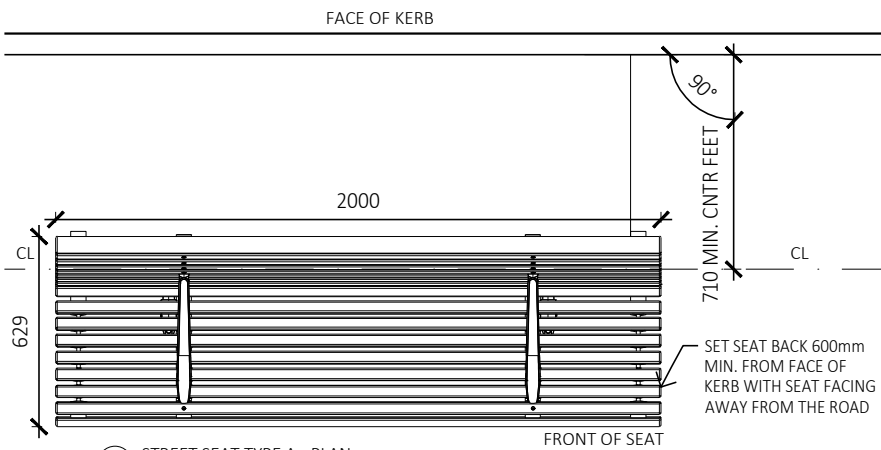
- Pressure wash
- Pre-treatment: Apply Intergrain Reviva or similar approved water based
- Finisher : Coat with product equivalent to Dulux – Intergrain Nature's Timber Oil. Apply as per manufacturers recommendation.
- First Onsite Application: 3-6 months after the installation.
- Second Onsite Application: 6-9 months after first onsite application.
- Ongoing Maintenance: Every 12 months.
- Graffiti removal as required.

Spare Parts

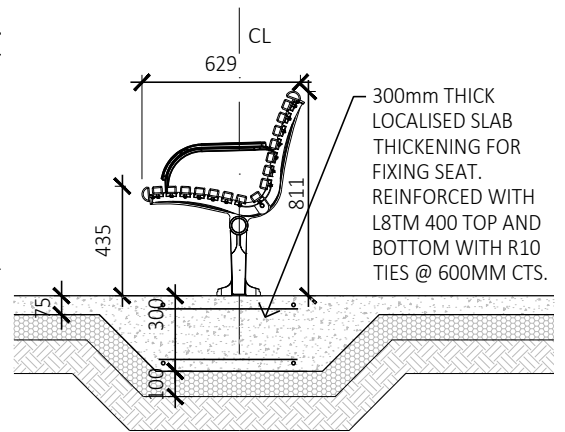
- Arm Rest - SPTP.AR.CITY
- Skate Stop - SPTP.EG.CITY

¹ Waverley Council, 2018, CM/7.20/18.11 Minutes of the Waverley Council Meeting Tuesday 20 November 2018, Waverley Council

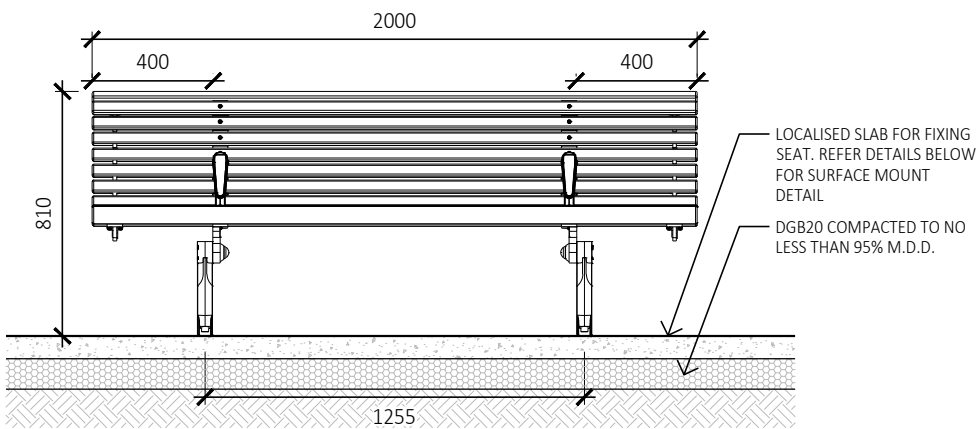
Furniture And Fixtures **Street Seat**



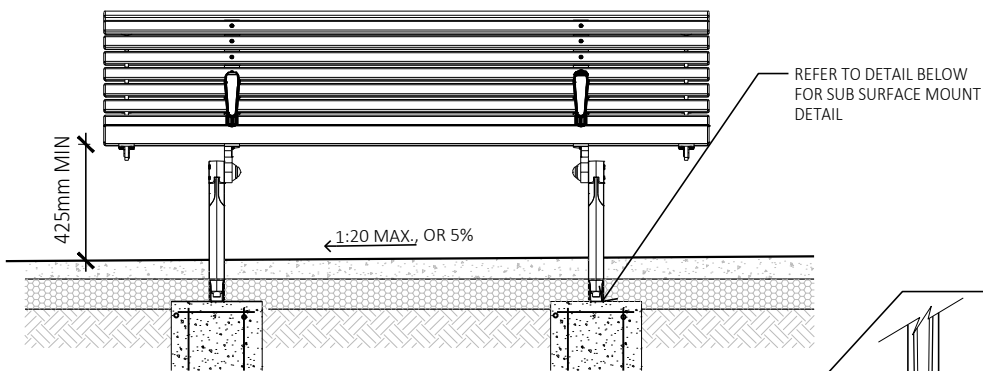
D01 STREET SEAT TYPE A - PLAN
Scale 1:25



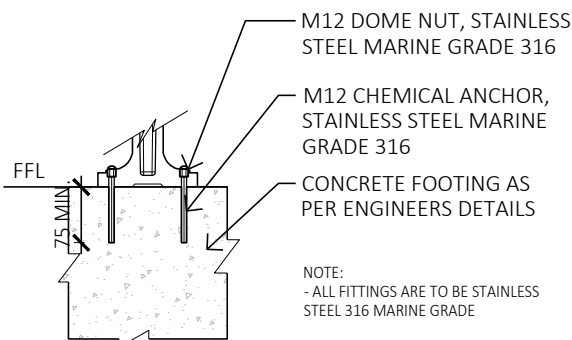
D02 STREET SEAT TYPE A - SIDE ELEVATION
Scale 1:30



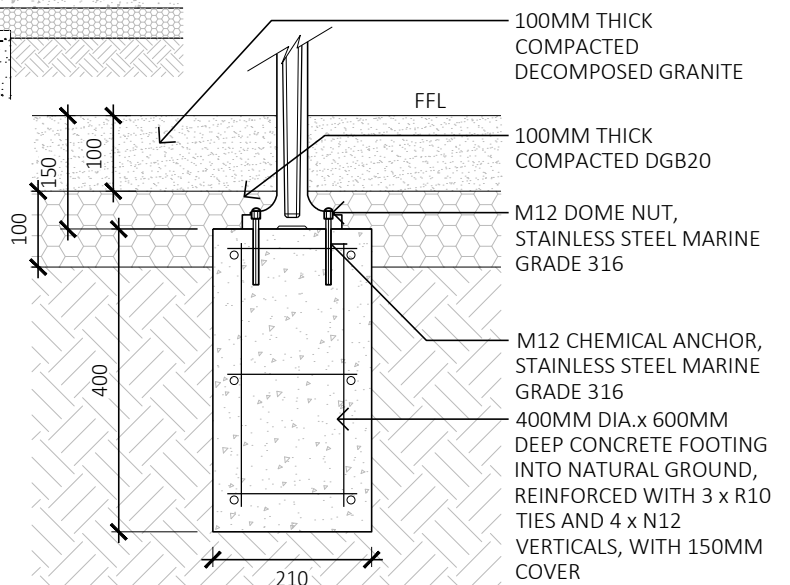
D03 STREET SEAT TYPE A - SURFACE MOUNT ELEVATION
Scale 1:25



D04 STREET SEAT TYPE B - SUB-SURFACE MOUNT ELEVATION
Scale 1:25



D05 STREET SEAT TYPE A SURFACE MOUNT
Scale 1:10



D06 STREET SEAT TYPE B SUB-SURFACE MOUNT
Scale 1:10

E.03

Park Seat

Function

- The Park Seat is to be used for all parks, reserves and open spaces only.
- The Park Seat shall be positioned in areas aimed at providing people an opportunity to rest and take advantage of prominent views; or as support facilities to areas such as picnic areas and playgrounds.

Supplier

- Tom Stoddart Pty Ltd (Town and Park)¹
1300 782 101

Product

- **Park Seat Type A:** Surface Mount
 - SPTP.SSD2.T5.SP.AR2.EG2.2000
- **Park Seat Type B:** Sub-surface Mount.
 - SPTP.SSD2.T5.SS.AR2.EG2.2000

Material Specification

- Marine grade aluminium frame and post leg.
- Australian hardwood timber slats complying with one or all of the following:
 - Australian Forest Certification Scheme (AFS);
 - Forest Stewardship Council (FSC), or
 - Program for the Endorsement of Forest Certification (PEFC).
- Minimum 2 armrests, positioned one on each end.
- Slats 2,000mm length.
- Use Stainless Steel 316 Marine grade bolts and fixings.
- Timber must be seasoned to prevent leaching of tannins.
- Coat with a commercial grade outdoor furniture oil which will not change the colour of the timber, and which is UV stable. Product equivalent to Dulux – Intergrain Nature's Timber Oil. Apply as per manufacturers recommendation.
- No signage / branding (manufacturer or Council) to be on furniture.

Installation

- Install as per manufacturers recommendations.
- Park Seat Type A: Surface mounted seats shall be installed on flat concrete surfaces only.
- Park Seat Type B: Sub-surface mounted seats shall be installed on segmented pavements and concrete surfaces with a gradient greater than 1:50, or 2%, as well as wetpour rubber and decomposed granite surfaces.
- Ensure the concrete slab matches the adjacent surrounds in colour and finish.



Park Seat Type A - Surface mount (Fingleton Reserve)

- Set seats back from path of travel, and ensure seat faces towards dominant view.
- Seats are to be installed level and square to adjacent elements, such as kerbs, buildings, walls, and concrete footpaths, with a height between the ranges of 425mm and 435mm, unless otherwise specified

Maintenance

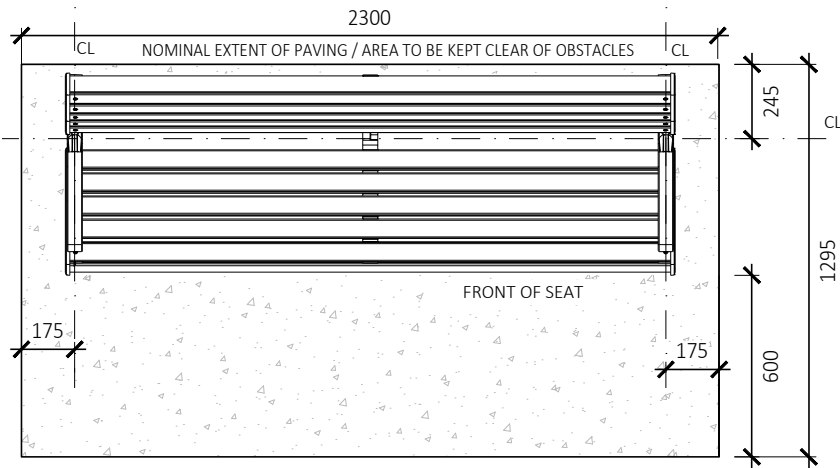
- Pressure wash
- Pre-treatment: Apply Intergrain Reviva or similar approved water based
- Finisher : Coat with product equivalent to Dulux – Intergrain Nature's Timber Oil. Apply as per manufacturers recommendation.
- First Onsite Application: 3-6 months after the installation.
- Second Onsite Application: 6-9 months after first onsite application.
- Ongoing Maintenance: Every 12 months.
- Graffiti removal as required.

Spare Parts

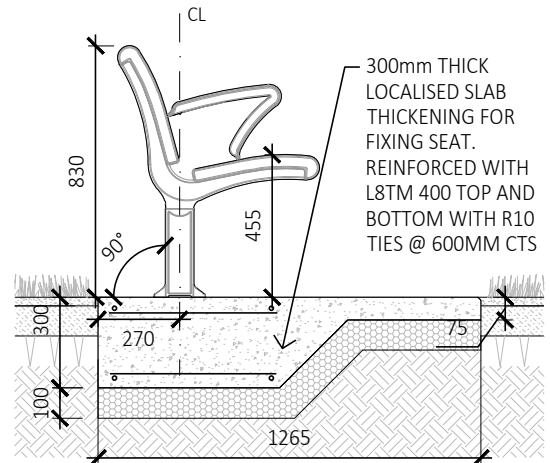
- Arm Rest - SPTP.AR.METRO
- Skate Stop - SPTP.EG.METRO

¹ Waverley Council, 2018, CM/7.20/18.11 Minutes of the Waverley Council Meeting Tuesday 20 November 2018, Waverley Council

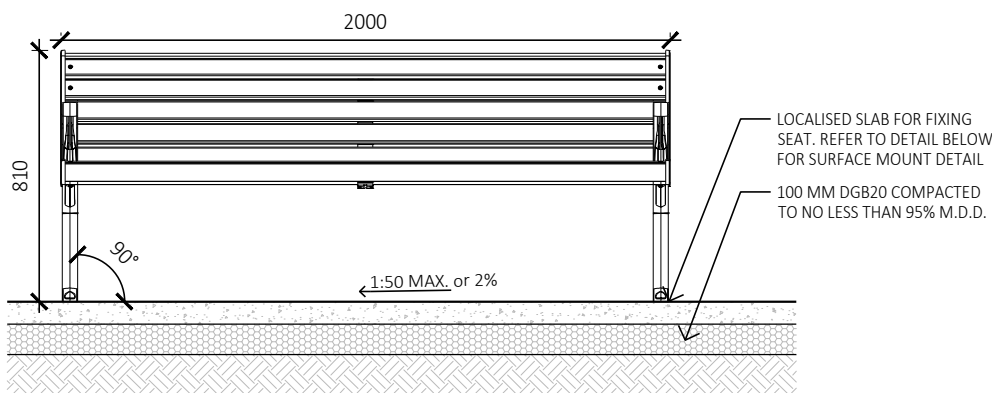
Furniture And Fixtures Park Seat



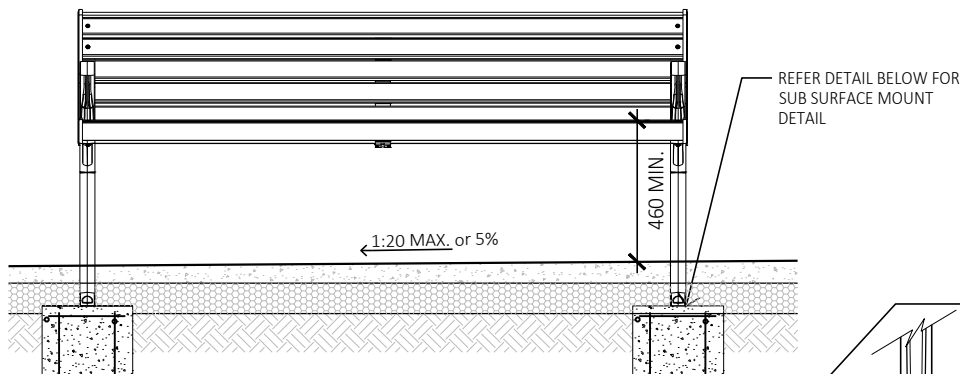
D01 PARK SEAT PLAN
Scale 1:25



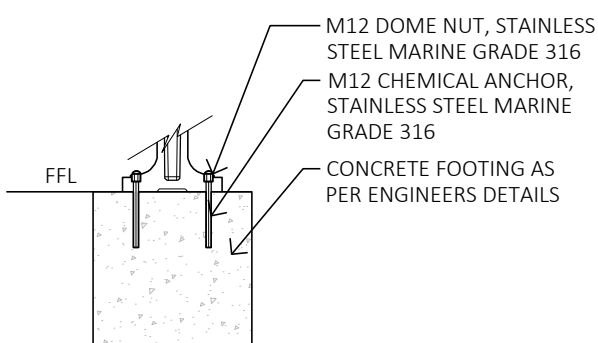
D02 PARK SEAT TYPE A - SIDE ELEVATION
Scale 1:25



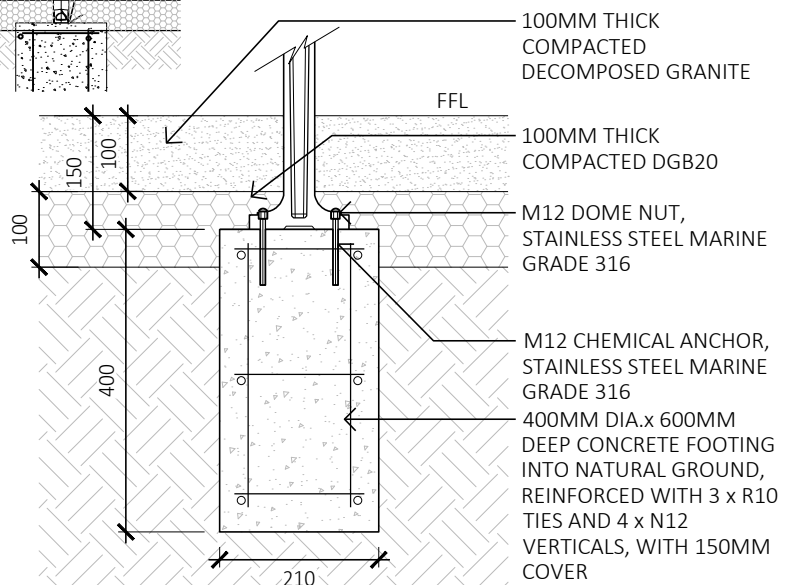
D03 PARK SEAT TYPE A - SURFACE MOUNT ELEVATION
Scale 1:25



D04 PARK SEAT TYPE B - SUB-SURFACE MOUNT ELEVATION
Scale 1:25



D05 DETAIL 05 - TYPE A SURFACE MOUNT
Scale 1:10



D06 DETAIL 06 - TYPE B SUB-SURFACE MOUNT
Scale 1:10

E.04

Park Bench

Function

- The Park Bench shall be positioned in areas aimed at providing people an opportunity to rest for short periods of time, such as along walkways.
- It can also be used to view in both directions and would be suitable in areas of tourist activity, such as elevated lookouts.
- The wide Park Bench (670mm wide) is suitable for use where carers and small children frequent as it can be used as a change table.

Supplier

- Tom Stoddart Pty Ltd (Town and Park)¹
1300 782 101

Product

- **Park Bench Type A1:** Surface Mount.
 - SPTP.BTD.T5.SP.2000
- **Park Bench Type B1:** Sub-surface Mount.
 - SPTP.BTD.T5.SS.2000
- **Park Bench Wide Type A2:** Surface Mount.
- **Park Bench Wide Type B2:** Sub-surface Mount.

Material Specification

- Marine grade aluminium frame and post leg.
- Australian hardwood timber slats complying with one or all of the following:
 - Australian Forest Certification Scheme (AFS);
 - Forest Stewardship Council (FSC), or
 - Program for the Endorsement of Forest Certification (PEFC).
- Slats 2,000mm length.
- All bolts and fixings to be 316 Marine Grade Stainless Steel.
- Timber must be seasoned to prevent leaching of tannins.
- Coat with a commercial grade outdoor furniture oil which will not change the colour of the timber, and which is UV stable. Product equivalent to Dulux – Intergrain Nature's Timber Oil. Apply as per manufacturers recommendation.
- No signage / branding (manufacturer or Council) to be on furniture.

Installation

- Install as per manufacturers recommendations.
- Park Bench Type A: Surface mounted seats shall be installed on flat concrete surfaces only.
- Park Bench Type B: Sub-surface mounted seats shall be installed on segmented pavements, decomposed



Park Bench Type B1 - Sub-surface mount

granite and concrete surfaces with a gradient greater than 1:50 or 2%.

- Ensure the concrete slab matches the adjacent surrounds in colour and finish.
- Set seats back from path of travel.
- Ensure a distance of 600mm is maintained to the front and back of the bench as a clear-zone in order to provide access.
- Seats are to be installed level and square to edge of concrete pad or adjoining elements such as buildings, walls and kerbs.

Maintenance

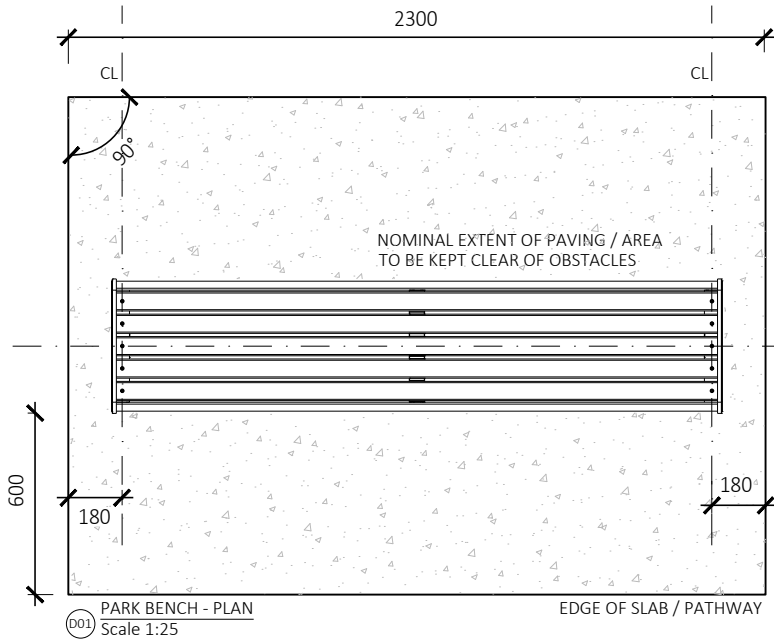
- Pressure wash
- Pre-treatment: Apply Intergrain Reviva or similar approved water based
- Finisher : Coat with product equivalent to Dulux – Intergrain Nature's Timber Oil. Apply as per manufacturers recommendation.
- First Onsite Application: 3-6 months after the installation.
- Second Onsite Application: 6-9 months after first onsite application.
- Ongoing Maintenance: Every 12 months.
- Grafitti removal as required.

Spare Parts

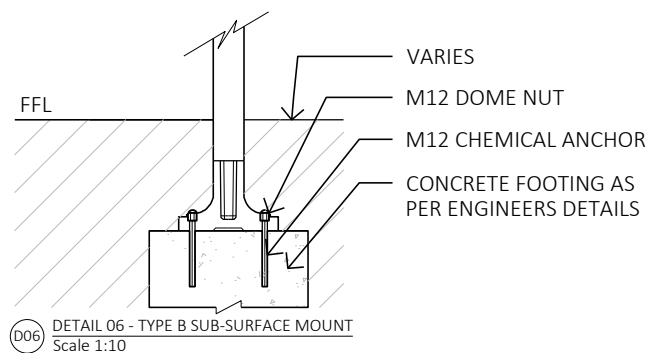
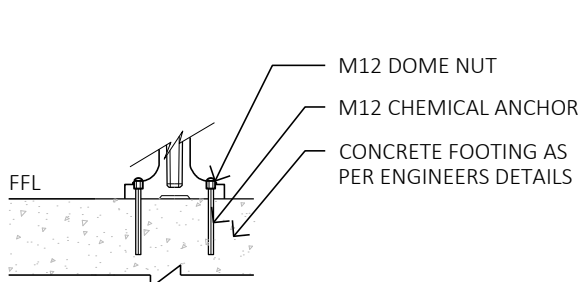
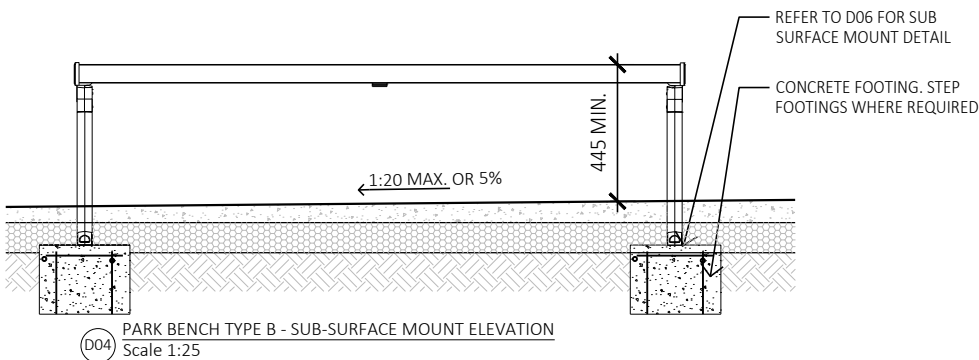
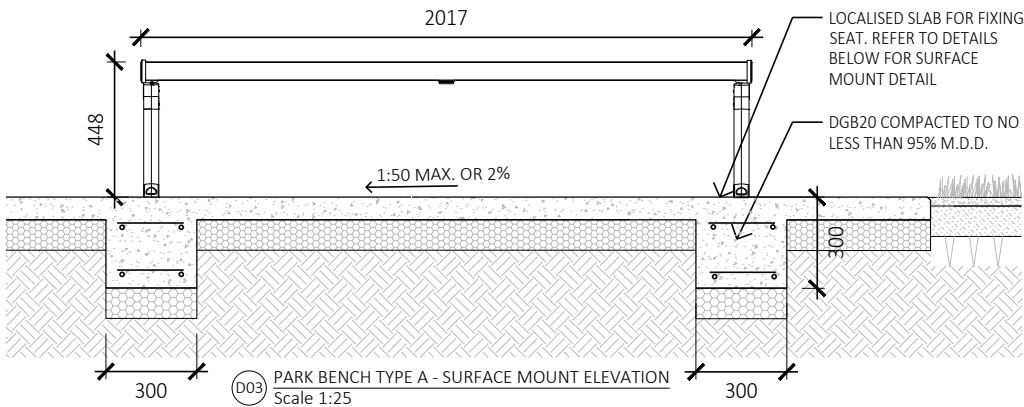
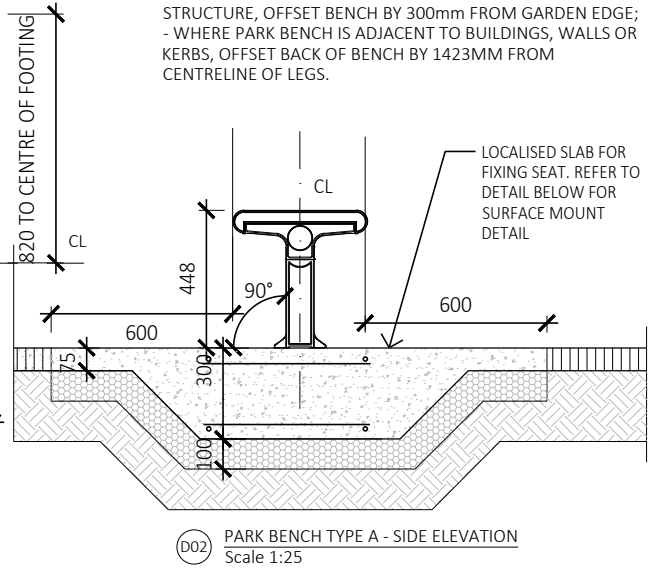
- Skate Stop - SPTP.EG.METRO

¹ Waverley Council, 2018, CM/7.20/18.11 Minutes of the Waverley Council Meeting Tuesday 20 November 2018, Waverley Council

Furniture And Fixtures Park Bench



NOTE:
 - WHERE PARK BENCH IS ADJACENT TO GARDEN BED OR OTHER STRUCTURE, OFFSET BENCH BY 300mm FROM GARDEN EDGE;
 - WHERE PARK BENCH IS ADJACENT TO BUILDINGS, WALLS OR KERBS, OFFSET BACK OF BENCH BY 1423MM FROM CENTRELINE OF LEGS.



E.05

Park Seat Table

Function

- Locate the Park Seat Table in playgrounds and areas where children frequent as it can be used as a picnic table, social gathering node and as a change table.
- Locate to receive ample shade in summer and partial shade in winter.

Supplier

- Tom Stoddart Pty Ltd (Town and Park)¹
1300 782 101

Product

- **Park Seat Table Type A:** Surface Mount.
 - SPTP.TSSD.T5.SP.1800
- **Park Seat Table Type B:** Sub-surface Mount.
 - SPTP.TSSD.T5.SS.1800

Material Specification

- Marine grade aluminium frame and post leg.
- Australian hardwood timber slats complying with one or all of the following:
 - Australian Forest Certification Scheme (AFS);
 - Forest Stewardship Council (FSC), or
 - Program for the Endorsement of Forest Certification (PEFC).
- Slats 1,800mm length.
- All bolts and fixings to be 316 Marine Grade Stainless Steel.
- Timber must be seasoned to prevent leaching of tannins.
- Coat with a commercial grade outdoor furniture oil which will not change the colour of the timber, and which is UV stable. Product equivalent to Dulux – Intergrain Nature's Timber Oil. Apply as per manufacturers recommendation.
- No signage / branding (manufacturer or Council) to be on furniture.

Installation

- Install as per manufacturers recommendations.
- Park Seat Table Type A: Surface mounted seats shall be installed on flat concrete surfaces only.
- Park Seat Table Type B: Sub-surface mounted seat tables shall be installed on segmented pavements, decomposed granite and concrete surfaces with a gradient greater than 1:50 or 2%.
- Set seats back from path of travel.
- Ensure a distance of 600mm is maintained as a clear-zone in order to provide access from all sides of the Park Seat Table.



Park Seat table Type A - Surface Mount

- Set seats back from path of travel. Accommodate wheelchair and pram users by extending the slab width 1000mm and connecting with a path to match existing surrounding colour and finish.
- Park Seat Table to be installed level and square to concrete pad or adjoining surfaces.

Maintenance

- Pressure wash
- Pre-treatment: Apply Intergrain Reviva or similar approved water based
- Finisher : Coat with product equivalent to Dulux – Intergrain Nature's Timber Oil. Apply as per manufacturers recommendation.
- First Onsite Application: 3-6 months after the installation.
- Second Onsite Application: 6-9 months after first onsite application.
- Ongoing Maintenance: Every 12 months.
- Graffiti removal as required.

Spare Parts

- Skate Stop - SPTP.EG.METRO

¹ Waverley Council , 2018, CM/7.20/18.11 Minutes of the Waverley Council Meeting Tuesday 20 November 2018, Waverley Council

E.06

Park Picnic Setting

Function

- The Park Picnic Setting shall be positioned in parks and open space zones or areas.
- Ensure a location is chosen which provides ample shade in summer and partial shade in winter.
- Primary purpose is for eating, but can be used as an area of rest/study.

Supplier

- Tom Stoddart Pty Ltd (Town and Park)¹
Ph: 1300 782 101

Product

- **Park Picnic Setting Type A:** Surface Mount.
 - SPTP.TSD.T5.SP.1800
- **Park Picnic Setting Type B:** Sub-surface Mount.
 - SPTP.TSD.T5.SS.1800

Material Specification

- Marine grade aluminium frame and post leg.
- Australian hardwood timber slats complying with one or all of the following:
 - Australian Forest Certification Scheme (AFS);
 - Forest Stewardship Council (FSC), or
 - Program for the Endorsement of Forest Certification (PEFC).
- Slats 2,000mm length.
- All bolts and fixings to be 316 Marine Grade Stainless Steel.
- Timber must be seasoned to prevent leaching of tannins.
- Coat with a commercial grade outdoor furniture oil which will not change the colour of the timber, and which is UV stable. Product equivalent to Dulux – Intergrain Nature's Timber Oil. Apply as per manufacturers recommendation.
- Umbrella Sleeve required when not under a shade structure.
- No signage / branding (manufacturer or Council) to be on furniture.

Installation

- Install as per manufacturers recommendations.
- Park Picnic Setting Type A: Surface mounted seats shall be installed on flat concrete surfaces only.
- Park Picnic Setting Type B: Sub-surface mounted picnic settings shall be installed on segmented pavements, decomposed granite and concrete surfaces with a gradient greater than 1:50 or 2%.
- Set seats back from path of travel.



Park Picnic Setting Type A - Surface Mount

- Ensure a distance of 600mm is maintained as a clear-zone in order to provide access from all sides of the bench.
- Accommodate wheelchair and pram users by extending the slab width 1000mm and connecting with a path to match existing surrounding colour and finish.
- Where access is provided for wheelchair and pram users, ensure that 1 end of the table is left clear of obstacles or reduce 1 seat length by 800mm.
- Setting to be installed level and square to concrete pad or adjoining elements

Maintenance

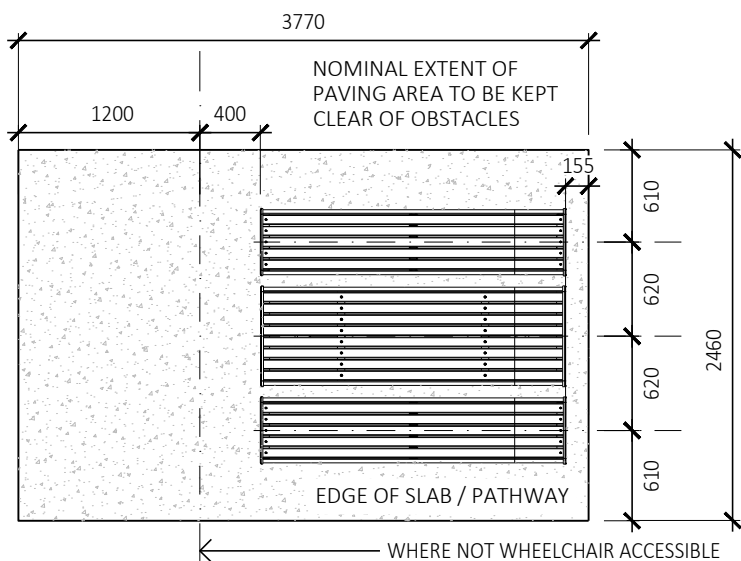
- Pressure wash
- Pre-treatment: Apply Intergrain Reviva or similar approved water based
- Finisher : Coat with product equivalent to Dulux – Intergrain Nature's Timber Oil. Apply as per manufacturers recommendation.
- First Onsite Application: 3-6 months after the installation.
- Second Onsite Application: 6-9 months after first onsite application.
- Ongoing Maintenance: Every 12 months.
- Grafitti removal as required.

Spare Parts

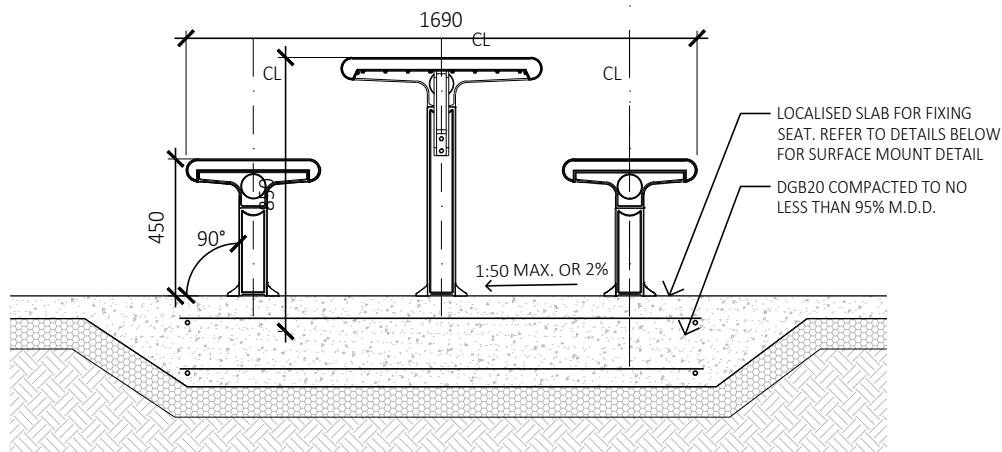
- Skate Stop - SPTP.EG.METRO

¹ Waverley Council, 2018, CM/7.20/18.11 Minutes of the Waverley Council Meeting Tuesday 20 November 2018, Waverley Council

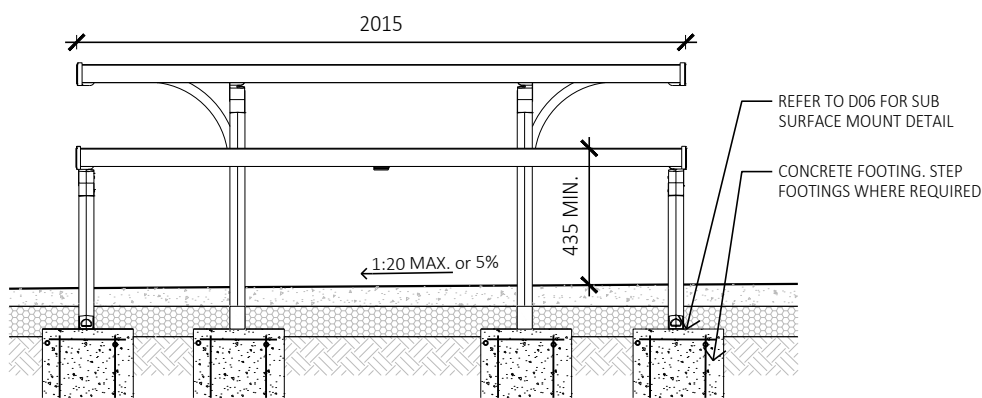
Furniture And Fixtures Park Picnic Setting



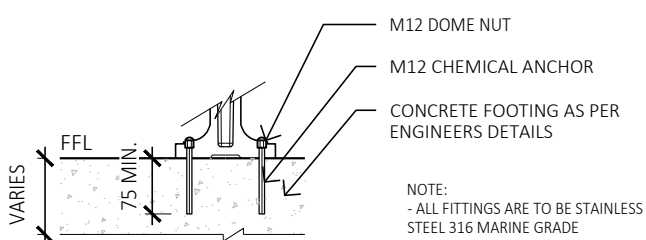
D01 PARK PICNIC SETTING - PLAN
Scale 1:50



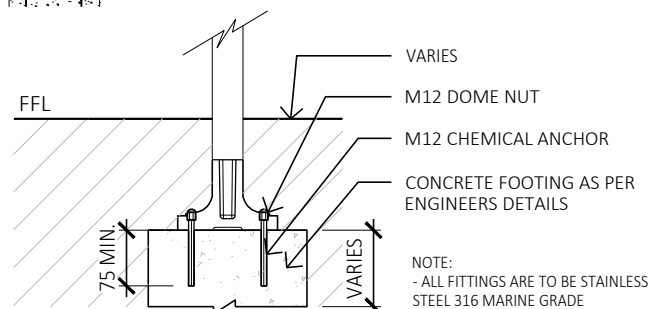
D02 PARK PICNIC SETTING TYPE A - SURFACE MOUNT ELEVATION
Scale 1:25



D03 PARK PICNIC SETTING TYPE B - SUB-SURFACE MOUNT ELEVATION
Scale 1:25



D04 DETAIL 04 - TYPE A SURFACE MOUNT
Scale 1:10



D05 DETAIL 05 - TYPE B SUB-SURFACE MOUNT
Scale 1:10

E.07

Standard Bicycle Rack

Function

- The Standard Bicycle Rack shall be positioned along cycle routes and at destination points such as public transport zones, beaches, playgrounds, shopping strips, commercial precincts and recreation precincts.
- All new car parks associated with parks and open spaces shall have provision for bicycle parking located close to the park entry/exit where there is adequate active or passive surveillance.
- One Standard Bicycle Rack is capable of accommodating two bicycles.
- All Standard Bicycle Racks are to be installed in accordance with AS2890.3: 2015 Bicycle Parking.

Supplier

- Clviq (Agwill Pty Ltd)¹
02 9737 0022

Product

- **Standard Bicycle Rack Type A:** Surface Mount.
 - CY-STHO-SM 316SS
- **Standard Bicycle Rack Type B:** Sub-surface Mount.
 - CY-STHO-BG 316SS

Material Specification

- Stainless Steel Marine Grade 316. Electro polished 600 grit MIN.
- All bolts and fixings to be 316 Marine Grade Stainless Steel.
- No signage / branding (manufacturer or Council) to be on furniture.

Installation

- Install as per manufacturers recommendations.
- Standard Bicycle Rack Type B: Sub-surface mounted bike racks to be installed in areas with segmented pavers on a sub-surface concrete footing. Cut pavers to fit neatly around base and conceal fixings.
- The Standard Bicycle Rack is to be used in pairs or in groups and can be set perpendicular, angled or parallel to the kerb or footpath to maintain a clear pedestrian path of travel. The positioning of the Standard Bicycle Rack depends on the available space and layout of other elements nearby. Standard Bicycle Racks shall be installed in such a way that the bicycle does not encroach into a walkway.



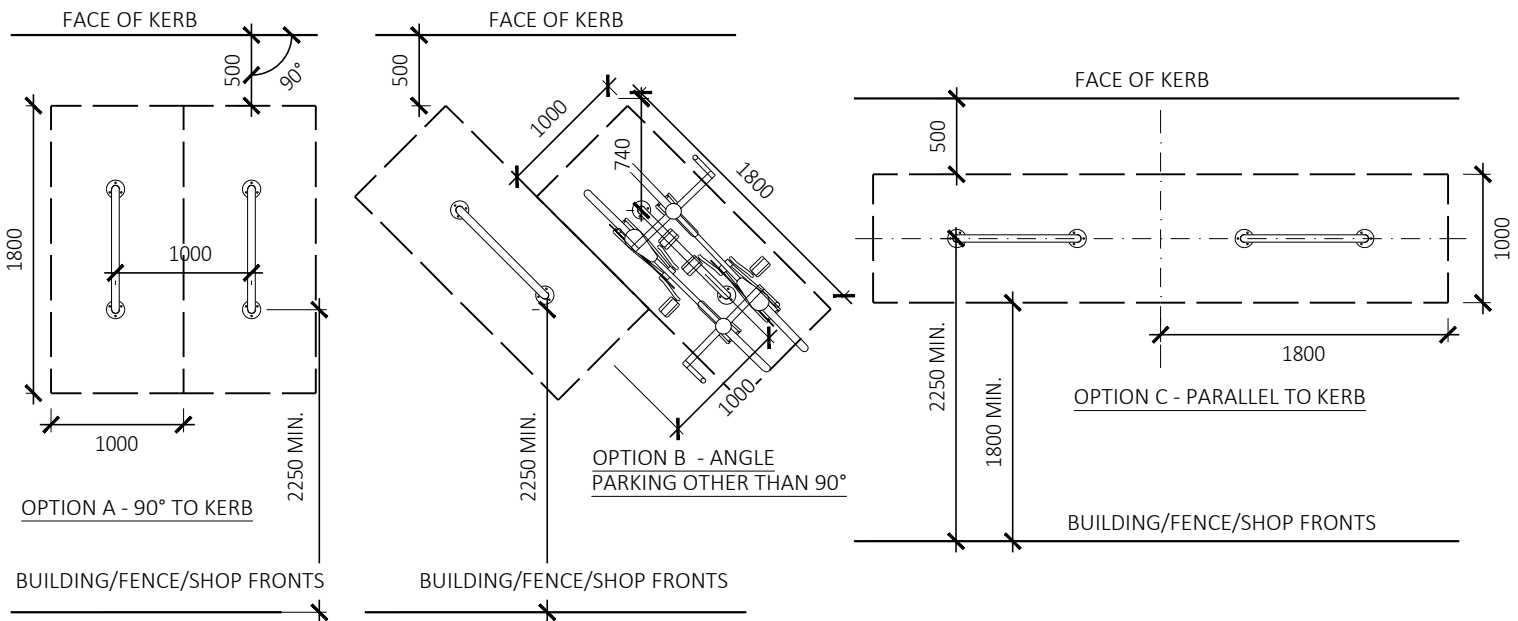
Standard Bicycle Rack Type B - Sub-surface Mount

Maintenance

- Clean as needed using a soft cloth or brush with a mild detergent. Avoid steam cleaning, abrasive cleansers, carbon steel brushes/wools and cleaners containing chlorine. Stainless steel cleaners may be used on stainless furniture to remove stubborn stains. A natural patina of minor scratches will always occur on highly polished surfaces. However, should minor repolishing be required, use metal polishing liquids.
- Deeper scratches and damage can sometimes be ground out and repolished, but this should be done professionally.
- Refer to manufacturers website for more info.

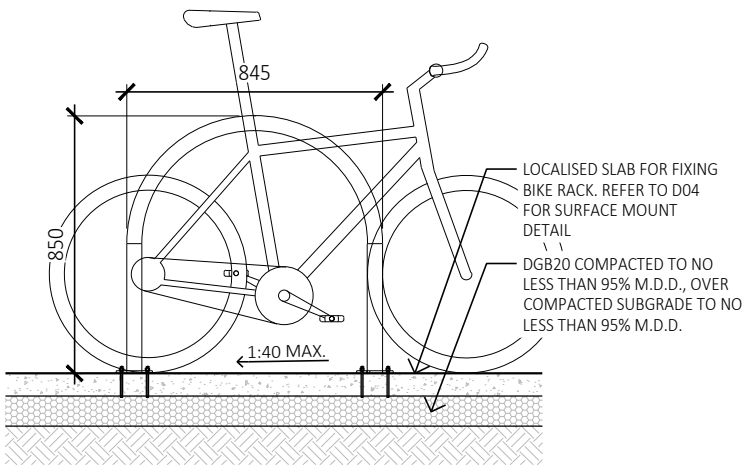
¹ Waverley Council, 2018, CM/7.20/18.11 Minutes of the Waverley Council Meeting Tuesday 20 November 2018, Waverley Council

Furniture And Fixtures **Standard Bicycle Rack**

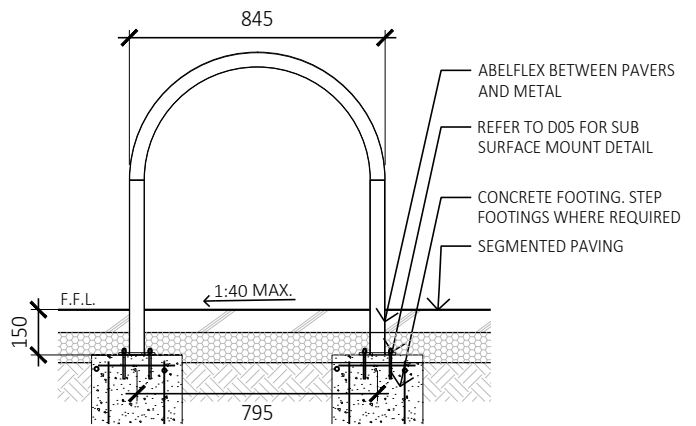


D01 STANDARD BICYCLE RACK - SETOUT PLAN WITH ALTERNATE LAYOUTS
Scale 1:50

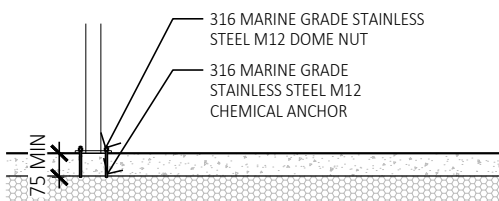
NOTE:
- ALL FIXTURES AND FITTINGS TO BE 316 MARINE GRADE STAINLESS STEEL



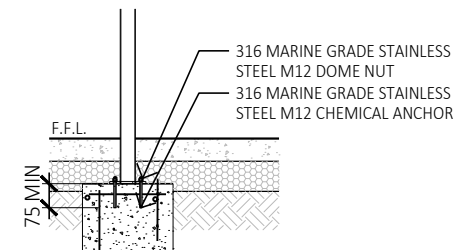
D02 STANDARD BICYCLE RACK TYPE A - SURFACE MOUNT ELEVATION
Scale 1:25



D03 STANDARD BICYCLE RACK TYPE B - SUB-SURFACE MOUNT ELEVATION
Scale 1:25



D04 SURFACE MOUNT DETAIL
Scale 1:25



D05 SUB-SURFACE MOUNT DETAIL
Scale 1:25

E.08

Bicycle Hoop

Function

- The Bicycle Hoop shall be located in situations where bicycle racks do not fit the physical constraints of the site, or where opportunities exist to increase bike parking.
- Located along cycle routes and at cycle destination points such as public transport, beaches, playgrounds and recreation facilities.
- Used in Bondi Junction, Bondi Beach, local centre streetscapes, plazas and malls.
- All Bicycle Hoops are to be installed in accordance with AS2890.3: 2015 Bicycle Parking.

Supplier

- Clviq (Agwill Pty Ltd)¹
02 9737 0022

Product

- O-Ring Pole Mounted Bike Rail
 - CY-PMRF

Material Specification

- 650x650mm with Galvanised Mild Steel finish.
- 48.3mm O.D pipe x 2.7mm wall (constructions).

Installation

- Install as per manufacturers recommendation.
- Secure to existing parking signage pole using 316 Marine Grade Stainless Steel anti-theft M10 bolts.
- Will suit a 60mm Dia. pole.
- Install on building side of pole.
- No signage / branding (manufacturer or Council) to be on furniture.

Maintenance

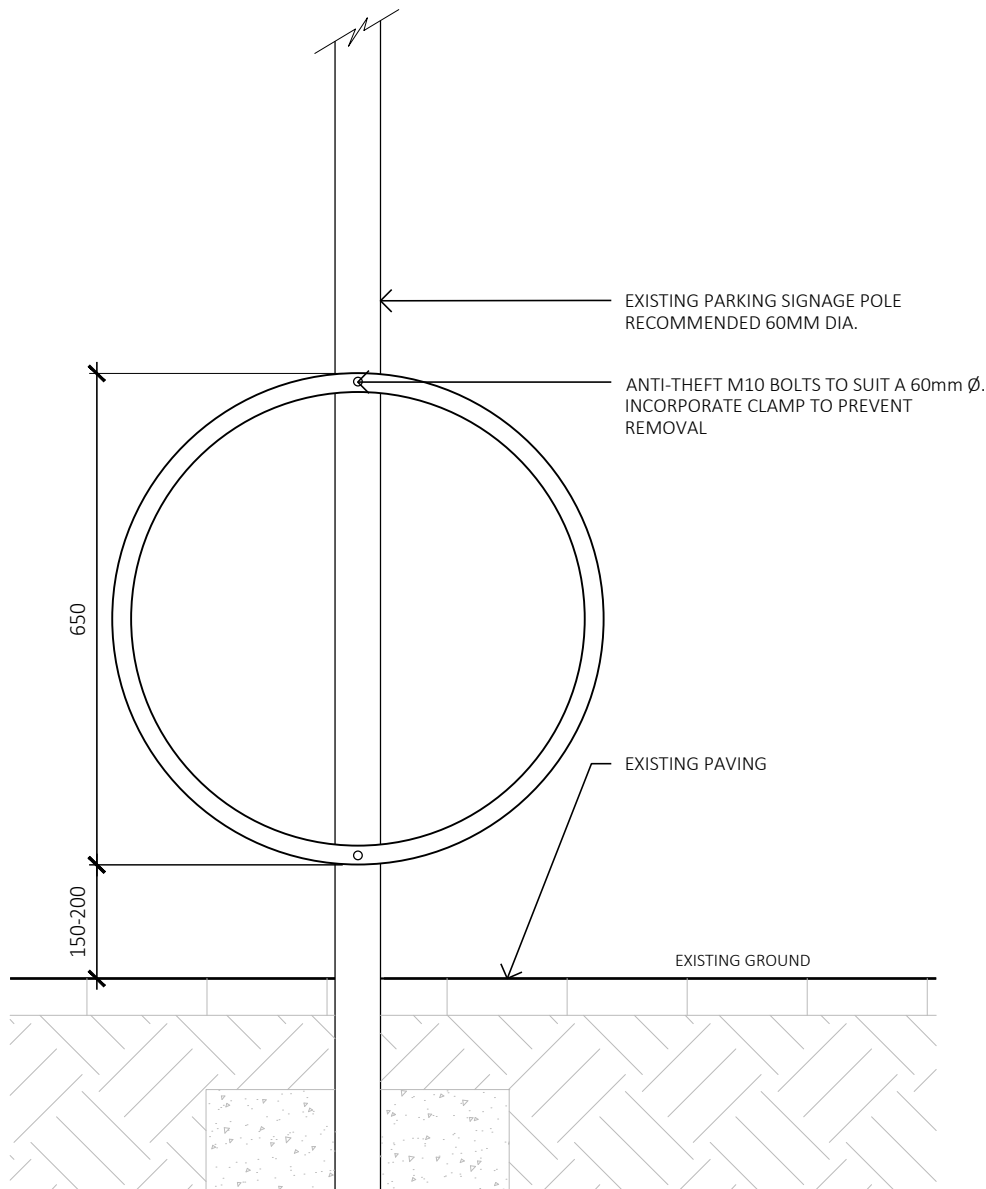
- Clean as needed using a soft cloth or brush with a mild detergent. Avoid steam cleaning, abrasive cleansers, carbon steel brushes/wools and cleaners containing chlorine. Stainless steel cleaners may be used on stainless furniture to remove stubborn stains. A natural patina of minor scratches will always occur on highly polished surfaces. However, should minor repolishing be required, use metal polishing liquids.
- Deeper scratches and damage can sometimes be ground out and repolished, but this should be done professionally.
- Check and tightern bolts every 3 months.
- Refer to manufacturers website for more information.



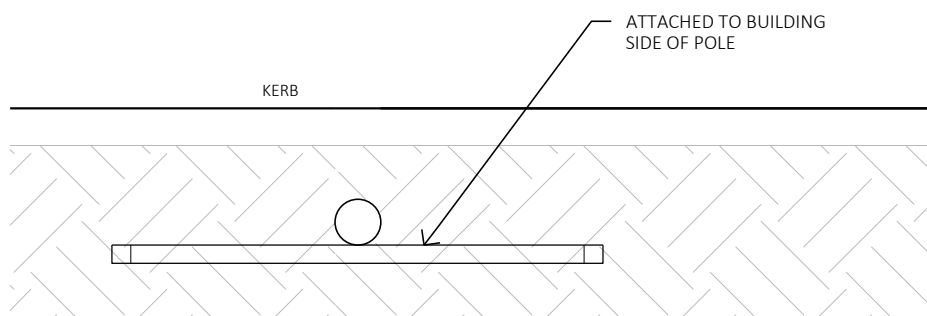
Bicycle Hoop attached to street signage pole

¹ Waverley Council, 2018, CM/7.20/18.11 Minutes of the Waverley Council Meeting Tuesday 20 November 2018, Waverley Council

Furniture And Fixtures **Bicycle Hoop**



(D01) BICYCLE HOOP POLE MOUNT DETAIL
Scale 1:10



(D02) BICYCLE HOOP POLE MOUNT PLAN
Scale 1:10

E.09

Bin Enclosure

Function

- The 240L Bin Enclosure is to be the standard bin used across the LGA.
- Stainless steel bins shall be used in coastal areas; Powdercoated bins shall be used in non-coastal areas.

Supplier

- E.P Draffin Manufacturing Pty Ltd¹
03 9720 1033

Product

- **Bin Enclosure Type A - Coastal:**
 - Single: 856/1F/1R/SS/WAV
 - Double: 866/1F/1R/SS/WAV
 - Triple: 876/2F/1R/SS/WAV
 - Quad Row: 886/2F/2R/SS/WAV
 - Quad Cluster: 886/2F/2R/SS/Q/WAV
- **Bin Enclosure Type B - Non-Coastal:**
 - Single: 856/1F/OR/WAV
 - Double: 866/1F/1R/WAV
 - Triple: 876/2F/1R/WAV

Material Specification

- **Bin Enclosure Type A - Coastal:**
316 Marine Grade Stainless Steel custom perforated panels to match Waverley Council bin theme.
- **Bin Enclosure Type B - Non-coastal:**
304 Stainless Steel custom perforated panels to match Waverley Council bin theme and to be powdercoated with Dulux N43 'Pipeline Grey'.
- Standard Features:
 - 316 Marine Grade Stainless Steel Frames
 - 316 Marine Grade Stainless Steel curved roof
 - Magnetic locking strip on door/frame
 - 316 stainless steel spring on door/frame
 - Door closing options - to be specified when ordering:
 - Option 1: Pull handle
 - Option 2: Keyless slam closure latch handle
 - Option 3: Keyed slam closure latch handle
 - Optional Extras - requirement to be confirmed with Council based on project:
 - Ash tray
 - Garbage/Recycle Signage
 - Dog Waste Dispenser attachments

Installation

- Install on a concrete pad footing as detailed. Consider surface or sub-surface mounting as directed by Council.
- Ensure door is easily accessible and does not obstruct pedestrian thoroughfare or car parking.
- Bins should be located near a road or path (close to park entrances), that is easily accessible by rubbish trucks. They should be located in clear view and not where they are visually obtrusive to car/pedestrian/bike view lines, and should be set back from paths and not encroach on the path of travel.
- No signage / branding (manufacturer or Council) to be on furniture unless specified.

Maintenance

- Powdercoated - External surfaces, including the underside and sheltered areas, should be washed down regularly, especially in corrosive conditions (eg. salt or chemical deposits). Surfaces that have become dull through prolonged exposure to sunlight can usually be revived by polishing. Automotive polish (non-cutting) can be used to restore a surface that has become scratched or abraded.
- Stainless steel - Clean as needed using a soft cloth or brush with a mild detergent. Avoid steam cleaning, abrasive cleansers, carbon steel brushes/wools and cleaners containing chlorine. Stainless steel cleaners may be used on stainless furniture to remove stubborn stains. Refer to manufacturers website for more information.

Spare Parts

- TBC

¹ Waverley Council, 2018, CM/7.20/18.11 Minutes of the Waverley Council Meeting Tuesday 20 November 2018, Waverley Council

E.10

Enviropoles

Function

- Enviropoles cigarette butt units are to be installed in areas across the LGA where there is cigarette butt litter or areas where there is a desire to direct smokers to a designated area.

Supplier

- Envirocorp Group Pty Ltd
T: 1300 428 887
E: info@enviropoles.com.au
W: www.enviropoles.com
47 Rodeo Drive, Dandenong South VIC 3175

Product

- Enviropoles cigarette butt units asset mounted and ground mounted models
- Asset Mounted - Compact 500 : 316 grade Stainless Steel, length 505mm, diameter 125mm, capacity 2000 butts.
- Ground Mounted - Bollard 500 : 316 grade Stainless Steel, length 910mm, diameter 125mm, capacity 3000 butts.
- These are designed to hold fluid that extinguishes any lit cigarettes.
- Sticker artwork with evidence based messaging required to be obtained from Council's graphic designer in the Communications Team. Stickers and/or decals include:
 - - Promotion that the butts are recycled.
 - - Floor decals with a message similar to "A clean space is a beautiful place".
 - - Stickers to go on the face of the enviropole that says 'just drop it in' or 'place lit cigarette inside' as users often butt out their cigarettes on the surface of these units with such enthusiasm that holes get plugged, and to avoid misperception that cigarettes need to be extinguished prior to depositing them inside the enviropole.
- Cigarette waste is collected by Envirocorp who remove contaminants and liquid before recycling the waste material via Terracycle.
- Locating Enviropoles:
 - Consultation with key stakeholders required for selecting enviropole locations as people tend to congregate and smoke at those locations which may impact people using or residing in the immediate area.
 - Locations selected must exclude smoke-free zones and comply with the NSW Smoke-Free Environment Act outlining the following "no smoking areas" :
 - a. 10 m from children playgrounds
 - b. 4 m from doorways
 - c. Spectator areas or sporting grounds
 - d. Bus stops, ferries, taxi ranks
 - e. Commercial outdoor dining areas



Enviropole - Asset Mounted



Enviropole - Ground Mounted

- Refer <http://www.health.nsw.gov.au/tobacco/Pages/smoke-free-laws.aspx> for more details.

Installation

- Asset mounted enviropole is supplied with 2 piece bracket with nyloc nuts for attachment to bin enclosures or a branded bracket for attachment to a pole.
- Installation by the supplier is optional and is included in contract price.
- Recommendations for installation of ground mounted bollard:
 - - If installed on pavers, ensure pavers are set in concrete/cement. If not, set pavers using cement with black oxide. In absence of pavers, core hole the bollards and set into the ground.
 - - Choose a site that is flat with concrete/cement deep enough to use large bolts to secure infrastructure to ground surface.
- Avoid installation in smoking exclusion zones

Maintenance

- Ongoing maintenance may include collection and recycling of cigarette butt waste by EnviroCorp.
- Data regarding enviropole fullness and equivalent number of cigarette butts collected is provided by the contractor via dropbox.

E.11

Stainless Steel Bollard

Function

- Used to separate pedestrians and vehicles and to prevent vehicle access onto footpaths, parks/reserves and pedestrian malls.
- To be located in Bondi Junction, all local and neighbourhood centres and particular urban parks (where nominated by council representative).
- The removable version is to be used where vehicle access is required. Ensure they are installed near vehicular access points.
- Where visibility is an issue, a band of red or contrasting reflector tape can be applied (only where nominated by council representative).
- A light can be incorporated into the bollard where pedestrian safety and/or visibility is an issue only when nominated by council representative.
- Do not clutter spaces - use the minimum amount required to create an effective vehicular barrier. Look for opportunities to combine with other elements to create effective vehicular barriers such as other furniture, trees and garden beds.

Supplier

- Unisite Group Pty Ltd¹
03 9720 1033

Product

- **Stainless Steel Bollard Type A - Fixed:**
 - 127BOLSM-SS
- **Stainless Steel Bollard Type B - Removable:**
 - 127BOLRMV

Material Specification

- **Stainless Steel Bollard Type A - Fixed:**
316 stainless steel electro-polished without propriety branding. 150mm DIA. 1000mm high above the ground.
- **Stainless Steel Bollard Type B - Removable:** 316 stainless steel electro polished without propriety branding. 150mm DIA. 1000mm high above the ground.
- 5mm sleeve with hinged cover.
- KAP (keyed alike assembly). KAP code to be specified with code # GB2830.
- Optional storage sleeve to be included only at request by council. Single or Double Sleeve.
- No signage / branding (manufacturer or Council) to be on bollards.

Installation

- Stainless Steel Bollard Type A - Fixed, and Stainless



Stainless Steel Bollard Type B - Removable

Steel Bollard Type B - Removable to manufacturer's recommendation.

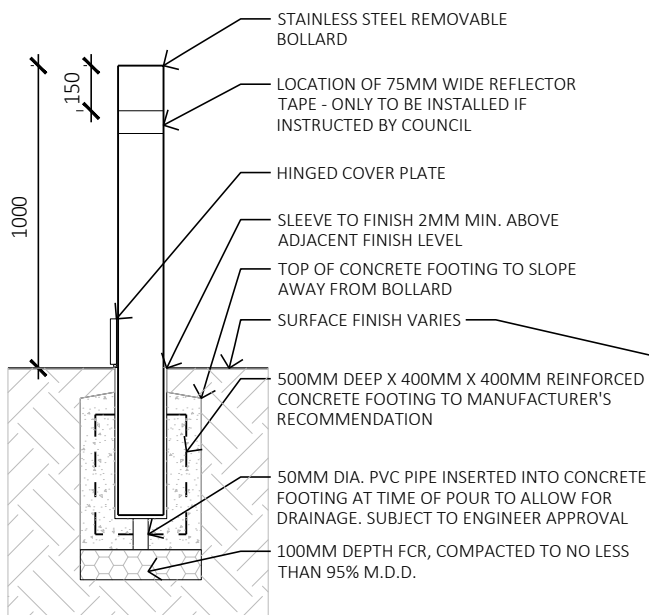
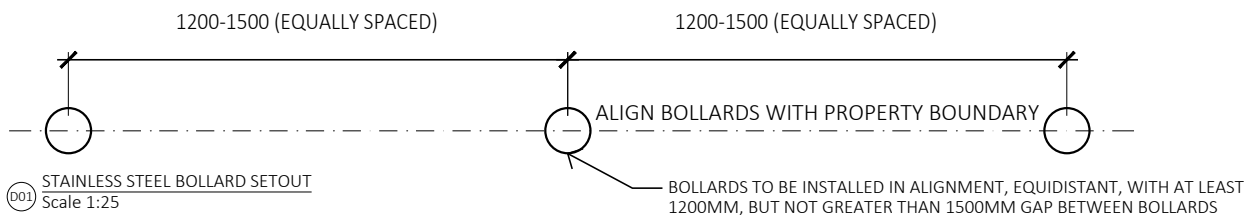
- Unless otherwise noted, align bollards with property boundary / building line.
- Do not use removable post for at least 2 days after installation.
- Install vertical and plumb and in a constant alignment.

Maintenance

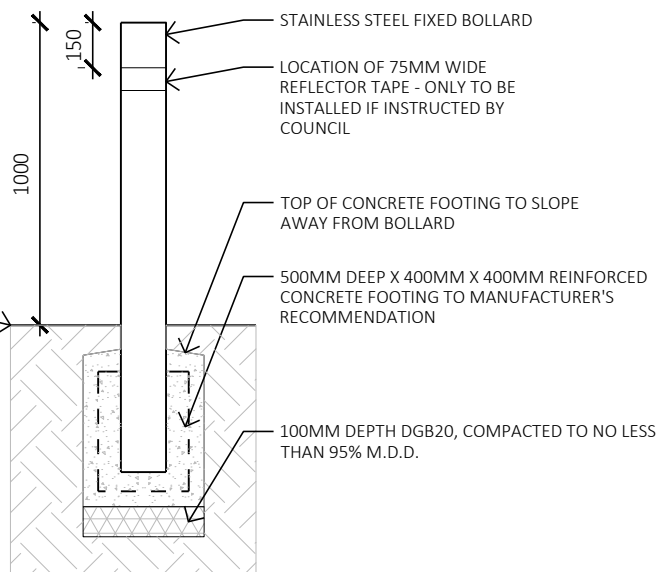
- Clean as needed using a soft cloth or brush with a mild detergent. Avoid steam cleaning, abrasive cleansers, carbon steel brushes/wools and cleaners containing chlorine. Stainless steel cleaners may be used on stainless furniture to remove stubborn stains. A natural patina of minor scratches will always occur on highly polished surfaces. However, should minor repolishing be required, use metal polishing liquids.
- Deeper scratches and damage can sometimes be ground out and repolished, but this should be done professionally.
- To maintain Removable bollards, it is recommended that the core holes be vacuumed out and kept as clean as possible.
- Refer to manufacturers website for more information.

¹ Waverley Council, 2018, CM/7.20/18.11 Minutes of the Waverley Council Meeting Tuesday 20 November 2018, Waverley Council

Furniture And Fixtures **Stainless Steel Bollard**



D02 STAINLESS STEEL REMOVABLE BOLLARD - DETAIL
Scale 1:25



D03 STAINLESS STEEL FIXED BOLLARD - DETAIL
Scale 1:25

E.12

Recycled Plastic Bollard

Function

- The Recycled Plastic Bollard is to be used across parks, reserves and open spaces.
- Recycled Plastic Bollards shall be used to separate pedestrians and vehicles, to prevent vehicle access into parks and (where appropriate), to protect planting.
- The removable version is to be used where vehicle access is required (ensure they are installed near vehicular access points).
- Do not clutter spaces - use the minimum amount required. Look for opportunities to combine with other elements to create effective vehicular barriers such as other furniture, trees and garden beds.
- Stainless steel wire can be incorporated between Recycled Plastic Bollards to form a fence barrier to vegetation areas that require protection such as Bush Care sites - refer to Fences and Barriers.

Supplier

- Contractor to nominate based on below specifications.
Product
- Recycled Plastic Bollard Type A - Fixed: Bollard cast inground concrete footing.
- Recycled Plastic Bollard Type B - Removable: Bollard slotted in inground socket with pad lock bracket.
- No signage / branding (manufacturer or Council) to be on furniture.

Installation

- Recycled Plastic Bollard Type A - Fixed to be installed in concrete footing.
- Recycled Plastic Bollard Type B - Removable to be installed in WC Removable socket with padlockable plate cover (must be ordered separately).
- Unless otherwise noted, align bollards with property boundary / building line.
- Do not use removable post for at least 2 days after installation.
- Install vertical and plumb and in a constant alignment.

Maintenance

- No special maintenance is required other than regular cleaning with mild detergent, clean water rinse and wipe down.
- Check stability every 6 months and reset as required.

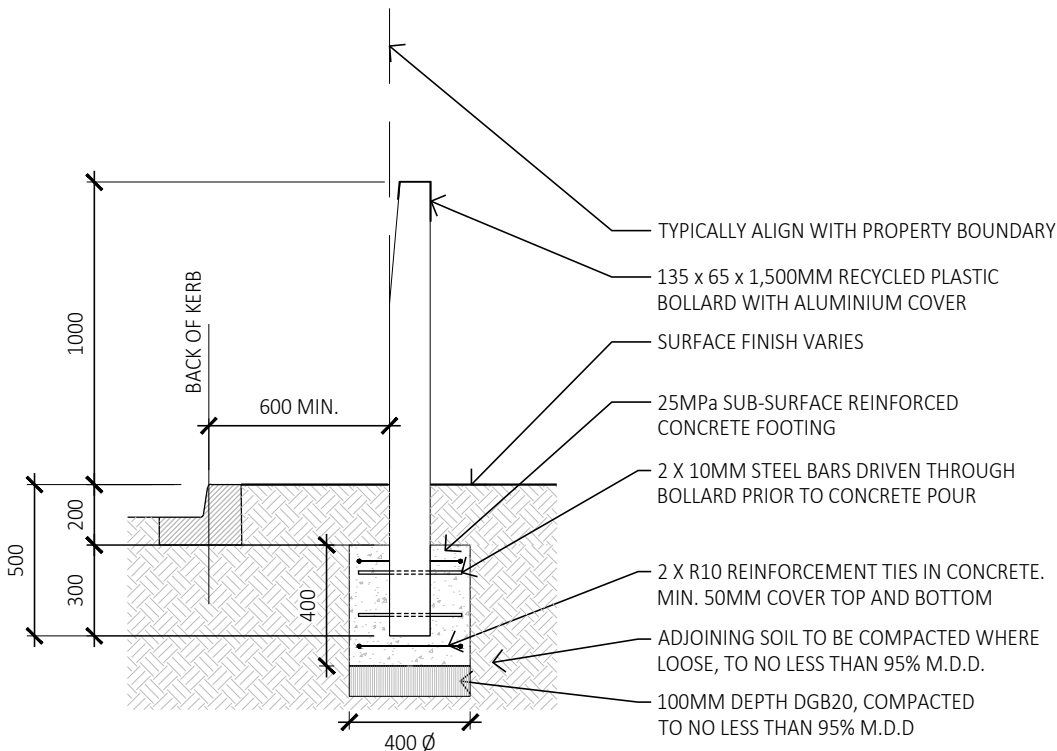
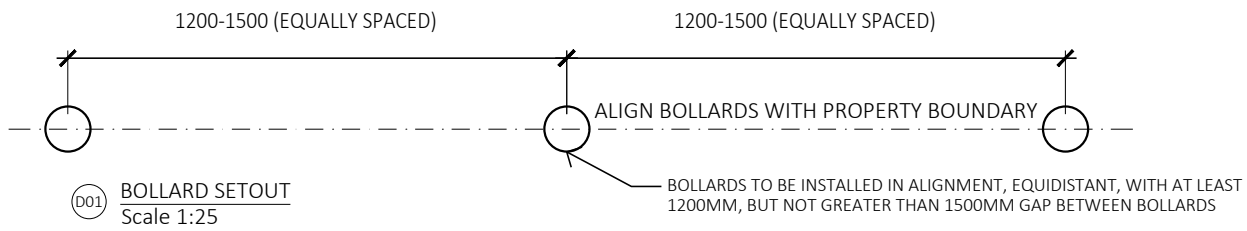


Recycled Plastic Bollard Type A - Fixed

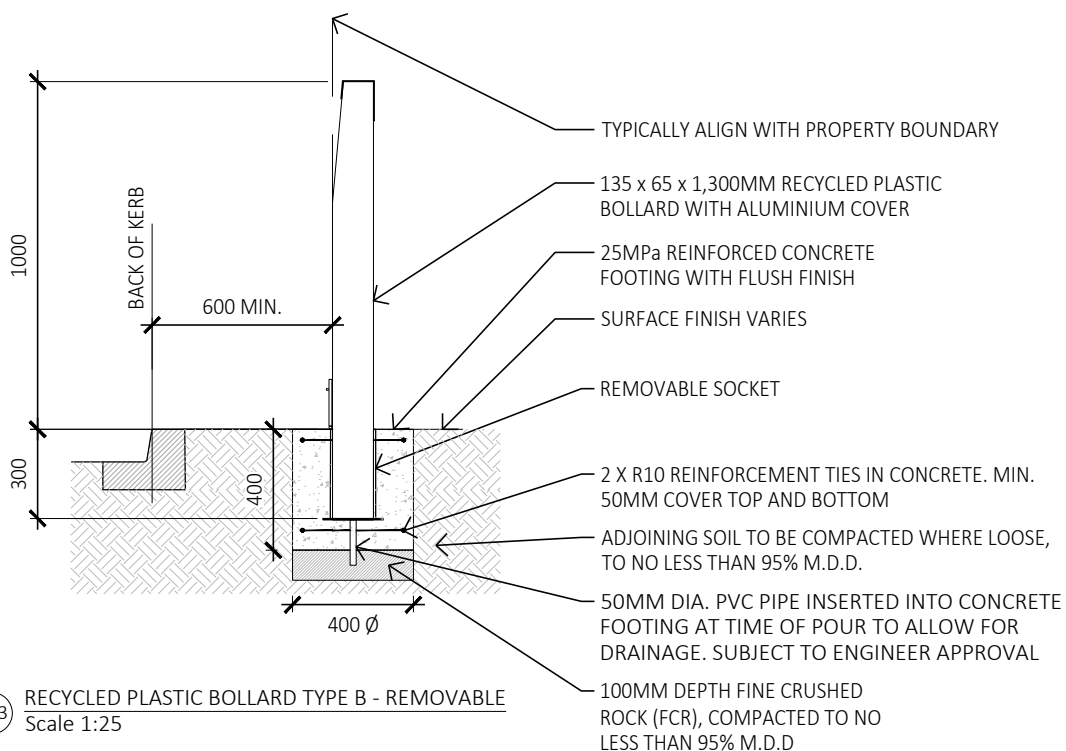


Recycled Plastic Bollard Type B - Removable, showing removable socket and locking mechanism

Furniture And Fixtures **Recycled Plastic Bollard**



D02 RECYCLED PLASTIC BOLLARD TYPE A - INGROUND
Scale 1:25



D03 RECYCLED PLASTIC BOLLARD TYPE B - REMOVABLE
Scale 1:25

E.13

Victorian Bollard

Function

- The Victorian Bollard is to be used in the Bondi Park central zone associated with the Pavilion only.
- Victorian Bollards may be used to separate pedestrians and vehicles and to prevent vehicle access into the park or pavilion.
- Bollards are not to be installed as a decorative element.
- Do not clutter spaces - use the minimum amount required.

Supplier

- Contractor to nominate based on below specifications.

Product

- **Victorian Bollard - Removable Socket:** Cast Aluminium Powder Coated Colour "Teal". 215mm W x 215mm D x 900mm H.

Installation

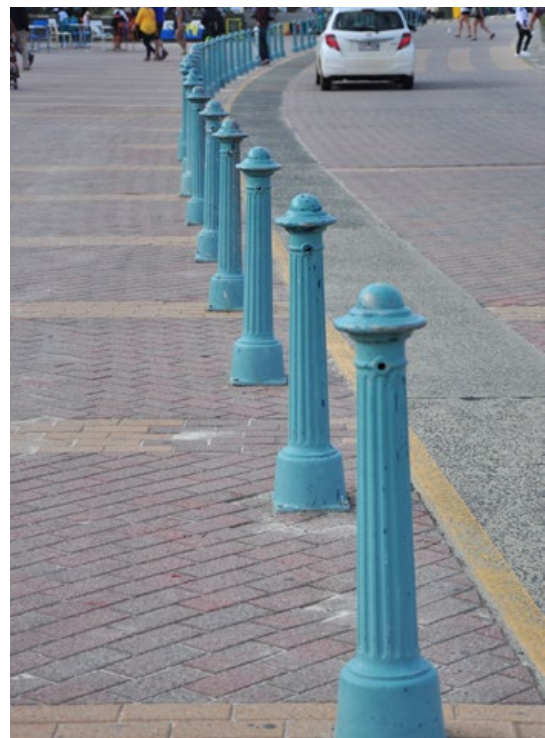
- Inground removable socket.
- Removable Bollards to be used in places where regular vehicular access / event access is required.
- Bollards are to be installed in alignment, equidistant, with at least 1000mm but no greater than 1500mm gap between bollards, to prevent vehicle access.
- Do not use removable post for at least 2 days after installation.
- Install vertical and plumb and in a constant alignment.

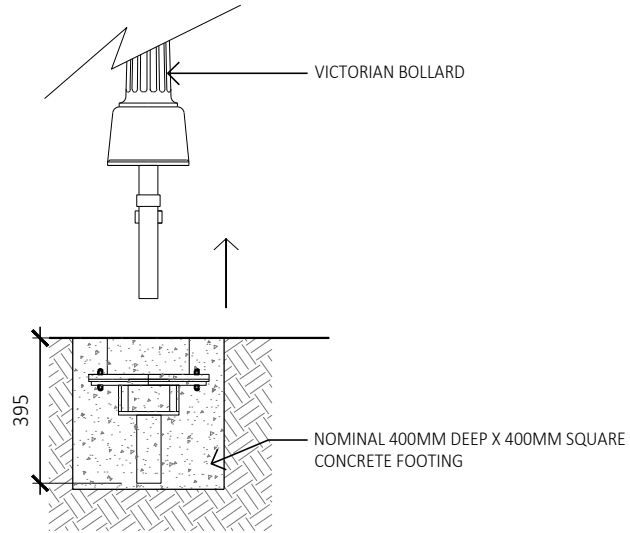
Maintenance

External surfaces, including the underside and sheltered areas, should be washed down regularly, especially in corrosive conditions (eg. salt or chemical deposits). Powder coated surfaces that have become dull through prolonged exposure to sunlight can usually be revived by polishing. Automotive polish (non-cutting) can be used to restore a surface that has become scratched or abraded.



Victorian Bollard





① D01 VICTORIAN BOLLARD - REMOVABLE SOCKET - DETAIL
1:20

E.14

Drinking Fountain

Function

- To be used everywhere as standard across the LGA. This includes Parks, Reserves, Bondi Junction, and all Local/Neighbourhood centres.
- Do not use dog bowl and modified frame where dogs are prohibited, eg. playgrounds.
- Position on paved areas to ensure ease of access for mobility challenged users.
- Ensure the drinking fountain does not encroach onto the path.

Supplier

- E.P Draffin Manufacturing Pty Ltd¹
03 9720 1033

Product

- **Drinking Fountain Type A - Standard Frame**
 - 88770/SB
- **Drinking Fountain Type B - Dog Bowl Frame**
 - 88770/DB/RB

Material Specification

- **Drinking Fountain Type A - Standard Frame:** 'Bent Leaf' Drinking Fountain. 316 Marine grade stainless steel. Electro polished finish. Standard frame to include bottle filling tap.
- **Drinking Fountain Type B - Dog Bowl Frame:** 'Bent Leaf' Drinking Fountain. 316 Marine grade stainless steel. Electro polished finish. Dog Bowl frame to include bottle filling tap and modified dog bowl.
- No signage / branding (manufacturer or Council) to be on furniture.
- Bottle filling tap to be used as standard.

Installation

- Position the drinking fountain in clear view.
- Sub-surface mount and bolt to a concrete footing using supplied galvanised steel rag cage and bolts.
- Connect drainage pipes to sewer. Alternatively, connect to soakage pit as approved by Council.
- The operating pressure is not to exceed 19.5N.
- Installation of all plumbing items shall be performed by a licensed plumber.
- All fountains must be supplied with a plumber's certificate once installed.
- Install vertical and plumb and in a constant alignment.
- Install a pit within close proximity of the bubbler with a shut-off valve for maintenance.



Drinking Fountain Type A - Standard Frame



Drinking Fountain Type B - Dog Bowl Frame

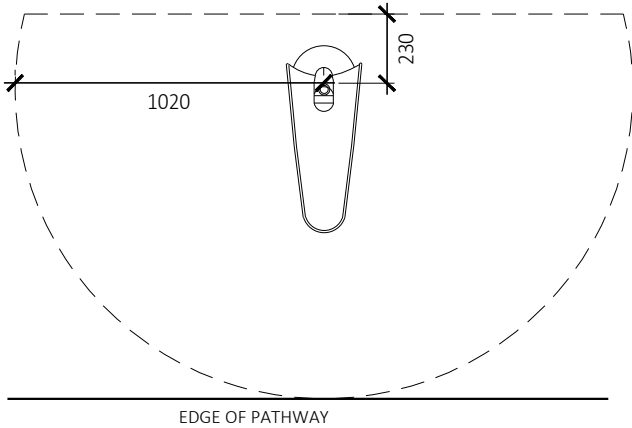
Maintenance

- Clean as needed using a soft cloth or brush with a mild detergent.
- Avoid steam cleaning.
- Abrasive cleansers, carbon steel brushes/wools and cleaners containing chlorine. Stainless steel cleaners may be used on stainless furniture to remove stubborn stains. A natural patina of minor scratches will always occur on highly polished surfaces. However, should minor repolishing be required, use metal polishing liquids.
- Deeper scratches and damage can sometimes be ground out and repolished, but this should be done professionally.
- Refer to manufacturers website for more information.

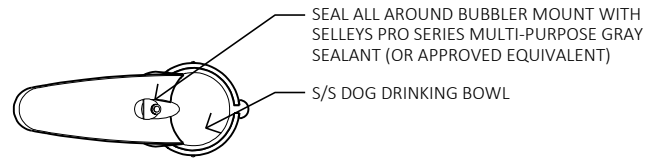
¹ Waverley Council, 2018, CM/7.20/18.11 Minutes of the Waverley Council Meeting Tuesday 20 November 2018, Waverley Council

Furniture And Fixtures Drinking Fountain

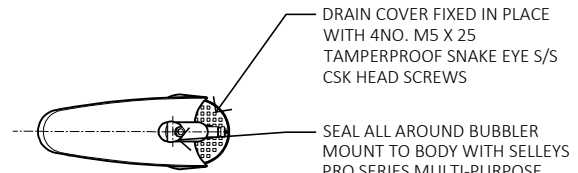
NOMINAL EXTENT OF PAVING. AREA TO BE KEPT CLEAR OF OBSTACLES TO PROVIDE ACCESS FROM EITHER SIDE OF BUBBLER TO CATER FOR MOBILITY CHALLENGED USERS



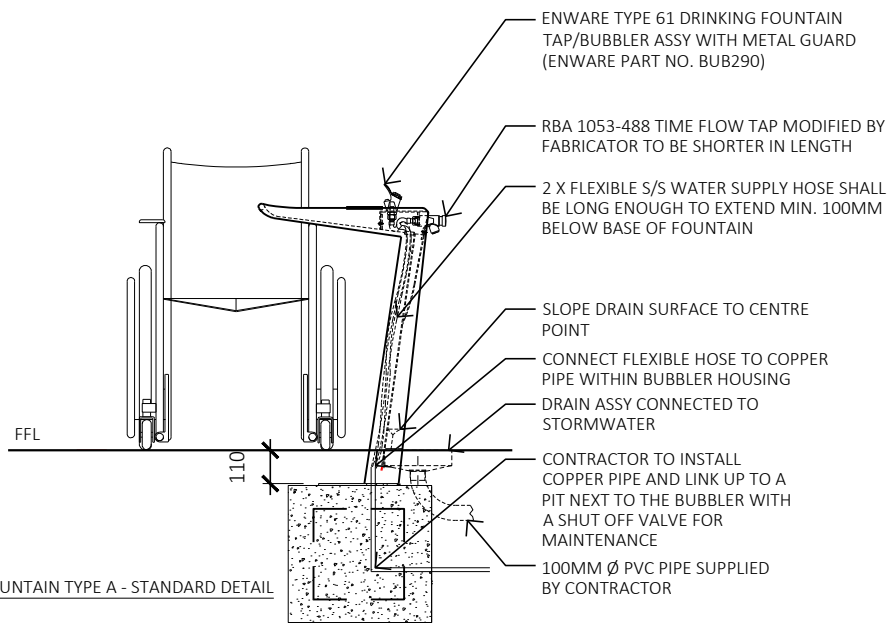
(D01) SETOUT PLAN
Scale 1:25



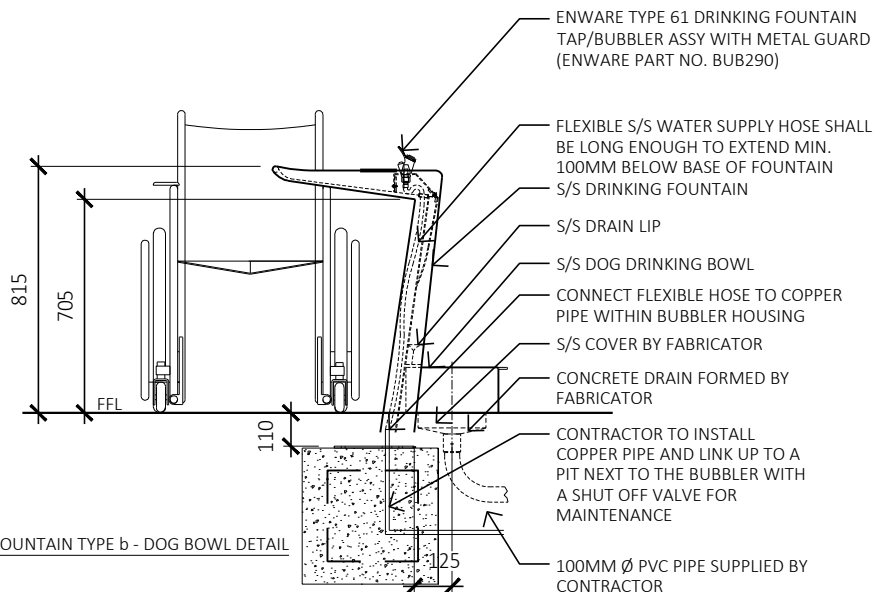
(D02) DOG BOWL FRAME TOP VIEW
Scale 1:25



(D03) STANDARD FRAME TOP VIEW
Scale 1:25



(D04) DRINKING FOUNTAIN TYPE A - STANDARD DETAIL
Scale 1:25



(D05) DRINKING FOUNTAIN TYPE b - DOG BOWL DETAIL
Scale 1:25

E.15

Beach Shower

Function

- Beach Showers are to be installed at beach locations as an outdoor shower to provide amenity for beach users.

Supplier

- Contractor to nominate based on below specifications.

Product

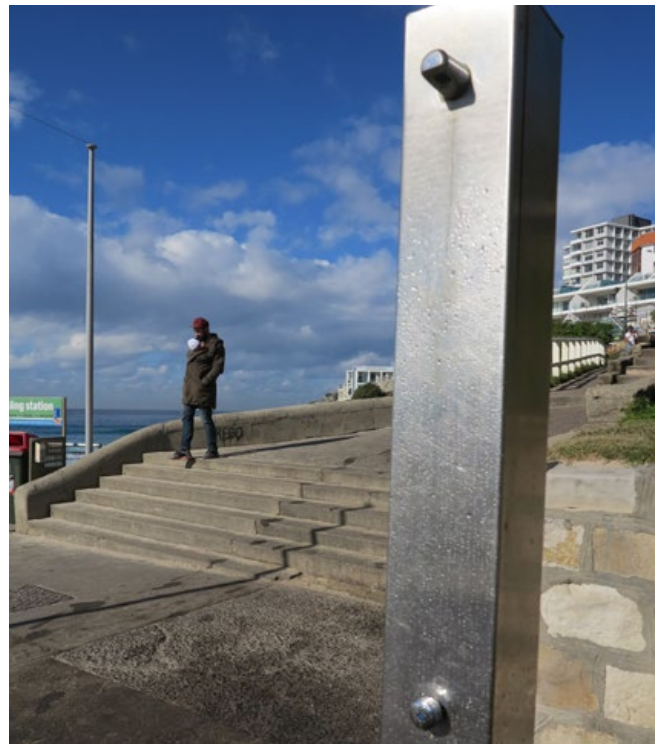
- Beach Shower Type A: Three Way Stainless Steel Shower Column (One Foot Wash Column) as a preference. Other configurations available to suit the location as per Council recommendations.
- 316 Marine grade stainless steel with electro polished finish.
- No signage / branding (manufacturer or Council) to be on furniture.
- Drainage requirements to be discussed with Council during design stage

Installation

- Locate beach showers at intervals along beach promenades near ramps, stairs and paths.
- Locate showers in clear view near entry and exit points to beach.
- Ensure a potable water connection point is in close proximity to the beach shower.
- Locate beach shower near existing drainage pits. If drainage pits do not exist, construct a 316 Marine Grade Stainless Steel channel drain surrounding the base of the shower at 1000mm from the column. Seek Council approval for drainage details.
- Position on paved areas to ensure equal access and set back to ensure that showers do not encroach on the path of travel.
- Ensure that the foot wash tap is easily visible from the primary approach.
- Refer to manufacturers instructions.
- Inlet connection 3/4" BSP (British Standard Pipe).
- Recommended Working Pressure 250-350kPa.
- Flow Rate 8 litres/minute.
- Install vertical and plumb and in a constant alignment.

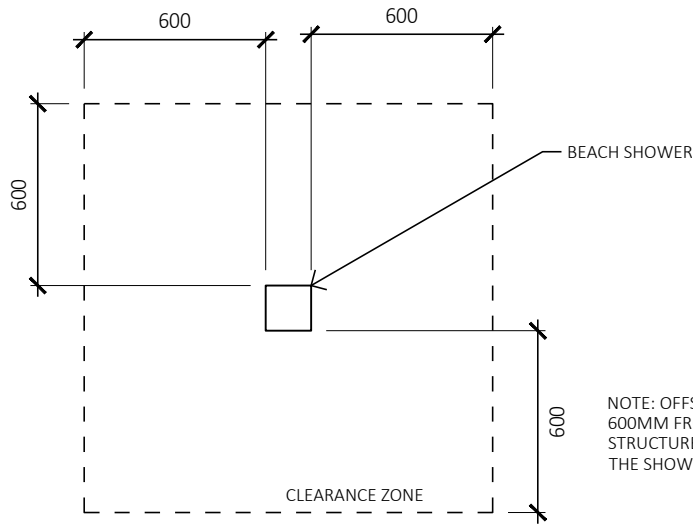
Maintenance

- Clean as needed using a soft cloth or brush with a mild detergent. Avoid steam cleaning, abrasive cleansers, carbon steel brushes/wools and cleaners containing chlorine. Stainless steel cleaners may be used on stainless furniture to remove stubborn stains. A natural patina of minor scratches will always occur on highly polished surfaces. However, should minor repolishing be required, use metal polishing liquids.



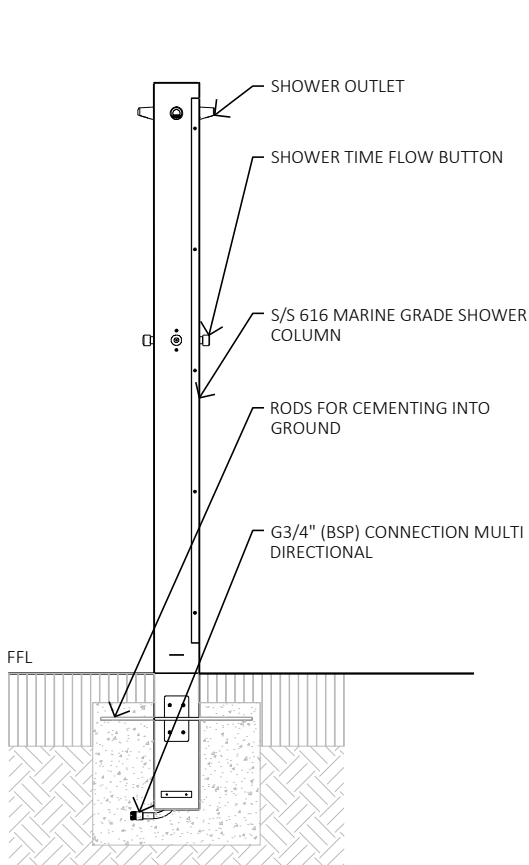
Beach Shower Type A, Bondi Beach

- Deeper scratches and damage can sometimes be ground out and repolished, but this should be done professionally.
- Refer to manufacturers website for more information.

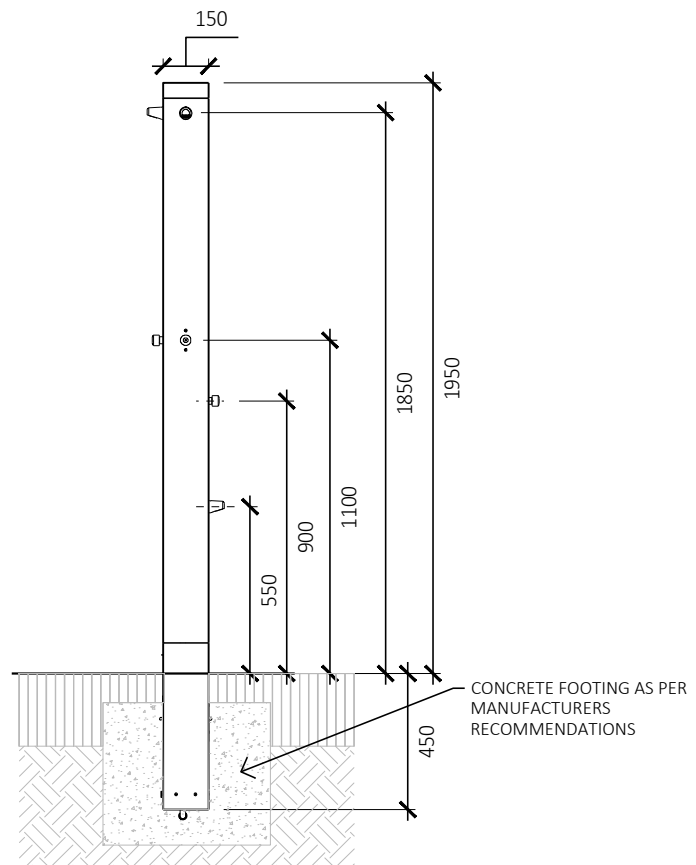


NOTE: OFFSET BEACH SHOWERS A MINIMUM OF 600MM FROM PATHWAYS, WALLS, AND ANY OTHER STRUCTURE. MAINTAIN VISIBILITY LINES AND ENSURE THE SHOWERS ARE LOCATED IN CLEAR VIEW

D01 BEACH SHOWER TYPE A - SETOUT PLAN
Scale 1:25



D02 BEACH SHOWER TYPE A - SIDE ELEVATION
Scale 1:25



D03 BEACH SHOWER TYPE A - SIDE ELEVATION
Scale 1:25

E.16

Skateboard Deterrent

Function

- Skateboard deterrents prevent skateboarders from causing damage via rail sliding and grinding on building features and landscape elements.
- They may be retrofitted to existing elements if necessary or incorporated into new work.
- Type 1A 'Skateboard Deterrent Dome Head Small' is the preferred deterrent to be used across the LGA.
- alternative options have been provided below

Supplier

- Contractor to nominate based on below specifications.

Materials and Dimensions

- Skateboard Deterrent Type 1A: Dome Head Small. Threaded, Solid 316 Stainless Steel, 10x20mm. Recommended spacing is 500 - 700mm (maximum) with 150mm from ends, and 25mm in from the edge.
- Skateboard Deterrent Type 1B: Cylindrical small. Threadless, Solid 316 Stainless Steel, 10x20mm. Recommended spacing is 500 - 700mm (maximum) with 150mm from ends, and 25mm in from the edge.
- Skateboard Deterrent Type 2A: Cylindrical Large. Threadless, Solid 316 Stainless Steel, 30x23mm. Recommended spacing is 500 - 700mm (maximum) with 150mm from ends, and 40mm in from the edge.
- Skateboard Deterrent Type 2B: Dome Head Large. Threadless, Solid 316 Stainless Steel, 15x30mm. Recommended spacing is 500 - 700mm (maximum) with 150mm from ends, and 30mm in from the edge.

Installation

- Recommended spacing is 500 - 700mm (maximum) with 150mm from ends. Spacing in from the edge varies according to the product. Refer to Product details.
- Attach with a 2-part masonry epoxy, ensuring excess epoxy is cleaned prior to drying.
- Alternative Treatments: It is preferable for skateboard deterrent measures to be integrated into the detail design. This can be achieved by:
 - incorporating steel inserts into jointing pattern;
 - using textured or heavily jointed masonry;
 - adding a steel strip along the top edge of a seat to protect it;
 - using heavily textured pavements at the base of seats or steps;
 - locating street furniture or other features to impede clear runs;
 - installing them on or near edges and slopes that may be used for jumps.

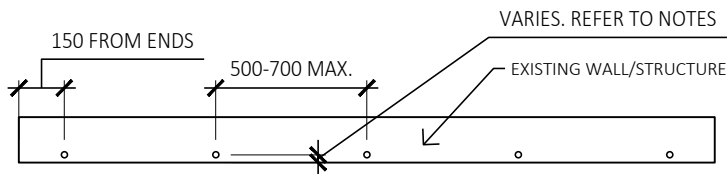
Maintenance



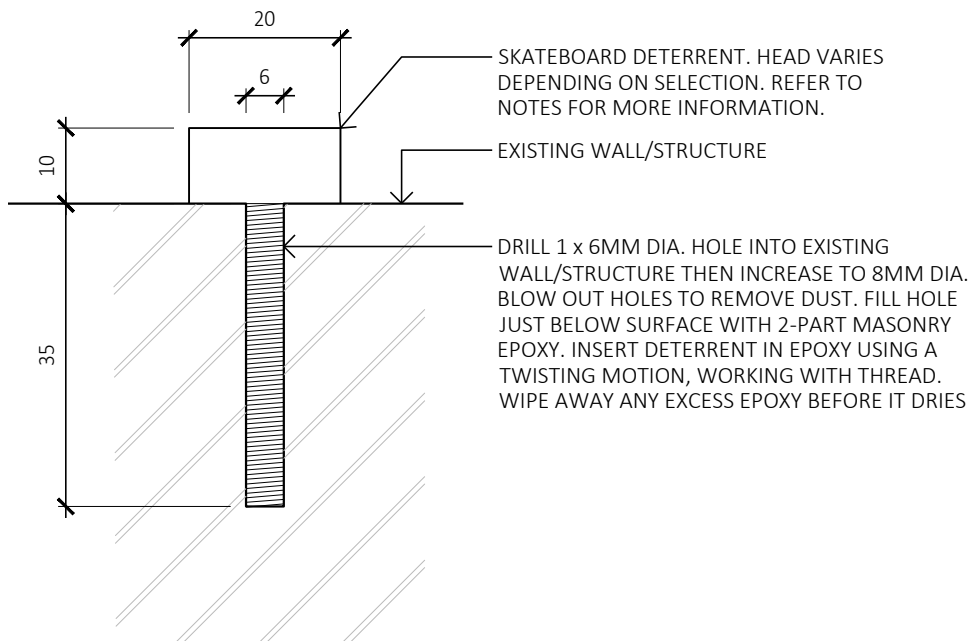
Skateboard Deterrent Type 1A - preferred deterrent to be used across the Waverley LGA

- Clean as needed using a soft cloth or brush with a mild detergent. Avoid steam cleaning, abrasive cleansers, carbon steel brushes/wools and cleaners containing chlorine. Stainless steel cleaners may be used on stainless furniture to remove stubborn stains. A natural patina of minor scratches will always occur on highly polished surfaces. However, should minor repolishing be required, use metal polishing liquids.
- Deeper scratches and damage can sometimes be ground out and repolished, but this should be done professionally.
- Check for loose fittings and tighten/replace every 6 months.

Furniture And Fixtures **Skateboard Deterrent**



D01 SKATE DETERRENT SETOUT PLAN
Scale 1:25



D02 TYPICAL SKATE DETERRENT DETAIL
Scale 1:1

- NOTE:
- SKATEBOARD DETERRENT TYPE 1A: DOME HEAD. INSTALL 25MM FROM EDGE;
 - SKATEBOARD DETERRENT TYPE 1B: CYLINDRICAL HEAD. INSTALL 25MM FROM EDGE;
 - SKATEBOARD DETERRENT TYPE 2A: CYLINDRICAL HEAD. INSTALL 40MM FROM EDGE;
 - SKATEBOARD DETERRENT TYPE 2B: DOME HEAD. INSTALL 30MM FROM EDGE.

