

WAVERLEY NEWS

Spring 2023



I'm 100% recyclable.

Put me in the blue recycling bin when you've finished reading me.

Your councillors

Bondi Ward



Dominic Wy Kanak
Greens
9083 8027
0499 291 333
dominic.kanak@waverley.nsw.gov.au



Leon Goltsman
Liberal
8006 2799
leon.goltsman@waverley.nsw.gov.au



Michelle Gray
Labor
0402 045 368
michelle.gray@waverley.nsw.gov.au

Hunter Ward



Sally Betts
Liberal
9130 3250
0425 363 530
sally.betts@waverley.nsw.gov.au



Steven Lewis
Labor
0447 141 144
steven.lewis@waverley.nsw.gov.au



Will Nemesh
Liberal
0426 247 680
will.nemesh@waverley.nsw.gov.au

Lawson Ward



Angela Burrill
Liberal
9114 8981
angela.burrill@waverley.nsw.gov.au



Elaine Keenan
Greens (Deputy Mayor)
0468 498 085
elaine.keenan@waverley.nsw.gov.au



Paula Masselos
Labor (Mayor)
0419 292 207
paula.masselos@waverley.nsw.gov.au

Waverley Ward



Ludovico Fabiano
Greens
0430 296 955
ludovico.fabiano@waverley.nsw.gov.au



Tim Murray
Labor
0411 046 476
tim.murray@waverley.nsw.gov.au



Tony Kay
Liberal
9365 7707
tony.kay@waverley.nsw.gov.au

Find your Ward Councillor: waverley.nsw.gov.au/councillors

Message from the Mayor

Welcome to the spring edition of Waverley News, Waverley Council's curated list of what to see, do and experience in Waverley on the lands of the Bidjigal, Birrabirragal and Gadigal people.

It's been almost a year since we celebrated the completion of our heritage conservation of the Bondi Pavilion which received a Public Architecture award at the 2023 New South Wales Architecture Awards and the coveted Judge's Choice Award at the 2023 National Trust Heritage Awards. We were so thrilled to have the Pavilion, and all those who worked on this important restoration, recognised in this way.

Council was also delighted to host the Hon. Anthony Albanese MP, Prime Minister of Australia to Bondi Beach in August to commemorate our restoration of the Pavilion, the beating heart of arts, culture and community in Waverley, with an official plaque unveiling and tour of the building.

I invite you to rediscover the Pavilion and experience its diverse program of events, exhibitions, workshops and activities,



including Bondi Pavilion Theatre's spring 2023 season. For more information, visit bondipavilion.com.au/whats_on.

To our environment, in August we celebrated the launch of the Waverley Council Net Zero Alliance to support Council in achieving its community target of net zero greenhouse gas emissions by 2035. Founding members will work with the Council and each other to reduce their carbon footprint and help make sustainability second nature. Everyone is welcome to join the Alliance so please visit waverley.nsw.gov.au/secondnature if you are interested in being part of this important initiative.

Waverley Council is continuing its education campaign about the upcoming



historic Voice to Parliament referendum taking place on Saturday 14 October. This vote will give all Australians the chance to come together and consider a change to our constitution that will honour and celebrate the rights, history, and ongoing relationship of Indigenous Australians with this land. Our Council supports the Uluru Statement from the Heart and the 'Yes' case for the referendum through a community education strategy. How you vote is up to you, and if you wish to find out more, visit voice.gov.au or refer to the Australian Electoral Commissions' Yes/No Pamphlet being distributed to all households.

To our beaches, and Council is continuing to promote the Float to Survive evidence-based water safety message, in conjunction with the 'Swim Between

the Flags' message over summer with the goal of reducing drownings across Australia. Developed in partnership with Randwick Council, Float to Survive promotes floating as the best chance of survival for swimmers who get into trouble in the water. Watch an instructional video about how to 'Float to Survive' on our website.

Awards season is also upon us with the announcement on 9 November of the winners of the major categories in the 2023 Mark and Evette Moran Nib Literary Award. On 13 November, we will be announcing the winners of the Waverley Brightest & Best Business Awards. To all our finalists: good luck!

Paula Masselos
Mayor of Waverley

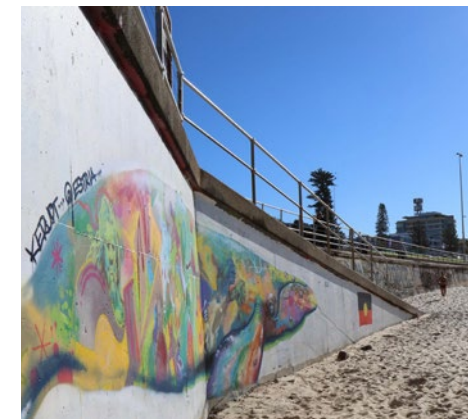
Aboriginal and Torres Strait Islander Voice

On Saturday 14 October, Australians will have their say in a referendum about whether to change the Constitution to recognise the First Peoples of Australia by establishing an Aboriginal and Torres Strait Islander Voice.

The Voice would be an independent and permanent advisory body that would give advice to the Australian Parliament and Government on matters that affect the lives of Aboriginal and Torres Strait Islander peoples.

Last year, Waverley Council unanimously voted to support the Uluru Statement from the Heart which calls for two substantive changes: the Voice to Parliament and a Makarrata Commission to supervise agreement-making and truth-telling about our First Nations history.

Council's position on the Uluru Statement reflects our ongoing commitment to reconciliation as outlined in our Innovate Reconciliation Action Plan (RAP), adopted in 2019.



The RAP outlines Council's vision for a vibrant, resilient, caring and inclusive community where Aboriginal and Torres Strait Islander peoples practice and celebrate their culture and heritage proudly, are honoured for their survival and resilience, respected and acknowledged as First Nations peoples with the right to determine their own futures, and supported to continue to overcome adversity.

How you vote in the upcoming referendum is up to you and it is important that people have access to information that will help them make their decision.



We encourage our community to read through the Australian Electoral Commission's referendum information pamphlet being distributed to all households or visit [voice.gov.au](https://www.vote.gov.au) for more information.

What would the Aboriginal and Torres Strait Islander Voice do?

- The Voice will give independent advice to the Parliament and Government.
- The Voice will be accountable and transparent.
- The Voice will work alongside existing organisations and traditional structures.

How would the Aboriginal and Torres Strait Islander Voice be set up?

- The Voice will be chosen by Aboriginal and Torres Strait Islander people based on the wishes of local communities.
- The Voice will be representative of Aboriginal and Torres Strait Islander communities, gender balanced and include youth.
- The Voice will be empowering, community-led, inclusive, respectful and culturally informed.

Tackling climate change through innovation and collaboration



Hundreds of new trees planted throughout Waverley

In the last 12 months we've planted approximately 460 trees in Waverley to help cool our urban spaces and improve vital wildlife corridors for feathery friends. This is on top of maintaining our remnant bushland areas and improving native vegetation at Bronte and Tamarama Gully.

Looking ahead, we're aiming to have 1,000 habitat gardens established by 2030 but we need your help to get there. If you have a garden, courtyard or suitable balcony, join our Living Connections program to receive free native seedlings and advice on how to make the most of your green space to help native wildlife thrive. Visit [waverley.nsw.gov.au/livingconnections](https://www.waverley.nsw.gov.au/livingconnections) for more information.



Members of the Waverley Council Net Zero Alliance gathered at Bondi Pavilion in August 2023.

Help us reach net zero

Last month leading businesses and community groups gathered at Bondi Pavilion for the launch of the Waverley Council Net Zero Alliance.

Council is committed to achieving a community target for net zero greenhouse gas emissions by 2035 but we cannot do it alone. That's why this Alliance has been formed, with members pledging their support to help make sustainable living second nature in Sydney's east.

Members of the Alliance include the Sydney Roosters, Waverley College, St Catherine's School, Sydney and the Bondi & Districts Chamber of Commerce.

Reducing our carbon footprint, one road at a time

Did you know Waverley Council is one of the first councils in Australia to use a special road surfacing material containing 70 per cent reclaimed asphalt pavement (RAP)? We've been using RAP for many of our recent road improvement projects and as a result, have helped prevent a whopping 39 tonnes of CO₂ emissions from entering our environment.



Go electric

As part of our commitment to reach net zero by 2035, we're supporting the community to reduce their greenhouse gas emissions and make the switch from natural gas appliances and petrol cars to electric alternatives. How are we doing it?

- Creating a comprehensive electric vehicle (EV) charging network around the eastern suburbs with many more charging stations coming in the next twelve months.
- Delivering renewable energy initiatives including *Solar my School*, *Solar my Suburb* and *Building Futures*.
- Providing a Go Electric checklist giving Waverley residents the knowledge and resources to help transition to all-electric homes.
- Updating our Development Control Plan (DCP) to support all-electric households.

Find out more at waverley.nsw.gov.au/secondnature.



Fostering innovation at the new Boot Factory

The restoration of the former Boot Factory in Bondi Junction is well and truly underway with the building set to reopen to the public early next year following the the appointment of Schiavello Constructions (NSW) Pty Ltd in June 2023 to complete the works.

In anticipation of this, Waverley Council is launching a Thinker-In-Residence program that will bring together change makers and innovators to develop

ideas that enhance Waverley's climate resilience and circular economy.

Expressions of interest to join the 12-month pilot program are open until 29 September.

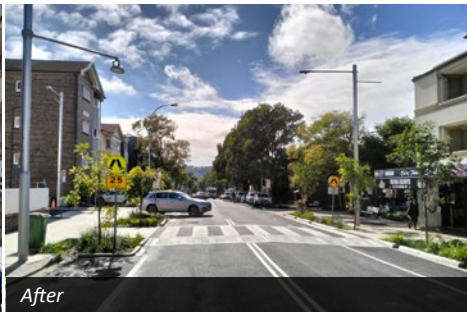
Visit haveyoursay.waverley.nsw.gov.au to find out more and apply.

Upgrades put safety first

Waverley Council is putting its best foot forward to ensure our streets are safe for pedestrians, bike riders and vehicles.

Over the last few months you may have noticed new footpaths, crossings, bike lanes, trees and gardens across the LGA. These upgrades are all designed to help modernise our streetscapes and mobilise more safely. Here's a snapshot of some of the projects we've recently completed.

Glenayr Avenue, Bondi



Tamarama Marine Drive



Langlee Street, Bronte



Safe routes to school

We're committed to making the journey to and from school safer for kids – whether they walk, scoot or ride to school.

As part of this commitment, Waverley Council is partnering with Bondi Beach Public School, Bondi Public School, Bronte Public School, Galilee Catholic School and Waverley College to establish safer walking routes.

Over the coming months, Council will continue to engage directly with schools and parents to understand what issues may be impacting how kids commute and what we can do to help. To find out more about the program and other upgrades happening around the community, visit haveyoursay.waverley.nsw.gov.au/safe-routes-school-survey.



A trip down memory lane

How well do you know your local history?

Staff from Waverley Library have put together a collection of stories showcasing the people and places that have helped define our community and create a surf culture that has become a permanent part of Australia's national identity.

From beach riots in the 1880s through to bikini arrests in the 1940s, there is more to Waverley than meets the eye.

Check out our collection of historical stories and images at waverley.nsw.gov.au/library.

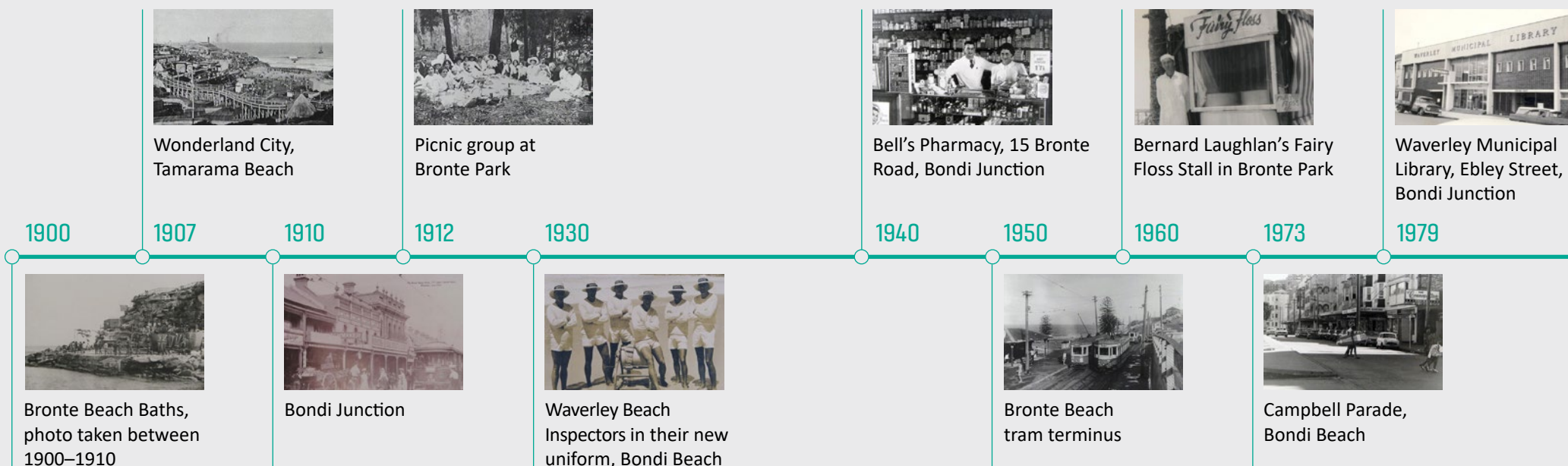
Digitise your family history

Do you have old VHS tapes, negatives, slides or photographs with treasured family memories that are sitting around, unable to be viewed?

Waverley Library's free Digitisation Station lets you convert your valuable records into digital format. We are the first library in NSW to offer this fantastic service!

Call 9083 8733 to make a booking and bring your memories to life.

Here's a snapshot of what you'll find:



Why your batteries don't belong in the bin

Batteries power many parts of our day-to-day lives but the one place they don't belong is in our bins at home.

Why? Because even when a battery is 'dead', it has hazardous chemicals stored within it can cause a spark and lead to fires.

Council staff were reminded of this recently when the garbage truck they were driving caught fire in Sir Thomas Mitchell Road, Bondi Beach. It was determined that the source of the ignition was from a lithium battery being crushed in the truck's compactor after collecting waste in the area.

Thankfully no one was injured but it is a timely reminder to make sure you do the right thing when disposing of old batteries.

So where should they go?

Take your old batteries to a dedicated collection site.

There are plenty around the Waverley LGA including at Waverley Library and our Customer Service Centre in Spring Street, Bondi Junction. For more information on other battery collection locations around Waverley visit bcycle.com.au.



What's on at the Pav

As the days get warmer and the sun sets a little later, it's time to mark your calendars for an unforgettable spring season at Bondi Pavilion.



Jude Perl's Greatest Hits: So Fresh

Friday 15 September, 8pm

Prepare for a night of award-winning songwriting, hilarious storytelling, and musical absurdity with Jude Perl. She's bringing her mental health bangers to the stage in a one-hour extravaganza that promises to leave you in stitches.



An Evening with Ursula Yovich

Friday 22 September, 7.30pm

The multi-talented Ursula Yovich, along with Midnight Oil's Adam Ventoura and an incredible live band, will take you on a soulful journey through storytelling and song.



Bedrock by Hannah Quinlivan

Saturday 30 September, 10am

Immerse yourself in contemplation with Hannah Quinlivan's stunning exhibition, *Bedrock*. See the work of this extraordinary contemporary Australian artist who expands the field of drawing in her stunning works.

Find out more about what's on at the Pav and book tickets at bondipavilion.com.au.

Contact us



waverley.nsw.gov.au



9083 8000



info@waverley.nsw.gov.au



Subscribe to our eNews:
waverley.nsw.gov.au/subscribe



Facebook: /whatsonwaverley



Instagram: /waverleycouncil



Twitter: /WaverleyCouncil



Customer Service Centre

55 Spring St, Bondi Junction,
NSW 2022

9am–5pm, Monday to Friday



Bondi Pavilion Welcome Centre

Queen Elizabeth Drive,
Bondi Beach NSW 2026

10am–4pm, Monday to Sunday



Switch to e-Rates

Help save paper by registering to receive your rates notice by email. Register today at waverley.nsw.gov.au/erates to view and pay your rates online. It's that easy!

Waverley Council acknowledges the Bidjigal, Birrabirragal and Gadigal people who traditionally occupied the Sydney Coast and we pay our respects to Elders past, present and future.