

Dewatering Tips

Before removing any excess water from your site, please make sure you:

- Attain Council permission before dewatering into the stormwater system
- Locate a suitable release point for the end of the hose or pipe
- Have a qualified staff member test your water, determine if treatment is needed and ensure the water leaving the site complies with the criteria specified in your development consent and/or the ANZECC Water Quality Guidelines (2000)
- Properly treat and filter water to get rid of contaminants (50mg/L of TSS)
- Consider using additives to adjust pH and flocculants to drop out sediments and reduce TSS
- Re-test your water and re-treat it if needed
- Do not take the water from the bottom of the excavation or sediment trap as it will bring unsettled sediments
- Do not leave the hose or pipe without supervision to ensure pollution and flooding does not occur



Development consents and environmental legislation

Under the *Protection of the Environment Operations Act 1997 (POEO)*, it is illegal to allow cement, slurry, soil and/or other building materials to enter any waterway or part of the stormwater system. This includes street gutters, creek lines and swales. Breaches to this legislation can result in heavy fines or prosecutions in court.

Fines: Fines can range from \$4,000 to 7,500 for individuals and \$7,500 to \$15,000 for corporation (Protection of the Environment Operations Act 1997) depending on the fine being issue by a Council Officer or an EAP Officer.

Prosecutions in court: \$1 million for individuals, \$250,000 for individuals (Protection of the Environment Operations Act 1997).

EROSION AND SEDIMENT CONTROL

Welcome to Waverley!

Waverley is a unique and beautiful corner of the world. Waverley Council and the community are committed to keeping it this way. As incredible as our home is, it needs your help to continue to thrive.

Join us and help us to protect Waverley by ensuring you make smart erosion control and sediment Second Nature!



second
nature



second
nature



How can controlling erosion and sediment run-off benefit you?

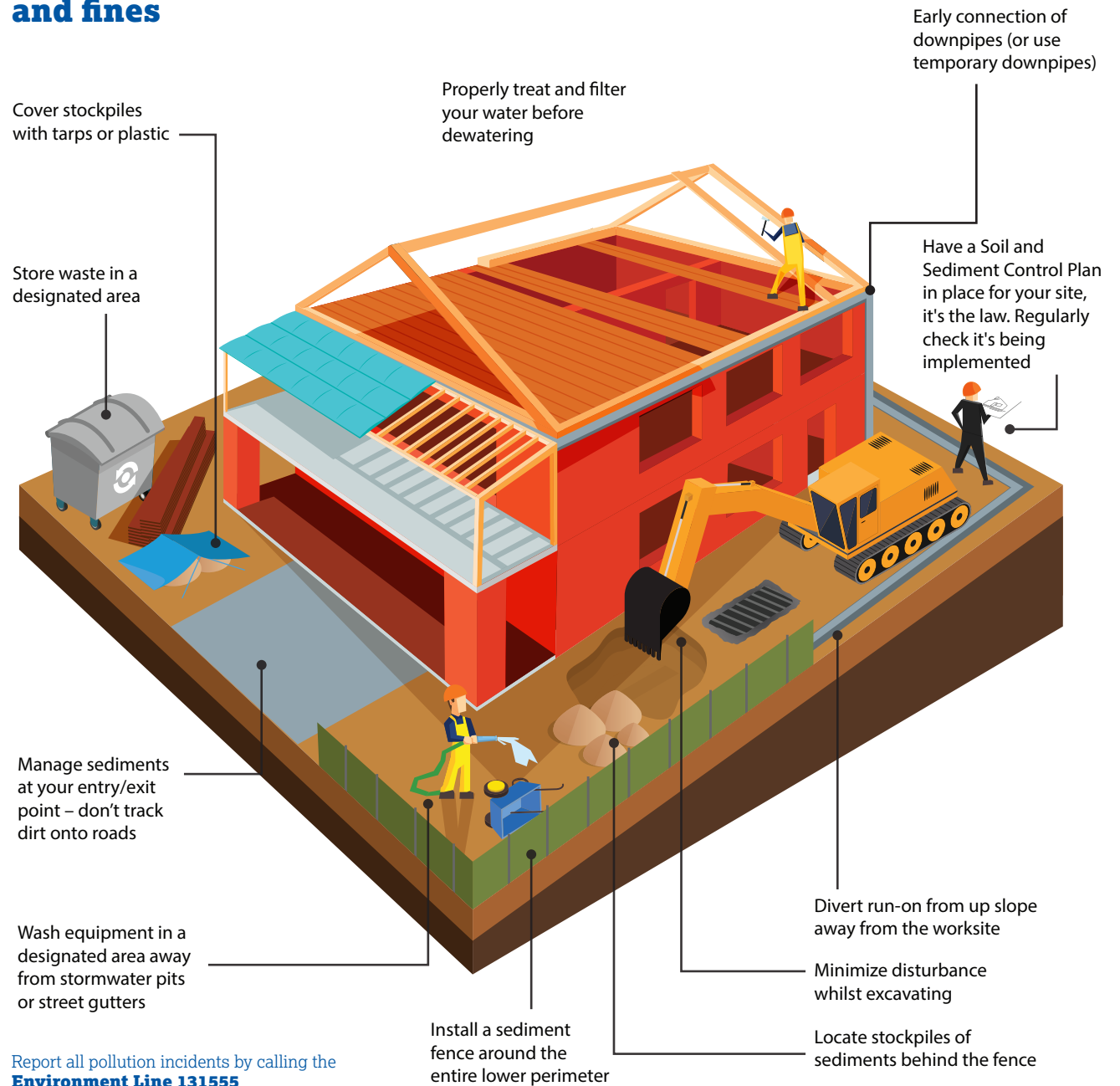
- Reduced clean-up costs
- Positive reputation for your company
- Reduced risk of site damage, re-work and lost time
- Reduced risk of fines
- Reduced chance of floods
- Healthier waterways and beaches = better fishing and leisure time for everyone

Did you know a single building block can lose up to 4 truckloads in one storm?

Inadequate erosion and sediment control practices can result in:

- Increased clean-up costs for your company
- Dust blowing affecting people with asthma and other respiratory problems
- Blocked stormwater pipes and water recycling systems which can lead to overflows, flooding around your site and safety risks and mosquito issues
- Beach pollution and damage to aquatic ecosystems and habitat

Easy steps to reduce stormwater pollution... and fines



Report all pollution incidents by calling the **Environment Line 131555**