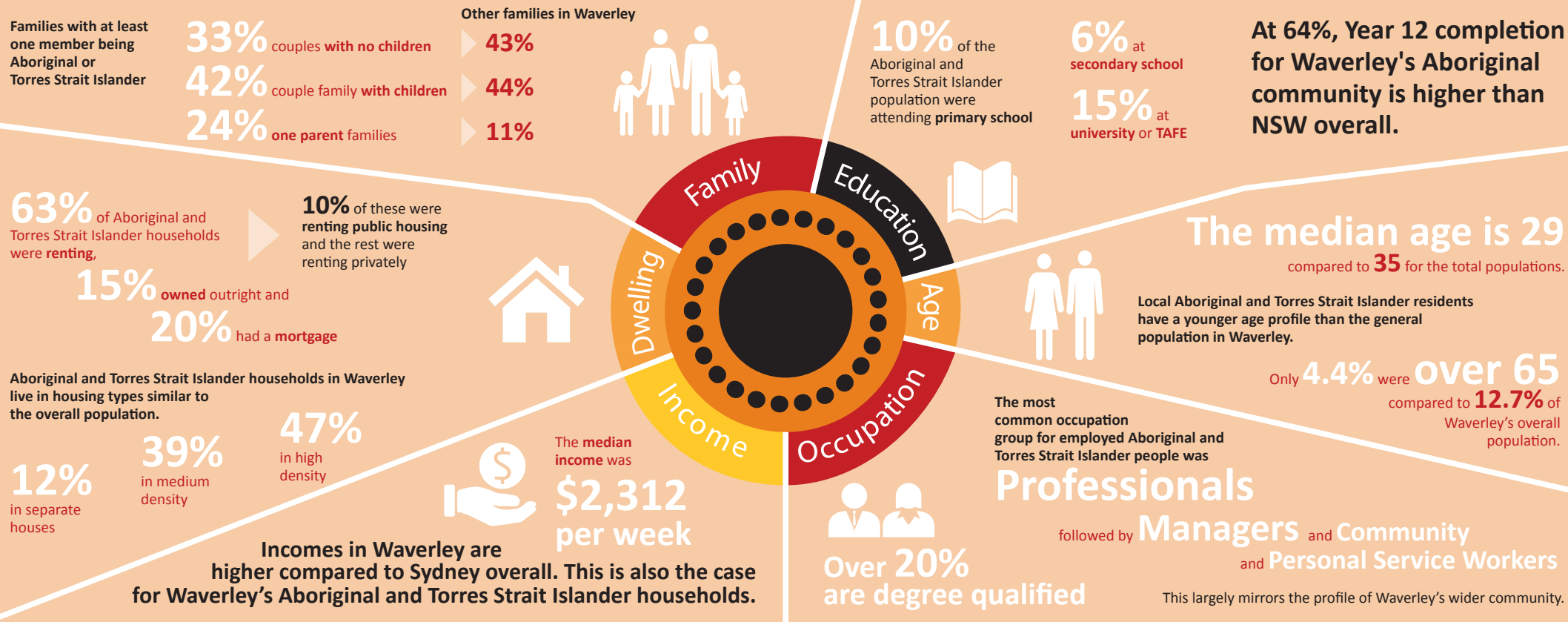


Waverley's Aboriginal and Torres Strait Islander Profile

In 2016, 274 Waverley residents (0.4%) identified as being Aboriginal or Torres Strait Islander.

Waverley Council acknowledges the Bidjigal and Gadigal people, who traditionally occupied the Sydney Coast and we acknowledge all Aboriginal and Torres Strait Islander Elders past, present and future.



Waverley values and supports the Aboriginal and Torres Strait Islander community through the following:

- Implementation of Waverley's Reconciliation Action Plan.
- Support of the Eastern Region Local Government Aboriginal and Torres Strait Islander Forum.
- Respecting and protecting Aboriginal and Torres Strait Islander culture and heritage.
- Celebrating culture and history through regular events, activities and education.
- Providing employment for Aboriginal and Torres Strait Islander people and opportunities for Aboriginal businesses



WAVERLEY
COUNCIL