



H.

Structures

H.01

Bus Shelter - Standard

Function

- Bus stop shelters provide weather protection to commuters
- JC Decaux bus shelters are the current standard for bus stops in Waverley. Under the current contract they have the capacity for advertising. Installation of new shelters is by mutual agreement. When the current contract is due for renewal a performance assessment should be carried out before entering a new contract.

Supplier

- JC Decaux
t. 02 9557 65
e. sydney@jcdecaux.com.au
w. www.jcdecaux.com.au

Product

- L 3900mm x W 1413 x H 2275mm metal and Perspex JC Decaux shelters
- Bus shelter with a double-sided, back illuminated advertising panel on one end designed by Norman Foster and developed by JCDecaux Design.

Installation

- Locate bus shelters behind the property line or set back from footpath is the preferred location. However, when there is inadequate space behind the property line, position bus shelters on the kerb
- Bus Stops are required to have warning and directional TGSIs installed in accordance with The Disability Standards for Accessible Public Transport and AS1428.4.1.
- Directional TGSIs are required to be installed across the direction of travel, extending 600-800mm
- A 600-800mm x 600-800mm pad of warning TGSIs, located 300mm from the kerb edge, indicates the location of the bus boarding point. This pad links to the directional TGSIs side of the footpath to provide a clear access path and optimal weather protection
- A minimum of 1200mm is required between the edges of the shelter end panels and the kerb for access to the shelter. Where the distance from the kerb to the property line is limited a rear entry shelter may be more suitable
- Provide sufficient circulation space within a bus shelter so that a wheelchair user can manoeuvre into an allocated space or to a boarding point
- Ensure adequate space is provided between the kerb and seat as well as a hardstand that is level and firm with a gradient no steeper than 1:40

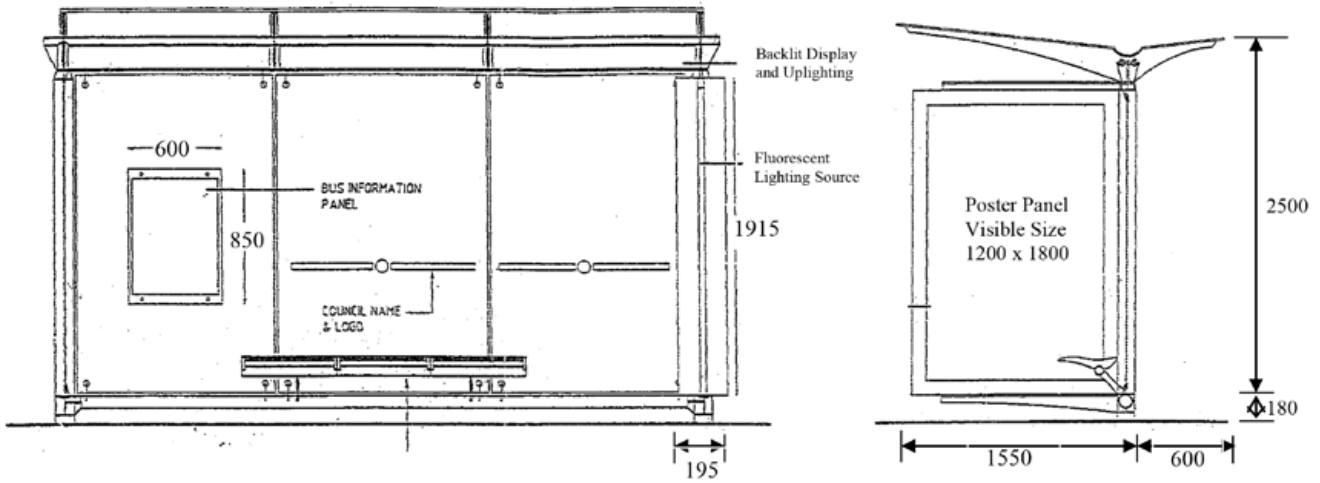
Maintenance

- As per manufacturer's details



JC Decaux bus stop shelter with advertising panel - Bondi beach

Structures Bus Shelter - Standard

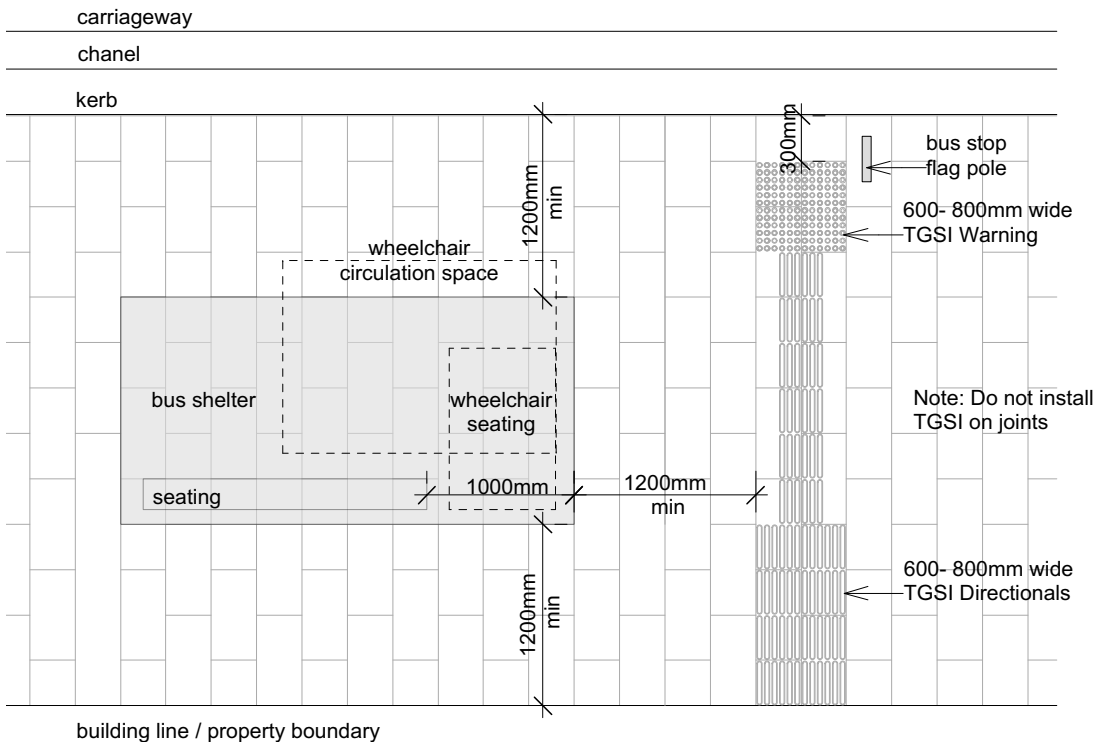


01 FRONT ELEVATION - SIZES VARY

not to scale

02 SIDE ELEVATION - SIZES VARY

not to scale



03 TYPICAL LAYOUT + TGSi LOCATION

not to scale

H.02

Bus Shelter - Heritage

Function

- Bus stop shelters provide weather protection to commuters
- Heritage bus stop shelters were created at many tram stops and are now very rare items of major heritage value. Waverley has erected several additional 'Heritage Style' bus shelters as a tribute to the Bondi trams.

Installation

- Bus Stops are required to have warning and directional TGSIs installed in accordance with The Disability Standards for Accessible Public Transport and AS14-28.4.1.
- Directional TGSIs are required to be installed across the direction of travel, extending 600-800mm
- A 600-800mm x 600-800mm pad of warning TGSIs, located 300mm from the kerb edge, indicates the location of the bus boarding point. This pad links to the directional TGSIs.

Maintenance

- Heritage bus stop shelters to be re-painted and touched-up with the following Dulux Selections Heritage exterior colours: www.dulux.com.au
- Indian red PM
- Egyptian red UD
- Teal B
- Cream W



'Heritage Style' bus stop shelter - bondi Road



Sydney Buses owned Heritage tram / bus stop shelter.
Locations - Bondi Road near Flood Street, Bronte Park Terminus, Macpherson Street, Bronte



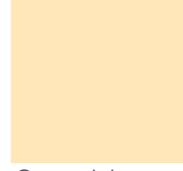
Indian red PM



Team B

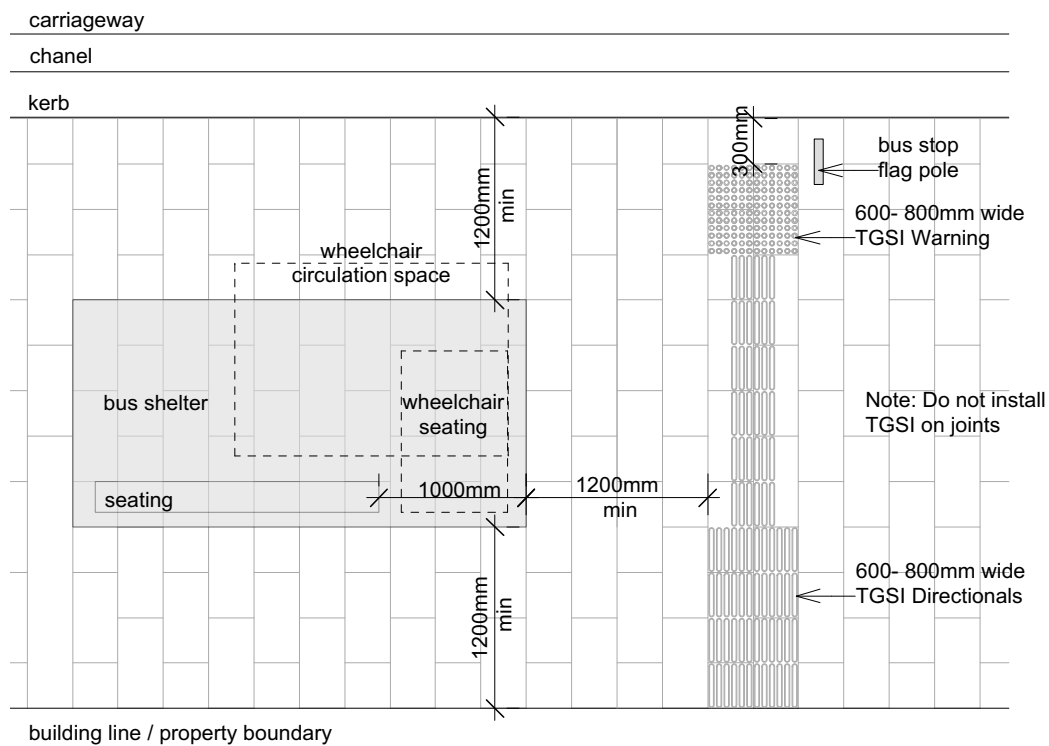


Egyptian red UD



Cream W

01 DULUX PAINT COLOUR PALETTE



02 TYPICAL LAYOUT + TGSi LOCATION

not to scale

H.03

Park Shelter

Function

- To be used in parks across the LGA - except in the following special places -
 - Bondi Park
 - Bronte park and
 - Tamarama Park

Supplier

- Contractor to nominate based on below specifications.

Materials and Dimensions

- Structure - Australian hardwood timber slats (AFS, FSC, PEFC or recycled).
- 8X6m Shelter with skillion roof - (Note: this can be varied for site conditions)
- Roof - Colorbond with 10 degree fall
- Base - Concrete pavement with sponge finish
- Size - Typically L 8000mm x W 6000mm H Various. Note: this can be varied for site conditions)

Installation

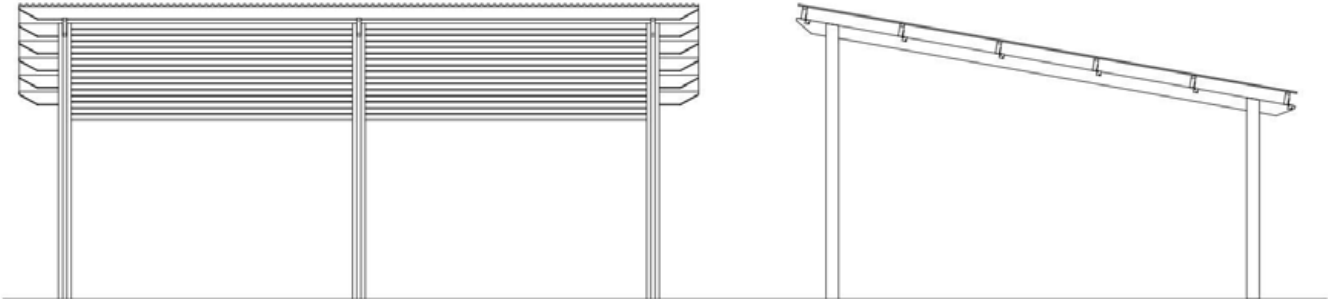
- 316 Stainless steel stirrups base plate at ground level with 24 x M16 Chem. Set anchors

Maintenance

- under review



Park Shelter Dickson Park



01 FRONT ELEVATION - SIZES VARY

not to scale

02 SIDE ELEVATION - SIZES VARY

not to scale

