

Waverley in FOCUS

Community Newsletter #56

Summer 2012

Waverley

Council



*Get reading
this summer
Page 3*



*New building
guidelines
Page 5*



*Mill Hill Early
Education
Centre opens
Page 6*



*Progress on the
environment
Page 8*

Your Waverley Councillors

Council Contacts

Customer Service Centre	9369 8000
Resource Recovery (Waste) Hotline	9369 8080
Waverley Library	9386 7777
Bondi Pavilion	8362 3400
Bondi Junction Town Centre Office	8305 8419
Bondi & Beaches	8362 3408
Waverley SES	9698 4477
Meals on Wheels & Shopping Service	9386 7977
Waverley Cemetery	9665 4938
Mill Hill Centre	9386 7999
School of Arts	9387 2461
Bronte Early Education Centre	9665 7998
Gardiner Early Education Centre	9387 1252
Waverley Early Education Centre	9386 9200
Mill Hill Early Education Centre	9386 7902
Family Day Care	9386 7785
Community & Seniors Centre	9386 7900
Bushcare	9386 7915
Environment Team	9369 8045

Waverley in Focus is published by Waverley Council. If you have any enquiries or comments about the publication please contact us.

Email
communications@waverley.nsw.gov.au

Post
PO Box 9, Bondi Junction 1355

Bondi Ward



Cr Joy Clayton
 (Liberal)
 PHONE 9130 8430
 MOBILE 0409 308 430
 EMAIL joyc@waverley.nsw.gov.au



Cr Dominic Wy Kanak
 (Greens)
 PHONE 9130 8460
 WORK 9369 8027
 EMAIL dominick@waverley.nsw.gov.au



Cr John Wakefield
 (Labor)
 MOBILE 0427 023 987
 EMAIL johnw@waverley.nsw.gov.au

Hunter Ward



Cr Sally Betts
 (Liberal) **Mayor**
 PHONE 9130 3250
 MOBILE 0425 363 530
 EMAIL sallyb@waverley.nsw.gov.au



Cr Leon Goltsman
 (Liberal)
 PHONE 8006 2799
 MOBILE 0424 379 079
 EMAIL leong@waverley.nsw.gov.au



Cr Miriam Guttman-Jones
 (Independent)
 PHONE 9371 1412
 EMAIL miriamgj@waverley.nsw.gov.au

Lawson Ward



Cr Angela Burrill
 (Liberal)
 PHONE 9114 8981
 EMAIL angela@waverley.nsw.gov.au



Cr Andrew Cusack
 (Liberal)
 PHONE 9114 8986
 EMAIL andrew@waverley.nsw.gov.au



Cr Paula Masseos
 (Labor)
 MOBILE 0419 292 207
 EMAIL paulam@waverley.nsw.gov.au

Waverley Ward



Cr Tony Kay
 (Liberal)
Deputy Mayor
 PHONE 9365 7707
 FAX 9365 7707
 EMAIL tonyk@waverley.nsw.gov.au



Cr Bill Mouroukas
 (Liberal)
 MOBILE 0421 341 815
 EMAIL billm@waverley.nsw.gov.au



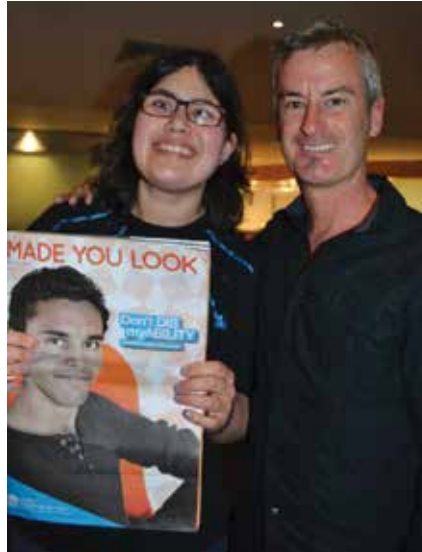
Cr Ingrid Strewé
 (Labor)
 PHONE 9389 7299
 FAX 9389 4639
 EMAIL ingrids@waverley.nsw.gov.au

A fine ambassador

The Waverley Community Living Program (WCLP) was established in 1984 and provides assistance to those in our community with a mild intellectual disability, to help them move towards more independent living.

One of WCLP's members, Jessica Tattersall, has been officially named as an 'Ambassador 2012' for International Day for People with Disability. This is a remarkable achievement and Jessica represents what is possible for people with a disability to achieve. Jessica is a great advocate for people with disabilities and attends forums for the NSW Council for Intellectual Disability.

Congratulations Jessica!



*Jessica and her case manager
Ian MacKinnon*

Great summer reading

For the past 11 years, Council's prestigious national literary award, 'The Nib', has attracted a fantastic selection of the best of Australian writing and excellence in research.

This year, the Library received nominations from 145 high profile and emerging writers, each vying for the main prize of \$20,000. Featuring a broad cross section of fiction and non fiction, the top six short-listed authors were:

- Robin de Crespigny – *The People Smuggler*
- Jane Gleeson-White – *Double Entry*
- Kate Grenville – *Sarah Thornhill*
- Adrian Hyland – *Kinglake-350*
- Fiona Harari – *A Tragedy in Two Acts*
- Danielle Wood – *Housewife Superstar: The very best of Marjorie Bligh*.

After much deliberation, the judges agreed that *Double Entry* by Jane Gleeson-White was this year's winner, a decision announced by MC Richard Glover at the award breakfast function at the Margaret Whitlam Recreation Centre on 28 November.

The judges said "a writer who can convince us that the accountant's main tool of trade, double entry bookkeeping, is both of compelling interest and an essential foundation of the modern world, has achieved something rare".

The complete Judges' Comments about this year's finalists, and winners from previous years, are on the Library's website, www.waverley.nsw.gov.au/nib

All of this year's books are on display at the Library, and available for loan.

Council has received generous support for this year's award from Friends of Waverley Library, and local bookshops Gertrude & Alice at Bondi Beach and Dymocks Bondi Junction.

*Mayor Cr
Sally Betts
and winner
Jane Gleeson-White.*



MAYOR'S MESSAGE



The start of the year is a great time to reflect back on the achievements of the previous year. Of course, my election as Mayor, and the election of my wonderful team, was the highlight of 2012 for me.

Council is always looking for ways to improve, to find new partnerships and deliver new services. To bring about these changes, we need new ideas and a fresh vision.

We have a lot to do in 2013, and community consultation will be at the core of all of our decisions.

In 2013 we will deliver a report with all the community feedback that we have received for the Bondi Plan of Management.

We received over 1,000 suggestions for the future of Bondi Beach, Bondi Park and Bondi Pavilion from the community across our online survey, community meetings and 'Have a Say Day'.

This was a wonderful result and I thank all of our residents who contributed with your ideas and incredible feedback.

I'm also delighted with the level of community interest and consultation that is taking place on the re-evaluation of Council's new strategic plan, Waverley Together 3.

It's really important that our residents have the opportunity to participate in decisions that affect their future.

This term I will be continuing to focus on our infrastructure needs. I am an advocate for light rail to Bondi. Over the coming months Council will investigate the feasibility of this in a bid to get cars off our roads and help our parking issues.

I look forward to continuing to work closely with the community and my fellow Councillors in the new year. Let's work together to ensure that 2013 will be a wonderful year for Waverley that we will look back on with a sense of great pride and achievement.

**Sally Betts
Mayor**

New Years Eve 2012

Spectacular harbour views

DUDLEY PAGE RESERVE DOVER HEIGHTS
31 DECEMBER 2012 6PM – 12.30AM

FREE JUMPING CASTLE,
 FACE PAINTING & PLAYGROUND
 DJ, MUSIC & DANCING
 LICENCED BAR & FOOD STALLS
 TOILETS
 WHEELCHAIR ACCESSIBLE
 NO BYO OR GLASS

Adult ticket \$30 (\$35 at gate)
 (includes 3 children up to 15 yrs).
 Concession tickets \$12 (\$15 at
 gate). Limited tickets available
 after 9pm. Purchase tickets online
 at moshtix.com.au or 1300 438 849
 (booking fees apply) or in person
 at Waverley Council Customer
 Service Centre, 55 Spring Street,
 Bondi Junction.
 For public transport
 info visit
131500.com.au



Bondi Pavilion THE CENTRE OF BONDI CULTURE

SPECIAL EVENTS

Seniors' Christmas Concert

Wednesday 19 December
 1.30–2.30pm, HighTide Room

Seniors in the local area are welcome to join us in the Hightide Room for this very special Christmas concert with Cassy and the Bossa Beats! There will be light refreshments, Christmas cake and a few yuletide tunes to add to the festivities. Call the Bondi Pavilion on 8362 3400 for more information and to book for this free event.

Please note: Monthly concerts begin again in March 2012.

Rockpool Discovery Tours

Wednesday 9 January 12–2pm
 Monday 14 January 4.30–6.30pm
 Monday 28 January 3–5pm
 Bondi Pavilion

Come and discover the fascinating marine creatures that inhabit the rockpools of our beautiful Bondi with the Marine Discovery Centre's marine biologist guides. Fun for young and old!

For more information
www.marinediscovery.org.au



Bondi Wave Music Course

The Bondi Wave music course is now open for applications. Open to local teenagers from 13-18 years the course runs over three months. Working with experienced tutors, participants learn about songwriting, arranging music, performance skills and working in a band. To apply for an audition or for more information, call the Music Programs Coordinator on 8362 3404.

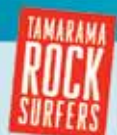


THEATRE

Upcoming Productions

Psycho Beach Party, 29 Nov–15 Dec
 Bison, February/March

More info www.rocksurfers.org or call 1300 241 167



GALLERY

Liminal: Six Women Artists
 11–30 December 10am–8pm daily

Amy Jean: Rainbow Nature
 8–19 January 10am–5pm daily

Auguste Blackman & Becky Guggisberg, Bucket and Spade
 21 January–3 February, 10am–5pm daily

Work In Progress Art Society 1–6 January



For more information call the Bondi Pavilion on 8362 3400 or visit www.waverley.nsw.gov.au

Construction excellence

Waverley Council recently won the NSW Master Builders Association (MBA) Excellence in Construction Award for sporting facilities to the value of \$50M, for the Margaret Whitlam Recreation Centre.

The MBA Excellence in Construction Awards are the commercial building industry's most prestigious awards, attracting entries from the state's largest commercial, industrial and civil contractors in a range of categories and price divisions.

This Award highlights the high standard of facility the Margaret Whitlam Recreation Centre offers the community.



It's hard to believe the festive season is once again upon us. It's a wonderful time to celebrate with our families and friends, relax and take stock of the year gone by.

This has been a great year for Council. We completed and opened two great community facilities – the Margaret Whitlam Recreation Centre and the Mill Hill Early Education Centre in Bondi Junction. We recently won the NSW Master Builders Association Excellence in Construction Award for the Recreation Centre. Council also won one of four Green Globe 10 Year Sustainability Achievement Awards. A number of projects contributed to Council winning this prestigious Award. More information about these awards and the great work we have been doing in our Environmental Services area can be found in the Environmental Action Plan update in the middle of this edition.

Council elections were held in September, resulting in four new Waverley Councillors. Angela Burrill, Andrew Cusack and Paula Masselos are to represent Lawson Ward and Bill Mouroukas joins Waverley Ward. I'd like to extend my best wishes to outgoing Councillors Kerry Sloan, Rose Jackson, Mora Main and Prue Cancian. We appreciate all their hard work and service to the Waverley community.

Congratulations to Sally Betts, who was elected Waverley Mayor for the fourth time, and Tony Kay, who was voted in as Deputy Mayor. I'd like to thank outgoing Mayor John Wakefield for his initiatives and good work. It's been a pleasure working with John in his role as Mayor over the last year.

I wish you all the very best this festive season. As the weather warms up and our beaches get busier, make sure you stay safe in the water and out. Relax, re-energise and enjoy the many great activities we are running this summer.

Tony Reed
General Manager

New Local Environmental Plan

Waverley Council has welcomed the gazettal of the new Waverley Local Environmental Plan 2012 (LEP) by the NSW State Government.

The gazettal, which came into effect on Friday 26 October 2012, means Council will now assess development applications against the new controls set out in the LEP. The LEP covers a range of issues including land use, height of buildings, floor space ratio, heritage, minimum lot sizes

and other local provisions for land within the Waverley Local Government Area (LGA).

The LEP will be supported by Waverley Council's new Waverley Development Control Plan 2012 (DCP), which was adopted by Council and came into effect on the same day. This document provides detailed guidelines for development.

The LEP and DCP are the primary documents Council uses to assess both commercial and residential development applications.

■ For more information about the new LEP and DCP, please visit www.waverley.nsw.gov.au/building_and_development or contact George Bramis, Divisional Manager Strategic Land Use Planning on 9369 8050.



Free WiFi on Bondi Beach

Residents can now access free WiFi on Bondi Beach. Council has signed a free two-year WiFi trial with Universal Network.

The WiFi coverage, which was activated late November, reaches from Bondi Beach and into Bondi Park, making life easier for both residents on the go and visitors. So the next time you're on the beach or in the park and need to send an email or google something, you can do so for free.





Hannah goes bush

Hannah Scully has been working at Council's Bronte Early Education Centre for two and a half years as an Early Childhood Educator. Hannah recently made the decision to take her skills as an early childhood educator, to a very remote community in the Northern Territory, approximately four hours out of Alice Springs. So far Hannah has been there for six weeks and plans to be there for at least a year.

Hannah is the new Team Leader of Children's Services in her community. Her role is to care for and educate children from birth to five years of age, as well as mentor indigenous educators, empowering them as educational leaders. She works alongside other agencies and programs to provide quality care for underprivileged children.

"It has been important for me to work on establishing relationships with members of the community.

To facilitate this I often go and sit in the dirt at sunset to 'talk stories' with the women and to learn some of the local language. It is a special time where we can share our knowledge and insights.

"A continuing challenge is to instil the importance of early childhood education and I am endeavouring to do this in collaboration with my staff, by creating a safe and culturally significant space for families to come together and discuss early childhood issues, while also involving them in the ongoing program", Hannah told Council recently.

Early childhood education is really important for all children in Australia. Having the opportunity to mentor indigenous women and work with children in such a remote community is an amazing experience. Hannah's colleagues at Bronte Early Education Centre are extremely proud and know she will make a difference to the lives of many women and children.

You can follow Hannah's journey at: www.brontetobush.blogspot.com.au



Doors open at Mill Hill

The new Mill Hill Early Education Centre in Bondi Junction proudly opened its doors to the Waverley community in late October.

The purpose-built 52-place Centre in the heart of the Junction offers affordable child care to working families. With the assistance of \$1.65 million Federal funding from the Department of Education, Employment and Workplace Relations (DEEWR), Council has been able to make the Centre a reality.

Mayor of Waverley, Sally Betts visited the Centre to welcome children on their first day and said that the Centre is a great addition to our community in Waverley.

"This Centre offers a much-needed affordable child care option to working families," Mayor Betts said.

"With hundreds of families on our child care waiting lists it is very exciting to welcome the Mill Hill Early Education Centre to Bondi Junction."

The facility offers 52 long day care places, including up to 16 places for 0-2 year olds.

Additional office and meeting rooms will accommodate complementary early childhood services to provide a one-stop-shop for local families.

Bondi Eye keeps you informed

If you're a resident in the Bondi Beach area and want to keep up-to-date with things that will affect you, head to our Bondi Eye blog and subscribe to the RSS feed.

Bondi Eye keeps local residents in the loop with maintenance works, traffic changes, road closures and other area specific issues.

Visit bondiye.com and subscribe to the RSS feed today.



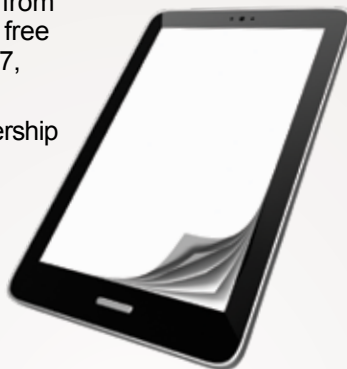
Books, e-books and audio books free from your Library!

Don't be stuck for holiday reading this summer ... After you've dropped the kids off at one of our great holiday activities, head in to the library and check out our fiction, romance, travel, crime, suspense and classics titles.

If you're hoping for an e-reader or tablet device from Santa, then don't forget you can also download free e-books from our Waverley Library website, 24/7, from the comfort of your own home.

All you need is a current Waverley Library membership card, internet access and a compatible computer, laptop, e-reader or mobile phone.

■ Visit www.waverley.nsw.gov.au/library for more information and to see if your device is compatible with our free audio and e-book download system.



Lily Brett @ your library

Internationally acclaimed essayist, poet and novelist Lily Brett spoke to a full house at Waverley Library in October. Lily chatted with Sydney bookseller Scott Whitmont about her latest novel, *Lola Bensky*.

Mirroring Brett's own early years as a journalist for an Australian music magazine, the novel is a funny and moving story of Lola, a 19-year-old Australian rock journalist who interviews Jimi Hendrix, Mick Jagger and other now-legendary musicians.

After a reading from the novel Lily Brett chatted to Scott about her writing and early years. Her books sold like hotcakes and the crowd had a great morning. This highly successful event was a joint initiative between Waverley Library and Encounters@Shalom.

Lola Bensky and other Lily Brett titles are available now from Waverley Library.



Don't miss out! [Click here to subscribe to our regular](#) 

What's on Library newsletter

Are you 'in the know'?

Do you want to be one of the first to hear about Waverley Library's author talks, workshops, holiday programs and special events?

Join our email subscription list. 

You can do this online at www.waverley.nsw.gov.au/library – simply click on the home page web banner, give us your email details and receive a short and sweet e-newsletter once every two months.



Waverley Library Photographic Competition Exhibition

We got the best shot!

The 2012 competition entries showed a variety of imaginative responses to Waverley's people, places and architecture.

Congratulations to Jodie Taylor who took the winning photo – 'The Bathing Beauty of Bronte'.

View the show in the Library foyer from 10 December 2012 to 13 January 2013.

How are we tracking environmentally?

Waverley Council recently took stock of how we are progressing towards meeting our environmental targets in the areas of climate change, water, waste and biodiversity, as well as our work in education and research.

We are proud of the achievements made across Council operations and within the wider community to date. However we recognise the long journey ahead to reach our medium and long-term goals. This is top of mind as we now revise our current plan and develop new and innovative strategies in Council's next Environmental Action Plan.

Highlights

OVERALL

- Green Globe Award Winner 2012 – 10 Year Sustainability Achievement Award

REDUCING OUR CARBON FOOTPRINT

- Council has cut greenhouse gas emissions by 6% since the 2003/04 base year (target: 30% reduction on base year by 2020)
- Further reductions (15%) anticipated from energy-saving retrofit projects underway at major sites. These include Waverley Library, Bondi Pavilion, Council Chambers, Eastgate Carpark and seven others
- We are growing our renewable energy portfolio with four solar power systems now installed on Council buildings with a total 31kW generation capacity
- Bondi Junction Greenhouse Gas Review (2011) has identified significant opportunities for greenhouse gas reductions in this important commercial/retail hub using low carbon technologies and energy efficient design
- Installed solar power capacity across Waverley tripled from September 2010 to December 2011, significantly increasing the amount of renewable energy produced in the community



SUSTAINABLE TRANSPORT

- 61 car share spaces are now available for residents and businesses
- Green Links walking routes link key recreational facilities and transport nodes
- New bike and scooter racks now installed in five local schools as part of Council's commitment to encourage sustainable and active travel



WASTE REDUCTION AND RESOURCE RECOVERY

- Overall amount of waste collected from residents and public space cleansing has decreased
- 36% of residential and public place waste is currently recycled, and 21% for commercial
- Council continues to provide recycling services for electronic waste, batteries, mobile phones, and other hazardous wastes
- Nearly 800 residents now actively participate in our Compost Revolution program

Every year Council runs a range of programs to help the community become more environmentally sustainable.
For monthly email updates, call 9369 8045 or email environment@waverley.nsw.gov.au



WATER USE AND QUALITY

- We are on track to meet our LGA water use target (zero increase in 2005/06 levels for mains water consumption by 2020)
- The Eastern Suburbs Sustainable Business Program, in partnership with Sydney Water, Woollahra and Randwick Councils, has delivered 1777 kL of water savings for businesses each year
- Bronte and Bondi Park Stormwater reuse systems provide a combined 66 ML/year of recycled water for irrigation, toilet flushing and other services
- Water quality has improved at both Bronte and Bondi beaches
- Waverley Park stormwater reuse system will provide 45 ML/year of recycled water for irrigation and toilet flushing
- Rainwater tanks are installed at various sites



CONSERVING BIODIVERSITY

- Remnant vegetation and habitat corridors now mapped and included in planning policies along with controls to protect them
- Upper Bronte Gully Creek restoration project was opened in 2011

- Regeneration and rehabilitation works continue to be supported by the generous time and effort of 56 Bushcare volunteers as well as contractors
- Over 6,000 native trees were planted in 2011/12 across the area by community members, Council staff and contractors



RESEARCH AND EDUCATION

- Council environmental events and educational workshops attracted over 4,200 participants last year
- 17 schools and 199 educators and parents participate in the Eastern Suburbs Sustainable Schools Network, sharing ideas and resources
- A total of \$12,000 of Council Environment Grants awarded to community groups and schools for sustainability projects each year

NEXT STEPS

The Draft Environmental Action Plan 3 will be on exhibition for comment in early 2013. We look forward to your feedback.

MORE INFORMATION

- The full Environmental Action Plan 2 Progress Report is available online at www.waverley.nsw.gov.au.
- Contact our Environmental Services Team: environment@waverley.nsw.gov.au, 9369 8000



It's that time of the year again – get ready for the summer school holidays with Summerama!

Waverley Council has lined up a great program of free activities for kids and families over January, as part of the wider regional program organised by the Sydney Coastal Council Group.

The 2012–13 program includes a series of activities, all of which are free to attend, that focus on learning about, interacting with and experiencing the coastal environment in the Waverley community, as well as how to stay safe in and around the beach.

Spaces are limited for many of these sessions, so bookings are essential. Please visit www.waverley.nsw.gov.au/summerama for more information.

2013 Summerama Program

Rockpool Discovery Tours Bondi Pavilion

- Wed 9 January, 12–2pm
- Mon 14 January, 4.30–6.30pm
- Mon 28 January, 3–5pm

Marine Eco Sculptures Bondi Pavilion

- Fri 11 January, 10am–12noon
- Fri 18 January, 10am–12noon
- Fri 25 January, 10am–12noon

Coastal Bush Tucker & Indigenous History Walk Bondi to Tamarama Coast Walk

- Sat 12 January, 10am–12noon
- Mon 21 January, 1–3pm

Beaches @ Risk Bronte Surf Life Saving Club

- Thurs 17 January, 6.30–9.30pm

Dr Rip: Science of the Surf Tamarama Surf Life Saving Club

- Sat 19 January, 11am–1pm

Waverley wins Green Globe Award 2012

At a special presentation at State Parliament, Minister for the Environment, Robyn Parker, presented Waverley Council with the Green Globe 10 Year Sustainability Achievement Award for Council's excellence in advancing environmentally sustainable practices.

The Green Globe Awards are seen as the ultimate accolade, and are the NSW State Government's recognition of business, government and not-for-profit sectors' efforts to improve our environment and create a more sustainable planet to live in.

Waverley Council won its category for a number of sustainability projects underway across the LGA including Bronte and Bondi stormwater harvesting, Waverley Park Groundwater Harvesting and Re-use System, the Compost Revolution program, the installation and retrofit of cost-effective energy saving technologies across Council premises, cycling and green links paths, and its commitment to pursuing environmentally friendly practices.

GREEN GLOBE
Winner 2012



Ride2Work Day 2012

Riding a bike is a healthy and sustainable way to get to work, so Waverley Council invited local residents to celebrate cycling to work on National Ride to Work Day.

Bike riders were offered a free breakfast of fruit and croissants in Oxford St Mall and an on-the-spot bike check-up by mechanics from a local bike shop to make sure people's bikes were safe.

Local bicycle user group BIKEast also brought 16 riders in a bike bus from Bondi Beach to the breakfast and then on to the City. Bike buses offer people a supportive way to try out riding a bike to work in a group with experienced riders. People can join the group from designated stops along the route.

For more information visit www.bikeast.org.au

The event is a great way to encourage people to think about riding to work and to get into the community spirit.

No time to waste!

Waverley Council is committed to diverting 75% of the LGA's domestic waste from landfill by 2020, and we need YOUR HELP.

Have your say about rubbish and recycling in our five-minute survey!

There are two ways you can participate:

- Visit haveyoursaywaverley.com.au/waste and fill the survey in online
- Grab a hard copy at the Waverley Library or at the Customer Service Centre.

Simply complete the survey and you can go in the running to win a double pass for the Tamarama Rock Surfers 2013 season or a \$100 Westfield Bondi Junction shopping voucher.

The survey is open until 31 January 2013.

- For more information, please visit www.waverley.nsw.gov.au/wastesurvey or contact Suji Jadhav, Waste & Recycling Education Officer, via email sujij@waverley.nsw.gov.au



Want a sweeter smelling bin this summer?

Keep food scraps out of your red lid bin by composting or wormfarming this summer. Get a free compost bin or wormfarm from Council's 'Compost Revolution' Program.

Enjoy Council's free workshop and online tutorial to brush up on your composting and wormfarming skills.

It's easy to use compost bins and wormfarms and they don't smell. Composting is perfect for houses and can stop your garden wilting this summer by giving you lush healthy soil. Wormfarms are great for apartments, on balconies and even indoors, so they really are for everyone.

■ Order your free compost bin or wormfarm today.

Go to www.compostrevolution.com.au, do the tutorial and take the quiz. Waverley residents can even have them delivered for free.

■ Want to go to a workshop on composting or wormfarming? Book at www.cityeastcc.com.au or call City East Community College on 9387 7400.

Be part of the **Compost Revolution**



The fifth edition of the Eating Out Guide is now available online. Search by location, cuisine or whatever you fancy. Visit www.bondieatingout.com.au today!

A pawfect place to play

Waverley Council is helping the community to ensure our four-legged friends have more off-leash areas in which to play and exercise in Waverley.

Following demand from the community, Council is now trialling three parks with new off-leash areas – Hugh Bamford Reserve, Dickson Park and Waverley Park.

The signage has been designed and created by artist Emma Anna. These new areas are clearly marked with bright, educational signage and paw print artwork, so both dog and owner will be clear where to play when the signs are installed later this month.

These off-leash areas have been provided in addition to existing dog play areas in Varna Park, Waverley, Raleigh Reserve, Dover Heights, and Diamond Bay Reserve, Vaucluse.

Further consultation is currently underway to see if the community would also like to see off-leash areas in Marks Park and Bronte Park Gully.

Council reminds dog owners to be respectful and considerate of other park visitors, to pick up after their dog and to ensure their pet is under control at all times.

To have your say on the proposed changes to dog walking, please fill in an online survey by visiting www.waverley.nsw.gov.au



Bondi Beach, Park and Pavilion Plan of Management

Council is currently running a community consultation on the Bondi Beach, Park and Pavilion Plan of Management. The Plan will guide how we manage and protect these invaluable sites now and for future generations.

Council asked the community to have their say through an online survey. So far Council has received over 1000 survey responses highlighting how passionate the community is about the area. The survey doesn't close until the 14th of December 2012, so please fill it in online by visiting our website www.waverley.nsw.gov.au.

On Saturday 17 November, Council held a 'Have a Say Day in the Park', giving people the opportunity to comment on materials on display in the park. We had a great response from the community and thank those who came down to Bondi Park to get involved.

We are in the process of collating all the feedback we have received to date and will come back to you in the new year with the outcomes and a draft plan.

For more information about the plan visit www.waverley.nsw.gov.au/bondipom



Annual Report 2011–2012

Waverley Council's Annual Report 2011 – 2012, which covers the period 1 July 2011 to 30 June 2012, is now publicly available.



The Report has been prepared in accordance with Section 428 of the Local Government Act 1993 and provides a summary of Council's activities and progress in implementing its Delivery Program and Operational Plan over the last financial year.

Copies of the Annual Report 2011–2012 can be viewed at Council's Customer Service Centre or Waverley Public Library. Copies can also be viewed or downloaded from Council's website: www.waverley.nsw.gov.au

Let's secure the future of Waverley together

Waverley Together 2 is the community's long term plan and vision for our area. Waverley Council has been working with the community towards this vision and we've been making some great progress.

It's time to revise the plan and we need **your help!** Council is consulting with the community about how we can best deliver services. We want to hear what you think.

We would like your feedback on a number of online forums between November 2012 and February 2013.

Help us develop *Waverley Together 3*, your long term community plan.

Your feedback is valued and appreciated.

Visit www.haveyoursaywaverley.com.au to join the conversation and keep up to date with consultation opportunities.





Seniors staying active

Table tennis anyone?

Table tennis is the latest recreational activity available at the Margaret Whitlam Recreation Centre in Waverley Park.

The Centre has recently purchased five competition standard table tennis tables, plus nets, bats and balls.

First to benefit from the new equipment are the seniors of Waverley. Twice-weekly table tennis sessions for seniors are now being held on Tuesdays and Fridays from 11am to 1pm in the sports court. The

sessions are open to all seniors, no prior experience of the sport is necessary and there is no need to book in advance.

Table tennis is great for all ages and has many benefits for seniors. It improves hand-eye coordination, requires mental alertness and is a fun way to keep fit and socialise with friends.

The cost is only \$3 per person per session, payable on the day. The Centre can supply bats and balls as needed.

■ For more information about using the facilities at the Centre please go to www.waverley.nsw.gov.au/recreationcentre or contact 9389 5010.



Supporting independence

Seniors in our community participated in a booster session for the 'Stepping On' program on 14 November at the Senior's Centre in Bondi Junction.

'Stepping On' is an exciting and friendly community group program for seniors who are aged 65 years and over. It is designed to build knowledge, strength and confidence to help seniors remain independent at home.

The program is run in a group setting with individualised follow-up. It covers a range of issues, including falls and risk, strength

and balance exercises, home hazards, safe footwear, vision and falls, safety in public places, community mobility, coping after a fall and understanding how to initiate a medication review.

Sessions are based around ways to empower participants and guide them towards more independent living, with a focus on those who are fearful of falling or who have recently fallen.

■ Please telephone 9386 7900 and register if you are interested in taking part in the program that will start in February 2013.

Waverley Council's

Summer HOLIDAY PROGRAM

January 2013

Bondi Pavilion

Create music, films and animation. Be a clown, dance, act and sing. Become a DJ, make a rock garden or launch a rocket!

Waverley Library

Create a puppet, become a budding Master Chef or visit Alice in Wonderland!

Margaret Whitlam Recreation Centre

Come and play Soccer, Netball, Basketball, Cricket, T-Ball and OZTAG!

Summerama

Discover our rockpools, take a cool coastal walk or create your own marine sculpture!

Scan here for program

over 150 fabulous holiday activities for all ages.

For more summer holiday events and activities visit www.waverley.nsw.gov.au/holidayprograms

Sand, Scrub and Wildflowers: Waverley then

Waverley today, with its paved streets and densely occupied suburbs, bears little resemblance to its bushland past. Scrub and extensive sand dunes used to dominate the area and it was covered with a wide variety of plant species.



Plants that grew locally:

Red Bottlebrush
Coast Teatree
Broadleaved Paperbark
Tree Broom-Heath
Christmas Bush
Pineleaf Geebung
Swamp Lily
Moreton Bay Fig Trees
Climbing Guinea flower
Coastal Correa
Wedding Bush
Pink Waxflower
Button Grass
Silky Purple-flag
Red Five-Corners
Green Five-Corners
Native Quince
Varieties of Wattle & Banksia

What did Waverley look like in the early days of European settlement? Here are some descriptions:

'In the 1850s that portion of Waverley known as Charing Cross was practically virgin scrub. The journey between Charing Cross and Tea Gardens (now Bondi Junction) was like passing along a country road until the next village was reached.'

The locality from Mill Hill to the Tea Gardens was described as 'little else than tea-tree scrub.'

A delightful description of Tamarama Gully notes:

'A rustic bridge spanned the stream in Tamarama Gully which rippled its journey through the ferns to an outlet in the southern side of the beach, wherein nasturtium seeds, carried down by the stream, would lodge,

germinate and blossom into a field of varicoloured flowers, impregnating the air with their perfume.'

Diamond Bay and Old South Head Road:

'The surrounding country was chiefly vacant land in its virgin state, composed of scrub-covered sandstone, with soil interspersed. A shallow water table led into a culvert and emptied into a natural watercourse on his land.'

And if you looked across Bondi Beach you would have seen:

'At Bondi long sweeps of beach and nothing behind but gums and stunted brush, with a stream meandering through fern gullies and palm groves to a blue lagoon just behind the sand. The wooded land belonged to Francis O'Brien, one of Waverley's first Councillors.'

For more information on our fascinating local history see the Local Studies website on Council's website, www.waverley.nsw.gov.au, or email Kimberly O'Sullivan, Local Studies Librarian, kimberlyo@waverley.nsw.gov.au.

ENGLISH

The Council election was held in September 2012, resulting in four new Waverley Councillors. We welcome Councillors Angela Burrill, Andrew Cusack and Paula Masselos, who represent Lawson Ward and Bill Mouroukas who joins Waverley Ward. The new Councillors join returning Councillors Sally Betts, Tony Kay, Dominic Wy Kanak, Joy Clayton, John Wakefield, Leon Goltsman, Miriam Guttman-Jones and Ingrid Strewe. Cr Sally Betts was elected Waverley Mayor, serving her fourth term as Mayor. Cr Tony Kay was voted in as Deputy Mayor.

Waverley Council's Annual Report 2011–2012, which covers the period 1 July 2011 to 30 June 2012, is now publicly available. Copies of the Report can be viewed at Council's Customer Service Centre, Waverley Library or downloaded from Council's website: www.waverley.nsw.gov.au

Waverley Council now has a consultation website. Visit www.haveyoursaywaverley.com.au today to join the conversation about current issues and consultations. Your feedback is important to us.

Are you interested in what's happening in your area and want to have your say? Why not get involved with your local precinct committee? To find your precinct and meeting times, call 9386 7924.

Call Waverley Council on 9369 8000, visit www.waverley.nsw.gov.au or ring TIS on 131 450 to connect you with us.

SPANISH

Las elecciones del Municipio se llevaron a cabo en septiembre de 2012 y resultaron en la elección de cuatro nuevos concejales para Waverley. Le damos la bienvenida a Angela Burrill, Andrew Cusack y Paula Masselos, quienes representan a la Sub-división de Lawson, y a Bill Mouroukas, quien se une a la Subdivisión de Waverley. Los nuevos concejales se unen a los concejales responsables del escrutinio Sally Betts, Tony Kay, Dominic Wy Kanak, Joy Clayton, John Wakefield, Leon Goltsman, Miriam Guttman-Jones e Ingrid Strewe. La concejal Sally Betts fue elegida como Intendente del Municipio y cumplirá su cuarto período como Intendente. El concejal Tony Kay fue votado como Intendente Adjunto.

El *Informe anual 2011 – 2012* del Municipio de Waverley, que cubre el período que va del 1° de julio de 2011 al 30 de junio de 2012, ahora se encuentra disponible para el público. Las copias del *Informe* se pueden ver en el Centro de servicios al cliente del Municipio, Biblioteca de Waverley, o se pueden descargar del sitio del Municipio: www.waverley.nsw.gov.au

El Municipio de Waverley ahora cuenta con un centro de consultas. Visite www.haveyoursaywaverley.com.au hoy y únase a la conversación acerca de los temas y consultas actuales. Su opinión es importante para nosotros.

¿Está interesado/a en lo que está pasando en su área y quiere expresar su opinión? ¿Por qué no participa en su comité del precinto local? Llame al 9386 7924 para encontrar su precinto local y horarios de reuniones.

Comuníquese con el Municipio de Waverley llamando al 9369 8000, visite www.waverley.nsw.gov.au o llame al Servicio de interpretación y traducción (TIS) al 131 450 para ponerse en contacto con nosotros.

HUNGARIAN

A tanácsválasztás 2012 szeptemberében volt. A Waverley tanácsnak négy új tagja van. Köszöntjük Angela Burrill, Andrew Cusack és Paula Masselos tanácsstagokat, akik a Lawson körzetet képviselik valamint Bill Mouroukas tanácsstagot, aki a Waverley körzet új képviselője. Az új tanácsstagok csatlakoznak Sally Betts, Tony Kay, Dominic Wy Kanak, Joy Clayton, John Wakefield, Leon Goltsman, Miriam Guttman-Jones és Ingrid Strewe újraválasztott tanácsstagokhoz. Sally Betts tanácsstagot választották meg negyedszerre Waverley polgármesterének. Tony Kay tanácsstagot választották meg alpolgármesternek.

A Waverley tanács 2011-2012-es évi beszámolója, amely a 2011 július 1.-től 2012 június 30.-ig tartó időszakra vonatkozik, elérhető most a nyilvánosság számára. A beszámoló megtekinthető a tanács ügyfélszolgálati központjában, a Waverley könyvtárban valamint letölthető a tanács honlapjáról: www.waverley.nsw.gov.au

A Waverley tanácsnak van egy tanácskérési lapja. Keresse fel a www.haveyoursaywaverley.com.au címet ma és kapcsolódjon be ma az aktuális ügyekre vonatkozó társalgásba és tanácskérésbe. Az ön visszajelzése fontos számunkra.

Érdeklí önt, hogy mi történik az ön környékén és hozzá akar-e ehhez szólni? Mért ne vegyen részt a helyi körzeti bizottság munkájában? Hogy megtudja, hogy melyik az ön közege és hogy mikor van gyűlés hívja a 9386 7924-es számot.

Hívja a Waverley tanácsot a 9369 8000-ás számon, keresse fel a www.waverley.nsw.gov.au címet vagy hívja a telefon tolmács szolgálatot, hogy kapcsolják össze velünk.

GREEK

Οι Δημοτικές Εκλογές πραγματοποιήθηκαν το Σεπτέμβριο του 2012 και συντέλεσαν στην είσοδο τεσσάρων νέων Δημοτικών Συμβούλων στο Waverley. Καλωσορίζουμε την Angela Burrill, τον Andrew Cusack και την Paula Masselos, που εκπροσωπούν την Εκλογική Περιφέρεια του Lawson και τον Bill Mouroukas από την Εκλογική Περιφέρεια Waverley. Οι νέοι Σύμβουλοι θα συνεργαστούν με τους επανεκλεγέντες Sally Betts, Tony Kay, Dominic Wy Kanak, Joy Clayton, John Wakefield, Leon Goltsman, Miriam Guttman-Jones και Ingrid Strewe. Η Cr Sally Betts εξελέγη Δήμαρχος του Waverley, το οποίο θα υπηρετήσει ως Δήμαρχος για τέταρτη φορά. Αντιδήμαρχος εξελέγη ο Cr Tony Kay.

Η *Ετήσια Έκθεση Πραγμάτων [Annual Report] 2011 – 2012* του Δήμου του Waverley, η οποία καλύπτει την περίοδο 1 Ιουλίου 2011 έως 30 Ιουνίου 2012, βρίσκεται τώρα στη διάθεση του κοινού. Αντίτυπα της Έκθεσης μπορεί κάποιος να δει στο Κέντρο Εξυπηρέτησης Πελατών [Customer Service Centre] του Δήμου, στη Δημοτική Βιβλιοθήκη του Waverley ή να κατεβάσει από το διαδικτυακό τόπο του Δήμου: www.waverley.nsw.gov.au

Ο Δήμος του Waverley διαθέτει τώρα ένα συμβουλευτικό κόμβο. Επισκεφτείτε σήμερα το www.haveyoursaywaverley.com.au για να συμμετάσχετε στη συζήτηση για τρέχοντα θέματα και συμβουλές. Οι απόψεις σας είναι σημαντικές για μας.

Ενδιαφέρεστε για όσα συμβαίνουν στην περιοχή σας και θέλετε να εκφράσετε τη γνώμη σας; Γιατί δε συμμετέχετε στην τοπική επιτροπή της περιοχής σας; Για να μάθετε τις ώρες συναντήσεων της επιτροπής της περιοχής σας, καλέστε το 9386 7924.

Καλέστε το Δήμο του Waverley στο 9369 8000, επισκεφτείτε το www.waverley.nsw.gov.au ή καλέστε τη Υπηρεσία Μετάφρασης και Διερμηνείας (TIS) στο 131 450 να σας συνδέσει μαζί μας.

SIMPLIFIED CHINESE

市议会选举已于 2012 年 9 月举行，选举结果产生了四名新的韦弗利市议员。热烈欢迎代表 Lawson 选区的 Angela Burrill、Andrew Cusack 与 Paula Masselos 以及代表韦弗利选区的 Bill Mouroukas 加入我们。除了新议员外，Sally Betts、Tony Kay、Dominic Wy Kanak、Joy Clayton、John Wakefield、Leon Goltsman、Miriam Guttman-Jones 与 Ingrid Strewe 等上届议员本届仍将留任。Sally Betts 议员当选韦弗利市市长，任期四年。Tony Kay 议员当选副市长。

韦弗利市议会《2011-2012 年度述职报告》现已面向公众发行，覆盖时期为 2011 年 7 月 1 日至 2012 年 6 月 30 日。市民可前往市议会客服中心、韦弗利图书馆阅览《报告》副本，也可登录市议会网站下载: www.waverley.nsw.gov.au

韦弗利市议会现设立了一个咨询中心。请立即访问 www.haveyoursaywaverley.com.au，加入关于当前所面临的问题与咨询的谈话。您的反馈意见对我们很重要。

如果您对自己所在区域内正在发生的事务感兴趣，并希望提出您的意见，可加入当地选区委员会。查询您在区域和委员会会议召开时间，请致电 9386 7924。

欢迎致电 9369 8000 联系韦弗利市议会，或拨打 131 450 呼叫全澳翻译与传译服务 (TIS)，转接至市议会。您也可以访问市议会网站 www.waverley.nsw.gov.au。

RUSSIAN

В результате выборов в Совет, состоявшихся в сентябре 2012г. были избраны 4 новых советника Уэверли. Мы рады приветствовать Анжелу Баррилл (Angela Burrill), Эндрю Кьюсака (Andrew Cusack) и Полу Масселло (Paula Masselos), которые стали представителями палаты Lawson Ward, а также Билла Мурукаса (Bill Mouroukas), избранного в палату Waverley Ward. К новым советникам присоединятся повторно избранные кандидаты Салли Беттс (Sally Betts), Тони Кэй (Tony Kay), Доминик Уай Канак (Dominic Wy Kanak), Джой Клэйтон (Joy Clayton), Джон Уэйкфилд (John Wakefield), Леон Голтсман (Leon Goltsman), Мириам Гаттман-Джонс (Miriam Guttman-Jones) и Ингрид Струи (Ingrid Strewe). Сенатор Салли Беттс была избрана мэром Уэверли; это будет ее четвертый срок в качестве мэра. Сенатор Тони Кэй был избран на должность вице-мэра.

Ежегодный *Отчет Совета Уэверли за 2011 – 2012гг.*, охватывающий период с 1-го июля 2011г. по 30 июня 2012г., уже доступен общественности. С копиями Отчета можно ознакомиться в центре для клиентов Совета (Council's Customer Service Centre), в библиотеке Уэверли (Waverley Library) или загрузить их с сайта Совета: www.waverley.nsw.gov.au

При Совете Уэверли теперь есть консультационный отдел. Посетите сайт www.haveyoursaywaverley.com.au, чтобы присоединиться к обсуждению текущих проблем и принять участие в консультациях. Нам важно получить ваши отзывы.

Вас интересует происходящее в вашем районе, и вы хотите выразить свое мнение? Почему бы не принять участие в вашем местном исполнительном комитете? Чтобы узнать о принадлежности к району и времени собраний комитета, звоните по номеру 9386 7924.

Позвоните в Совет Уэверли по номеру 9369 8000, посетите www.waverley.nsw.gov.au или позвоните в переводческую службу TIS по телефону 131 450, и они соединят вас с нами.

What's on in Waverley

DECEMBER

Eastern Sydney Disability Information Expo

**Saturday 15 December,
11am–3pm**

Oxford St Mall, Bondi Junction

Celebrating International Day of People with a Disability, the Expo is a great opportunity for people with a disability, their carers and family members to access information on available services and support programs in Eastern Sydney.

Friendly staff from local disability services and organisations will be happy to answer your questions on the day. The Information Expo is an initiative of the Eastern Sydney Aged and Disability Services Interagency.

Senior Citizens' Concerts

**Wednesday 19 December
Bondi Pavilion, High Tide Room**

Fun for seniors with a special Christmas concert in December.
More info **8362 3400**

New Year's Eve at Dudley Page Reserve

**Saturday 31 December,
6pm–12.30am
Dudley Page Reserve**

A family friendly spot with amazing views for NYE fireworks. Bring the whole family and enjoy all that NYE has to offer. Tickets at Council's Customer Service Centre or call **1300 GET TIX** or visit **www.moshtix.com.au**. More info **8362 3430**
Adult ticket \$30 (\$35 at gate)
(includes 3 children up to 15 yrs).
Concession ticket \$12 (\$15 at gate)

JANUARY

School and Summer Holiday Program

3–25 January 2013

Waverley Council's holiday program is jam-packed full of events for kids, tweens and teens. Keep all ages happy with these fabulous holiday activities at Waverley Library, Waverley-Woollahra Arts School, Margaret Whitlam Recreation Centre and Bondi Pavilion. More info **www.waverley.nsw.gov.au/holidayprograms**

Summerama workshops and activities

9–28 January 2013

Check out this great program of free activities for kids and families over January, as part of the wider regional program organised by the Sydney Coastal Council Group.

The program includes a series of activities, all of which are free to attend, that focus on learning about, interacting with and experiencing the coastal environment in the Waverley community, as well as how to stay safe in and around the beach.

Visit **www.waverley.nsw.gov.au/summerama** for more info.

Openair Cinema

**25 January–3 March
Bondi Park**

Sunset picnics, live music and feature films under the stars in Bondi Park's Dolphin Lawn make this one of the 'must-do' experiences for the summer.

More info **www.bondiopenair.com.au**

Havaianas Thong Challenge 2013

Saturday 26 January, 11am–2pm

Havaianas Thong Challenge is a national event held on Australia Day each year. 2013 is the event's 9th birthday. The event invites participants to take part in the Thong Challenge where a chain of people float out on the water on inflatable lilo's.

To participate register online via **moshtix.com.au** prior to the event day. Be quick, as tickets are limited.

More info **www.havaianasthongchallenge.com.au**

FEBRUARY

Author Talk

**Thursday 21 February 2013
Waverley Library Theatre**

It's 200 years since *Pride and Prejudice* was first published. Join Austen author, lecturer, literary tour leader and all-round aficionado Suzanna Fullerton for the launch of her new book *Happily Ever After: Celebrating Jane Austen's Pride and Prejudice*.

Check **www.waverley.nsw.gov.au** or the Feb/Mar Library What's On closer to the date for booking details.

Illuminations 7#: Video music

**Friday 1 February 2013
6–9pm**

Bondi Pavilion, Seagull Room

Curated by Matthew Hopkins and featuring the work of Angela Garrick, Ella Barclay, Harley Ives, Kusum Normoyle, Lucy Phelan & Matthew Hopkins, Marcus Cook, Joel Stern & Pia Borg, Pia van Gelder.

This exhibition is focused on how each of these artists incorporate an innovative use of sound into their video practice through a range of screen based, projected, sculptural, and interactive works.

Summer Camp, curated by Scott Elk

**19 February–3 March 2013
Bondi Pavilion Gallery**

Very summer, very camp, and very collectible. Bright, dynamic artwork from four collectable Australian artists as part of the Sydney Mardi Gras Festival.

More info **8362 3400**

Bondi Pavilion Gallery is open 10am–5pm, 7 days a week.
Admission is free.



JOIN THE CONVERSATION

Did you know Council has a Facebook and Twitter page?

Keep up-to-date with what's happening around Waverley.



Like this page
www.facebook.com/WhatsOnWaverley



and follow
@WhatsOnWaverley on Twitter.