

# Waverley in FOCUS

Community Newsletter #57

Winter 2013

Waverley

Council



**Council's 10 Point Plan**  
Page 3



**Bondi Winter Magic**  
Page 6



**Stop gastro this Winter**  
Page 7



**Council's waste and recycling services**  
Page 10

## Congratulations to Tommy Nock

**our cover competition winner for re-creating the perfect play space**

Story page 5



# Your Waverley Councillors

## Council Contacts

Customer Service Centre	9369 8000
Resource Recovery (Waste) Hotline	9369 8080
Waverley Library	9386 7777
Bondi Pavilion	8362 3400
Bondi Junction Town Centre Office	8305 8419
Bondi & Beaches	8362 3408
Waverley SES	9698 4477
Meals on Wheels & Shopping Service	9386 7977
Waverley Cemetery	9665 4938
Mill Hill Centre	9386 7999
School of Arts	9387 2461
Bronte	
Early Education Centre	9665 7998
Gardiner	
Early Education Centre	9387 1252
Waverley	
Early Education Centre	9386 9200
Mill Hill	
Early Education Centre	9386 7902
Family Day Care	9386 7785
Community & Seniors Centre	9386 7900
Bushcare	9386 7915
Environment Team	9369 8045

*Waverley in Focus* is published by Waverley Council. If you have any enquiries or comments about the publication please contact us.

Email  
[communications@waverley.nsw.gov.au](mailto:communications@waverley.nsw.gov.au)

Post  
**PO Box 9, Bondi Junction 1355**

### Bondi Ward



**Cr Joy Clayton**  
(Liberal)

PHONE 9130 8430  
 MOBILE 0409 308 430  
 EMAIL [joyc@waverley.nsw.gov.au](mailto:joyc@waverley.nsw.gov.au)



**Cr Dominic Wy Kanak**  
(Greens)

PHONE 9130 8460  
 WORK 9369 8027  
 EMAIL [dominick@waverley.nsw.gov.au](mailto:dominick@waverley.nsw.gov.au)



**Cr John Wakefield**  
(Labor)

MOBILE 0427 023 987  
 EMAIL [johnw@waverley.nsw.gov.au](mailto:johnw@waverley.nsw.gov.au)

### Hunter Ward



**Cr Sally Betts**  
(Liberal) **Mayor**

PHONE 9130 3250  
 MOBILE 0425 363 530  
 EMAIL [sallyb@waverley.nsw.gov.au](mailto:sallyb@waverley.nsw.gov.au)



**Cr Leon Goltsman**  
(Liberal)

PHONE 8006 2799  
 MOBILE 0424 379 079  
 EMAIL [leong@waverley.nsw.gov.au](mailto:leong@waverley.nsw.gov.au)



**Cr Miriam Guttman-Jones**  
(Independent)

PHONE 9371 1412  
 EMAIL [miriamgj@waverley.nsw.gov.au](mailto:miriamgj@waverley.nsw.gov.au)

### Lawson Ward



**Cr Angela Burrill**  
(Liberal)

PHONE 9114 8981  
 EMAIL [angela@waverley.nsw.gov.au](mailto:angela@waverley.nsw.gov.au)



**Cr Andrew Cusack**  
(Liberal)

PHONE 9114 8986  
 EMAIL [andrew@waverley.nsw.gov.au](mailto:andrew@waverley.nsw.gov.au)



**Cr Paula Masselos**  
(Labor)

MOBILE 0419 292 207  
 EMAIL [paulam@waverley.nsw.gov.au](mailto:paulam@waverley.nsw.gov.au)

### Waverley Ward



**Cr Tony Kay**  
(Liberal)  
**Deputy Mayor**

PHONE 9365 7707  
 FAX 9365 7707  
 EMAIL [tonyk@waverley.nsw.gov.au](mailto:tonyk@waverley.nsw.gov.au)



**Cr Bill Mouroukas**  
(Liberal)

MOBILE 0421 341 815  
 EMAIL [billm@waverley.nsw.gov.au](mailto:billm@waverley.nsw.gov.au)



**Cr Ingrid Strewe**  
(Labor)

PHONE 9389 7299  
 FAX 9389 4639  
 EMAIL [ingrids@waverley.nsw.gov.au](mailto:ingrids@waverley.nsw.gov.au)



*Mayor Sally Betts and Director of Corporate & Technical Services, Bronwyn Kelly with our 2010 National Award for Local Government for Asset and Financial Management*

## MAYOR'S MESSAGE



With Local Government Reform a current focus, the financial sustainability of councils and their ability to provide efficient and effective services is more topical than ever.

I believe Council will only consider an amalgamation if it resulted in improved services for Waverley residents. One would then need to evaluate who you would amalgamate with to ensure there is a community of interest with any potential new residents. I do not believe the current proposal by the Independent Panel for a global city comprising Sydney, Marrickville, Leichardt, Woollahra, Randwick, Botany and Waverley would achieve this.

A recent NSW Treasury Corporation Review of councils listed Waverley as being 'well managed and resourced' with a moderate/neutral financial sustainability rating which has confirmed that Council's financial position is solid. In a recent State Government Infrastructure Audit Report for all Councils Waverley is rated as 'strong'. This means our infrastructure funding position, asset condition ratings, management capability and planning quality are all regarded as excellent.

One of the first things I said to Council when I was elected Mayor last year, was that we needed to focus on further improving our financial position and efficiency without a further rate rise in this term of Council.

In 2011 we were told that if we wanted to be able to deliver the services that residents wanted, Council would need a rate rise. We consulted extensively with the community and they told us they were prepared to support our application for the rate rise. As a result Council was able to secure the future of services and improve the condition of infrastructure.

Waverley is still a low rating Council compared to our neighbours, and staff have therefore been busy finding alternative revenue streams and savings. The great news is that we've now balanced the budget for the next 11 years, and we intend to keep it that way. This will be achieved through a 10-point plan explained on this page.

As part of this vision we are also forming an Economic Development Working Group with key staff to promote business and State and Federal Government liaison and attract investment and jobs.

This is an exciting time to be living and working in Waverley. Our Team will continue to make a strong case that any future amalgamations must lead to an improvement in the delivery of services for our residents.

**Sally Betts**

# Council's 10 Point Plan for a strong, financially sustainable future

**The future is looking bright for Waverley Council and its community with a vision for a strong and financially sustainable future that is well on track.**

Council is implementing a number of efficiency and income generation strategies that will result in a balanced budget for the next 11 years without the need for a rate rise.

### THE 10-POINT PLAN INCLUDES:

1. Capping staff numbers at their existing levels unless independent sources of funding are available or the increase is cost neutral.
2. An assertive focus on obtaining grants particularly for environmental projects.
3. A savings target on operational expenditure of \$16.5 million over the next 11 years.
4. Ensuring that developer contributions appropriately fund their share of the cost and servicing of public infrastructure.
5. Introduction of more automated service delivery particularly in on-and off-street parking, including online issuing of parking permits.
6. Development of opportunities in key businesses such as Waverley Cemetery, our Commercial Waste Business and off-street car parks.
7. Improved earnings on cash and property investments.
8. Taking advantage of loan subsidies provided by the State Government and good interest rates.
9. Taking on debt, where it can be repaid, to enable Council to bring forward asset renewal before it gets too expensive and to spread the cost of that renewal out over generations rather than load the cost totally onto the present community.
10. Timing infrastructure renewal better by assessing risk more closely and spreading out capital expenditures so they're more affordable.

### DID YOU KNOW?

The community is maintaining a higher level of compliance with parking regulations and as a result we are issuing less fines. This year we are on track to issue 15% less fines than we did in 2007/08.

**This plan will enable Council to continue to provide services to the community at the level they have told us they are happy with, and us to continue to fulfil our 2009 commitment to become less dependent on parking fine income.**

## Stay in touch with e-newsletters

Get the latest news – from our events to tips on being eco-friendly – delivered directly to your inbox. We are launching a number of email newsletters, it's as easy as subscribing on our website.

Simply click on the orange e-newsletter icon on our homepage at [www.waverley.nsw.gov.au](http://www.waverley.nsw.gov.au)

Sign up to our e-newsletters







**Caption L-R: Director of Planning & Environmental Services, Waverley Council, Peter Monks; University of Sydney Masters Planning student, Ken Shepard; Associate Director, Kinesis, David Holden; Development Executive, Westfield Development, George Arena; Divisional Manager, Environmental Services, Waverley Council, Emily Scott; Mayor of Waverley, Sally Betts; Bondi Junction Centre Manager, Westfield, Tony Gardiner**

# Urban design for the future

**Waverley Council is proud to have been selected to participate in an exciting urban design program 'Delivering a Future Sustainable City' hosted by the United States Studies Centre at University of Sydney.**

The program is based on the Mayor's Institute Forum in the United States which encourages like-minded leaders to develop innovative solutions for redesigning precincts – so they are great places to live and work but also adaptive to changes in environmental demands. Only six NSW Councils have been chosen to participate, each with a local business partner.

For Waverley, this program provides an opportunity to explore future sustainable development in Bondi Junction and look at solutions to revitalise our core commercial hub whilst reducing our carbon footprint.

This formed the focus of strategic analysis and discussion at the program's Mayor's Forum held in Sydney in early April, which we attended with our business partner Westfield. The three-day workshop was led by experts in urban re-design and sustainable development from Australia and the United States, including the renowned Rocky Mountains Institute.

"As part of the brief, Councils partner with a local business and we are pleased to be working with Westfield. Together we explored a range of public place improvements, low carbon solutions and integrated transport options during the initial workshop as part of Council's overall vision to revitalise Bondi Junction," Mayor of Waverley, Sally Betts said.

Council's project team at the workshop included Mayor Sally Betts, Council's Director of Planning and Environmental Services Peter Monks and Divisional Manager of Environmental Services Emily Scott. Westfield attendees were Tony Gardiner, Bondi Junction Centre Manager and George Arena, Australia Development Executive.

We have also been invited to a seven-day study tour of the West Coast of the United States in June to visit outstanding examples of community sustainability and livability transformations.

Following the study tour, city leaders will have the opportunity to apply their learning to Bondi Junction.



**From 29 April 2013, all pool owners in New South Wales will be required to register their swimming pools on a state-wide register.**

You can register your swimming pool online, or by lodging a completed registration form to Waverley Council.

You will have until 29 October 2013 to register your pool. If you miss this deadline, you may receive a penalty fine.

The register is one outcome of the NSW Government's review of the *Swimming Pools Act 1992*, which saw a series of amendments to improve safety measures for kids around swimming pools.

■ **For more information or to register your pool, please visit [www.waverley.nsw.gov.au/building\\_and\\_development/pools](http://www.waverley.nsw.gov.au/building_and_development/pools) or [www.swimmingpoolregister.nsw.gov.au](http://www.swimmingpoolregister.nsw.gov.au)**

## Electronic Housing Code – it's e-asier in Waverley

Lodging your complying development application in Waverley is now easier, with Council launching a new online portal as part of the NSW Department of Planning and Infrastructure's (DPI) Electronic Housing Code (EHC) Project.

The EHC system allows applicants to prepare and submit a complying development application through an online portal and then track its progress online. Council can then assess the applications online before issuing the development certificate.

Council received funding from the DPI, which has been used to implement the system.

■ **Visit [www.waverley.nsw.gov.au/building\\_and\\_development/ehc](http://www.waverley.nsw.gov.au/building_and_development/ehc) for more information.**

# Meet our cover competition winner Tommy Nock

Waverley Council recently held a drawing competition as part of the community consultation for a new Play Strategy. The children's illustration of their dream playgrounds tell us what kind of play spaces children really like.

Over 50 submissions were received, with all entries of a very high standard, making it extremely difficult to select only one. However in the end, the judging panel decided on Tommy Nock's *Hide and Seek Rainbow*, on the cover, for its imaginative and creative themes and positive message of inclusiveness.

Waverley Council wishes to thank all the children who made submissions for their outstanding achievements and excellent drawings.

When Waverley Council asked Tommy about the people in the drawing and what they were doing, Tommy responded, "Everyone is standing on the grass and there's this big sun and with a rainbow

■ For more information on the Play Strategy please contact Waverley Council's Senior Landscape Architect on 9386 7914, or email [scotts@waverley.nsw.gov.au](mailto:scotts@waverley.nsw.gov.au)

## Tamarama Park Upgrade

Waverley Council is upgrading Tamarama Park to provide better, safer facilities for residents and visitors.

The upgrade includes:

- A new family friendly kiosk and outdoor seating area
- A totally rebuilt services building with showers and toilets
- Bush care and park equipment storage and a parks amenity room
- A new slim line, cliff hugging building to include storage space for the surf club and a first aid room for lifeguards.

■ For more information and project updates visit Council's website at [www.waverley.nsw.gov.au/tamapark](http://www.waverley.nsw.gov.au/tamapark) or email Council's Divisional Manager, Maintenance & Construction, Roberty Esdaile at [roberte@waverley.nsw.gov.au](mailto:roberte@waverley.nsw.gov.au)



Mayor Sally Betts congratulating Tommy

above them. We are just standing there and looking at the rainbow and playing hide & seek".

Tommy's favourite play space in Waverley is Clementson Park, Bondi Junction (on the corner of Ebley St and Newland St).

Tommy is a six-year-old resident, currently in Year One. Congratulations Tommy on your great picture and your very own cover of Waverley in Focus!

Council is keen to talk with children and young people to ensure our play spaces work well for them.



Council launched a staged concept master plan as part of the development of the Bondi Beach, Park and Pavilion Plan of Management in late April. Some of these exciting concepts include: replacing the car park on Queen Elizabeth Drive with an underground car park to provide more green and recreation space, more trees and shade, a boardwalk connection on the coastal walk, and opening up the back of the historic Pavilion.

We have been consulting with the community on these concepts and we have had positive feedback. A lot of work has gone into this project and the outcomes to date are indicative of this hard work and professionalism from Council staff. Thank you to those of you who participated in our consultation process. For updates on this project like our Planning Bondi's Future Facebook page: [www.facebook.com/PlanningBondisFuture](https://www.facebook.com/PlanningBondisFuture)

Our lifeguards celebrated their 100th birthday last month, with Council employing our first full-time lifeguard in 1913. In 1913 there was no observation tower, no binoculars, no phone and no resuscitation equipment of any kind. One hundred years later Lifeguards patrol Bondi, Tamarama and Bronte beaches and use sophisticated telecommunication and life saving equipment every day.

A lot has changed over the past 100 years, but one thing has remained the same – Lifeguards work hard to save lives on our beaches! We thank those who have and still are working hard to keep us safe on our beaches.

We were very pleased to host the Australian Professional Lifeguard Association's 17th annual conference in Bondi in early May, in conjunction with the centenary of Waverley Lifeguard Service. Over 70 lifeguards from all around Australia attended the conference themed 'new technologies'.

**Tony Reed**  
General Manager



# BONDI



## Winter Magic 2013 **Sizzles in summer** **SPARKLES in winter**

As residents of Waverley, you know Bondi in winter is a magical place – the crowds have thinned and the warm winter sunshine sparkles on the waves. While it might be a bit chilly to swim for most, the many events, activities and special offers will get you off the couch and out of the house.

Don't let the winter blues get you down... let Bondi work its magic on you, your family and your friends this winter.



### WHALE FESTIVAL @ BONDI

Sunday 23 June, 10am–3.30pm, Bondi Beach

A day-long celebration featuring Venus the life-size inflatable Humpback Whale, whale watching guided tours (bookings required), Whale Tail colouring in competition and more.

### ART ON THE STREETS

Sunday 14 July, Roscoe Street Mall

Local painters and photographers showcase their talents in the street. Absorb the vibe and be inspired to 'chalk' up the streets with your own pavement masterpiece.

### MUSIC ON THE STREETS

Sunday 21 July, Bondi town centre

On every street corner, in every nook and cranny, musicians of all genres come out of the woodwork to play their hearts out.

### BONDI HISTORY WALKS

Sundays & Wednesdays in July

Discover Bondi's bohemian past on this fascinating guided walking tour around the streets and lanes of Bondi.

Bookings required.

### FESTIVAL OF THE WINDS

Sunday 8 September, Bondi Beach

Australian and international kite flyers display their great skills on Bondi Beach. There will also be food stalls, free dance workshops, children's rides, entertainment, puppet shows and more.

### SCULPTURE BY THE SEA

24 October – 10 November

Bondi & Tamarama

See the spectacular Bondi to Tamarama coastal walk transformed into a 2km long temporary sculpture park featuring over 100 sculptures by artists from Australia and across the world.

Find out more at

[bondiwintermagic.com.au](http://bondiwintermagic.com.au)



# Stop gastro spread this winter



**Naomi Cook is a local registered nurse, health activist and author. She has been working on reducing the spread of gastro within our local community this season. Here she talks about gastro and shares her five top tips on stopping the spread:**

Gastroenteritis is a common winter illness and this year we are facing an epidemic of a highly infectious type of gastro, the Norovirus. Norovirus is usually characterised by the sudden onset of nausea, vomiting and diarrhoea and tends to last for 24–72 hours.

Most people are unaware quite how infectious Norovirus is, and for this reason, the virus spreads easily and rapidly throughout communities, affecting work places, schools, day-care centres, nursing homes and hospitals as well, of course, as impacting on the health and wellbeing of individual community members.

There are a few things we can do to dramatically reduce gastro this winter:

- 1 Most importantly, adhere to NSW Health Guidelines, which state to 'Rest at home' for 48 hours after your last symptom of gastro. This last symptom may be a bout of vomiting but more usually, will be diarrhoea as this can continue for a while after initial infection.
- 2 'Rest at home' doesn't just mean delay the return to school, work and day-care. Carefully consider venturing into any public area during the 'still-infectious' period.
- 3 Food handlers are advised to wait a total of 48 hours before returning to their place of work after suffering from gastro, keep in mind some international guidelines suggest waiting for 72 hours.
- 4 Maintain excellent hand hygiene this winter to reduce the infection spread of other bugs too. Wash your hands thoroughly after using the toilet, when getting home after being out and before eating. Carrying a hand sanitiser is a great way of keeping your hands clean outside the house.
- 5 Finally, we need to remember that within our community are the very young, the more senior and those with pre-existing health conditions – who may not fare as well as the rest of us during a bout of gastro. By acting in accordance with the guidelines, we can help to create a community that acts with care and consideration towards its more vulnerable members.

■ For more of Naomi's information on gastro and other issues on health, wellbeing, parenting and germs visit [www.nursenaomi.wordpress.com](http://www.nursenaomi.wordpress.com)

## Bondi Pavilion

## THE CENTRE OF BONDI CULTURE

### SPECIAL EVENTS

#### Bondi Wave Showcase Concert

Saturday 3 August, 7pm,  
Bondi Pavilion Theatre



Don't miss the explosive talent of the Bondi Wave youth bands which have been bringing together their new skills in singing, performing, writing and arranging to create amazing music over the past three months during the Bondi Wave Music Course. The concert brings together nine local youth bands of 13 to 17-year-olds, with a range of exciting new and emerging talent on show. Not to be missed!

Everyone is welcome to this all-ages gig. Tickets available at the door on the night.

#### Naidoc Week Exhibition

##### Ngala Nanga Mai, We Dream, We Speak

An exhibition of art works by Aboriginal and Jewish Artists  
9–20 July, Bondi Pavilion Gallery

The Ngala Nanga Mai pAReNT group, artists from the La Perouse area and local Jewish artists combine to explore artistic ideas and to share and learn from each other. A range of media will be exhibited including a collaborative ceramic totem, paintings, and shell work.

Bondi Pavilion Gallery open 7 days, 10am–5pm. Entry free.

### Waverley Youth Art Award

Entries will be closing for this annual art prize on 17 June, so be sure you get your work in! Works from 12–25 year old residents of the Eastern Suburbs will be accepted and eligible for cash prizes in a variety of categories. Opening Night and Awards Ceremony will be held at 6pm, Thursday 27 June. Everyone welcome.



Exhibition runs 28 June–7 July, Bondi Pavilion Gallery

### THEATRE

#### Upcoming Productions

The Removalists, 14 May–15 June

Robots vs Art, 18 June–7 July

Bondi Feast, 13–27 July

Empire, Terror on the High Seas, 28 August–28 September

Stories for Grommets, 10am, every Friday

More info [www.rocksurfers.org](http://www.rocksurfers.org) or call 1300 241 167



### GALLERY

#### Upcoming Exhibitions

Head On Photo Festival, 17 May–26 June

Shabbat Dinner, 23–26 July

Warlu Art Centre, 12–25 August



For more information call the Bondi Pavilion on 8362 3400 or visit [www.waverley.nsw.gov.au/bondipavilion](http://www.waverley.nsw.gov.au/bondipavilion)



## Waverley Design Awards

Recognising outstanding urban design



**L-R: Mayor Sally Betts, Chris Elliot, Sam Crawford, Lisa Kitching (owner), Tone Wheeler, Steven Salgo (owner), Wendy James – winners for 40 Yanko Ave, Bronte**

**The 2013 Waverley Design Awards were held at the Bondi Surf Bathers' Life Saving Club on Wednesday 17 April.**

Two awards were presented on the night – the Waverley Award, which recognises outstanding contemporary design and heritage conservation for buildings and open space in Waverley, and the People's Choice Award, which is popularly voted by members of the community.

This year's selection panel, which included Chris Elliott (Chris Elliott Architects), Tone Wheeler (Environa Studios), Cr Tony Kay, Cr Angela Burrill and Council's Director of Planning and Environmental Services, Peter Monks, praised the high calibre of entries this year, deciding to award the Waverley Award to four properties. The winners were:

- MPR Design Group for a multi-storey residential development at 5 Waverley Crescent, Bondi Junction
- Innovarchi Architects for alterations and additions to the house at 33 Hewlett Street, Bronte
- MPR Design Group for a mixed-use development at 39–53 Campbell Parade, North Bondi
- Sam Crawford Architects for alterations and additions to the house at 40 Yanko Ave, Bronte.

The People's Choice was this year awarded to owners Robert and Jane Gescheit and Gutnik Design Group for their house at 24 Lord Howe Street, Dover Heights.

Bonnie Ickowicz was the lucky winner of a \$50 Bondi Junction Westfield shopping voucher for casting her vote for the People's Choice Award.

# Streamlining the planning process

**From 1 July 2013, Waverley Council will start a trial of an Independent Planning Panel to determine significant Development Applications (DAs) in the Waverley community.**

This will help streamline the planning process, reducing DA processing times by up to 45 days and removing Councillors from the decision-making process for determining those DAs. This will allow them more time to focus on strategic planning issues, such as the planning controls that underpin DA decisions.

The move is in line with 'best practice' recommendations for future planning outlined in the recent release of the NSW Government's White Paper.

It is expected that the trial panel will be appointed by July 2013 and will comprise a pool of members including community representatives, environmental lawyers, planners, architects (including specialists in heritage and aboriginal heritage), urban designers, and disability sector advocates.



**The Sun-Herald City2Surf is coming up on Sunday 12 August, with around 80,000 people expecting to finish the race in Bondi.**

To improve access and safety, there will be a number of special event clearways and traffic changes in place throughout the event. Keep an eye on our website and [livetraffic.rta.nsw.gov.au](http://livetraffic.rta.nsw.gov.au) for information about the traffic changes.

Residential parking permits do not allow you to park on a special event clearway. Make sure you know when and where the special event clearways are in operation so you don't get towed and fined.

### WHAT IS A SPECIAL CLEARWAY?

You must not stop or park on a length of road where a special event clearway sign applies. The drivers of public buses, taxis and hire cars are permitted to stop when dropping off or picking up passengers. If your vehicle is left on a clearway it will be towed away, usually to a nearby street and fines apply.





## DON'T BE CHICKEN... *Become A Fowl!*

Do you love books and reading? Want to meet people and get involved in literary events? Join our Friends of Waverley Library today!

Since starting in 1993, Friends of Waverley Library (FOWL) volunteers have helped set up library collections, bought artworks, set up book clubs, coordinated book sales and helped run author and literary events at the Library.

In return, FOWL members receive:

- 10% discount at Gertrude & Alice and Dymocks Bondi Junction
- quarterly *FOWL Deeds* newsletter
- free vouchers to some paid Library events.

Waverley Library

## What's On

### Are you in the know?

Do you want to be one of the first to hear about Waverley Library's author talks, workshops, holiday programs and special events?

Over 1,000 people have already subscribed to our bi-monthly *What's On* newsletter.

You can join them by visiting [www.waverley.nsw.gov.au/library](http://www.waverley.nsw.gov.au/library) and clicking on the home page subscription web banner and we'll send you a short and sweet newsletter once every two months. Too easy!

## The 'NIB' Waverley Library Award for Literature 2013

Waverley Council is pleased to announce that entries for the 2013 'Nib' Waverley Library Award are now open.

This prestigious Award recognises excellence in research in a literary work of merit, first published between 1 July 2012 and 30 June 2013. Other factors considered by the judges include readability, literary merit and value to the community.

All kinds of fiction and non-fiction are eligible. The winner receives \$20,000 and all shortlisted authors receive a \$1000 Alex Buzo prize.

Guidelines and application forms are available by calling 9386 7709 or at [www.waverley.nsw.gov.au/nib](http://www.waverley.nsw.gov.au/nib)

Entries close 12 July 2013.



## Tech TIME at Waverley Library

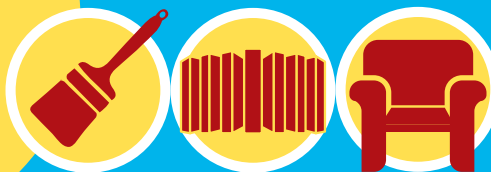
Baffled by bytes? Confused by computers? Finding social media unsociable?

Waverley Library is launching a series of free and practical technology and social media workshops, designed to help people feel more confident and at home with technology.

Small groups led by Library staff will be available from 10 July and will cover topics such as basic introduction to computers, using tablets, setting up and using free emails, getting the most out of Facebook and other social media.



## We're changing our look!



## You may notice some changes at the Library over the next few months...

We're moving some of our collection around to make it easier for you to find what you're looking for.

There'll be improved signage and some of the shelving will be revamped. With new lounge seating areas, more computer stations and upgraded internet

access, and a bright new look, we think you'll find the new-look Library a more open, bright and relaxing space.

The upgrade will happen gradually to minimise disruption, but please chat to staff if you have any feedback or questions about the changes or location of items.

# Your Waste and

## Community action to reduce waste

Waverley Council's Environmental Action Plan will help us create a green future for Waverley.

Part of this is our commitment to sending only 25 per cent of waste to landfill and not allowing our waste to increase beyond 2003/04 levels, by 2020.

So far, we're on track. Residents have:

- Reduced their garbage by 4672 tonnes since 2004
- Recycled 8710 tonnes of garden waste since the introduction of the green lid bin in 2004
- Recycled 115 tonnes of e-waste since 2006.

We need your help to do even more to keep us on track and protect where we live.

■ If you have any questions call our Resource Recovery Hotline on 9369 8080 or visit [www.waverley.nsw.gov.au](http://www.waverley.nsw.gov.au)

### OUR RECENT WASTE SURVEY RESULTS

Thank you to everyone who took time to complete our Waste and Recycling Survey over summer. We received close to 400 responses with useful comments about how we can improve Council's waste services.

#### Snapshot of key findings\*:

- 92% think Council's waste calendar is useful
- 40% use a compost bin or worm farm at home
- 75% think illegal dumping happens because people don't care
- 62% think that more education is the key to stopping illegal dumping
- 44% believe that the main reason people don't recycle is that they don't think it really gets recycled
- 16% think that more education in schools will encourage people to recycle more

\* % results are % of respondents

The results of this survey will help guide future waste and recycling education and engagement programs in Waverley.

■ For more information email [environment@waverley.nsw.gov.au](mailto:environment@waverley.nsw.gov.au).

## Don't dump on your street

Did you know you risk a \$1200 fine for dumping rubbish on the footpath?

Do your neighbours a favour and don't dump your rubbish, we can pick it up for you instead. It's so easy...

We collect unwanted whitegoods, furniture and household goods once a year.

Visit our website and type in your address to find out when your next pick up is.

You can also arrange two free 'Your Call' collections a year:

1. Call 9369 8080 at least eight days in advance of your anticipated collection
2. Put out your items on the kerbside the day before your booked collection day
3. Make sure you remove the doors from fridges and other appliances.

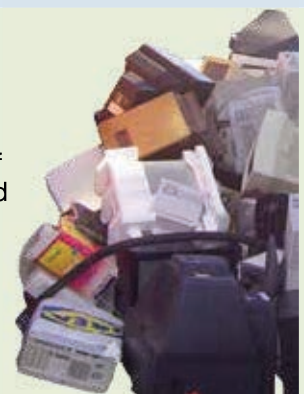
That's three free household rubbish pick ups a year!

## Special waste recycling

### Electronic Waste (E-Waste) Collection Days

Council holds free E-Waste recycling drop off days for residents twice a year. Bring your old computers, televisions, mobile phones and much more to be recycled.

Please refer to our website for dates and further information.



### Chemical Clean Out

Household chemicals, pesticides, poisons, gas bottles, pool chemicals and car batteries can be disposed of for free at Chemical Clean Out collection days.

For more information phone 131 555 or visit [www.cleanout.com.au](http://www.cleanout.com.au).





# Recycling Services

## Put the right thing in the right bin

FREE YOUR RECYCLABLES  
NO PLASTIC BAGS



### WEEKLY COLLECTION

### FORTNIGHTLY COLLECTION

#### RED LID BIN: GARBAGE

The contents of red lid bins are sent to landfill. To minimise landfill recycle, compost or worm farm everything you can before using the red lid bin.

Make sure there are no recyclables or garden waste in this bin. Buy reusable, repairable and refillable products.

#### YELLOW LID BIN: CONTAINERS

This includes:

- Plastic containers and bottles
- Glass bottles and jars
- Aluminium and steel cans
- Aerosol cans

Remove all lids and ensure containers are empty before recycling.

#### BLUE LID BIN: PAPER AND CARDBOARD

This includes:

- Newspapers and magazines
- Cardboard, egg cartons and empty pizza boxes
- Telephone books
- Milk and juice cartons

Remove plastic wrap from newspapers before recycling.

#### GREEN LID BIN: GARDEN WASTE

These include:

- Tree branches no greater than 100mm in diameter
- Grass clippings
- Pruning's
- Leaves
- Weeds

Cut up branches and Christmas trees to fit inside your bin.

## Your bins

### STOLEN OR DAMAGED BIN?

Let us know and we'll investigate. Repairs are free but a fee may be charged to replace your bins.

### EXCESS WASTE?

Organise an extra collection by calling 9369 8080. Recycling is free; fees apply for garbage/garden waste.

### CAN I HAVE AN EXTRA BIN?

You can buy extra recycling bins, but having extra garbage bins means you'll have to pay an additional annual Domestic Waste Charge.

### MOVING?

Leave your bins at the property. If your new property doesn't have bins, call the local council.

## Be part of the Compost Revolution!

Feed food scraps and garden waste to your compost, and reap the benefits for yourself and your garden!

Compost bins are the best for houses to help break down garden waste, while wormfarms are great for apartments and can go inside or on balconies. It's easy once you know how - come along to our free workshops or learn more on our online tutorial.

Every household can get a free Compost Bin or Wormfarm delivered.

Just visit [www.compostrevolution.com.au](http://www.compostrevolution.com.au), do the tutorial, take the quiz, and order yours today.

Is what you're throwing out still useable? Keep it out of landfill by donating to charity or posting online through many of the reuse websites such as Gumtree or OzRecycle.

## Watch out for bush regeneration abseilers



**Council has received grant funding from the state government's Metro Greenspace Program to undertake bush regeneration works along the clifftops adjoining the walkways of the Waverley Cliff Top Walk and Eastern Beaches regional trails.**

This funding boost has enabled Council to engage professional bush regeneration abseilers to

control weeds on the more harder-to-reach sections of the clifftops adjoining the walkways, as well as extending Council's ongoing weeding and revegetation program along the East Coast Vegetation Corridor. This native vegetation is precious and vulnerable, facilitates fauna movements along this highly urbanised eastern suburbs coastline and requires ongoing active management.

## Supporting our communities sustainability projects

Twice a year community groups and schools can apply to Council for grants up to \$3000 for their environmental projects.

Congratulations to Moriah Public School which was successful in the last round with their application to create a wildlife garden in its grounds which sit adjacent to the important and rare Eastern Suburbs Banksia Scrub.

Other great projects ongoing or just finished include Permaculture Sydney's community workshops series 'Skilling up to Power Down', North Bondi Playgroups native haven and Transition Sydney's Bondi Bee-o-Diversity & Garden Upgrade.

■ **The next round of grants open in August, and you can apply for community or environmental grants. Keep your eye out on our website for more information.**

## Ride to School Day

**On Friday 22 March pupils in Waverley participated in Ride to School Day, a national celebration of active travel to school which encourages healthy activity and trials a potential strategy to reduce traffic congestion around schools. Children walked and rode their bikes and scooters to school that day.**

Bondi Beach, Bondi, Waverley and Bronte public schools took up the offer of a piece of fruit for all children and teachers participating on the day. They worked up quite an appetite with 11 boxes of apples, mandarins and plums being devoured! Students made great use of the bike and scooter racks installed at these schools last year by Waverley Council.







## Sustainable apartment living

Want to make some changes in your life to reduce your environmental impact but are not sure how to do it in your small apartment?

There are plenty of things you can do, whether you rent or own, like joining our Compost Revolution to get a free wormfarm to fit in your balcony or kitchen or borrowing one of our energy smart meters from the library to see where you can cut down on energy use simply and cheaply.

We're holding a free workshop on sustainable apartment living on Monday 29 July that might help you with some ideas. Come join in on the relaxed café discussion, or come to Barrett House for our workshop 'Tips and Tricks for a green home'.

■ See our Eco-wise sustainability workshop program for more info.

## Eastern Green Thumbs Network

Eastern Suburbs residents with the support of Waverley, Randwick and Woollahra councils have a new gardening network. The network meets quarterly for a practical workshop followed by a facilitated session for sharing experiences and ideas and is open to anyone interested in sustainable gardening.

So far this year Eastern Green Thumbs Network participants have learnt to 'Pickle and Preserve' and make window boxes out of old fence pailings.

Membership and attendance is free. It's a great way to meet with like-minded people and talk about what you're passionate about.

■ For info, join the Facebook group [www.facebook.com/groups/EasternGreenThumbs](http://www.facebook.com/groups/EasternGreenThumbs) or visit [www.reduceyourfootprint.com.au](http://www.reduceyourfootprint.com.au)

# FREE ENVIRO WORKSHOPS

## JUNE

### RAINWATER TANK TECHNICAL WORKSHOP

**Wed 12 June**, 6.30–8.30pm  
Margaret Whitlam Centre,  
Waverley Park, Bondi

### BIKE MAINTENANCE WORKSHOP

**Wed 12 June**, 6–9pm  
Mill Hill Centre, Bondi Junction

### LOVE LEFTOVERS, REDUCE FOODWASTE

**Thurs 20 June**, 1–3pm  
Queens Park Room, Waverley  
Council Chambers, Bondi

### BASIC CYCLING SKILLS WORKSHOP

**Sun 30 June**, 10am–1pm  
Waverley Park

## JULY

### BONDI THE BEAUTIFUL FAIR

**Sun 7 July**, 10am–3pm  
Bondi Park

### CLOTHES SWAP PARTY

**Wed 10 July**, 6.30–8pm,  
Bondi Surf Life Saving Club

### BIKE MAINTENANCE WORKSHOP

**Wed 24 July**, 6–9pm  
Mill Hill Centre, Bondi Junction

### SUSTAINABLE LIVING FOR RENTERS

**Mon 29 July**, 6–8.30pm  
Lox, Stop & Barrel Café,  
Glenayr Ave, Bondi

## AUGUST

### TIPS & TRICKS FOR A GREEN & HEALTHY HOME

**Tues 6 August**, 10.30am–12.30pm  
Barrett House, Randwick

### ROCKPOOLS – LINKS TO THE LAND

**Sat 17 August**, 10am–12noon  
Starting from Bondi Pavilion, Bondi

### BUSH TUCKER AND SUSTAINABILITY

**Sun 25 August**, 10.30am–12.30pm  
Margaret Whitlam Centre,  
Bondi Rd, Bondi

### BIKE MAINTENANCE WORKSHOP

**Wed 28 August**, 6–9pm  
Mill Hill Centre, Bondi Junction

### PROPAGATING YOUR OWN PLANTS

**Sat 31 August**, 9.30am–12.30pm  
Waverley Community Garden,  
Bondi Junction



■ For more information, visit [www.waverley.nsw.gov.au/environment/whats\\_on](http://www.waverley.nsw.gov.au/environment/whats_on)



# Lifeguards celebrate

# 100 *years*

**Waverley Lifeguards celebrate 100 years of Council's service this year. Celebrations included a centenary event on Bondi Beach on 23 May, where lifeguards demonstrated rescue techniques from 100 years ago using a reel, as well as modern day rescues on jet-skis.**

In 1913, when Council's first lifeguard was employed, things were very different. There was no observation tower, no binoculars and no resuscitation equipment and lifeguards wore the original one-piece beach inspector's costume with a Panama hat.

The first lifeguard in 1913 was Dennis 'Dinny' Brown who had the sole responsibility of keeping swimmers at Bondi safe. Now Waverley Council employs 35 lifeguards to keep our beaches safe.

Bondi is now one of the world's busiest beaches with up to 50,000 visitors on a summer's day and 15,000 rescues by the lifeguards in an average summer.

A big thank you to our lifeguards, both past and present, for 100 years of saving lives.

L-R: Mayor Sally Betts, Lifeguard Dean Gladstone (in the one piece uniform from the 70s) and Gabrielle Upton MP, Member for Vaucluse at the centenary event on Bondi Beach in April.



# THE FIRST LIFEGUARD IS APPOINTED



*Dennis (Dinny) Brown, 1st WC lifeguard and his wife and daughters*

**In 1913 Waverley Council employed its first full time professional Lifeguard to protect swimmers on Bondi Beach, this was Dennis (known as 'Dinny' or 'Denny') Brown, a local Bronte stonemason and member of North Bondi Surf Life Saving Club.**

It was actually the Bondi Surf Bathers' Life Saving Club which lobbied Council for a 'permanent man' or a 'permanent lifesaver' to be appointed to Bondi Beach, specifically after a tragic drowning occurred in March, 1912. The Waverley Council minutes of 14 October, 1913 record: 'Resolved: that the report of the Town Clerk that D.Brown lifesaver at Bondi Beach be appointed as a beach inspector under ordinance 52 [that] be adopted and that the appointment be given under common seal.'

Brown was well qualified – he had won a competition in 1911 to find the best lifesaver on Bondi Beach. In his new role he was to do a daunting solo patrol of Bondi during the week days. The salary? £3 per week. There was no Lifeguard tower, no phone,

no medical or resuscitation equipment, in fact Council provided no facilities for him at all. He was based at the Bondi Surf

Bathers' Life Saving Clubhouse and used their equipment; later he had a small room in the first Bondi Pavilion.

The provision of permanent Lifeguards, who would determine safe bathing areas on a daily basis, depending on currents, weather conditions and rips was an entirely new concept in surf safety.

After he retired Dennis Brown went back to his 'home beach' of Bronte where he operated the dressing sheds and a kiosk. This photo of Dennis Brown in his older years with his wife and daughters is one of the only ones known to exist.

■ For more information on our fascinating local history see the Local Studies section on Council's website, [www.waverley.nsw.gov.au](http://www.waverley.nsw.gov.au)



## ENGLISH

Get the latest news – from our events to tips on being eco-friendly – delivered directly to your inbox. We are launching a number of email newsletters, it's as easy as subscribing on our website. Simply click on the orange e-newsletter icon on our homepage at [www.waverley.nsw.gov.au](http://www.waverley.nsw.gov.au)

The City 2 Surf is coming up on Sunday 12 August. Approximately 80,000 people will be finishing this year's race in Bondi. To improve access to the area as well as for safety purposes, there will be a number of special event clearways and traffic changes in place throughout the event. Keep an eye on our website and [livetraffic.rta.nsw.gov.au](http://livetraffic.rta.nsw.gov.au) for information about the traffic changes.

Lodging your complying development application in Waverley is now easier, with Council launching a new online portal as part of the NSW Department of Planning and Infrastructure's (DPI) Electronic Housing Code (EHC) Project. Visit [www.waverley.nsw.gov.au/building\\_and\\_development/ehc](http://www.waverley.nsw.gov.au/building_and_development/ehc) for more information.

From 29 April 2013, all pool owners in New South Wales will be required to register their swimming pools on a state-wide register. For more information or to register your pool, please visit [www.waverley.nsw.gov.au/swimmingpools](http://www.waverley.nsw.gov.au/swimmingpools) or [www.swimmingpoolregister.nsw.gov.au](http://www.swimmingpoolregister.nsw.gov.au).

## SPANISH

Reciba las últimas noticias, desde los eventos que organizamos hasta consejos prácticos para respetar el medio ambiente, entregadas directamente a su bandeja de entrada. Estamos lanzando una serie de boletines informativos electrónicos, para obtenerlos sólo necesita suscribirse en nuestro sitio web. Simplemente haga clic en el icono naranja de boletines informativos electrónicos (e-newsletters) de nuestra página de inicio, en [www.waverley.nsw.gov.au](http://www.waverley.nsw.gov.au)

City 2 Surf tendrá lugar el domingo 12 de agosto. Aproximadamente 80.000 personas completarán la carrera de este año en Bondi. Para mejorar el acceso al área, y también por motivos de seguridad, se determinarán zonas especiales donde no se podrá estacionar y cambios en el tránsito durante toda la duración del evento. Consulte nuestro sitio web y [livetraffic.rta.nsw.gov.au](http://livetraffic.rta.nsw.gov.au), para obtener información sobre los cambios en el tránsito.

Presentar una solicitud para desarrollo inmobiliario regulado en Waverley ahora es más fácil, ya que la Municipalidad ha lanzado un nuevo portal en línea como parte del Proyecto de Código electrónico de vivienda (EHC) del Departamento de Planificación e Infraestructuras (DPI) de Nueva Gales del Sur. Visite [www.waverley.nsw.gov.au/building\\_and\\_development/ehc](http://www.waverley.nsw.gov.au/building_and_development/ehc) para obtener más información.

Desde el 29 abril de 2013, todos los dueños de piscinas de Nueva Gales del Sur tendrán que registrar sus piscinas de natación en un registro a nivel estatal. Para obtener más información o registrar su piscina, visite [www.waverley.nsw.gov.au/swimmingpools](http://www.waverley.nsw.gov.au/swimmingpools) o [www.swimmingpoolregister.nsw.gov.au](http://www.swimmingpoolregister.nsw.gov.au).

## HUNGARIAN

Iráttalcsájára kiszállítva megkaphatja a legfrissebb híreket – eseményeinktől kezdve tippekig, hogy hogy lehet környezetbarát. Email hírleveleket indítunk meg, amelyek honlapunkon könnyen elérhetők. Egyszerűen kattintson a narancssárga hírlevél szimbólumra honlapunkon a [www.waverley.nsw.gov.au](http://www.waverley.nsw.gov.au) címen.

A City 2 Surf (várostól a tengerig) jön majd vasárnap, augusztus 12.-én. Körülbelül 80 ezren fejezik be majd a versenyt Bondi-ban. Az esemény folyamán több gyorsforgalmi út valamint forgalomváltoztatás lesz érvényben a környék jobb elérhetősége és biztonság céljából. Forgalomváltoztatásra vonatkozó tájékoztatásért nézze meg honlapunkat valamint a [livetraffic.rta.nsw.gov.au](http://livetraffic.rta.nsw.gov.au) címet.

Most már könnyebben benyújthatja Waverley-ben a törvénnyel összhangban lévő fejlesztési kérelmét, mivel a tanács új online portált indít a NSW-i Tervezés- és infrastruktúraügyi minisztérium (DPI) elektronikus építési kód (EHC) projektjének a keretében belül. Keresse fel a [www.waverley.nsw.gov.au/building\\_and\\_development/ehc](http://www.waverley.nsw.gov.au/building_and_development/ehc) címet további tájékoztatásért.

2013 április 29.-től kezdve minden New South Wales-i úszómedence tulajdonos köteles úszómedencéjét az egész államra kiterjedő nyilvántartásnál bejelenteni. További tájékoztatásért vagy hogy úszómedencéjét bejelentse keresse fel a [www.waverley.nsw.gov.au/swimmingpools](http://www.waverley.nsw.gov.au/swimmingpools) címet vagy a [www.swimmingpoolregister.nsw.gov.au](http://www.swimmingpoolregister.nsw.gov.au) címet.

## GREEK

Μάθετε τα τελευταία νέα – από εκδηλώσεις μέχρι υποδείξεις για το πώς να είστε φιλικό προς το περιβάλλον – κατευθείαν στα εισερχόμενά σας. Παρουσιάζουμε έναν αριθμό ενημερωτικών δελτίων στο ηλεκτρονικό ταχυδρομείο, είναι τόσο εύκολο όσο η εγγραφή σας στον ιστότοπο. Απλά πατήστε το πορτοκαλί εικονίδιο του ενημερωτικού δελτίου στην αρχική μας σελίδα.

Το City 2 Surf είναι προγραμματισμένο για την Κυριακή 12 Αυγούστου. Περίπου 80,000 άτομα θα τελειώσουν φέτος τη διαδρομή στο Bondi. Για να βελτιωθεί η πρόσβαση στην περιοχή καθώς και για λόγους ασφαλείας, θα υπάρχει ένας αριθμός ειδικών ελεύθερων διαβάσεων των εκδηλώσεων και αλλαγές στην κυκλοφορία κατά όλη τη διάρκεια της εκδήλωσης. Κοιτάξτε τον ιστότοπό μας και το [livetraffic.rta.nsw.gov.au](http://livetraffic.rta.nsw.gov.au) για πληροφορίες στις αλλαγές της κυκλοφορίας

Η υποβολή της αποδεκτής αίτησης για ανάπτυξη στο Waverley είναι τώρα πιο εύκολη, με την παρουσίαση από τον Δήμο της νέας ηλεκτρονικής θύρας του Υπουργείου Σχεδιασμού και Υποδομών της ΝΝΟ (Department of Planning and Infrastructure's (DPI) το Πρόγραμμα Ηλεκτρονικού Κώδικα Στέγασης Electronic Housing Code (EHC). Επισκεφτείτε το [www.waverley.nsw.gov.au/building\\_and\\_development/ehc](http://www.waverley.nsw.gov.au/building_and_development/ehc) για περισσότερες πληροφορίες.

Από τις 29 Απριλίου 2013, όλοι οι ιδιοκτήτες πισίνας στη Νέα Νότια Ουαλία θα πρέπει να καταχωρήσουν τις πισίνες τους σε μητρώο όλης της Πολιτείας. Για περισσότερες πληροφορίες ή για να καταχωρήσετε την πισίνα σας, σας παρακαλούμε επισκεφτείτε το [www.waverley.nsw.gov.au/swimmingpools](http://www.waverley.nsw.gov.au/swimmingpools) or [www.swimmingpoolregister.nsw.gov.au](http://www.swimmingpoolregister.nsw.gov.au).

## SIMPLIFIED CHINESE

获取最新新闻——从我们举办的各项活动的信息到生态保护建议——都可以直接发送到您的收件箱中。我们将推出多种电子邮件新闻通信，登录我们的网站即可订阅。只需点击我们首页[www.waverley.nsw.gov.au](http://www.waverley.nsw.gov.au)上的桔黄色电子新闻通信图标就可订阅。

City 2 Surf长跑比赛将于8月12日星期日举行。大约80,000人将在Bondi参加今年的比赛。为改善该地区的交通，同时也是为了安全，活动举办期间会实施多项特殊活动道路交通管制措施。请随时查看我们的网站和[livetraffic.rta.nsw.gov.au](http://livetraffic.rta.nsw.gov.au)，以了解有关交通变化的信息。

在Waverley递交合规开发申请现在更简单了，市议会推出了全新的网上门户，该举措是新州规划与基础设施部 (DPI) 电子住房规范 (EHC) 项目的一部分。详情请访问 [www.waverley.nsw.gov.au/building\\_and\\_development/ehc](http://www.waverley.nsw.gov.au/building_and_development/ehc)。

从2013年4月29日起，新州所有泳池的所有人必须在全州登记系统中登记其泳池。查询详情或登记泳池，请访问[www.waverley.nsw.gov.au/swimmingpools](http://www.waverley.nsw.gov.au/swimmingpools)或[www.swimmingpoolregister.nsw.gov.au](http://www.swimmingpoolregister.nsw.gov.au)。

## RUSSIAN

Получайте последние новости – от наших мероприятий до полезных советов по охране окружающей среды – прямо в ваш электронный почтовый ящик. Мы начинаем рассылку электронных сводок новостей, на которую очень просто подписаться на нашем веб-сайте. Нужно лишь щелкнуть мышкой по оранжевой иконке новостей (e-newsletter) на нашей домашней странице: [www.waverley.nsw.gov.au](http://www.waverley.nsw.gov.au)

Забег «Из города-на пляж» (City 2 Surf) назначен на воскресенье, 12 августа. Около 80 000 человек примут участие в забеге в районе Bondi в этом году. Чтобы улучшить доступ к месту проведения, а также в целях безопасности, будут введены специальные зоны и ограничения дорожного движения. Чтобы узнать об изменениях дорожного движения, обратитесь на наш сайт или сайт: [traffic.rta.nsw.gov.au](http://traffic.rta.nsw.gov.au).

Значительно упростилась процедура подачи заявлений на утверждение планов на строительство (complying development application), поскольку Совет Уэверли запустил в работу новый онлайн-портал в рамках проекта Департамента планирования и инфраструктуры НЮУ (NSW Department of Planning and Infrastructure, DPI) под названием «Электронный код жилья» (Electronic Housing Code, EHC). За дополнительной информацией обращайтесь на сайт: [www.waverley.nsw.gov.au/building\\_and\\_development/ehc](http://www.waverley.nsw.gov.au/building_and_development/ehc).

Начиная с 29 апреля 2013г., всем владельцам плавательных бассейнов штата Новый Южный Уэльс необходимо зарегистрировать эти бассейны в реестре штата. Чтобы узнать подробнее о том, как зарегистрировать свой бассейн, посетите сайт: [www.waverley.nsw.gov.au/swimmingpools](http://www.waverley.nsw.gov.au/swimmingpools) или [www.swimmingpoolregister.nsw.gov.au](http://www.swimmingpoolregister.nsw.gov.au).

# What's on in Waverley

## JUNE

### Seniors Concert

**Wednesday 19 June, 1.30–2.30pm**  
High Tide Room, Bondi Pavilion

Monthly concert of music entertainment for local seniors. Light refreshments are served. For bookings call **8362 3400**.

### Waverley Youth Art Award

**Opening night: Thursday 27 June from 6pm. Exhibition runs 29 June–7 July, 10am–5pm daily, admission is free**  
Bondi Pavilion Gallery, Queen Elizabeth Drive, Bondi Beach

This annual art prize is open to 12–25 year old residents of the Eastern Suburbs. This year's theme 'iGeneration'.

### Last-Sunday-of-the-month book sale

**30 June, Waverley Library foyer**

Quality donated and pre-loved library stock. Great bargains for kids and adults.



Visit [www.waverley.nsw.gov.au/holidayprograms](http://www.waverley.nsw.gov.au/holidayprograms) for the full program of events.

## JULY

### Free tax help at Waverley Library

**July–October, Reference Library**  
If your tax affairs are simple we have accredited volunteers that can help you lodge your e-tax return on the spot. Bookings open 15 July. 9386 7733.

### Interactive author event: Morag White, The Publicity Push

**Wednesday 3 July, 6.15–7.30pm, Waverley Library Theatre**

Build and sustain a media profile for your business with public relations expert and author Morag White. To book visit [www.eventbrite.com.au](http://www.eventbrite.com.au) or call 9386 7777. Free, includes light refreshments.

### Bondi Winter Magic

**Throughout July, Bondi**

Bondi will be buzzing with family-fun festivities, music on the streets, dining specials, art shows and more.

### Bondi the Beautiful Fair

**Sunday 7 July**  
Bondi Park, Bondi Beach

Bondi the Beautiful Fair celebrates everything beautiful about Bondi, including the environment. There will be children's entertainment including a native animal display, roving entertainers and performances. Live music, community stalls, plant giveaways, demonstrations and refreshments.

For more info visit [www.bondiwintermagic.com.au](http://www.bondiwintermagic.com.au)

### Exhibition: We Dream, We Speak

**8–21 July, 10am–5pm daily, admission is free**  
Bondi Pavilion Gallery, Queen Elizabeth Drive, Bondi Beach

An exhibition of art works by Aboriginal and Jewish artists. Coinciding with NAIDOC Week. The exhibition will bring together artists from the La Perouse area to explore ideas and to share and learn from each other.

### Computer Pals Club for Seniors

**Starting Monday 15 July (enrolments on Tuesday 2 and Thursday 4 July)**

Training Centre located at 30 Ebley Street, Bondi Junction. Courses include: Intro to computing, e-bay, Skype, Microsoft Word and more.

For more info call **9369 4072** or visit [www.compalseast.org.au](http://www.compalseast.org.au)

### Seniors Concert

**Wednesday 17 July, 1.30–2.30pm**  
High Tide Room, Bondi Pavilion  
For bookings call **8362 3400**.

### Waverley Art Prize 2013 exhibition

**19 July–7 August, Library Foyer Gallery**

Featuring a selection of work by finalists in this prestigious annual award, now in its 28th year, as chosen by the 2013 judges: Melissa Egan, Peter Griffen and Richard Martin.

### Last-Sunday-of-the-month book sale

**28 July, Waverley Library foyer**

Quality donated and pre-loved library stock. Great bargains for kids and adults.

## AUGUST

### Bondi Wave Showcase Concert

**Saturday 3 August, 7pm**  
Bondi Pavilion Theatre, Queen Elizabeth Drive, Bondi Beach

Come and experience the explosive talent of the Bondi Wave Youth Bands at this end of course concert. After three months of intensive creative learning, the Youth Bands will give us a taste of their new songwriting, music and performance skills. Tickets available at the door. For more information call the Pavilion on **8362 3400**.

### The Sun-Herald City2Surf

**Sunday 12 August**

The *Sun-Herald* City2Surf is the world's largest run, with approx 80,000 registered participants.

Run, walk or watch the 14km race from Hyde Park in Sydney's CBD to the finish at Bondi Beach.

For more details including road closures and clearways please visit [www.city2surf.com.au](http://www.city2surf.com.au)

 Like this page  
[www.facebook.com/WhatsOnWaverley](http://www.facebook.com/WhatsOnWaverley)

 and follow  
[@WhatsOnWaverley](https://twitter.com/WhatsOnWaverley) on Twitter.



**Waverley In Focus is a free quarterly newsletter published by Waverley Council**