

Waverley in FOCUS



Community Newsletter #63 Summer 2014/2015

WAVERLEY
COUNCIL

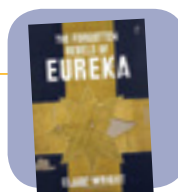
A closer look at local government reform



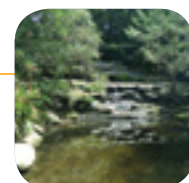
ALSO INSIDE...



Project name
for Bondi
Junction's future
Page 8



The 2014
Nib Award
winner
Page 11



Enviro News
Pages 12 & 13



Your Waverley Councillors

Council Contacts

Customer Service Centre	9369 8000
Resource Recovery (Waste) Hotline	9369 8080
Waverley Library	9386 7777
Bondi Pavilion	8362 3400
Bondi Junction Town Centre Office	8305 8419
Bondi & Beaches	8362 3408
Waverley SES	9698 4477
Meals on Wheels & Shopping Service	9386 7977
Waverley Cemetery	9665 4938
Mill Hill Centre	9386 7999
School of Arts	9387 2461
Bronte Early Education Centre	9665 7998
Gardiner Early Education Centre	9387 1252
Waverley Early Education Centre	9386 9200
Mill Hill Early Education Centre	9386 7902
Family Day Care	9386 7785
Community & Seniors Centre	9386 7900
Environment Team	9369 8045

Waverley in Focus is published by Waverley Council. If you have any enquiries or comments about the publication please contact us.

Email
communications@waverley.nsw.gov.au
 Post
PO Box 9, Bondi Junction 1355

Bondi Ward



Cr Joy Clayton
 (Liberal)
 PHONE 9130 8430
 MOBILE 0409 308 430
 EMAIL joyc@waverley.nsw.gov.au

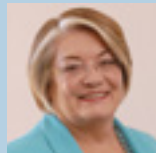


Cr Dominic Wy Kanak
 (Greens)
 PHONE 9130 8460
 WORK 9369 8027
 EMAIL dominick@waverley.nsw.gov.au



Cr John Wakefield
 (Labor)
 MOBILE 0427 023 987
 EMAIL johnw@waverley.nsw.gov.au

Hunter Ward



Cr Sally Betts
 (Liberal) **Mayor**
 PHONE 9130 3250
 MOBILE 0425 363 530
 EMAIL sallyb@waverley.nsw.gov.au



Cr Leon Goltsman
 (Liberal)
 PHONE 8006 2799
 EMAIL leong@waverley.nsw.gov.au



Cr Miriam Guttman-Jones
 (Independent)
 PHONE 9371 1412
 EMAIL miriamgj@waverley.nsw.gov.au

Lawson Ward



Cr Angela Burrill
 (Liberal)
 PHONE 9114 8981
 EMAIL angela@waverley.nsw.gov.au



Cr Andrew Cusack
 (Liberal)
 PHONE 9114 8986
 EMAIL andrew@waverley.nsw.gov.au



Cr Paula Masselos
 (Labor)
 MOBILE 0419 292 207
 EMAIL paulam@waverley.nsw.gov.au

Waverley Ward



Cr Tony Kay
 (Liberal) **Deputy Mayor**
 PHONE 9365 7707
 FAX 9365 7707
 EMAIL tonyk@waverley.nsw.gov.au



Cr Bill Mouroukas
 (Liberal)
 MOBILE 0421 341 815
 EMAIL billm@waverley.nsw.gov.au



Cr Ingrid Strewe
 (Labor)
 PHONE 9389 7299
 FAX 9389 4639
 EMAIL ingrids@waverley.nsw.gov.au



A message from the Mayor

The next 12 months are going to be critical in Waverley's future. The state government is pushing ahead with its reform package and we need to be ready by June 2015 to put a submission to the government expressing the community's view about their future.

As you will see from this publication, we intend to supply the whole community with all the information you need to make an informed decision about our future. This will mean information on various scenarios that are available to us.

There is good news. With the help of ratepayers and internal savings, we have turned the Council's financial situation around since the 2006/2007 Annual Report stated that this Council was unsustainable into the future.

We are now in a really sound financial position and our report card from New South Wales Treasury Corporation (TCorp) is good. We are also making a big dent in the infrastructure backlog that was unfortunately allowed to grow to alarming levels prior to 2008.

We have many exciting projects on our books, with our new depot in Alexandria complete, our amenities building in Waverley Park open and the Bondi Plan of Management approved so we can commence upgrading picnic shelters, toilets and start planning for the upgrade of our iconic Pavilion at Bondi.

Our new larger outdoor gym at Bondi Park is a great success, the upgrade of Clarke Reserve playground is already greatly loved and our plans for building a new lifeguard tower at Bronte Beach are moving ahead. Work on the internal walls and fences in the Cemetery will start soon and even the temporary fence on Trafalgar Street is an improvement to the horrible orange tape that was on the old fence for what seemed to be years.

“...we now meet most of the government's criteria for local councils to be *Fit for the Future*.”

Underpinning all our projects in Bondi Junction, as we outlined in our last *Waverley in Focus*, are our aspirational environmental targets, which we are confident we can meet.

We therefore feel that we NOW meet most of the government's criteria for local councils to be *Fit for the Future*. There is still some uncertainty about our 'scale and capacity' as our 70,000 resident numbers may not meet the criteria set out by the state government.

The government has also been talking about 'communities of interest' and for us that means its preferred option of having us merge with City of Sydney, Woollahra, Randwick and Botany Bay councils to promote and support the ongoing development of Sydney as Australia's premier global city.

There have also been talks around trying to find clear and distinct borders around any new council,

and we will need to consider both these issues when we put forward our submission.

Please keep an eye on our *Fit for the Future* tab on our website, and be assured that we will keep the whole community fully informed. I look forward to being in touch with you regarding this critical issue.

Sally Betts
Mayor of Waverley



Local government reform and the future of Waverley

Local government reform – it's a hot topic that's been on the agenda since 2011.

The momentum shifted when the state government announced its *Fit for the Future* package in September this year and requested all councils around the state start assessing what this meant for them and their communities.

Whether to amalgamate or not is a complex discussion, but we need to ensure that you understand all the options so that you can make an informed decision.

In this edition of *Waverley in Focus*, we take you through:

- the background, including the details of the NSW Government's reform package – *Fit for the Future*
- what this could mean for Waverley Council
- our next steps.

THE BACKGROUND

The NSW Government's vision is to deliver a strong future for its people. In order to do this, NSW needs to have strong councils that continue to provide the services and infrastructure that communities need.

Unfortunately, the state government has found that more than one-third of NSW's local councils are facing financial problems and an overwhelming infrastructure backlog.

Talks of local government reform surfaced in mid-2011 and since then the state government has done a lot of work to determine how to best make councils around NSW strong and efficient.

AUGUST 2011

In August 2011, Mayors and General Managers from around NSW met at the Destination 2036 summit to plan the future of local government. Discussion at the summit considered a range of ways for local government to improve, including whether the number of councils in NSW was optimum. Mayor Sally Betts and a former Director attended on behalf of your council.

MARCH 2012

In March 2012, the NSW Government appointed a Local Government Independent Review Panel to consult with councils and research options to make them more efficient.

OCTOBER 2013

In October 2013, following talks with local councils, the *Revitalising Local Government – Final Report* was released by the NSW Independent Local Government Review Panel.

The report recommended a range of options for achieving local government reform, including a number of amalgamations – combining local government areas – in the Sydney metropolitan area to minimise the number of councils.

The Review Panel's preferred option was for the amalgamation of City of Sydney, Waverley, Woollahra, Randwick and Botany Bay councils to promote and support the ongoing development of Sydney as Australia's premier global city.

Our website has an overview of information, with links to Council reports, fact sheets and media releases.

Simply click the 'local government reform' button on the homepage www.waverley.nsw.gov.au.

Timeline



SEPTEMBER 2014

On 10 September 2014, as a response to the findings of the comprehensive independent review, the NSW Government announced its *Fit for the Future* package.

Essentially, this package is asking all councils to review their operations against designated criteria, prepare a submission by 30 June 2015 and make the transition to a more efficient structure.

The criteria we'll need to address are:

- scale and capacity
- financial sustainability
- efficiency
- infrastructure and services
- the views of our community.

The *Fit for the Future* package also includes up to \$1 billion of support and incentives for councils to reform.

The NSW Government announced it will establish an Independent Expert Panel in 2015 to assess individual submissions. Once the review is complete, councils will receive feedback before the panel makes its recommendations to the Minister for Local Government.

Local government reform around Australia

Around Australia, local government reform is not uncommon. All past and current reforms aim to do one thing: ensure each state is strong and able to meet the needs of their communities.

VICTORIA

In 1993, Victorian Premier, Jeff Kennett, spearheaded a reform which saw the number of Victorian councils drop from 210 to 79.

QUEENSLAND

In Queensland, the previous 157 local government areas were consolidated to 73 in order to deliver a stronger local government structure. There are now 77 local councils as some of those amalgamated councils are now de-amalgamating.

WESTERN AUSTRALIA

In WA, Premier Colin Barnett has announced the reduction of the number of Perth metropolitan councils from 30 to 16.

SOUTH AUSTRALIA

In October this year, the topic was once again front and centre in South Australia, where there's currently a push for council areas that service less than 60,000 people to join forces.

CLOSER TO HOME...

Changes in Waverley have also occurred in the past. In 2002, following a recommendation from the Sproats Inquiry, the boundary of Bondi Junction between Waverley and Woollahra was moved from Oxford Street to the Syd Einfield Drive.



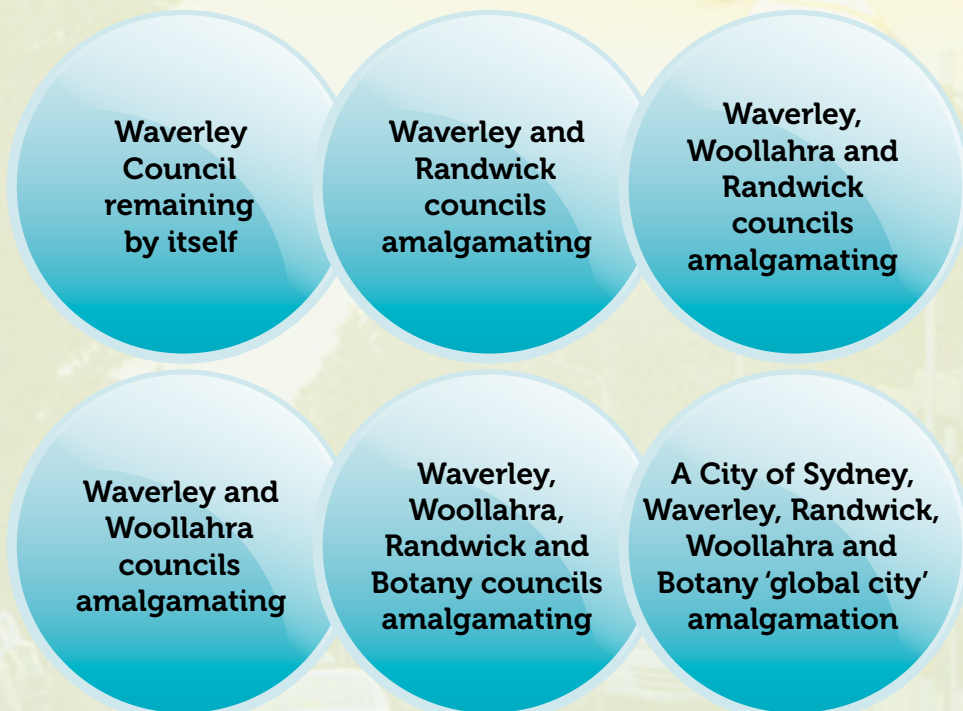


What this means for Waverley Council

Most local governments would prefer not to amalgamate, but the NSW Government has been very clear that it wants to reduce the number of Sydney metropolitan councils (of which there are currently 41).

The NSW Government is likely to encourage local councils to merge and if this happens, we need to be prepared and have a voice at the amalgamation table so that we can control our own future.

We're investigating the benefits of all the options that may be available to us. These include:



Our focus is you. We need to ensure the outcome is one that benefits our community and that services continue to be delivered effectively and efficiently.

It's not as simple as accepting or rejecting an amalgamation deal. We want you to have the detail of the advantages and disadvantages of each option in order for you to tell us what you prefer for our community's future.

Our next steps

Over the next few months we'll be gathering all the facts.

Your feedback on the options and their advantages and disadvantages will then be sought through widespread community engagement, and this will inform our *Fit for the Future* submission.

We have such an incredible variety of people in our community: young and old, people from many backgrounds and walks of life. We want to get feedback from as many of you as possible.

We're in the early stages and are still determining various ways to go about this, but below is a brief timeline of our next steps.

Timeline for community consultation

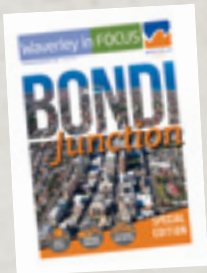


Want more information?

Our website – www.waverley.nsw.gov.au – will be updated with our progress, so be sure to keep an eye on it.

The *Fit for the Future* website also provides more details about the package www.fitforthefuture.nsw.gov.au.

A new name for the Bondi Junction of the future...



In the spring edition of *Waverley in Focus*, we asked for your help to name Bondi Junction's transformation.

We received 58 entries and after much deliberation, the winning name was picked by Mayor, Sally Betts, General Manager, Arthur Kyron and Council's three Directors.

The winning project name is...

**Bondi Junction:
Heartbeat of the
East**

It's a great name and it was suggested by two people! Congratulations to Virginia Gordon and Oliver Colman, who have each won a \$100 Westfield voucher.

Huge thanks to Oliver and Virginia for helping us decide on a project name for the future of Bondi Junction. You'll be seeing a lot more of it as we continue to transform the area in to great place to live, work and play.

Virginia Gordon, a country girl who hails from Bathurst, has been living next door to Bondi Junction, in Queens Park, for the past 30 years.

She said the project name – Bondi Junction: Heartbeat of the East – came to her as she reflected on all the great things the area has to offer.

"I have lived here for quite some time and I think Bondi Junction is finally getting the love that it deserves. It has so much to offer and so much to celebrate.

"The changes that we're already seeing in the Junction are really exciting. It's much more than improving infrastructure – there's a real shift towards bringing people together and creating a real sense of community," she said.

Virginia confesses to picking about 20 names before deciding on Heartbeat of the East.

"I'm really happy to have played a part and picked the project name for the area's renewal. Bondi Junction sits at the centre of everything in Waverley – it's the heartbeat. I'm looking forward to seeing what happens next," she said.



Oliver Colman was born in North Bondi and has lived in Sydney's Eastern Suburbs his entire life. He's a dentist and his practice has been nestled on Oxford Street for about 30 years.

"Bondi Junction is my stomping ground. There is a lot happening in the area; a lot of improvements."

He always has an eye on council news and found out about the project naming competition through our Facebook page.

"I loved the idea of the naming competition. It was great to see council reaching out to people and it's a brilliant way for everyone to get involved and really play a part in Bondi Junction's next phase."

Mr Colman said he likes to piece things together and that's how the name – Bondi Junction: Heartbeat of the East – came to him.

"I thought of the human body and how that's the infrastructure. It's the roads, the buildings, and also the landscape. The soul is really the people; the community. And the heart, well that's at the centre of everything. It's where all the action happens. I truly feel that's what Bondi Junction is – it's the centre; the heartbeat of not only Waverley, but also of Sydney's Eastern Suburbs."



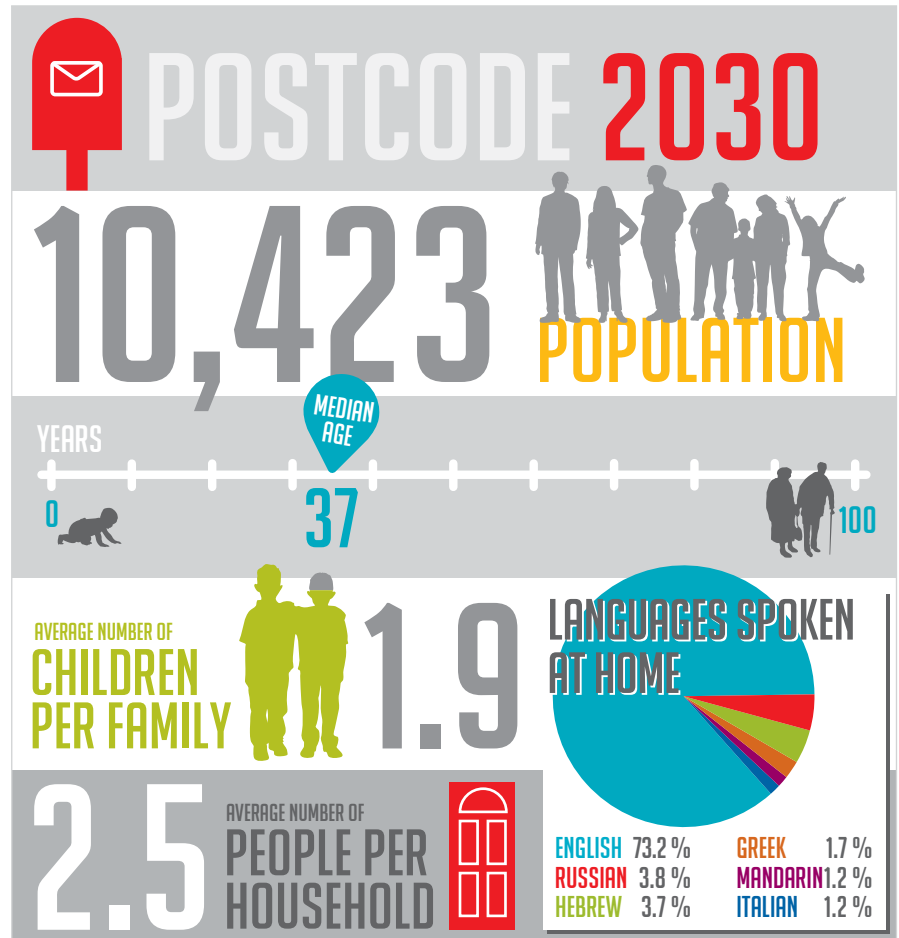
SPOTLIGHT ON

Dover Heights

Dover Heights overlooks Rose Bay and North Bondi. Its name was inspired by its cliffs, which resemble those found at Dover, in Kent, England.

There's plenty to do in the area. Check out Dudley Page Reserve, which has a spectacular view of Sydney Harbour and is home to our amazing children's bike track. There are also our other reserves: Rodney, Raleigh and Hugh Bamford, where whale watching is superb. It's also a great place to watch the Sydney to Hobart yacht race.

And, then there's the stunning Waverley Cliff Walk – a popular attraction that's recognised for its natural beauty and panoramic views out to the ocean. The walk stretches three kilometres from Bondi to Diamond Bay. It takes about two hours so make sure you wear comfortable shoes and take water.



*sourced from 2011 Census Quick Stats

Enjoy New Year's Eve at Dudley Page Reserve!

NEW YEAR'S EVE
DUDLEY PAGE RESERVE
 31 DECEMBER 2014 6pm – 12.30am

TICKETS
 available from moshtix.com.au
 or Council's Customer Service Centre
 Limited tickets after 9pm at gate

Adult \$35 (\$40 at gate)
 admits 1 adult & 2 children under 16

Concession \$15 (\$20 at gate)
 pensioners, registered carers

Bring a picnic rug and enjoy the relaxed atmosphere and incredible views with family and friends. There'll be jumping castles, food stalls, face painting, laid back entertainment and a licensed bar.

Gates open at 6pm.

We encourage attendees to use alternate means, such as public transport, to get to the event, as there'll be no parking available and many of the roads around Dudley Page Reserve will be closed on New Year's Eve.

Summer in Waverley



The sun is shining and the beaches are getting busier. It can only mean one thing – summer is here!

Before you pack your togs, towels, picnic baskets and valuables for a day at the beach, read on to make sure you've got all the bases covered for a fun, safe and litter-free day.

Check yourself

Enjoy the balmy days with a picnic by our beaches this summer – just don't pack alcohol. Our beaches and parks are alcohol-free zones and our rangers do patrol the areas. To protect local residents, we don't allow any amplified music, so just enjoy the company of your mates and family and the awesome views.

Wise up

Don't be alarmed – there's plenty you can do to help keep your valuables safe while enjoying a quick dip at one of our beautiful beaches:

- don't chuck a towel over your prized possessions – make sure they're secured somewhere or looked after by someone you know and trust.
- hire a locker – for a small fee, you can hire a secure locker inside Bondi Pavilion and near the Bondi Surf Club.
- take only what you need to the beach.

Pick up

Here are our top tips for picking up at the beach today:

- don't leave your rubbish on the sand – pop it in a plastic bag and drop it in the bins provided along the promenade.
- separate your rubbish from your recycling – there are both recycling and garbage bins at all our beaches, so do the right thing and put it in the right bin.
- remember there's no smoking on our beaches – use the ashtrays along the beach promenades and keep the sand smoke and butt-free.
- if you see rubbish on the sand, pick it up – it might just save the life of a sea animal. Plus, you're helping keep the beach beautiful and clean.

Don't let rubbish ruin your day at the beach – let's keep the surf and sand clean and pristine for all to enjoy.

Help us spread the message **#KeepBondiBeautiful**.

Swim safe

Swimming in the ocean can be fun, but also dangerous. Remember:

- always swim between the flags – no flags, no swim.
- don't swim alone if you're not an experienced or confident swimmer. Swim with a friend or make sure someone's watching out for you.
- don't swim if you've just enjoyed a few drinks at a nearby restaurant or pub.
- learn the telltale signs of dangerous rips and waves. If you do get caught in a rip, raise your hand for help, stay calm and float.

Our lifeguards patrol Bondi, Tamarama and Bronte beaches. They're on duty between 6am and 7pm at Bondi and Bronte beaches, and 9am to 7pm on Tamarama Beach throughout summer.

Have fun

There are always loads of things to do in the area during summer. Starting on Saturday 10 January, we'll be hosting a weekend Beach Library at Biddigal Reserve in North Bondi as well as many other family friendly activities throughout summer.

Visit www.mybondisummer.com.au for more tips and suggestions for a great summer.



Waverley Library Award for Literature

Recognising Excellence in Research



Congratulations Clare Wright, winner of 2014's the Nib: Waverley Library Award for Literature!

The judges chose Clare for her revisionary, historical book, *The Forgotten Rebels of Eureka*. She received the \$20,000 prize at an awards ceremony held in November.

Clare was also the recipient of the Nib People's Choice Award, where the community was able to vote for their favourite shortlisted book. Clare received \$500 as a prize for this special award.

Congratulations also to Paul Daley (ACT) and Michael Jennings (Bondi Beach), the two lucky people who voted and had their names chosen at random to win an awesome prize pack, including a set of shortlisted books and dinner at Icebergs.

Finally, thank you to our sponsors: Friends of Waverley Library, Gertrude and Alice Cafe Bookstore, Bondi Icebergs Club, and our media partners Wentworth Courier and 89.7 FM Eastside Radio. The Nib People's Choice Award was funded by Mark Moran Vaucuse. Mark Moran Vaucuse are proud to sponsor literary arts in Waverley.

All nominated books from this year's award are now available at Waverley Library!

The five other shortlisted authors were:



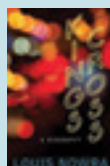
Let the Land Speak: A history of Australia – how the land created our nation
Jackie French
(Harper Collins)



Where the Song Began: Australia's birds and how they changed the world
Tim Low
(Penguin)



The Reef: A passionate history: The Great Barrier Reef in twelve extraordinary tales
Iain McCalman (Penguin)



Kings Cross: A biography
Louis Nowra
(New South Publishing)



Killing Fairfax: Packer, Murdoch and the ultimate revenge
Pamela Williams
(Harper Collins)

A LOOK BACK ON 2014

Waverley Family Day Care celebrates 40 years!

This year marked the 40th anniversary of Waverley Family Day Care. Back in 1974 our program was one of the pilot schemes for family day care in Australia.



Staff from our family day care program

Lead-up to a summer of beginner skate lessons!

Waverley Action for Youth Services (WAYS), in partnership with Bondi Skate Riders Club and Waverley Council, delivered the first of 12 beginner skate sessions in November. The inaugural event included two one-hour sessions of instructive, fun lessons with pro skateboarder Adam Luxford. The lessons will continue throughout the summer months at a temporary, purpose built area next to Bondi Skate Park.

Keen to get involved? Contact WAYS on **9365 2500** or email ways@ways.org.au.

Local Heroes 2014

The amazing and selfless work of our outstanding local citizens was recognised at our Local Hero Award ceremony in August. Congratulations to Joan 'Heather' Johnson, our 2014 Local Hero and Liron Smith, who received the 2014 Young Local Hero Award.



BIODIVERSITY IN ACTION

- two projects in the spotlight

Bronte Gully

- Ecological Restoration Plan

The draft Bronte Ecological Restoration Plan to restore the native bushland of Bronte Gully is open for comment until the end of January 2015.

The Plan will take approximately 30 years to complete and builds on the great work the staff and bushcare volunteers have done to date. It'll use best practice bush regeneration techniques and a staged approach to restore one of the largest and most diverse patches of native bushland in Waverley. It'll also significantly improve wildlife habitat in the area.



For more information on either of these two projects and to provide comment go to www.haveyoursaywaverley.com.au or call 9369 8176.



Biodiversity Action Plans for Remnant Sites - on public exhibition until 30 January 2015

Waverley has 11 unique areas of vegetation that form part of Australia's natural heritage and provide habitat to local wildlife.

These 'remnant vegetation' pockets vary in size and type from grasslands to bushland and coastal heath scrub. The condition of these areas also vary, with some sites needing urgent attention so that they're not lost.

Where are these remnant areas?

Some are found along the coastal walks, whilst others are a stone's throw from our most cherished beaches, like Tamarama. Other sites are scattered among the cliffs, rock shelves and near Centennial Park.

Council, in conjunction with environmental ecologists, has prepared action plans that are needed to maintain or improve vegetation at these sites. This will help us deliver our biodiversity targets under our Environmental Strategy to:

- ensure no loss of remnant vegetation based on 2009/2010
- ensure 40 per cent of remnant vegetation is in good condition by 2020

Actions include targeted weed management, removal of exotic species and planting native buffer zones. At sites such as Hugh Bamford Reserve and Tamarama Gully, we'll consider using controlled ecological fire burns to create new growth.



We're going solar

5 'COOL' TIPS Summer without the bill headaches

With the mercury rising, it's tempting to crank up the air-con. Yet high electricity prices are making everyone sweat more over cooling costs at home. Use these simple tips to help you keep the heat at bay this season.



Fans operate at a fraction of the running cost of air-con and can reduce the number of days you use air-con.



Keep your air-con temp between 18–21°C. Each degree cooler can add 15% to your energy bill!



Close doors of the rooms you want to cool.



Shade west-facing windows with blinds or curtains to keep out the harsh afternoon heat.



Draught-proof your doors and windows to keep warm air out and cool air in (DIY kits are available at hardware stores).



For a fun way to stay cool, take a refreshing ocean dip at one of our local beaches. Dive in!

There's nothing like a bit of sunshine to boost the spirit. We're taking 'fun in the sun' to the next level by generating our own solar power.

This year, we've installed six new solar power systems at our facilities:

- Three Early Education Centres: Gardiner, Bronte and Waverley
- Bondi Beach Early Childhood Health Centre
- New depot at Alexandria
- Waverley Park amenities building.

This adds to existing solar power systems at the Bondi Pavilion, Margaret Whitlam Centre, Mill Hill Early Education Centre, Tamarama Kiosk and Bronte Child Care Centre, which were installed in the late 90s.

These 11 systems – with a total capacity of 153.25 kW – will each year:

- produce around 218,700 kWh electricity free from the sun. That's equivalent to powering 30 Australian homes
- save over \$55,000 on energy bills
- help reduce greenhouse gas emissions by 219 tonnes, which is equivalent to taking close to 50 cars off the road.

Taking the rubbish out of apartment living

We're working with you to increase recycling rates. We've been focussing on overcoming some of the challenges of managing waste and recycling in unit blocks.

We conducted a pilot study to get to the bottom of what's working and what isn't in apartment buildings. We were also keen to understand more about your current recycling experiences.

You may have already met one of our Waste Education staff in their apartment block survey rounds.

Representatives from the community, including residents and local property managers, have also contributed ideas on new ways to increase apartment block recycling as part of a 'Brains Trust' forum. These discussions, along with our other research, shed some light on key recycling issues in Waverley.

As part of our pilot study, a range of innovative strategies have been developed and are starting to be rolled out.

Watch this space!

Did you know?

- Units, flats and apartments make up 60 per cent of private homes in our area
- Making products from recyclable materials uses less energy and water than from scratch
- 36 per cent of residential and public place waste is currently recycled with Council's goal to double that by 2020.



Further questions, comments or ideas? We'd love to hear from you. Contact Sustainable Waverley on **9369 8000** or environment@waverley.nsw.gov.au.

Waverley Library celebrates 50 years!

Waverley Library is a much loved community space – it's a stronghold of learning and research where curiosity thrives.

It all started in 1964, when Waverley Council unanimously decided to support a free public library. A budget of £20,000 bought 12,000 books, which were first housed and processed in two tiny rooms upstairs in the Bondi Pavilion.

On Saturday 26 September 1964, Waverley Municipal Library officially opened. The library was located in the current Waverley Woollahra Arts School on Bondi Road.

What were people curious to learn when the library first opened? Some topics of interest included the history of the Australian press, tapeworms in animals, orchid growing, and Cretan mythology.

Soon the library was ready to move into a new home, which could better serve the public. In 1967, Waverley Council bought the former Brunswick Bowling Alley at 14-26 Ebley Street in Bondi Junction and renovated its spacious floor plan. The new site opened on 2 December 1967.

The success of Waverley Library was due in large part to the vision of Ron Lander, the Chief Librarian at Waverley Library for 33 years. It was during these first years of the library's life that a pattern was created, beginning a long line of Waverley Library firsts:

1968 *First library in NSW to open on Sunday.*

1973 *First local government library to meet the Library Board of NSW standards.*

1984 *First public library in Australia to become computerised.*

On 17 July 1999, the Ron Lander Centre opened. With twice the space of the previous building, the library has become a very popular destination with over half a million visits per year, well above the state average.

The library is still the place to go to find a good read but its services have grown since those early years. Now, Waverley Library is busy with books as well as programs, events and gallery exhibitions. Celebrating 50 years is an exciting milestone. Here's to many more wonderful years!



Library staff, then...



... and now

English

Summer is here!

Before you pack your togs, towels, picnic baskets and valuables for a day at the beach, make sure you've got all the bases covered for a fun, safe and litter-free day.

Please swim between the flags, swim to your ability and take note of the signs. If you feel as though you're getting into trouble in the water, raise your arm to alert the Lifeguards.

Watch your valuables when you're at the beach. Take what you need, or hire a locker so that your possessions are safe and sound.

Don't let rubbish ruin your day – let's keep the surf and sand clean and pristine for all to enjoy.

Visit www.mybondisummer.com.au for more tips and suggestions for a great summer.

Russian

Наконец настало лето!

Прежде чем паковать свой купальник, полотенца, корзины для пикника и прочие принадлежности, чтобы провести день на пляже, убедитесь, что вы готовы к полному веселью, безопасному дню без мусора.

Убедительная просьба – плавать только между флажками, не переоценивать свои способности по плаванию и обращать внимание на окружающую среду.

Следите за ценными вещами на пляже. Берите только самое необходимое или возьмите в аренду камеру хранения, чтобы ваши ценности находились в безопасности.

Постарайтесь, чтобы мусор не омрачил ваш день – давайте будем содержать океан и пляж в чистоте, чтобы полноценно насладиться летом.

Посетите сайт: www.mybondisummer.com.au, чтобы узнать подробнее о том, как весело провести лето.

Italian

È arrivata l'estate!

Prima di preparare i vostri indumenti, teli mare, cestini per il picnic e altre cose necessarie per una giornata in spiaggia, assicuratevi di aver fatto tutto il possibile per passare una giornata divertente, sicura e non inquinante.

Nuotate tra le bandiere in base alla vostra abilità e prestate attenzione ai cartelli. Se pensate di essere in pericolo in acqua, alzate il braccio per richiamare l'attenzione dei bagnini.

Tenete d'occhio i vostri oggetti preziosi mentre siete in spiaggia. Portate ciò di cui avete bisogno oppure noleggiate un armadietto, al fine di tenere i vostri oggetti al sicuro.

Non fatevi rovinare la giornata dai rifiuti, manteniamo l'acqua e la spiaggia pulite così che tutti possano goderselo.

Visitate il sito www.mybondisummer.com.au per ulteriori informazioni, consigli e suggerimenti per passare un'estate stupenda.

Spanish

¡El verano ya llegó!

Antes de preparar la ropa, las toallas, las canastas de picnic y sus objetos de valor para pasar un día en la playa, asegúrese de tomar todas las precauciones necesarias para disfrutar un día divertido, seguro y sin basura.

Asegúrese de nadar entre las banderas, de nadar según su capacidad y de prestar atención a los carteles. Si siente que empieza a tener problemas cuando está en el agua, levante el brazo para avisar a los salvavidas.

Cuando esté en la playa, vigile sus objetos de valor. Lleve solo lo que necesite o alquile un casillero para que sus efectos personales estén seguros y a salvo.

No permita que la basura le arruine el día, mantengamos las olas y la arena limpias y prístinas para que todos podamos disfrutarlas.

Visite www.mybondisummer.com.au para obtener más consejos y sugerencias excelentes para disfrutar un verano excepcional.

Simplified Chinese

夏天来啦!

在带上泳衣、浴巾、野餐食品和贵重物品到海滩玩一天之前，一定要确保为这一天的游乐、安全和不乱扔垃圾作好了一切准备，

游泳请勿超出警示旗标定的范围，要量力而游，并要注意危险情况的先兆。如果你在水中开始感觉不妥，就要用力挥动手臂招唤救生员。

在海滩要看管好自己的贵重物品。去海滩只随身携带必需品，或租一个储物柜以保证你的物品安全无虞。

不要让垃圾毁了你快乐的一天 - 保持海水清澈，沙滩洁净，让大家都能享受美好的海滨。

访问 www.mybondisummer.com.au, 查看更多实用提示和建议，度过一个愉快的夏季。

Greek

Έφτασε το καλοκαίρι!

Πριν πάρετε τα ρούχα, τις πετσέτες, τα καλάθια πικ-νικ και άλλα προσωπικά σας αντικείμενα για μια ημέρα στην παραλία, βεβαιωθείτε ότι έχετε καλύψει τα πάντα για μια διασκεδαστική, ασφαλή και χωρίς σκουπίδια ημέρα.

Παρακαλούμε να κολυμπάτε μεταξύ των σημαιών, να κολυμπάτε ανάλογα με την ικανότητά σας και να λαβαίνετε υπόψη τις πινακίδες. Αν αισθάνεστε ότι αντιμετωπίζετε προβλήματα ενώ κολυμπάτε, σηκώστε το χέρι σας για να ειδοποιήσετε τους ναυαγοσώστες.

Να προσέχετε τα προσωπικά σας αντικείμενα όταν είστε στην παραλία. Πάρτε μαζί σας ό,τι χρειάζεστε, ή νοικιάστε ένα ντουλάπι για να φυλάξετε με ασφάλεια τα υπάρχοντά σας.

Μην αφήνετε τα σκουπίδια να καταστρέψουν την ημέρα σας - ως κρατήσουμε τη θάλασσα και την άμμο πεντακάθαρους για να τις απολαύσουν όλοι.

Επισκεφθείτε το www.mybondisummer.com.au για περισσότερες σπουδαίες συμβουλές και προτάσεις για ένα σπουδαίο καλοκαίρι.

What's on in Waverley



DECEMBER

Carols by the Sea

Wednesday 10 December, 6–8.30pm
Bondi Pavilion, Bondi Beach

FREE. Come together in the spirit of Christmas to sing til your heart's content.

Seniors Concert

Wednesday 17 December, 1.30–2.30pm
Bondi Pavilion, Bondi Beach

FREE. A fun and entertaining concert including music and dance is held for senior citizens Wednesdays of each month in the High Tide Room at the Bondi Pavilion. The concert runs from 1.30–2.30pm and light refreshments are served. Entry is free but please call the Bondi Pavilion on **8362 3400** to book.

Dudley Page Reserve NYE

Wednesday 31 December 2014
6pm–12.30am

Dudley Page Reserve, Military Road,
Dover Heights

Bring a picnic rug and enjoy the relaxed atmosphere and incredible views with family and friends! There will be jumping castles, food stalls, face painting, laid back entertainment and a licensed bar.

Adults \$35 (\$40 at gate)
Concession \$15 (\$20 at gate)

Tickets from www.moshtix.com.au

For more What's On...



[www.facebook.com/
WhatsOnWaverley](http://www.facebook.com/WhatsOnWaverley)



[@WaverleyCouncil](https://twitter.com/WaverleyCouncil)

Have your Say

haveyoursaywaverley.com.au

We want to know how we can better communicate with you and deliver information to you. Hop on to our community feedback website and fill out our survey.

You'll go in the draw to win some fabulous prizes, including a dinner for two at one of the area's most iconic restaurants – Bondi Icebergs.

Copies of the survey are also available at our Customer Service Centre, on Spring Street, Bondi Junction. You'll be able to leave your feedback until the end of January 2015. We look forward to hearing from you!

JANUARY

Summer School Holiday Program

5–23 January 2015

Bondi Pavilion, Waverley Library and Margaret Whitlam Recreation Centre
Great activities for the kids. For more info visit www.waverley.nsw.gov.au

Cemetery Walking Tours

Saturday 10 January, 9–11am
Waverley Cemetery

Join our volunteer guide for a tour of this special working cemetery, visiting the graves of some of the notable people who chose Waverley for their resting place. Bookings must be secured before the tour by calling the cemetery office on **9665 4938**. Meet at the office at least 15 mins before the start time.

\$22. Payments accepted on the day.

Getting ready for Summerama!

Throughout January

Want to learn more about the amazing creatures that inhabit our beautiful coast? Keen to take part in fun and amazing activities?

Held in January each year, Summerama is all about having fun and learning and experiencing our coast. Details available on www.summerama.com.au. Be sure to get in early so you don't miss out!

For more information, contact Ale Torres on **9369 8045** or email environment@waverley.nsw.gov.au



**Reconciliation
AUSTRALIA**

Innovative Reconciliation Action Plan endorsed

In October, Waverley Council endorsed our first Reconciliation Action Plan (RAP) for 2014–16.

The plan reflects council's substantial commitment to reconciliation efforts and provides opportunities for exploring innovative and creative approaches to reconciliation locally and regionally. Council is now awaiting official endorsement of the RAP by Reconciliation Australia, who coordinate the program on a national scale.

The RAP will strengthen our long history of building relationships with our partners and community members to improve cultural practices, programs and protocols. More information relating to this plan is available on our website www.waverley.nsw.gov.au.

Precinct meetings

There are no precinct meetings scheduled for January 2015. A calendar for February is being finalised and will be available on our website soon:

www.waverley.nsw.gov.au

If you'd like more information, please call Mary Shiner, our Community Liaison Coordinator, on **9369 8120**.