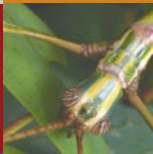
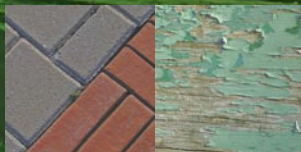


# State of the Environment REPORT 2006





© Waverley Council 2006

Waverley Council  
Cnr Bondi Road & Paul Street  
Bondi Junction NSW 2022

**PHONE** 02 9369 8000

**FAX** 02 9387 1820

**EMAIL** [waver@waverley.nsw.gov.au](mailto:waver@waverley.nsw.gov.au)

**[www.waverley.nsw.gov.au](http://www.waverley.nsw.gov.au)**

# Introduction

**Welcome to** Waverley Council's 12th consecutive State of the Environment Report (SoE) prepared by Waverley Council for the Waverley Local Government Area. The report covers the period from 1 July 2005 to 30 June 2006.

This report is a supplementary document prepared in accordance with the *Local Government Act 1993* that is designed to support the comprehensive document prepared for 2001 – 2004.

This Supplementary Report is an update of environmental conditions. For more detailed information, the comprehensive State of the Environment Report from 2001 – 2004 should be consulted.

## WHAT IS A SoE REPORT?

A State of the Environment (SoE) report summarises the physical and social attributes of the Waverley environment whilst identifying the human impacts on our local environment in the 2005 – 2006 financial year. It also provides information on all of the activities conducted by Council and the community to protect and restore the Waverley environment.

Comparing SoE reports from year to year enables Council to see improvements and identify areas that need attention in all sectors of the local environment.

## TOWARD SUSTAINABILITY....

In partnership with our local community, Council has developed 31 sustainability indicators that best represent how the community want us to measure our progress toward environmental sustainability. By comparing our progress in these key areas from year to year, we can monitor Council's progress toward achieving our corporate goals of sustainability.

## COMMUNITY VALUES

Community consultation is an integral component of SoE reporting. To assist with the development of our SoE report, Council conducted a telephone survey of Waverley residents to explore their knowledge, attitudes, skills, and behaviours with respect to environmental protection.

These findings will not only assist Council with our reporting requirements but will also help us to develop suitably targeted environmental programs for our local residents.

Major environmental issues identified by our residents:

- Beach pollution
- Littering
- Rubbish dumping
- Motor vehicle emissions
- Bushland protection
- Increasing urban development
- Recycling
- Sewage discharge
- Stormwater pollution

## Key to Sustainability Indicators

↑	Positive movement toward sustainability
↓	Negative movement toward sustainability
↔	No progress toward sustainability
ND	Not determined



# Land

**The Waverley** Local Government Area (LGA) is located on Sydney's eastern seaboard, approximately seven kilometres from the central business district. It includes the localities of Bondi Junction, Queens Park, Bronte, Waverley, Bondi, North Bondi, Tamarama, Dover Heights and parts of Rose Bay. Waverley's position between the city and the sea is the key to its enormous attraction for residents and visitors. Waverley lies just south of the beautiful Sydney Harbour with its eastern boundary defined by the Tasman Sea. Dover Heights, arguably Waverley's most affluent suburb, enjoys views to the Harbour Bridge whilst the beachside suburbs of Bondi, Tamarama and Bronte, are amongst the most popular in Australia.

With an area of 9.3 square kilometres and a population density of 6524 people per square kilometre (sq. km.), Waverley is the most densely populated LGA in Australia after the City of Sydney. Despite our small area, Waverley boasts a rich and diverse mixture of residential, business and natural landscapes that attract local, regional and international visitors.

Since the 1850s, a greater appreciation of the scenic and recreational values within the Waverley area has seen a steady increase in both residential and commercial development over industrial land uses. An increase in development has brought with it extensive land degradation in the coastal zone from adverse impacts such as land clearing, destruction of native vegetation, introduction of exotic weed species, erosion and increased urban runoff.

In response to these pressures, Council continues to develop environmental strategies within our corporate planning documents, policies and environmental planning instruments that will ensure that these impacts are minimised and the state of our environment is preserved for present and future generations.

## PRESSURES ON OUR LAND

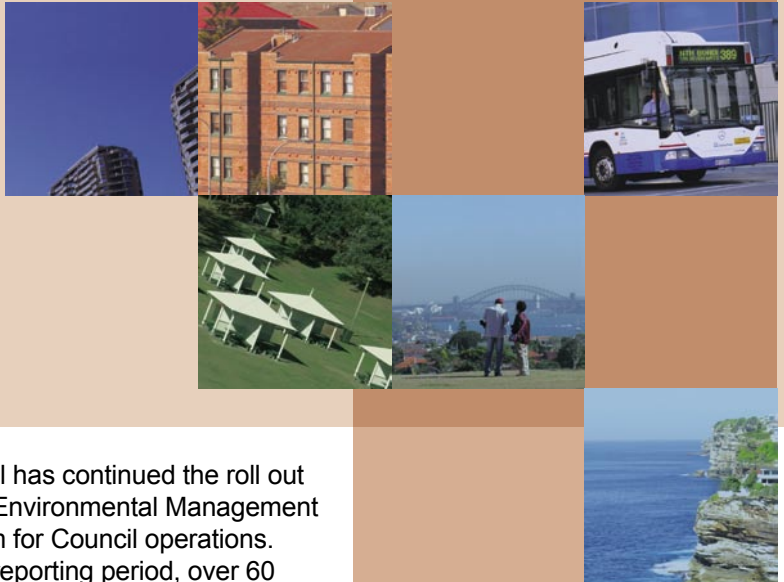
- Urban redevelopment
- Excessive land clearing
- Land degradation
- Contaminated sites
- Soil erosion
- Introduced species
- Visitation

## RESPONSES TO THESE PRESSURES

- The Bondi Junction Local Environment Plan (LEP) No 6 and draft Town Square Development Control Plan (DCP) were prepared in August 2005 and considered by Council in September 2005. The plans were placed on public exhibition in January 2006.
- Council has commissioned Connell Wagner to prepare the Comprehensive Bondi Junction LEP and DCP. The project brief includes objectives which require the integration of social and environmental strategies into planning controls. The draft Bondi Junction Comprehensive LEP will target land uses within the Bondi Junction Commercial Centre based on economic assessments undertaken as part of the development of the structure plan preparation.
- The Bronte Commercial Centre DCP was adopted as an interim policy in July 2005 pending the preparation of the Local Villages DCP and Public Domain Improvement Plan. The Macpherson Street / Lugar Street

## SUSTAINABILITY TRENDS

Environmental Indicator	01/02	02/03	03/04	04/05	05/06	Movement toward sustainability
Per capita of Open Space (ha)	0.0017	0.0017	0.0017	0.0017	0.0017	↔
Number of Development Applications approved by Council	929	1081	1011	1093	1020	↔



Bronte Village Public Domain Improvement Plan was adopted in April 2006 and tender documents drafted in June 2006.

- The Local Villages Project began in February 2006 and involves the preparation of a DCP and Public Domain Improvement Plan for all Waverley commercial centres. The project has completed a public consultation process and a draft DCP and PDIP are being prepared.
- The Hewlett Street Reserve improvements have been endorsed by Council and documented for quotation and construction. A contractor has been selected and is scheduled to commence construction works in early August 2006.
- The improvement works in the Public Place Action Plan have been implemented including the upgrading of the roundabout at Macpherson Street, Bronte; the upgrading of the bin casings in Charing Cross and Bondi Road; and the weed removal program. Further improvements will be incorporated to complement Council's strategic village enhancements.
- A range of best practice environmental policies have been reviewed and developed this year. These include the review of Council's corporate Environment Policy, development of an Asbestos Policy for the Waverley LGA, development of Council's Water Savings Action Plan, drafting the Integrated Total Water Management Policy, and the Bondi Junction Commercial Centre Planning Review.
- Council has continued the roll out of the Environmental Management System for Council operations. In the reporting period, over 60 environmental management plans have been developed for high environmental risk Council activities.
- The Waverley Strategic Plan, Council's roadmap for the future of Waverley, was developed in 2005 after extensive internal and external consultations. This involved active participation from staff, councillors, community groups, government departments, local business, residents and visitors.
- A high priority was given to improving our DA processing times during the 2005–2006 year. The ongoing success of Council's DA Fast Track team, and continual work on reviewing and improving development assessment processes and procedures, have contributed to the result for the year of an average process time of 57 days.
- As a result of the NSW Planning Reforms and a Department of Planning Circular in September 2005 it was necessary to consolidate all of Waverley Council's Development Control Plans into a single document and repeal DCPs which no longer have a planning role. The development of the Waverley DCP 2006 is continuing and exhibition is scheduled for September 2006.
- Darug People have expressed a traditional connection to country through a Registered Aboriginal Native Title Claim.

***A number of Capital Works projects have been completed throughout the year including:***

***Oxford Street West footpath and road upgrades***

***Bondi Beach Car Park access equipment***

***Bondi Baths accessibility assessment***

***Bondi Park high mast lighting***

***Bondi Pavilion disabled toilets and shower facilities***

***Bondi Pavilion balcony works***

***Seven Ways stage 1 traffic works***

***Waverley Park netball courts***

***Hunter Park Sculpture Garden Part 1***

***Refurbishment of offices in the Mill Hill Centre***

# Aquatic Systems

**Urban stormwater** is the untreated runoff from hard surfaces such as roofs, footpaths and roads. In a storm, stormwater flow is intercepted by engineered stormwater management systems that have replaced natural watercourses and streams over time. These management systems channel excess water away from urban areas to natural aquatic environments as a flood mitigation measure.

The Waverley LGA consists of nine stormwater sub-catchments that drain into three major receiving water bodies: Sydney Harbour, the Pacific Ocean and Lachlan Swamps in Centennial Parklands. Therefore, both the quantity and quality of stormwater generated within the catchment can have regional implications.

Human impacts within the catchment have increased the amount of litter, nutrients, bacteria, heavy metals and sediment being discharged into our receiving water bodies, thus degrading the quality of our local aquatic systems over time. In response to these pressures, Council continues to develop integrated water management programs that focus both on reducing the quantity of stormwater and improving water quality throughout the catchment. Integrated water management is a key corporate goal of Council.

## PRESSURES ON OUR AQUATIC SYSTEMS

- Bondi Sewage Treatment Plant (STP): problems due to lack of long term strategies to improve overall system capacity and water treatment capabilities.
- Ongoing environmental impacts from businesses.
- Vaucluse / Diamond Bay Diversion Scheme: untreated sewage is continuously discharged into the ocean from three cliff face outfalls, one of which is located within Waverley LGA at Diamond Bay.
- Pollution: 188 environmental pollution incidents were recorded within the reporting period.
- Sewer overflows: regular overflows from designed sewer overflow points throughout Waverley.
- Increased quantity of stormwater, increased development and reduction of pervious surfaces.
- Loss of biodiversity.

## SUSTAINABILITY TRENDS

Environmental Indicator	01/02	02/03	03/04	04/05	05/06	Movement towards sustainability
Total water consumption in Waverley (kL):						
Community	ND	6,228,058	6,842,007	ND	6,308,303	↑
Council	159,397	189,002	134,042	79,907	80,846	↑
Average compliance with EPA Beachwatch: Faecal Coliform	100%	100%	97%	97%	98%	↓
Average compliance with EPA Beachwatch: Enterococci	97%	100%	83%	100%	93%	↓
Number of pollution control devices (including trash racks and pit baskets)	60	80	96	96	96	↑



## RESPONSES TO THESE PRESSURES

- Since 1 July 2001, 2.42% of rate funds have been allocated to environmental programs. Expenditure of these funds is scheduled through Council's Integrated Stormwater Management Plan (ISMP), a five-year program of environmental works aimed at reducing the quantity and improving the quality of stormwater in Waverley.
- The ISMP also fulfils Council's commitment to implement our three EPA imposed Catchment Management Plans, the Southern Sydney Catchment Blueprint, and the 57 recommendations of the Bronte Catchment Citizens Jury. The plan provides the direction for Council to expend the environmental levy in a cost effective manner that will continually meet community expectations.
- To oversee the implementation of the Plan, Council has established the Officer Stormwater Working Party, an inter-departmental working group that meets on a monthly basis.
- To encourage public participation in the environmental decision making process, Council established the Community Stormwater Panel, a community reference group that oversees the implementation of stormwater projects in addition to the expenditure of the environmental levy.
- The Permanent Wave Business program was launched in the Bondi Junction catchment in May 2005. The program is a voluntary environmental assessment and education program focused on improving environmental performance of Waverley businesses. Initial audits of all businesses revealed that 71% of environmental targets set for businesses were accomplished.
- Waverley Council is committed to the protection of the environment and the continual improvement of the health and safety of our employees and the community. To achieve this we need to ensure that all Council activities have effective environmental management systems and operational procedures necessary to identify, monitor, mitigate, and improve our environmental impacts. In response, Council has developed an Environmental Management System to ensure the environmental impacts of our key areas are minimised. Since June 2005, 60 environmental management plans have been developed for high risk Council activities including resource recovery, maintenance and construction, and public place cleansing.
- In the reporting period, 118 Council staff participated in training in the environmental management system for Council operations. This represents a 45% increase in the previous year.

***“Human impacts within the catchment have increased the amount of litter, nutrients, bacteria, heavy metals, and sediment... degrading the quality of our local aquatic systems over time...”***

***“Council continues to develop integrated water management programs that focus both on reducing the quantity of stormwater and improving water quality throughout the catchment.”***



# Aquatic Systems

- In December 2005, Council launched an education campaign to reinforce Council's smoking ban on the beaches. The ban has significant environmental benefits including cleaner beaches, improved water quality, and reduced harm of sea life. The education campaign included signage, drain stencilling, beach education blitz days, and media coverage aimed at increasing awareness of the smoking ban amongst beach users, as well as establishing a social norm of no smoking on the beaches.
  - Council developed the Water Savings Action Plan in response to the NSW Department of Energy, Utilities and Sustainability (DEUS) mandatory requirements for local governments. The plan establishes a water reduction target of 201% by 2011, equating to over 31 million litres of water each year. 100% of the actions identified in the strategy for implementation were completed. Actions included the installation of water saving fixtures in coastal amenities, a waterless urinal trial at the Council Depot, and the installation of rainwater tanks in three childcare centres and one early childhood centre.
  - Council installed a 50,000 litre rainwater tank at the Council depot to be used for street sweeping, pit cleaning, street tree irrigation and graffiti removal.
  - Council was successful in obtaining a \$74,900 grant from the NSW Government's Water Savings Fund to enable sustainable groundwater use for irrigation at Waverley and Barracluff Parks. The project will ensure a 16,000 kL reduction in Council's potable water consumption.
  - Waverley Council is currently reviewing, updating and broadening the scope of Council's 'Stormwater Policy' in order to reflect best practice in total water cycle management at the local level. This will result in a revised policy and technical guidelines, compliant with relevant legislation and planning reforms, being integrated into Council's planning system and contributing towards high quality urban design, environmental and social sustainability outcomes.
  - Council's water consumption has been drastically reduced from 134,042 kL in 2004 to 80,846 kL in 2005, due to both the introduction of Level 2 water restrictions in June 2004 and Level 3 water restrictions in June 2005, and the implementation of water saving measures by Council. In this time, the Waverley community consumption was reduced by over 500,000 kL, a significant achievement.
- “Council's water consumption has been drastically reduced... due to the introduction of water restrictions and water saving measures by Council...”***
- Council has continued its Sustainable Schools program to provide support to local schools to achieve their mandatory School Environmental Management Plan reporting requirements. To date, seven Waverley schools have participated in the program involving the completion of an environmental audit, participation in an environmental plan writing workshop with teachers and parents, as well as an environmental performance for the students. In 2005, over 300 students participated in the program.
  - Waverley Council is participating in the National Parks Association Coast Keepers program to develop a state wide, on-line public database of fish species in our LGA. The database will be managed by the Department of Primary Industries and research will commence in 2007.
  - Council has resolved to support the Department of Primary Industries request to enter into a Joint Operational Agreement for the cooperative management of the Bronte to Coogee Aquatic Reserve. Management plan development will commence in early 2007.

# Air

**The Waverley area** is a densely populated urban environment located only seven kilometres from the Sydney CBD. Our proximity to the city makes us particularly vulnerable to the effects of air borne pollutants.

It is estimated that around 1.2 million tonnes of pollutants enter Sydney's air each year. Motor vehicles are responsible for 75% of these pollutants, with the remainder being attributed to industrial and domestic sources. Research has shown that due to Sydney's coastal location, coastal wind patterns transport air pollutants out to sea overnight and in the early morning. Afternoon sea breezes then transport these pollutants back onto land and concentrate it in the Sydney Basin.

Improving our local air quality has been a commitment of Council since the early 1990s when Council adopted the Waverley Local Air Quality Improvement Plan (LAIP) that set out strategies and targets to reduce air borne pollution in Waverley. In 2002, Council adopted the Waverley Greenhouse Gas Reduction Strategy to set future direction for air quality management and pollution reduction in Waverley.

Since the early 1990s, Council has continued to implement innovative air quality improvement programs such as trialing Compressed Natural Gas (CNG) in heavy and light fleet vehicles, incorporating two hybrid electric cars into our corporate fleet, developing a local action plan to reduce our greenhouse gas emissions, and placing a prohibition on the use of wood-fire heaters throughout the LGA. Waverley has also been one of the few Councils in Australia to complete the five milestones of the Cities for Climate Protection program aimed at reducing corporate and community greenhouse gas emissions.

**“... around 1.2 million tonnes of pollutants enter Sydney's air each year. Motor vehicles are responsible for 75% of these pollutants...”**

## SUSTAINABILITY TRENDS

Environmental Indicator	01/02	02/03	03/04	04/05	05/06	Movement towards Sustainability
Greenhouse gas emissions savings (tonnes of CO <sub>2</sub> ) from Council activities	3360	3037	3265	4898.2	14,976.4	↑
Total energy saved through Council initiated projects (kWh)	3,660,131	3,308,279	3,556,645	5,335,730	6,731,517	↑
Number of vehicle registrations in Waverley	29,314	29,870	30,874	31,322	32,128	↓
Number of resident trips made on public transport (patronage per day)						
■ Bus	ND	ND	ND	ND	21,680	ND
■ Train					12,419	
■ Ferry					2464	
■ Light Rail					111	
Total kilometres of cycleways in the LGA (km)	ND	ND	29.5	29.5	29.5	↔

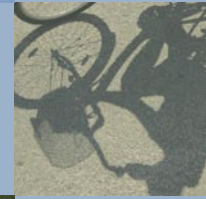
## PRESSURES ON OUR AIR

- Motor vehicle emissions
- Commercial business operations
- Wood-fire heaters
- Construction and demolition
- Pollution
- Global warming
- Bondi Sewage Treatment Plant

## RESPONSES TO THESE PRESSURES

- Waverley Council was the first Council in Australia to purchase Green Power for corporate energy uses. Council continues to purchase 25% of our energy requirements from alternative green energy sources (including solar, wind, hydro, and landfill gas) in five of our corporate buildings. These buildings include Council Chambers, the Library, the Depot, and Bondi Pavilion. This equates to a reduction of 928.4 tonnes / year through greenpower purchase.
- Council adopted the Waverley Transportation Policy in 2001. The policy is to direct sustainable transport management in Waverley to reduce negative impacts whilst improving residential quality of life and local amenity. Implemented programs for 2005 include the development of sustainable transport behaviour change initiatives with schools, the implementation of Council's inaugural Waverley Family Bike Fair, the installation of bike facilities at Bondi Junction and Bondi Beach, the allocation of four car parking spaces for car share operations, and the planning and consultation for the Waverley Greenlinks project to encourage walking and cycling throughout Waverley.
- Council completed the fifth and final milestone of the International Council for Local Environmental Initiatives (ICLEI) Cities for Climate Protection (CCP) in June 2005. Implemented programs include the introduction of new waste and vehicle management systems, a residential retrofit program, the Sustainable Schools program, a business environmental education program, and community education workshops, events, and programs. This equates to a saving of 14,976 tonnes of greenhouse gas emissions in the reporting period.
- In April 2006, Council signed up to the ICLEI CCP Plus program to continue to work towards achieving its local greenhouse gas reduction target. Participation in CCP Plus provides Council with technical support, access to CCP software and tools, and resource material. Council is currently completing the organisational review milestone and has been accepted into the CCP Plus Sustainable Transport Advancing Action project.
- Council's contribution to reducing greenhouse emissions from Council facilities was recognised in November 2005 by DEUS with a Gold award to Council for achieving its stated milestones.
- On 1 July 2004 the Department of Planning, Infrastructure, and Natural Resources (DIPNR) introduced the Building Sustainability Index (BASIX) as a mandatory part of the development assessment process. BASIX is a web-based application that assesses the potential performance of residential development against an established set of sustainability indices including greenhouse gas and energy consumption reduction. A BASIX certificate is a mandatory requirement for all new residential development in NSW and Council cannot issue development consent without the satisfaction of the DIPNR BASIX requirements. In 2006, BASIX was introduced for all residential multi-unit developments and for alterations and additions to dwellings valued at over \$100,000.

***“Council’s contribution to reducing greenhouse emissions from Council facilities was recognised in November 2005 by DEUS with a Gold award for achieving its stated milestones.”***



- Council joined the ICLEI Cities for Climate Protection (CCP) Program in 1998. CCP is an international program that motivates and empowers local governments throughout the world to reduce greenhouse gas emissions. Council was awarded Milestone 5 of the program in June 2005, signifying completion of the final stage in the CCP program and achievement of 20% of our corporate and community reduction target. In April 2006, Council signed up to the ICLEI CCP Plus program to continue to work towards achieving our local greenhouse reduction target.
- The Waverley Council Greenhouse Gas Reduction Strategy was introduced in May 2003 and is now monitored to ensure the objectives are being met. Greenhouse gas reductions of 77% and 61% have been achieved in Council's vehicle fleet and waste sectors respectively.
- Council continues to deliver our Sustainable Schools Challenge program that assists our local schools to reduce their overall natural resource consumption. Energy reduction is a key focus of the program. To date, seven Waverley schools are participants in the program.
- Council has adopted an Environmental Management System (EMS) for Council fleet vehicles. The EMS ensures the best possible environmental and economic practices are implemented with respect to the operation, maintenance and purchase of Council's vehicle fleet.
- Council is currently trialing four hybrid fleet vehicles (petrol/ electric motor engine) and monitoring the reduction in air pollutants discharged over time. To date, Council has three Toyota Prius and one Honda Civic Hybrid. Initial monitoring has indicated hybrid vehicles produce up to 90% fewer emissions than standard Council fleet vehicles.
- 16 trucks in the Resource Recovery collection fleet have been replaced with Hino vehicles. The Hino trucks have carbon monoxide exhaust reductions of 53% compared to the old trucks.
- In partnership with the Australian Greenhouse Office, Waverley Council is continuing to trial compressed natural gas trucks (CNG) as part of the vehicle fleet. Two additional compressed natural gas (CNG) trucks were purchased in 2004. Subsequent emission testing has revealed a 57% reduction in hydrocarbons, a 49% reduction in nitrous oxides, and a 93% reduction in fine particulate matter.
- The Southern Sydney Regional Organisation of Councils' (SSROC) Street Lighting Initiative (SLI) program successfully applied for \$4.2 million in funding under the NSW Government's Energy Savings Fund. Approximately \$80,000 will be spent in the Waverley LGA to install energy efficient street lighting.
- Council has introduced a mobile team of parking patrol officers on bicycles as an alternative to cars.

***"... Council is continuing to trial compressed natural gas trucks (CNG) as part of the vehicle fleet... emission testing has revealed a 57% reduction in hydrocarbons, a 49% reduction in nitrous oxides, and a 93% reduction in fine particulate matter."***



# Biodiversity

**Waverley** LGA boasts 112 hectares of open space covering 82 parks and reserves. Of this, 2.2 hectares is native remnant bushland in the active care of Council and the community. Other areas of remnant bushland that provide important refuges for native flora and fauna are located on private properties throughout Waverley.

In Waverley, the Eastern Suburbs Banksia Scrub is listed as an endangered ecological community under the *Threatened Species Conservation Act 1999*. This fragile site is located on the York Road boundary to Centennial Parklands and is under the ownership of Moriah College. Environment Australia and the National Parks and Wildlife Services are currently working with the school to rehabilitate this area. The wattle, *Acacia terminalis* ssp *termanalis*, is listed under the same legislation as an endangered coastal species. This rare plant is located in a coastal reserve on Loombah Cliffs in Dover Heights.

## PRESSURES ON OUR BIODIVERSITY

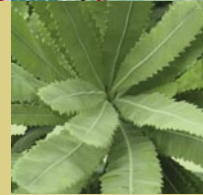
- Land clearing
- Companion animals
- Exotic plants spreading from private gardens
- Illegal tree removal
- Noxious weeds
- Stormwater pollution
- Feral animals

## RESPONSES TO THESE PRESSURES

- In the reporting period, the total number of volunteers involved in Council's Bushcare program increased by 15% from the previous year. Waverley's volunteer bushcare groups are located at Diamond Bay Reserve, Tamarama Park, Hugh Bamford Reserve, Calga Reserve, and Bronte Gully.
- Volunteers planted a total of 440 locally native plants in Waverley's reserves.
- National Tree Day was held on Sunday 30 July 2005 in Rodney Reserve, Dover Heights. 50 people attended the event and planted over 300 locally native trees, shrubs and groundcovers.
- Council's environmental levy funded further bush regeneration works in Gaerloch Reserve, which is located along the coastal walk between Bondi and Tamarama. The works started in 2004 and included weed removal, particularly Mirror Bush, slope stabilisation, mulching and planting of locally indigenous plants.

## SUSTAINABILITY TRENDS

Environmental Indicator	01/02	02/03	03/04	04/05	05/06	Movement toward sustainability
Area of Bushland in active care of Council and community (m <sup>2</sup> )	1094	1319	1843	2209	2243	↑
Number of native flora species identified in Waverley LGA	154	154	154	154	154	↔
Number of native fauna species identified in the Waverley LGA	93	93	93	93	93	↔



- The bush regeneration project in Bronte Gully, funded by a grant from the Australian Government's Envirofund, was completed in January 2006. This project included the removal of dense weeds and the stabilisation of an area on the steep northern bank of Bronte Gully. Over 800 locally native plants were also planted in this area by the group contracted by Council to undertake the work.
- Council continued to offer free community workshops throughout the reporting period in conjunction with the Eastern Suburbs Community College. Workshops included the popular "Gardening with Native Plants" and "Household Water Conservation". "Introductory Bushcare Training" was offered to bushcare volunteers in August 2005.
- The finalisation of the draft Tamarama Park Plan of Management was delayed to allow extended community consultation and investigation of building accommodation needs. Aboriginal Heritage Surveys were utilised in the development of this Plan of Management.
- The important work done by Council's volunteer Bushcare groups was promoted at several Council events, including World Environment Day and Seniors Information Day.
- Waverley Council joined with other Councils of the Inner West and South-East Sydney to integrate bushcare training. The new bushcare training is run by Ryde TAFE, and constitutes modules of the Certificate II in Natural Area Restoration.
- A team of professional bush regenerators was employed by Sydney Water to undertake weed removal works on the Hugh Bamford embankment above Military Road and to produce a weed management plan for the same area. Sydney Water was required by Council to fund these works in exchange for their temporary use of an area of Hugh Bamford Reserve .
- Council was successful in their application for a \$10,000 grant from the Sydney Metropolitan Catchment Management Authority to help reduce the Bitou Bush infestation in Diamond Bay.
- The project for the management, control and eradication of Alligator Weed (*Alternanthera philoxeroides*) and Ludwigia (*Ludwigia peruviana*) undertaken by Waverley Council in collaboration with Botany Bay Council, Canterbury Council, Rockdale Council, Strathfield Council, DEC and NPWS continued during the reporting period. Alligator Weed in Bronte Park was controlled by a contracted weed control company.

***"Waverley LGA boasts 112 hectares of open space covering 82 parks and reserves... 2.2 hectares is native remnant bushland in the active care of Council and the community... areas of remnant bushland that provide important refuges for native flora and fauna..."***



# Waste and Resource Recovery

**As people buy** and consume more products, the rate of waste generation increases. This general trend places pressures on the environment and Council's waste management systems.

People who visit, live in, or work in Waverley can reduce this impact by taking more responsibility for their waste. This involves actively avoiding waste generation, recycling more, and disposing of non-recyclable materials responsibly.

Council is constantly improving its capacity to handle waste more efficiently and to reduce its initial generation by implementing various corporate plans, strategies and education programs. Council recognises a large percentage of waste as a valuable resource and in response continually increases its efforts to divert waste from landfill by improving resource recovery throughout the LGA.

## PRESSURES ON OUR WASTE SYSTEM

- Population increases
- Littering
- Increasing generation of waste
- Reduction in the availability of landfill space
- Subsequent increase in landfill disposal costs
- Cost of managing negative environmental impacts from landfill sites eg. leachate
- Illegal dumping

## RESPONSES TO THESE PRESSURES

- Waste audits of abandoned waste and bins left on streets were undertaken by Bondi and Beaches staff and Regulatory Officers at least four times per week during the reporting period. This resulted in a marked improvement in businesses complying with waste presentation requirements.

- The Dumped Rubbish Action Strategy was reviewed and refined in October 2005. Implementation of the revised strategy was started at the end of November 2005 and continued until the end of February 2006. The strategy included additional collections during this period in streets within the Bondi basin area that were identified as being 'hotspots' for rubbish dumping. Regular waste audits were conducted and regulatory investigation and enforcement undertaken to support the program. The aim of the program was to reduce dumped rubbish issues and improve the aesthetic appearance of the streets during the high visitation time in summer months. A total of 137 tonnes of rubbish was collected from the Bondi basin area during the period.
- A waste audit on Bondi Beach targeting cigarette butts was undertaken by Council on 4 February 2006. An audit of a 4m<sup>2</sup> section of sand revealed six butts, down from 14 in 2005 and 61 in 2004. These reductions are attributed to Council's new beach rake, which has the capability to collect butts, as well as the smoking ban on the beach, and Council's associated education strategies.

## SUSTAINABILITY TRENDS

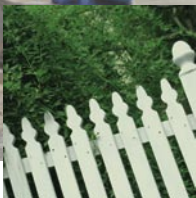
Environmental Indicator	01/02	02/03	03/04	04/05	05/06	Movement towards sustainability
Total tonnes waste to landfill (no recycling)	17,924	22,870	23,433	18,309	16,958	↑
Total tonnes waste diverted to recycling	6873	7351	7572.4	8394.7	10,493.9	↑
Tonnes of illegally dumped rubbish removed by Council	ND	ND	ND	ND	634.6	↔

***“Council recognises a large percentage of waste as a valuable resource and in response continually increases its efforts to divert waste from landfill...”***



- Over the reporting period, the Waverley community increased recycling by approximately 2000 tonnes per annum. There was a 20% increase in recycling, and an associated 20% reduction in household waste. Council initiatives and education will continue to provide avenues for additional recycling.
- The recycling program has been so successful that any further significant increase in recycling is reliant upon new technology at the recycling centres that would process additional material types.
- Clean Up Australia Day was held in March 2006, during which 400 local residents joined forces to clean up fourteen sites in the area, including Waverley's first underwater clean-up at Bondi.
- In December 2005, Council launched an education campaign to reinforce Council's smoking ban on the beaches. This campaign included signage, footpath stencilling, beach education blitz days, and media coverage aimed at increasing awareness and establishing a social norm of not smoking on the beaches.
- Information stalls were held by Council at the Bondi Junction markets in May 2006 for National Composting Week, and in June 2006 for World Environment Day. The World Environment Day stall included information displays and a recycling competition.
- Council held the first ever E-Waste collection day for Waverley on 17 June 2006. This involved collecting residents' unwanted electronic goods for recycling, and nearly four tonnes were collected.
- Council employs a full-time Waste Education Officer to coordinate and expand educational programs in the community, schools and daycare/childcare centres. Waste-related community workshops continued to be offered this year in partnership with the Eastern Suburbs Community College. School workshops were conducted through Council's Sustainable Schools Program. Workshop topics included Composting and Worm-Farming, and Green Cleaning.
- Council employs a full-time Waste Enforcement Officer, to regulate illegal rubbish dumping on footpaths, and bins being left on footpaths. In the reporting period, 3134 illegal rubbish dumps were reported and investigated, which led to the issuing of 32 Penalty Notices, 65 Clean Up Notices, six Local Government Orders, 77 Notices to Comply, and there were also 140 incidences where the dumper was contacted, educated and the waste removed.
- Council distributed personal ashtrays and other litter reduction educational materials during community festivals and stalls, such as World Environment Day in Oxford Street Mall in June 2006.
- Following Council's adoption of the Waste Avoidance and Resource Recovery (WARR) Policy in May 2004, Council has now completed the implementation of the new household collection system. Council continues to employ three Waste Audit Officers to educate residents about the new system.
- Council continued to participate in the SSROC Regional Recycling Contract with Visy Recycling, along with Marrickville and Rockdale Councils. This program funds recycling-related educational initiatives. These initiatives over the reporting period included the development of "Steel Can Steve", a character used in advertisements at Bondi Junction cinemas to encourage increased steel can recycling, as well as tours for the public to a local Materials Recycling Facility.
- Council supports the Chemical Clean-out program conducted by the Department of Environment and Conservation (formerly Resource NSW). The program promotes the periodic availability of local drop-off points for hazardous household substances.
- Council conducted an educational campaign over the Christmas period, targeting household recycling. The campaign involved advertising and public displays, and focused on the increased range of recyclable materials now collected by Council. The program was particularly targeted toward short-term residents and visitors.
- Council continued its education campaign for local businesses utilising Council's commercial waste and recycling collection services. This campaign works in coordination with the roll-out of the new collection system for domestic properties.
- The implementation of the public place recycling program in Bondi Junction was postponed to await the completion of the review of Council's Waste Avoidance Resource Recovery Action Plan in December 2006.

# Noise



**Noise pollution** can be defined as unwanted or offensive sounds that unreasonably intrude into our daily activities. It has many sources, most of which are associated with urban development such as roads, air, transport, industrial noise, neighbourhood and recreational noise. The impact of noise in our community can reduce public amenity, and adversely affect health and communication.

Noise pollution can cause a major reduction in the quality of life. However, some unavoidable activities, such as demolition, construction and excavation, are inherently noisy and need to be well managed rather than prevented.

The Department of Environment and Conservation (DEC), the NSW Police Service, and local councils all play a part in monitoring and regulating noise control.

## SUSTAINABILITY TRENDS

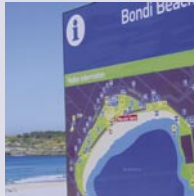
Environmental Indicator	01/02	02/03	03/04	04/05	05/06	Movement towards sustainability
Number of noise complaints	161	65	154	434	500	↓

## PRESSURES ON OUR ENVIRONMENT FROM NOISE

- Increasing population
- Barking dogs
- Traffic and transport
- House and car alarms
- Swimming pool pumps
- Mechanical ventilation systems
- Parties
- Public events
- Construction noise
- Garbage collection

## RESPONSES TO THESE PRESSURES

- A booklet, *Safe Summer in Bondi*, was used to distribute information about the Safe Summer in Bondi Campaign. Among other things, the booklet contained information on alcohol free zones, safe summer parties, and the noise complaint hotline. This booklet was widely distributed through cafes, shops, clubs, pubs, backpacker hostels, Waverley Library, Bondi Pavilion, Council Chambers, and a letter box drop to residents.
- Council requires a Noise Management Plan to be submitted for any proposed development with alcohol licensing approval. These plans reduce the noise impacts of such establishments on nearby residential areas.



- Between July 2005 and June 2006, Council received approximately 500 noise complaints. Council responded to these complaints by carrying out inspections and taking appropriate regulatory action. Most complaints were resolved at this stage, however non-compliance with regulatory notices led to some fines being issued.
- In the reporting period, approximately 350 of the total noise complaints were attributed to barking dogs as a result of insufficient space, provocation, lack of exercise or adequate shelter, ill health, or an unsuitable diet. The majority of these complaints were resolved through mediation and negotiation. However, in the case of ongoing problems, Notices of Intent to issue Nuisance Orders, and Dog Nuisance Orders were issued under the Companion Animals Act 1998.
- As a requirement of Council's Visitor Management Strategy, all Boarding Houses now have a Management Plan in place to mitigate potential noise impacts on nearby residents. Council's Visitor Management Strategy focuses on reducing the adverse impacts of visitors on the Waverley area.
- As part of the Noise Management Plan, Council is working closely with the police to mitigate noise pollution throughout the Waverley area. Council receives monthly reports from the police on noise-related complaints. The problem areas highlighted in these reports are targeted by Council and ongoing noise pollution prevented. Any residences receiving two or more noise complaints are visited by a Council officer and sent a letter of warning.
- In August 2005, Council entered into an agreement, or Accord, with local licensees, police, and the Department of Gaming and Racing to help prevent alcohol-related harm. Through this Accord, liquor licensees now have the opportunity to meet regularly with authorities and other stakeholders to develop holistic strategies to deal with local alcohol-related issues in the community.

***“The impact of noise in our community can reduce public amenity, and adversely affect health and communication...”***



# Aboriginal and non-Aboriginal Heritage

**Heritage is defined** as either a place, object, custom or culture that has historic, scientific, cultural, social, archaeological, aesthetic, natural or Aboriginal significance.

The Waverley Heritage Study conducted in 1994 identified over 400 items of either natural, built, or Aboriginal significance with an additional seven heritage conservation areas. To ensure their conservation and protection, each of these items was scheduled within the Waverley Local Environmental Plan 1996. Waverley LGA also has eight listings in the State Heritage Inventory under the Heritage Act 1977.

Waverley Council is committed to the protection and conservation of our Aboriginal heritage. In partnership with the NSW National Parks and Wildlife Service, Council is responsible for the protection, preservation and management of all Aboriginal relics throughout Waverley, irrespective of land tenure. Waverley LGA has nine Aboriginal Heritage sites recorded on the Aboriginal Sites Register under the *NSW National Parks and Wildlife Act, 1994*. These include rock engravings, camps, caves and midden sites.

The natural history of this area would support the existence of far more unknown or unlisted sites throughout the municipality.

## SUSTAINABILITY TRENDS

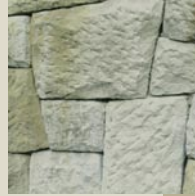
Environmental Indicator	01/02	02/03	03/04	04/05	05/06	Movement towards sustainability
Heritage items listed in Waverley LEP	432	432	432	432	432	↔
Number of traits listed on the NPWS Aboriginal Sites Register	9	209	209	209	209	↑

## PRESSURES ON OUR HERITAGE

- Recognised need to expand current heritage register
- Lack of enforceable maintenance provisions for listed sites
- Inappropriate infill development in heritage conservation areas
- Increased applications for on-site parking provisions within listed heritage areas
- Insufficient expertise in dealing with listed items
- Unrealistic expectations of floor space ratio applied to listed buildings
- Cultural change in favour of replacement rather than maintenance of built fabric
- Lack of understanding and recognition of Native Title rights and interests
- Erosion or damage of sites from wind, water, sun and human activities
- Private construction techniques in Bondi's sandy soils are not congenial to sifting for Aboriginal artefacts
- Environmental performance and access legislation

## RESPONSES TO THESE PRESSURES

- In the last year Council has finalised the Draft Waverley Heritage Assessment (DWHA). The aims of the DWHA are to identify and analyse the environmental heritage of the Waverley Local Government Area, and to make practical recommendations for its conservation. It recommends 189 proposed heritage items and 10 proposed heritage conservation areas. The DWHA was on public exhibition from 12 October 2005 to 8 February 2006.
- In order to assess submissions generated by the public consultation process, an independent Heritage Review Panel has been established. The panel consists of three members, namely:
  - one heritage architect;
  - one lawyer, and
  - one community representative.
 So far, five Heritage Review Panel meetings have taken place. The outcomes of the HRP meetings will be noted in a Council Report due in early 2007.



- Council offers a free heritage and urban planning advisory service to the public two days a week (Tuesdays and Fridays) to assess the impact of proposed development works on identified heritage sites. Where the impact is identified as excessive, applicants are required to address identified issues, engaging specialist heritage planners if needed.
- The Bondi Surf Pavilion was nominated by Council for the State Heritage Register.
- Council initiated the Heritage and Urban Design awards 2006 and will hold the event annually. The winners were announced on 7 April 2006 at Bronte House. The aim of this competition is to recognise and promote good design solutions that ensure that the significant qualities of heritage buildings and conservation areas are maintained and enhanced. The awards serve to encourage excellence in design and craftsmanship and also to promote community awareness of our heritage.
- Due to the significance of place, the Waverley area boasts 180 individual Aboriginal entries on the NPWS Aboriginal Sites register and 209 traits. These include rock engravings, middens, shelters with middens, shelters with art, open campsites, shelters with deposits, axe grinding grooves, burial sites, contact mission, and a historic place. It is also important to note that due to sea level rise around 10,000 years ago, it is estimated that hundreds of sites are located off the coast.
- An Aboriginal Cultural Heritage Assessment Report was conducted for Council for the proposed extension of the Bondi to Bronte Coastal Walk below Waverley Cemetery in November 2005. The report found no direct evidence of Aboriginal use of the study area, but did identify two areas of potential heritage sensitivity: Calga Reserve, and the sandstone coastal cliffs.
- Two significant archaeological sites located at Bondi depict past Aboriginal occupation of the Waverley area prior to European settlement. These comprise a large open campsite located during the 1890s in the sand dunes at the back of Bondi Beach and the extensive rock engravings at Bondi Golf Course / Williams Park. Artefacts that were relocated from the Bondi Beach middens to the Australian Museum in the 1930s are currently being identified.
- The Bondi to Bronte Interpretive Signage project was undertaken during the reporting period with extensive consultation of the La Parouse Land Council, who were part of the working group for the project. The sign now located in Gaerloch Reserve tells the story of the arrival of the Dharawal as told by a Dharawal Elder.

***“Heritage is defined as either a place, object, custom or culture that has historic, scientific, cultural, social, archaeological, aesthetic, natural or Aboriginal significance.”***



# Social



**To create** a sustainable community which meets the lifestyle needs of all its existing and new members requires careful planning so that accessible community services and facilities continue to support Waverley's rich social fabric. To do this, Council must ensure that planning processes and strategies contribute to the maintenance and improvement of our social, natural, and physical environments for everyone to enjoy.

Waverley Council is committed to delivering a high standard of strategic and social planning activities. Based on demographic profiles and needs analysis, we develop strategies and actions in response to priority issues and concerns. The details of Waverley's social planning process and action plan are integrated into the Waverley Strategic Plan which was finalised in December 2005. The plan is based on extensive consultations with a variety of residents, service providers, and consumers of services in our local community.

## PRESSURES ON OUR SOCIAL ENVIRONMENT

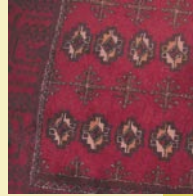
- Increase in aging population
- Housing affordability
- Lack of recreational facilities for young people
- Affordability of childcare services
- Crime
- Community safety

## RESPONSES TO THESE PRESSURES

- The continued implementation of Council's Community Safety Plan during the reporting period included:
  - the launch, promotion and distribution of the Bondi Junction Youth Protocol;
  - the implementation of a comprehensive campaign promoting safety in celebrations at Bondi Beach over Christmas/ New Year, and
  - the completion of a submission to the NSW Attorney General's Crime Prevention Division, seeking funds to implement a second year of projects under the Community Safety Plan. These funds were granted and the new project, targeting alcohol related crime and anti social behaviour across Waverley will commence in 2006–2007.

## SUSTAINABILITY TRENDS

Environmental Indicator	01/02	02/03	03/04	04/05	05/06	Movement towards sustainability
Number of affordable housing units	39	56	20	25	46	↓
Number of community volunteers participating in sustainable activities and related activities:						
– Community clean ups	ND	ND	96	105	400	↑
– Bushcare programs	69	105	106	106	86	↓
– Environmental Levy programs	535	859	297	1755	4778	↑
– Environmental Courses	ND	48	419	730	374	↓
Number of residents in precinct forums	392	354	1486	1107	1122	↓



- The public launch of the Bondi Junction Youth Protocol was held in Oxford St Mall after school on the afternoon of Thursday 26 July 2005. The protocol was launched by Councillor George Newhouse, Chair of the Bondi Junction Youth Safety Working Party, and attracted more than 200 people. A promotional mural is now on permanent display outside the Bus Rail Interchange, providing a strong visual representation of the protocol.
- Following its launch, the Bondi Junction Youth Protocol was sent to all local high schools and many local businesses. Council's Communications Officer implemented a press campaign, and presentations about the protocol were made to several youth interagencies. The protocol is on display and available in hard copy at all Council customer service outlets, and several other agencies in the area, including the police station. It is also available from Council's web site.
- A campaign promoting safety in celebrations at Bondi Beach over the Christmas/New Year period was implemented in December. The 2005 Safe Summer in Bondi campaign combined education (advertising campaign), enforcement (alcohol free zones) and environment (providing safe, alternative events for target groups) to manage crowds and alcohol consumption. Events included: Sunbeats with DJ Judge Jules at Bondi Pavilion on Christmas Day, and DJ Fatboy Slim at the Pavilion on New Year's Eve complemented by a family oriented event at Dudley Page Reserve.
- A booklet, *Safe Summer in Bondi*, provided an attractive means for distributing information about the Safe Summer in Bondi program. It included information about events for different groups, activities for kids, alcohol free zones, public transport, safe summer parties, surf safety, sun protection, traffic and road closure information, noise complaint hotline, emergency contact telephone numbers etc. The booklet was widely distributed through cafes, shops, clubs, pubs, backpacker hostels, Waverley Library, Bondi Pavilion, Council Chambers, and a letterbox drop to residents.
- The Waverley Strategic Plan (WSP) was adopted by Council in April 2006. The Plan was developed using a community planning model, after extensive internal and external consultations involving active participation from Council staff, councillors, community groups, government departments, local business, residents and visitors. The Strategic Plan redefines Council's vision, and guides our responses to the challenges and opportunities we will face over the next 12 years.
- Council continued to contribute to the Eastern Region Aboriginal and Torres Strait Islander Forum, and its annual Pauline McLeod Award for reconciliation. This year's award was presented to Peter Cooley and Blake Champion in recognition of his work with young people at a ceremony held during Reconciliation Week in May.

***“...a sustainable community which meets the lifestyle needs of all its existing and new members requires careful planning so that accessible community services and facilities continue to support Waverley's rich social fabric.”***



# Social



- Council celebrated NAIDOC Week (3–10 July 2005) with a number of events, including:
  - an exhibition of paintings at Waverley Library;
  - Boomalli Members Show – an exhibition of paintings and photographs at Bondi Pavilion;
  - Yidaki Didg and Dance in Australia – a free show, which also included indigenous painting workshops for children;
  - the lining of Oxford St Mall with banners featuring the work of Gordon Syron, a renowned contemporary Aboriginal Artist, and
  - activities were also held in the mall, including face painting, dot painting classes, story telling and indigenous cooking and taste testing.
- A series of events was organised for Refugee week in October. The Pavilion hosted: My family – Showing Diversity, a travelling photographic exhibition by young people portraying their families, and a series of paintings by Jeeva Chapman expressing concern for the plight of refugees. On 28 October comedian Hung Le, who came to Australia as a refugee, performed at the Eastern Suburbs Leagues Club, supported by the Solidarity Choir.
- The third annual Global Table Street Festival was held on 8 April 2006. On the day there were performances of music and dance presented by 11 cultural groups, and food representing nine cultural traditions. Young student chefs from the Sydney Institute of TAFE demonstrated the preparation of food from around the world. Council's childcare centres participated in the Global Table Street Festival with an information stall on children's services and a musical performance by children from Bronte ChildCare Centre.
- There were a total of eight programs for youth held at the Bondi Pavilion during the reporting period. These included:
  - the 2006 Waverley Council Youth Art Award and Exhibition, held over two weeks in June;
  - the 2006 grant funded Youth Wave Music Programs, and
  - the Musician in Residence programs, which continued to cater for youth and young emerging artists.
- Five Bondi Live Youth Music Project (BLYMP) events were held at Bondi Pavilion over the course of the year. The events provide a positive outlet for young bands with about six bands performing live to an audience of around 400 young people at each event. These events are organised by Council's Youth Worker, Pavilion staff, and Ways Youth Services with support from Waverley Police.
- As a part of Youth Week, Bondi Blitz was held next to the Bondi Skate Park on 8 April 2006. Organised in cooperation with WAYS, Woollahra and Randwick Councils, it involved a professional band, six youth bands, a DJ and a Rap group performing for around 1000 people throughout the afternoon.
- A total of 61 affordable and accessible cultural programs were held at Bondi Pavilion during the reporting period, including school holiday programs, after school pottery classes, music and arts projects, concerts and exhibitions.
- Council marked International Day of People with a Disability in December with a number of activities, including:
  - hosting a one day workshop, Advocating for Access 2005;
  - the SSROC dinner celebrating the work of the Access Committees of member Councils;
  - participating in the official launch of the NSW Government's campaign – Don't DIS my ABILITY, and
  - joining in Club Wild at the Opera House, an event organised by and for people with disabilities to celebrate creative expression through music, video and performance.



