

# WAVERLEY

[ *in focus* ]

SUMMER 2018/19

6 | YOUR BONDI SUMMER  
10 | Awarding our Community

4 | End of Year Highlights  
11 | Your Home. Your Say.



WAVERLEY  
COUNCIL

## COUNCIL CONTACTS

Customer Service Centre	9083 8000
Waverley Library	9083 8777
Bondi Pavilion	9083 8400
Waverley Cemetery	9083 8899
Mill Hill Community Centre	9083 8999
Bronte Early Education Centre	9083 8810
Gardiner Early Education Centre	9083 8830
Mill Hill Early Education Centre	9083 8902
Waverley Early Education Centre	9083 8800
Family Day Care	9083 8785
Waverley Community and Seniors Centre	9083 8900
Waverley-Woollahra Art School	9387 2461
Waverley-Woollahra SES	4251 6111

## PUBLICATION ENQUIRIES

*Waverley in Focus* is published by Waverley Council. If you have any enquiries or comments about the publication please contact us.

### Email

communications@waverley.nsw.gov.au

### Post

PO Box 9,  
Bondi Junction, NSW 1355

### Waverley Customer Service Centre

55 Spring Street, Bondi Junction

Open: Monday to Friday  
8.30am–5pm, Thursday until 7pm.

[waverley.nsw.gov.au](http://waverley.nsw.gov.au)

Front Cover:

*Waverley Lifeguards, Bondi Beach*

## YOUR WAVERLEY COUNCILLORS

### Bondi Ward



**Cr John Wakefield**  
Labor (Mayor)  
Ph: 9083 8130  
Mobile: 0427 023 987  
john.wakefield@waverley.nsw.gov.au



**Cr Dominic Wy Kanak**  
Greens (Deputy Mayor)  
Ph: 9083 8027  
Mobile: 0499 291 333  
dominic.kanak@waverley.nsw.gov.au



**Cr Leon Goltsman**  
Liberal  
Ph: 8006 2799  
leon.goltsman@waverley.nsw.gov.au

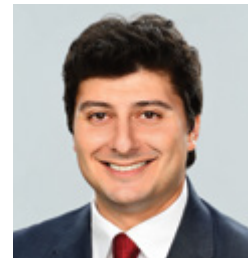
### Hunter Ward



**Cr Sally Betts**  
Liberal  
Ph: 9130 3250  
Mobile: 0425 363 530  
sally.betts@waverley.nsw.gov.au



**Cr Steven Lewis**  
Labor  
Ph: 9216 9898  
steven.lewis@waverley.nsw.gov.au



**Cr Will Nemes**  
Liberal  
Mobile: 0426 247 680  
will.nemes@waverley.nsw.gov.au

### Lawson Ward



**Cr Angela Burrill**  
Liberal  
Ph: 9114 8981  
angela.burrill@waverley.nsw.gov.au



**Cr Elaine Keenan**  
Greens  
Ph: 0468 498 085  
elaine.keenan@waverley.nsw.gov.au



**Cr Paula Masselos**  
Labor  
Mobile: 0419 292 207  
paula.masselos@waverley.nsw.gov.au

### Waverley Ward



**Cr Tony Kay**  
Liberal  
Ph: 9365 7707  
tony.kay@waverley.nsw.gov.au



**Cr George Copeland**  
Greens  
Mobile: 0499 944 545  
george.copeland@waverley.nsw.gov.au



**Cr Marjorie O'Neill**  
Labor  
Ph: 0407 363 102  
marjorie.oneill@waverley.nsw.gov.au



# “ A MESSAGE FROM THE MAYOR

## Merry Christmas and Happy Chanukah!

Since the last edition of Waverley in Focus it has been great to see many projects progress and completed as we move towards a better Waverley.

We improved pedestrian safety between Calga Reserved and the Coastal Walk (Bronte Cutting), by trialling the removal of 20 car spaces connecting the missing link of the existing footpath. This is a state road with a 40km/h speed limit and, up until recently, had included a large section without a footpath. On a typical off-peak weekend, around 5500 pedestrians a day walk through the Cutting compared to 585 cars – a ratio of nearly 10:1. The aim of this pilot project is to enhance the unique character of the Coastal Walk and establish a seamless pedestrian connection in Bronte Cutting.

We have joined 17 other NSW councils to sign a landmark agreement that will result in approximately 30% of our retail electricity being supplied by a renewable energy generator from 1 July 2019. The ground-breaking

contract will provide Waverley Council with renewable energy from the Moree Solar Farm Project until the end of 2030. Council's retail electricity needs will be met through regular grid electricity by Origin Energy for at least the next three years. Around 440,000 MWh of renewable energy will be supplied to the 18 councils over the life of agreement.

---

After a detailed design phase, and a 12-month construction program delivered on-time, the walk has now reopened for the community to enjoy again.

---

We reached a milestone in the Bondi Memorial Project, after Council endorsed Tamarama's Marks Park as the next site for a public artwork in Waverley. This endorsement allows for the commissioning of a memorial in the form of a public artwork in the park to acknowledge the men targeted in homophobic attacks from the 1970s to 1990s.

It's taken too long in recognising these terrible events from our not-so-distant past and I'm glad we will

soon have a permanent reminder by which we can pay respect to these men, their families, friends and the LGBTI community.

And of course, one of our biggest achievements was the reopening of the Waverley Cemetery Coastal Walk. Wild storms in June 2016 forced the closure of the world-famous Coastal Walk and parts of the Cemetery, which has now been remediated to withstand any future storms. The cemetery landslip and coastal walk restoration works cost \$4.26 million and has restored the structural integrity of the site. After a detailed design phase, and a 12-month construction program delivered on-time, the walk has now reopened for the community to enjoy again.

I wish you and yours best wishes for this holiday season.

**John Wakefield,**  
Mayor of Waverley

# END OF YEAR SNAPSHOT



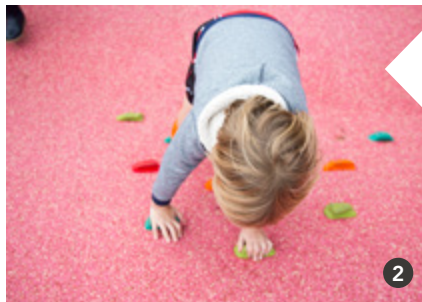
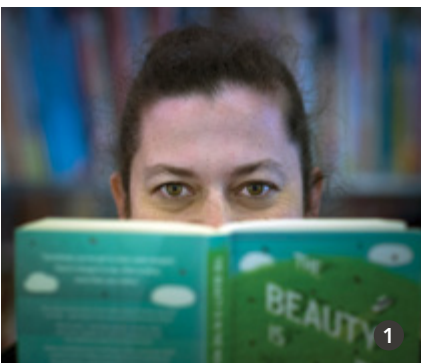
For the *Waverley Community Strategic Plan*, you told us what you wanted Council's main priorities and aspirations for the future to do. Over the past few months, we have used this feedback to address a broad range of topics relevant to the whole community.

Below is a snapshot of what has been achieved against the Community Strategic Plan themes.

## Arts and Culture

**You said:** The library is highly valued, for its programs and for providing community connections.

**Highlight achievement:** We joined *Renew Our Libraries*, an advocacy initiative uniting councils, public libraries, and their supporters in a grassroots effort to demand action and funding commitments from all political parties in the lead up to the 2019 NSW State Election.



## Recreation and Open Spaces

**You said:** The beaches and parks are highly valued.

**Highlight achievement:** We upgraded Stephen Street Reserve, with the installation of new playground equipment, soft fall and landscaping upgrades comprising of sandstone feature elements, trees, herbs and turf. Bronte Park picnic shelters were also replaced and refurbished.

## Local Economy

**You said:** Foster tourism through tourist information, eco-tourism, a diverse night-time economy and improved service and food offerings. Too much focus in tourism is leading to more traffic congestion.

**Highlight achievement:** We have taken a sustainable and considered position on tourism through the release of both our *Draft Waverley Sustainable Visitation Strategy*, and *Draft Creative Lighting Strategy*. With these plans, Council aims to implement and test new ideas to create a more vibrant, safe and active night-time. The installations of lighting projects – the *Heart of Bondi* at Oxford Street Mall and the Coastal Walk at Notts Avenue have been integral to this plan.

## Community Services and Well-being

**You said:** Foster support for young people and families.

**Highlight achievement:** Council has facilitated parenting seminars and interactive workshops on a range of topics, including water safety, cyber bullying, behaviour management, and language development. In partnership with NSW Health, we also ran youth mental health first aid programs to equip sports clubs, youth workers and the general community with the knowledge and skills to confidently respond to a young person experiencing mental health issues.



## Planning, Development and Heritage

**You said:** Avoid further high rise development and overdevelopment in general.

**Highlight achievement:** Council recently refused a request to prepare a Planning Proposal at 122 Bronte Road. The proposal sought an increase in height from 15m to 28m and Floor Space Ratio (FSR) from 2:1 to 5:1. The request was not supported as the scale of the development was deemed to be significantly out of character with the surrounding area.

## Transport, Pedestrians and Parking

**You said:** Concern about inadequate parking is a major issue, including requests for improved access and free parking for residents.

**Highlight achievement:** We made some significant changes including removing the fee for the first Residential Parking Permit and switching off parking meters in the Bondi Junction commercial area at 6pm each night. More information about the full suite of parking reforms is available on our website [waverley.nsw.gov.au/residents/parking](http://waverley.nsw.gov.au/residents/parking)

## Sustainable Environment

**You said:** Undertake initiatives to promote a clean green local area with a holistic approach encompassing the effects of climate change.

**Highlight achievement:** Our Building Futures program has worked with 10 large apartment buildings in Bondi Junction to significantly reduce their greenhouse gas emissions and the amount of water and waste they generate. Also, Council recently signed a contract to allow for approximately 30% of our electricity to come from a solar farm in Moree.

## Sustainable Waste

**You said:** Improve collection of green waste and encourage and facilitate composting.

**Highlight achievement:** Through the Compost Revolution program, in the last year, Council has distributed almost 500 subsidised worm farms and compost bins to reduce the amount of food waste going to landfill.

Council's red bin waste is now processed using a mechanical bioreactor treatment (MBT) where around 50% of the waste is converted into a compost product.

## Corporate Leadership and Engagement

**You said:** Introduce more opportunities to engage with Council and to access information.

**Highlight achievement:** Over the last few months we have had more than 50 community members speak at Council Meetings, Council Meetings; Operations and Community Services Committee Meetings; and Strategic Planning and Development Committee Meetings are now live streamed, allowing the community more opportunities to engage with Council.

## Knowledge and Innovation

**You said:** Foster digital innovation.

**Highlight achievement:** We are in the early stages of investigating an exciting opportunity to create a leading knowledge and innovation hub at the Boot Factory site in the centre of Bondi Junction. Waverley Library members are now also able to borrow iPads to take home.

*Images: 1. Your feedback held Waverley Library at high value. 2. Child enjoying the upgraded Stephen Street Reserve. 3. Our local Elsa Dixon Aboriginal Employment Program Trainees. 4. Around 30% of our electricity comes from solar.*



# YOUR BONDI SUMMER

We all love summer. It means more time on the beach, in the surf and outside in the sun.

We want to make sure you're safe this summer by sharing our lifeguards' key tips when visiting the beach.

Our lifeguards are on duty between 6am and 7pm all summer across Bondi and Bronte beaches. Tamarama beach is monitored 8.30am–7pm all summer. Make sure you are careful when swimming outside the patrolled times.

## Swim between the red and yellow flags

We hear it all the time, but it really is the most important message for beach goers. Our lifeguards assess the water conditions and put the red and yellow swimming flags up in the best swimming areas.

You may think the calm spot next to the flags is safe too, but it may be a rip.

## Know your rip

A rip is a strong jet of water that quickly flows away from shore. Swimmers who are caught in rips can get sucked away from safety at speeds of nearly three meters per second—far too fast for you to try swimming back to the beach. Knowing how to look out for a rip, particularly when the lifeguards aren't on duty, could potentially save your life.

- One of the best visual identifiers of a rip is to look out for gaps between the waves. The calmer gap between waves may look safe, but a small patch of calm water in an otherwise choppy sea is often a rip.
- Look out for discoloured water near the shore. Rips tend to drag large amounts of sand and sediment back out to sea with them.
- Rips are also common in areas next to sand bars.

## What to do if you get caught in a rip

1. Try not to panic!
2. Put your hand up if the lifeguards are on patrol. This will indicate you need help.
3. Float with the current, don't swim against it.
4. When the rip slows, stay calm, float toward the sand bar or breaking waves.

## Slip, stop, slap and wrap

Sadly, approximately two in three Australians will be diagnosed with skin cancer by the time they are 70, with more than 750,000 people treated for one or more non-melanoma skin cancers in Australia each year. In Australia the majority of skin cancers are caused by exposure to the sun.

So it goes without saying that when you're heading to the beach this summer you should slip on a shirt, slop on your sunscreen (and reapply it regularly), slap on your hat and wrap on your sunglasses.

## Lifeguards Top Tips



Always swim between the red and yellow flags. No flags, no swim!



Read the safety signs



Ask a lifeguard or lifesaver for safety advice



If you need help, stay calm and attract attention



If in doubt don't go out!

## When in doubt, ask the Lifesavers or Lifeguards

As well as Council lifeguards, volunteer lifesavers are there to help you. When you're at the beach, if you're unsure about anything, please talk to them or if in the water and feeling like you need help, raise your hand immediately. In the Waverley area we have four surf lifesaving clubs – Bondi, Bronte, North Bondi, and Tamarama. Council is custodian of each surf club building, and it is due to the work of our lifeguards and the lifesavers that many people are rescued each year. To join a club, or to view their events and activities, please head to their respective websites.

## Thank you *Bondi Rescue*

Waverley Council recently received a thank you letter from John Wolstenholme, from Hampshire England. On 3 August 2018, John and his two children aged eight and six, went to a local beach called Hill Head for the day. Whilst sitting on the beach John noticed two boys who looked like they were in trouble about 15 metres offshore, a few seconds later they started shouting for help.

After watching *Bondi Rescue* and knowing how to look for rips, John was able to assess the situation. John left his children on the shore and swam to the boys and was able to bring them in to safety.

### John said:

*'It's a small beach with several dozen people around, but no-one seemed to engage with what was happening even though they were only a few feet away. Once I understood that they weren't messing around I worked out what was happening, how the situation had developed (a rip and dropping off a ridge) and the best way of dealing with it; all things I had learned from you guys watching you deal with rescues. In short, there's a little boy alive in England all because of the programmes you make out there. I wanted you to know that along with all the humour and lightness of the programmes, the more serious side can save lives. Well done – you do a fantastic job.'*

Thank you to John for sending this letter and for having the courage to save a life on an unpatrolled beach. We love hearing how *Bondi Rescue* helps people understand the importance of surf safety.

And a huge thank you to our boys and girls in blue who work hard to ensure the safety of visitors to our beautiful beaches day in, day out. Waverley is a safer place because of their hard work and dedication.

## Holidays in Waverley

### It's festive season in Waverley!

Join us for a night of singing and cheer at this year's Carols by the Sea on Wednesday 12 December, 4.30 – 8pm at Bondi Park. Visit our beautiful Christmas Tree and Menorah and visit the shops participating in our Christmas Window Competition!

We also invite you to bring in the new year at Dudley Page Reserve, with spectacular views of the harbour fireworks and a family friendly environment, it's not to be missed.

Find out more at [waverley.nsw.gov.au/holidaysinwaverley](http://waverley.nsw.gov.au/holidaysinwaverley)

## Holiday Operating Hours

Our Customer Service Centre and Library will close at 3pm on Christmas Eve, reopen on Thursday 27 and Friday 28 December, close from 29 December – 1 January and then return to normal hours on Wednesday 2 January.

Waverley Council Chambers is closed from Monday 24 December to Tuesday 1 January, as is the Mill Hill Community Centre.

You will also be able to get in touch with us out of hours via 9083 8000, and emergency requests will be attended to.

More information about after-hours contact points are available on the Contact Us page on our website.

---

For the full list of locations and operating hours please head [waverley.nsw.gov.au/holidaysinwaverley](http://waverley.nsw.gov.au/holidaysinwaverley)

---



# WAVERLEY NOW



## Cemetery Coastal Walk Reopening

Wild storms in June 2016 forced the closure of the world-famous coastal walk and parts of the Cemetery which has now been remediated to withstand any future storm events.

The Cemetery landslip and coastal walk restoration works cost \$4.26 million and has restored the structural integrity of the site. After a detailed design phase, and a 12-month construction program delivered on-time, the walk has now reopened for the community to enjoy again.

We'd like to thank the community for their patience during this major project which has been one of the Council's most difficult and significant to date.

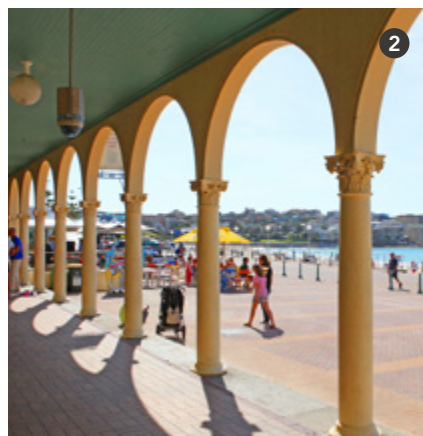
On Saturday 13 October, we celebrated the official reopening with musical entertainment from Bondi Brass and the Eastern Sydney Symphony Orchestra. Special thanks to all who attended.

## Bondi Pavilion Concept Design

In September 2018, Council voted to ask the community for feedback on the new Concept Design for Bondi Pavilion. The consultation was open between 7 September and 5 October 2018, with an online survey and information session held at the Pavilion on Saturday 22 September.

All feedback received was summarised in a report to Council. The report was considered at the November Council Meeting and a revised concept design was endorsed to go to detailed design. Thank you to those who provided feedback.

For more information about the consultation, and outcomes of the November Council Report head to [waverley.nsw.gov.au/bondipavilion](http://waverley.nsw.gov.au/bondipavilion)



## Bronte Picnic Shelters Repairs Complete

For the past few months we've been repairing 22 picnic shelters in Bronte to ensure they're in tip top shape for the summer season.

The refurbishment works included like for like replacement of five new picnic shelters, repainting surfaces, replacing damaged roof structures, partition walls and picnic table posts, extending the concrete padding around the shelters and pressure washing to remove surface contaminants.

Go and check them out if you haven't already!

Visit our Projects page on Council's website for updates on what we are doing in your local area [waverley.nsw.gov.au/building/current\\_projects](http://waverley.nsw.gov.au/building/current_projects)

*Images: 1. Cemetery Coastal Walk reopened after extensive restoration work. 2. Your feedback has been received for the new Bondi Pavilion concept design. 3. Bronte picnic shelters are back in action after being repaired.*





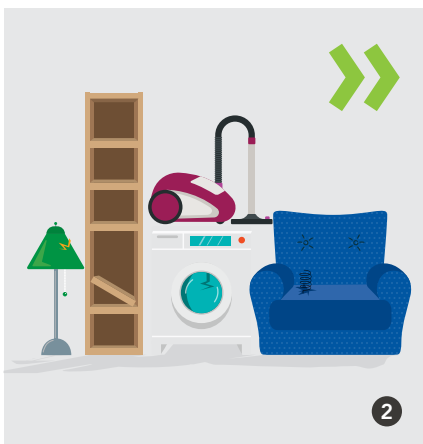
# SUSTAINABILITY

## Solar my School Wins

The 3-Council (Randwick, Waverley and Woollahra) *Solar my School* program has received recognition in several prestigious sustainability awards: Banksia Sustainability Awards, Cities Power Partner Awards, and NSW Green Globe Awards for Climate Change Leadership. From start to finish, this initiative provides support for local schools who want to power their buildings with sunshine and educate students about clean energy.

Thanks to participating schools – including Bondi Public, Waverley College, Moriah College, Waverley Public, Bronte Public and St Catherine’s – for showing community leadership on climate change action.

For more information visit [solarmyschool.org.au](http://solarmyschool.org.au)



## Grow it Local – Calling All Local Food Growers!

We’ve partnered with the team behind award-winning Garage Sale Trail to launch Grow it Local. This Eastern Suburbs pilot aims to increase participation in edible gardening, shine a light on existing growers, connect communities, share knowledge and help reduce carbon emissions relating to food transport.

For the green thumbs (and aspiring ones): there will be great opportunities to share your garden secrets and troubles, connect and learn from others, showcase your edibles and even win awards!

Put your patch on the map at [growitlocal.com](http://growitlocal.com)



## Help Us Nab Illegal Dumpers This Summer

Kerbside piles of household rubbish are costly to clean up, inconvenient and a blight on our stunning natural surroundings. Extra patrols throughout the summer will aim to nab illegal dumpers and you can help. Sharing photos, locations and information about incidents on [ridonline.epa.nsw.gov.au](http://ridonline.epa.nsw.gov.au) to help our investigators provide targeted responses. These include clean up notices and fines if necessary, as well as education about free and convenient disposal alternatives.

## Saving Water At Waverley Park

We are excited to announce our water harvesting system at Waverley Park has been upgraded! The groundwater seepage captured by the system will be used to irrigate Waverley Oval, sports fields, gardens as well as flushing toilets at Council’s Margaret Whitlam Recreation Centre.

The upgrade will save seven million litres of drinking water each year, enough water to fill three standard Olympic-sized swimming pools! It will also improve water security in times of drought.

## Plastic Free Bondi

In Australia, plastic drink containers and takeaway food packaging make up more than half of the litter found along our beaches, parks and neighbourhoods. So, Bondi is changing the way it eats!

Plastic Free Bondi is a community movement, driven by a dedicated team of locals. Their mission is to inspire, support and empower both businesses and individuals to take everyday actions toward reducing the use of single-use plastic packaging in our everyday life.

For more information visit [plasticfreebondi.org](http://plasticfreebondi.org)



Images: **1.** Bronte Public School participating in Solar my School. **2.** Help us curb kerbside dumping.

# AWARDING OUR COMMUNITY



## 2018 Mark and Evette Moran Nib Literary Award Winners Announced

Waverley Council is excited to announce the winner of the 2018 Mark and Evette Moran Nib Literary Award, which celebrates excellence in research and writing in Australia.

The 2018 winners across four categories are:

### Mark and Evette Moran Nib Literary Award (\$20,000)

**Helen Lewis**  
**The Dead Still Cry Out**  
*Text Publishing*

### Nib Military History Prize (\$3000)

**Ben McKelvey (Bondi local)**  
**The Commando**  
*Hachette Australia*

### Alex Buzo Shortlist Prize (six prizes of \$1000 each)

**Roger Averill**  
**Relatively Famous**  
*Transit Lounge*

**Tanya Bretherton**  
**The Suitcase Baby**  
*Hachette Australia*

**Sarah Krasnostein**  
**The Trauma Cleaner: One Woman's Extraordinary Life in Death, Decay & Disaster**  
*Text Publishing*

**Bri Lee**  
**Eggshell Skull**  
*Allen & Unwin*

**Helen Lewis**  
**The Dead Still Cry Out**  
*Text Publishing*

**Charles Massy**  
**Call of the Reed Warbler**  
*The University of Queensland Press*

### Nib People's Choice Prize (\$1000)

**Bri Lee**  
**Eggshell Skull**  
*Allen & Unwin*

The Mark and Evette Moran Nib Literary Award is presented annually by Waverley Council with the support of Principal Sponsors Mark and Evette Moran and the generous assistance of our community partners; Friends of Waverley Library (FOWL), Gertrude and Alice Bookshop and Cafe, Mark Moran Vaucluse; and Bondi Junction, North Bondi, and Rose Bay RSL Sub-Branches.

*Images: 1. Mark and Evette Moran Nib Literary Award winner, Helen Lewis with her prize winning book. 2. Nib Award winners with Mayor John Wakefield and Mark and Evette Moran.*

*Page 11: 3. Succulent heaven at Charingfield Aged Care Hostel. 4. Tamarah Tossey's innovative pot plant wall. 5. Bronte Public School's thriving veggie patch. 6. Elizabeth Dickson and her beautiful garden.*





## Waverley Garden Awards

Winners of the Waverley Garden Awards were announced in November. There was an extremely high caliber of entrants across all of the categories. The winners were:

### My Beautiful Garden:

Whatever style of garden, this award is for garden lovers at large. Formal or informal the overall effect is WOW.

Winner: **Susan 'Poppy' MacDonald**

### Innovative Gardens:

Something different! Your garden might have a native habitat or a great fruit and veggie patch, it's a challenging space, a terrace, indoor, balcony or vertical gardens.

Winner: **James Middleton**

**Special Street Gardens Winner:**  
**8 Francis Street, Bondi**

**Special Shared Gardens Winner:**  
**Waverley Community Garden**

### Dirt Kids:

Recognising that kids can be great gardeners, too! Open to individuals and groups (under 18 years), including any type of garden within childcare centres, preschool and all local primary and high schools.

Winner: **Bondi Public School**

**2018 Mayor's Awards categories:**

### Living Connections Award

Winner: **James Middleton**

### Second Nature Award

Winner: **Bronte Public School**

### Caring Community Award

Winners: **Charingfield Aged Care Hostel** and **Rose Bay Secondary College.**

## Local Hero and Best of the Best Awards

Know someone who works selflessly for the community? Someone who stands out because of their community work, generosity and commitment to others? Each year Waverley Council recognises people in our community who are passionate and dedicated to making a difference, those who make Waverley a special place to live.

Waverley Council's Local Hero Awards recognises contributions from people to community services, arts and culture, sports and recreation, the environment, volunteering and young people.

In 2019, we are also awarding our Best of the Best Award which recognises lifelong, outstanding community service. The Best of the Best Award recipient will receive a plaque at Bondi or Bronte beach on the Recognising Our Community Leaders Walk. This award is also open for public nominations.

Nominations for the awards will close late February 2019.

To find out more information please contact Council's Local Connections Coordinator on 9083 8916 or by emailing [connected@waverley.nsw.gov.au](mailto:connected@waverley.nsw.gov.au).

More information can be found on Council's website [waverley.nsw.gov.au/localhero](http://waverley.nsw.gov.au/localhero)



For more winners, runners ups and finalists go to [waverley.nsw.gov.au/gardenawards](http://waverley.nsw.gov.au/gardenawards)



# YOUR HOME. YOUR SAY.



This year we hosted over 40 community consultations via [haveyoursay.waverley.nsw.gov.au](https://haveyoursay.waverley.nsw.gov.au), our online community engagement website.

We asked you to tell us your thoughts on a variety of initiatives, from policies, strategies and plans, to developments, service reviews and park and facility upgrades. Over 2000 people took the opportunity to get in touch!

You shared your vision for Waverley and gave us your thoughts on the challenges and opportunities facing our community, which informed our new *Community Strategic Plan*. You



fed into our first *Creative Lighting Strategy* and *Sustainable Visitation Strategy*. We also heard from you when reviewing parking fees, beach safety, tree management and a number of public place improvement projects, including the Bondi Pavilion Restoration and Conservation Project.

If you're interested in having your voice heard, head to [haveyoursay.waverley.nsw.gov.au](https://haveyoursay.waverley.nsw.gov.au) to see what's on consultation and register to receive updates.

It's easy – you can give us your feedback online, in our forums, surveys and quick polls. We want to hear from you!



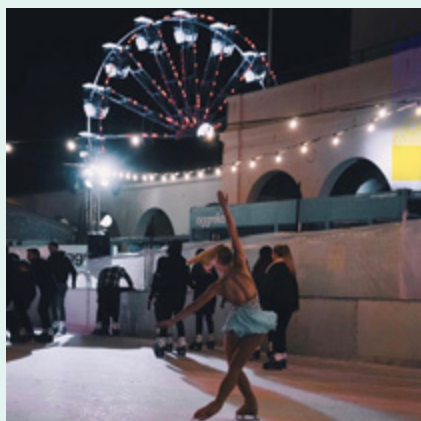
We love being tagged or mentioned in your photos when you're out and about. Here's a few of our favourites from the past few months.

Snapped by you!



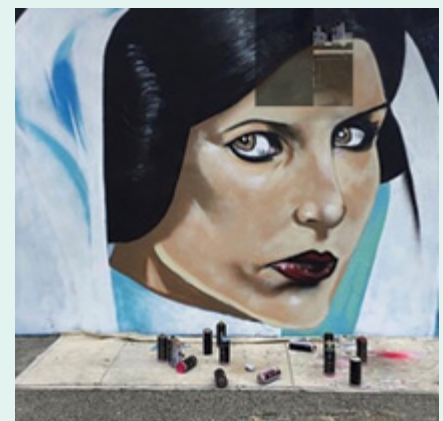
[our.family.travel.diary](https://www.instagram.com/our.family.travel.diary)

Missy is playing in one of the two ocean pools at North Bondi. #NorthBondi



[Madalyncherry](https://www.instagram.com/Madalyncherry)

Twirling under the #bondieye



[sb\\_illustration](https://www.instagram.com/sb_illustration)

Hard to believe it's been one whole year today since I featured on the Bondi Sea Wall for the first - but not the last - time.



## Consultation Highlight

### Factory Reboot Youth Summit

Waverley Council is investigating an exciting opportunity to create a leading knowledge and innovation hub at the Boot Factory site in the centre of Bondi Junction.

On Saturday 22 September, the Library hosted an event for 12 to 17 year olds to give this age group a voice on the proposed future activation of the Boot Factory. Factory Reboot – Makers and Creators Shaping the Boot Factory was attended by approximately 40 young people who visited interactive stations introducing

them to playdough circuits, ozobots, makey makey invention kits and more. Representatives from Young Engineers were onsite running hands-on workshops teaching attendees to code large Lego robots to complete simple tasks.

The aim of these activities was to inspire the group to generate ideas for the future use of the building in Bondi Junction with a focus on science, technology, engineering, arts and maths.

The data gathered from the day will complement information contributed by knowledge and innovation practitioners, academics

and community members to ensure a best practice space that will foster creativity, innovation and be mindful of social inclusion and social justice principles.

## Coming up

### Comprehensive Local Planning Review

Council is embarking on an important strategic planning project that will involve the development of a new piece of legislation – the *Waverley Local Strategic Planning Statement (WLSPS)*, as well as the comprehensive review of the *Waverley Local Environmental Plan 2012 (WLEP)* and *Waverley Development Control Plan 2012 (WDCP)*.

The review will be a three-year process, which will consist of a number of stages and Council will seek input from the community throughout the project.

Never miss an opportunity to have your say by registering for updates at **haveyoursay.waverley.nsw.gov.au**



*Images: 1. Have your voice heard by visiting our haveyoursay.waverley.nsw.gov.au. 2. The historic Boot Factory.*

Next time you're out and about in Waverley tag us @waverleycouncil



### like.minded

We made a pledge with @waverleycouncil to #secondnature and scored these water bottles.



### Shootwithscope

Festival of the Winds · That time when I imagined a dolphin swimming towards the sun. #festivalofthewinds



### themusicsuiteau

Day 3 of our Roosters themed studio... kids came in bouncing... #waverleycouncil

# DID YOU KNOW?



are paying by Eftpos or Credit Card you can simply scan the QR code on the rates notice and tap or insert your card to pay the outstanding amount shown. You will receive a receipt and you can also change the amount that you wish to pay.

---

Other payment options are available on our website at [waverley.nsw.gov.au/council/payments/rates#how](https://waverley.nsw.gov.au/council/payments/rates#how)

---



## Parking Permits

Did you know that Council offers different types of Parking Permits in addition to the Residential and Beach Permits?

### Carers Parking Permit

Carers Parking Permits are designed to support members of our community who rely on a carer for support in their day-to-day life. Residents in a Residential Parking Scheme (RPS) area can apply for a 12-month permit for their carer for a discounted annual fee of \$50.

### Daily Visitor Permits

Daily Visitor Permits enable eligible householders within a Residential Parking Scheme (RPS) area to provide daily parking to their visitors and guests. Permits are sold in packs of ten for \$22.50 and are valid for the one day that has been scratched, up until 9am the following day. The number of available permits per household is dependent on the parking capacity in the RPS area.

### Tradesperson Parking Permit

A Tradesperson Parking Permit is designed to assist residents when they are having work completed at their property. Residents may apply for a 7 day permit for \$90 on behalf of a trade vehicle that is not registered to the property. This permit is in addition to the normal allocation of permits per property.

---

Information on these permits and on eligibility is available on the Council website at [waverley.nsw.gov.au/parking](https://waverley.nsw.gov.au/parking) or by calling the Customer Service Centre on 9083 8000 (Monday to Friday 8.30am–5pm)

---



## Skip the queue when paying your rates!

A self-serve tablet for rates payments is located in the Customer Service Centre at 55 Spring Street, Bondi Junction during the operating hours of Monday to Friday 8.30am to 5pm, and until 7pm on Thursdays. If you

## Free Wi-Fi

Did you know we have free Wi-Fi at Bondi Junction (Spring Street and Oxford Street Mall), Bondi Pavilion, Bondi Beach, Bronte Beach, Tamarama Beach, Waverley Library, and Waverley Park (Margaret Whitlam Recreational Centre and Cafe and Grandstand)?

This Wi-Fi service is available 24 hours a day, seven days a week. Anyone can access it with a Wi-Fi enabled device.

Looking forward, our Wi-Fi service will progress to have 90 Wi-Fi access points and will use approximately 27,000kw of energy per year. Council will offset this increase in energy use through the newly installed solar panels on Council buildings. Based on our predicted energy usage, new solar arrays will offset 6 times the amount of energy the Wi-Fi will utilise. Our aim is to have efficient public Wi-Fi throughout Waverley and our iconic beaches.

*Images: 1. There are several types of parking permits that residents can apply for.*

# Community Language Translations

Lifeguards' tips for staying safe at the beach



We want to make sure you're safe this summer by sharing a few of our lifeguards' key tips when visiting the beach.

Our lifeguards are on duty between 6am and 7pm all summer across Bondi and Bronte beaches. Tamarama beach is 8.30am-7pm all summer. Make sure you are careful when swimming outside the patrolled times. When you're at the beach, if you're unsure about anything, please talk to the lifeguards or lifesavers. If you're in the water and feeling like you need help, raise your hand immediately.

## Chinese

我们希望确保您在今年夏天到访海滩时的安全，特此与您分享我们的救生员为您提供的几条重要提示。

整个夏天，我们的救生员将于每天早上6:00至晚上7:00在Bondi海滩和Bronte海滩值班；在Tamarama海滩的值班时间是上午8:30至晚上7:00。在救生员巡逻时间之外游泳时，请务必谨慎行事。在海滩期间，如果您对任何事情感到不确定，请咨询救生员。如果您在水中觉得需要救助，请立即举手求救。

## Greek

Θέλουμε να διασφαλίσουμε ότι το φετινό καλοκαίρι είστε ασφαλείς όταν πάτε στην παραλία δίνοντας σας λίγες από τις βασικές συμβουλές των ναυαγοσωστών μας.

Οι ναυαγοσώστες μας είναι σε υπηρεσία μεταξύ 6 π.μ. και 7 μ.μ. όλο το καλοκαίρι στις παραλίες Bondi και Bronte. Στην παραλία Tamarama είναι από τις 8.30 π.μ. έως τις 7 μ.μ. όλο το καλοκαίρι. Βεβαιωθείτε ότι είστε προσεκτικοί όταν κολυμπάτε εκτός των ωρών περιπολίας. Όταν βρίσκεστε στην παραλία, εάν δεν είστε βέβαιοι για κάτι, παρακαλούμε μιλήστε στους ναυαγοσώστες ή τους διασώστες. Εάν είστε στο νερό και αισθάνεστε ότι χρειάζεστε βοήθεια, σηκώστε το χέρι σας αμέσως.

## Russian

Мы хотим убедиться в том, что вы безопасно проведете это лето и поделиться некоторыми советами наших спасателей, которые будут полезны при посещении пляжей.

Наши спасатели дежурят с 6:00 до 19:00 на протяжении всего лета на пляжах Бондай и Бронти, а на пляже Тамарама – с 8:30 до 19:00 на протяжении всего лета. Будьте осторожны при заплывах в непатрулируемые часы. Если вы в чем-то не уверены при посещении пляжа, поговорите с нашими спасателями или патрульными дежурными пляжа. Если вам нужна помощь на воде, немедленно поднимите вверх руку.

## Italian

Vogliamo assicurarci che questa estate sarete al sicuro e così condivideremo i consigli principali dei nostri bagnini per quando andate in spiaggia.

I nostri bagnini sono in servizio dalle 6.00 alle 19.00 su tutte le spiagge di Bondi e Bronte e dalle 8.30 alle 19.00 a Tamarama. State attenti quando nuotate negli orari in cui i bagnini non sono in servizio. Quando siete in spiaggia, se siete incerti di qualsiasi cosa, parlate con i bagnini e se siete in acqua e pensate di necessitare di aiuto, alzate immediatamente la mano.

## Spanish

Porque queremos garantizar su seguridad este verano, compartimos algunos de los consejos claves de nuestros guardavidas para los paseos a la playa.

Nuestros guardavidas prestan sus servicios desde las 6:00 de la mañana hasta la 7:00 de la tarde, durante todo el verano en las playas de Bondi y Bronte. El horario en la playa de Tamarama es de 8:30 de la mañana a 7:00 de la tarde, todo el verano. Asegúrese de tener cuidado cuando nade en horarios en los que no hay vigilancia. Cuando esté en la playa, si tiene alguna duda, hable con los salvavidas o guardavidas. Si está en el agua y le parece que necesita ayuda, inmediatamente levante la mano.

# Events in Waverley

## Carols by the Sea

Wednesday 12 December  
4.30 – 8pm  
Bondi Beach

Sing to your heart's content at this year's Carols by the Sea!

Each year, this merry event brings the community together to celebrate Christmas. With children's entertainment and carol singing, it's a great way to celebrate the festive season. Bring along your Christmas spirit, singing voices and a rug to sit on!

For more information visit [waverley.nsw.gov.au/carols](http://waverley.nsw.gov.au/carols)

## Summer School Holiday Program

7-18 January 2019  
Various locations around Waverley

Keep the kids happy, busy, creative and active these holidays with a fabulous array of awesome activities on offer this Summer School Holidays! This program includes both free and paid activities for children at Waverley Library, the Bondi Pavilion, Margaret Whitlam Recreation Centre and workshops presented by Waverley Woollahra Art School.

For more information visit [waverley.nsw.gov.au/schoolholidayprogram](http://waverley.nsw.gov.au/schoolholidayprogram)



## NYE at Dudley Page Reserve

Monday 31 December  
6pm – 12.30am  
Military Road, Dover Heights

Bring in the New Year at Dudley Page Reserve, with a relaxed family environment and amazing views of the harbour fireworks. Feel free to bring a picnic and rug and enjoy the wonderful array of food and drink stalls that will be on offer at this magnificent venue. There will also be kids rides, face painting, and a live DJ.

Tickets are essential and can be purchased at [moshtix.com.au](http://moshtix.com.au) or Council's Customer Service Centre on Spring Street.

Prices: Adults \$35, Concession \$15 (pensioners, registered carers, children 5-16yrs), Children under 5 free.

For more information visit [waverley.nsw.gov.au/nye](http://waverley.nsw.gov.au/nye)

## Flickerfest – 28th International Short Film Festival

11-20 January  
Bondi Beach

Flickerfest kicks off the summer movie season under the stars at Bondi Beach, screening the best short films from Australia and the world.

For more information and updates on the Flickerfest programme, visit [flickerfest.com.au](http://flickerfest.com.au)



## Precinct meetings

Our Precinct system is a great way to get involved. These are regular meetings run by residents with support from Council.

### Penkivil

Monday 3 December  
7 – 9pm  
3rd floor, Waverley Council Chambers

### Bronte Beach

Wednesday 5 December  
7.30 – 9.30pm  
Lugar Brae Church Hall, Lugar Brae Lane

### Charing Cross

Wednesday 12 December  
7.30 – 9.30pm  
Mary Immaculate Church, Parish House, 45a Victoria Street, Waverley

For more information visit [waverley.nsw.gov.au](http://waverley.nsw.gov.au) or call Council's Community Liaison Coordinator on 9083 8120.

## Summerama

Sunday 20 January  
9am – 1pm  
Bronte Park and Beach

Learn and meet some of the incredible animals who call our ocean and bushland home, courtesy of Taronga Zoo, participate in a beach clean-up and clothes swap event with Seaside Scavenge or just come along to chat to our Second Nature team for tips on how to live more sustainably. There will be music, giveaways and fun activities for you to join in.

For tickets and more information visit [brontesummerama.eventbrite.com.au](http://brontesummerama.eventbrite.com.au)

