

Waverley in FOCUS

Community Newsletter #59

Spring 2013



*Enhancing Bondi Junction
Page 8*



*Recreation Centre turns one
Page 9*



*Stormwater Pollution
Page 12*

work as a family day care educator with waverley council
Read more on Page 3

Your Waverley Councillors



Council Contacts

Customer Service Centre	9369 8000
Resource Recovery (Waste) Hotline	9369 8080
Waverley Library	9386 7777
Bondi Pavilion	8362 3400
Bondi Junction Town Centre Office	8305 8419
Bondi & Beaches	8362 3408
Waverley SES	9698 4477
Meals on Wheels & Shopping Service	9386 7977
Waverley Cemetery	9665 4938
Mill Hill Centre	9386 7999
School of Arts	9387 2461
Bronte Early Education Centre	9665 7998
Gardiner Early Education Centre	9387 1252
Waverley Early Education Centre	9386 9200
Mill Hill Early Education Centre	9386 7902
Family Day Care	9386 7785
Community & Seniors Centre	9386 7900
Bushcare	9386 7915
Environment Team	9369 8045

Waverley in Focus is published by Waverley Council. If you have any enquiries or comments about the publication please contact us.

Email
communications@waverley.nsw.gov.au

Post
PO Box 9, Bondi Junction 1355

Bondi Ward



Cr Joy Clayton
(Liberal)

PHONE 9130 8430
 MOBILE 0409 308 430
 EMAIL joyc@waverley.nsw.gov.au



Cr Dominic Wy Kanak
(Greens)

PHONE 9130 8460
 WORK 9369 8027
 EMAIL dominick@waverley.nsw.gov.au



Cr John Wakefield
(Labor)

MOBILE 0427 023 987
 EMAIL johnw@waverley.nsw.gov.au

Hunter Ward



Cr Sally Betts
(Liberal) **Mayor**

PHONE 9130 3250
 MOBILE 0425 363 530
 EMAIL sallyb@waverley.nsw.gov.au



Cr Leon Goltsman
(Liberal)

PHONE 8006 2799
 MOBILE 0424 379 079
 EMAIL leong@waverley.nsw.gov.au



Cr Miriam Guttman-Jones
(Independent)

PHONE 9371 1412
 EMAIL miriamgj@waverley.nsw.gov.au

Lawson Ward



Cr Angela Burrill
(Liberal)

PHONE 9114 8981
 EMAIL angela@waverley.nsw.gov.au



Cr Andrew Cusack
(Liberal)

PHONE 9114 8986
 EMAIL andrew@waverley.nsw.gov.au



Cr Paula Masseos
(Labor)

MOBILE 0419 292 207
 EMAIL paulam@waverley.nsw.gov.au

Waverley Ward



Cr Tony Kay
(Liberal)
Deputy Mayor

PHONE 9365 7707
 FAX 9365 7707
 EMAIL tonyk@waverley.nsw.gov.au



Cr Bill Mouroukas
(Liberal)

MOBILE 0421 341 815
 EMAIL billm@waverley.nsw.gov.au



Cr Ingrid Strewe
(Labor)

PHONE 9389 7299
 FAX 9389 4639
 EMAIL ingrids@waverley.nsw.gov.au

Please note: There was an error in the last issue of Waverley in Focus. Our cover story about Tommy Nock included incorrect spelling of Tommy's surname. It was printed Tommy Knock when it is spelled Tommy Nock. Our apologies to Tommy and his family for this error.

Extra educators needed to expand family day care services

Waverley Council is aiming to provide up to 60 more family day care services for people who live and work across the Eastern Suburbs over the next two years, and is calling for Educators to manage them.



The plan would create up to 240 more quality child care spaces and 60 jobs, providing significant relief to local families in the area and address a statewide issue of anxiety for many.

“With so many young families in our local area, the demand on child care services is always high,” Mayor of Waverley, Cr Sally Betts acknowledged. “Council currently has four long day care services and 37 family day care services, but we want to do more to help provide childcare opportunities in our community.”

As Mayor Betts stated as part of the recent launch of the recruitment campaign there are many wonderful benefits of being a Family Day Care Educator. “It’s a great way to earn money from home and could be the perfect opportunity for a new mum who doesn’t want to leave their child to return to work, or for someone considering a career change.”

Waverley Council coordinates the management of the services to help Educators through the registration process and ensure the services meet high standards, along with placement of children and administration support, as well as access to a network of other educators to share experiences and advice.

To become a Family Day Care Educator, you need a willingness to undertake a Certificate III in Child Care and a genuine desire to work with children.

■ **To discover how to get started and to find out more about being a Family Day Care Educator go to Council’s website at www.waverley.nsw.gov.au/familydaycare or call 9386 7785.**

MAYOR’S MESSAGE



As we move into Spring, and Rosh Hashana, can we say Shalom and send a message of peace, prosperity and good health to our Jewish residents as they celebrate the Jewish New Year.

Our fabulous Festival of the Winds event on September 8 is a reflection of the cultural diversity of Waverley and one that we are really proud of. This year the iconic event is in its 35th year.

As the first year of this electoral term comes to an end it is good to reflect on our many achievements of the past twelve months but more importantly to look to the future and the changes that will happen around Waverley.

Council’s infrastructure maintenance backlog has been an ongoing issue for many years with the new Council making some important decisions in order to ensure that we preserve our heritage buildings like Bronte House for future generations.

It is sadly too late for the Boot Factory and the building has been braced to hold it up for safety reasons. If the DA for demolition is approved, after community consultation, we hope to preserve parts of it as a tribute to its history.

Council has allocated some funds to the infrastructure upgrade of Waverley Cemetery. This is the first time ratepayer funds have been dedicated to the Cemetery as previously it was run as a self supporting business.

There is no doubt that it is time to address the infrastructure maintenance backlog in the Cemetery and find a means for maintaining this valuable heritage asset into the future. Much discussion has taken place about the replacement of the fence and the possibility of selling niches as we look for ways to further improve the condition of our important Cemetery.

As well as protecting our heritage, this Council is determined to improve the look and feel of Waverley and we are doing great things with the Bondi Beach, Park and Pavilion Plan of Management and Bondi Junction.

The draft Bondi, Beach, Park and Pavilion Plan of Management was recently approved by Council and

sent to the State Government for their permission to put it on exhibition.

We are hopeful that we will then be able to start the process of re-invigorating Bondi Park and the Pavilion to meet the community’s expectations. We have some short term goals such as immediately improving and building more toilet facilities, beautifying Bondi Pavilion and improving its functionality.

We are keen to improve our recreational facilities such as an upgrade of the skate park to provide an area for junior skaters, improve and expand the outdoor fitness station, expand the children’s playground and designate an area for beach volleyball. And of course, we want to plant more trees to provide much needed shade.

Bondi Junction is a particular focus of this Council so that we ensure that it becomes a viable liveable place and not just a CBD of streets and buildings. We are commencing our ‘Complete Streets’ program which has some major strategic aspects that have the potential to transform the town centre. Some of these aspects include creating a main entrance to the bus/rail interchange from the Oxford Street Mall, redesigning the western gateway to Bondi Junction and ensuring that the eastern gateway is welcoming and attractive.

As we start the process of ‘place making’ in Bondi Junction we have agreed to implement some low-cost demonstration projects in Spring Street and Gray Street. These ‘pop ups’ will let the community experience the value of reclaimed public space on a small scale and the benefit it can bring to street life and businesses. This will help to form a better understanding of the transformative effect the Complete Streets Project could have when applied to the entire town centre.

Later this year Council will commence an intensive community consultation on our vision to bring light rail back to Waverley, commencing with the Bondi Junction to Bondi Beach link along Bondi Road. This is a long term strategy and the consultation period will be comprehensive.

Thank you to everyone in the community for being so supportive of the new Council vision to make Waverley a much cleaner and better place to live, work and play.

Sally Betts



Tamarama Park Upgrade

As you may already know, Waverley Council is in the process of upgrading Tamarama Park, which will provide new, improved and safe facilities for beach, park and coastal walk users. Construction of the buildings are due for completion in October of this year.

The above image is an artist's impression of the new kiosk building on the south side of the park.

Landscape improvements to Tamarama Park will take place alongside construction of the new buildings. The landscape plan allows for a clear separation between pedestrian and vehicle areas making it a safer park for everyone.

There will be improved amenities for everyone, including:

- new bicycle parking area
- water drinking fountain and bottle refill station
- more seating

- more rubbish and recycling stations
- new barbecue with two hotplates
- well defined picnic areas in the park
- a 'spill out' picnic area next to the kiosk
- strictly controlled access for mobility parking, service vehicles and occasional surf club access
- new mobility parking and an accessible path to the kiosk and amenity building, the kiosk outdoor seating area and a picnic shelter.

Planting will be enhanced with over 30 new trees to provide shade, new turf, 50 per cent more native grasses and shrubs, with planting to be kept to a maximum height of 1m to allow views from the park to the beach. The new path will also address significant erosion and protect the park.

■ **For more information about the upgrade, visit www.waverley.nsw.gov.au/tamapark.**

Sculpture by the Sea

This year Sculpture by the Sea is happening between 24 October–10 November.

This annual exhibition attracts tens of thousands of people to the area.

Visitors not only enjoy the exhibition, but take in the beauty of our area, bringing business to shops, cafes and restaurants.

A traffic plan is in place to minimise the impact of the event for residents living in close proximity to Marks Park and Tamarama Park. For more information about the event and traffic changes, visit either our website at www.waverley.nsw.gov.au or www.sculpturebythesea.com.au.

If you have friends or family travelling to the event, tell them to leave their car at home and get public transport. The only parking available is in parking stations in Bondi Junction. All day parking is available for \$10 at our Hollywood Ave Car Park, entry via Waverley Street, Bondi Junction.



Waverley Community Living Program's planting day

Waverley Community Living Program (WCLP) supports people with an intellectual disability to live in the community by providing accommodation and independent living skills training.

Waverley Council provides four properties as part of its accommodation program. One of these is located in Bronte and houses three people; it's also used as a WCLP 'training home', providing education through its 'Simple Steps' and 'Learning for Life' programs. It has often been the social gathering point for the WCLP community; BBQs for beginning and end-of-year celebrations and other events.

The backyard was recently landscaped as part of a project that culminated in a 'planting out' day. This was a joint effort by the Parks and Open Spaces Team, South Mobile (Parks) Team and the Waverley Community Living Program (WCLP) staff and WCLP members. This community project is a great example of Waverley Council staff working together to improve the lives of people with disability.



The end result is a drought-hardy and low maintenance garden that captures the spirit of cooperation and provides a quality space for WCLP clients to use now and well into the future.

Get fit the right way – use a registered trainer

Our coastal parks and reserves are in high demand for passive and active outdoor recreation. To ensure they aren't overcrowded, group training is permitted in certain areas for registered trainers with permits to give opportunities to train whilst limiting the impact on the area and other users.

The permit system enables personal trainers to keep their clients in optimal health and wellbeing, ensuring they are fully insured and have the right certification. Meanwhile, we know we will be able to maintain our parks and reserves to a high standard so everyone gets to be outdoors safely.

A reminder if you're training in our parks, either with a trainer or yourself, not to use any Council infrastructure (eg picnic huts) that

were not built for the purpose of fitness regime. This is the same for our wonderful trees – please respect them by not attaching any fixtures or fittings to them.

A list of registered trainers in the Waverley area can be found on our website. By using a registered trainer, you are ensuring they have the right insurance, first aid, and industry registration, while respecting the preservation of our area.



We are very pleased Waverley Council received a highly commended in the recent NSW Local Government Awards for our communication on Planning Bondi's Future project. The RH Doherty Awards for Excellence in Communication is a coveted award and Council was proud to receive the accolade. This award is a reflection of the hard work we have put into the project, which is such an important project for the area. To receive updates on this project 'like' our Planning Bondi's Future Facebook page.

As the weather warms up and we head into Spring, we are busy gearing up for the summer months. The Tamarama Park upgrade is really coming along, with construction nearing completion and on track for the busy summer season. Read more about this project on page 4.

Congratulations to one of our lifeguards, Adriel Young, who has made it to the World Triathlon Championships in Hawaii on October 12. This is an example of how fit our boys in blue are, and the high standard they strive for not only in their roles as lifeguards. We wish Adriel luck in the competition!

Sculpture by the Sea opens this year on 24 October and will run through until 10 November. Council is working closely with Sculpture by the Sea organisers to minimise the impact of the event on local residents. A detailed traffic management plan is in place, with traffic controllers working on the ground during peak times. Residents directly affected by the road closures and traffic changes will be notified closer to the event. If you have friends and family travelling to the event, suggest they catch public transport as there is no parking in the area.

We will be launching a new website in the coming months, which will make it easier for you to find information about Council and Waverley. Keep your eyes peeled for the new look and feel website, which is coming soon to a computer near you!

Tony Reed
General Manager

A Dog's Life

Under the NSW Companion Animals Act there are strict rules governing the control and behaviour of dogs and dog owners/commercial dog walkers in public places.

The following are some guidelines:

- You are not permitted to walk more than four dogs at any one time in an on-leash area or an off-leash area
- Your dog must be under the effective control of a competent person by means of an adequate chain, cord or leash at all times unless in an approved off-leash area.
- If your dog is being exercised in an approved off-leash area it must always be under effective control of a competent person.
- All dogs must wear a collar and tag with your contact details on it when in a public space. They should also be

identified (micro-chipped) and registered.

- Owners must pick up and appropriately dispose of dog droppings. Council has dog tidy stations installed throughout Waverley.

There are certain places where dogs are not allowed in Waverley:

- Beaches and pools
- Within 10m of children's playgrounds, sports fields or bushlands
- Within 10m of any food prep areas
- Public places set aside for organised games, school grounds and shopping complexes
- Waverley Cemetery.

■ For a list of our dog off-leash areas and to have a say in any dog off-leash issues in the area, go to waverley.nsw.gov.au or [facebook.com/whatsonwaverley](https://www.facebook.com/whatsonwaverley)



Bondi Pavilion THE CENTRE OF BONDI CULTURE

SPECIAL EVENTS



Festival of the Winds

Australia's most exciting kite flying festival!

The skies came alive with hundreds of kites of all shapes and sizes from local and international kite makers

and flyers. Kite-making, full multicultural entertainment program, children's rides, art displays, dance workshops, food stalls and of course lots of fun kite-flying on Australia's most famous beach!

Sunday 8 September 11am-4pm

Bondi Pavilion, Park and Beach



MUSIC

Senior citizens concerts

Wednesdays 18 September, 16 October and 13 November
Music, dance and light refreshments. To book please call the Bondi Pavilion on **8362 3400**. 1.30-2.30pm, High Tide Room.

Come and create music in our upgraded music studios!

We now have professional equipment and facilities for everyone wanting to record or rehearse right here at the beach!

For information call the Music Co-ordinator on **8362 3400**.



THEATRE

Upcoming Productions

Empire, Terror on the High Seas, 28 August-28 September

Uh Oh Tony, 30 September-5 October (Kid's Show)

Goodbye Vaudeville Charlie Mudd, 8-26 October

Anaconda, 29 October-22 November

For info and bookings call **1300 241 167** or visit www.rocksurfers.org

GALLERY

Upcoming Exhibitions

Festival of the Winds exhibition, 27 August-15 September

Explosions in Nature, 17-29 September

Spare Time, 1-13 October

Bondi Pavilion Gallery. Open 7 days. 10am-5pm. Entry free



For more information call the Bondi Pavilion on **8362 3400** or visit www.waverley.nsw.gov.au/bondipavilion



If you are a planner, student, researcher, investor, service provider or business owner, then tap into the community profile portals, overflowing with facts and figures for your viewing pleasure:

Waverley Council's online and interactive community profile presents the population characteristics of your community, how they have changed over time and how they compare to other areas. It presents useful facts and figures, charts and graphs to assist Council in the planning of services and programs and the general public to become more informed about the community – and it's free!

The profile presents data from 2011, 2006, 2001, 1996 and 1991 Australian Bureau of Statistics (ABS) Census of Population and Housing for the local government area, and for smaller areas (eg suburbs) within it. This data is presented in easy-to-use tables, charts and commentary to answer the majority of frequently asked socio-demographic questions. You

can also export the data into your own reports and research papers.

Waverley Council's community atlas presents key socio-demographic characteristics for the area in a series of interactive maps. Based on 2011 census data, each map shows the distribution of specific target groups to help you identify spatial patterns and trends. So with just one click, you can view a map highlighting concentrations of community groups, for example home owners, 0-4 year olds, Russian-speaking residents and many more.

WANT TO FIND OUT MORE ABOUT WAVERLEY'S COMMUNITY PROFILE?

- Find it on Council's website: www.waverley.nsw.gov.au/about_us/waverley_community_profile, and <http://atlas.id.com.au/waverley/maps>
- Contact Annette Trubenbach on (02) 9386 7911 or email annettet@waverley.nsw.gov.au



Discover, discuss, decide – 'have the conversation'

Waverley Council supports discussing your wishes on organ donation with loved ones, in a bid to save more lives through transplant surgery.

Surveys showed that 86 per cent of Australians would agree to the donation of loved-ones' organs if they knew their family member wanted to be an organ donor. Unfortunately however, many families have not discussed organ donation and this has contributed to low donation rates in NSW.

Waverley Council is encouraging residents to discover, discuss and decide organ donation with their families – for more info go to the Australian Organ Donor Register (AODR) at: www.humanservices.gov.au/customer/services/medicare/australian-organ-donor-register.

Mayor Betts recently met with local kidney recipient, four-year-old Poppy Ivison. Poppy was born with renal failure and spent the first three years of her life in hospital and on dialysis – now she is a fun-loving, four-year-old after receiving a life-saving kidney transplant.

Pictured above (left to right): Poppy's mother, Deborah Invison, Poppy Invison and Mayor Sally Betts enjoying the afternoon sun in Waverley Park recently.

Waverley Business Forums

The inaugural Waverley Business Forum was held on Monday 24 June at the Council Chambers. The Forums are a joint initiative between Waverley Council and the Bondi Chamber of Commerce encouraging local business development growth.

Mayor of Waverley, Cr Sally Betts and the Bondi and Districts Chamber of Commerce, Mary-Anne Cronin said that they were pleased host Williams-Sonoma General Manager, Pennie Rende as key note speaker for the evening.



Pennie attended the launch of our Forum to talk about the four new Williams-Sonoma stores which

recently opened at Bondi Junction, and are the first stores of their kind to be located outside of the United States.

Pennie said that Bondi Junction was the number one choice for the location of these new stores because of the high volume of foot traffic through the area, and because their global online store has proven popular with shoppers in the area.

The Forums offer the local business community a great platform to share information on a strategic level, as well as providing invaluable networking opportunities.

If you're a business in Waverley and would like to attend the next Forum or sign up to our business e-newsletter email doingbusiness@waverley.nsw.gov.au.

Photo L-R: Mayor Sally Betts, Pennie Rende and Mary-Anne Cronin

Bronte Cutting car park upgrade



Enhancing Bondi Junction

We are enhancing Bondi Junction with a host of new projects and initiatives, as part of our aim to make the area a true destination. We want it to be more inviting, functional and desirable and an exciting place to live, work, visit and enjoy.

One element of this strategy is the Complete Streets project, which involves greening and beautifying Bondi Junction's footpaths and public places, making meeting places more vibrant and appealing, and improving connections for cycling, walking and access to public transport.

Part of the project will involve the design and installation of temporary pop up seats and artwork displays in the town centre, which will demonstrate how Complete Streets might be realised with real-life examples. The pop ups will officially launch on Monday 23 September at 10am.

■ For more information about the Bondi Junction Complete Streets Project visit www.waverley.nsw.gov.au/building_and_development/bondijunction or contact Sascha Martin, Urban Designer, on 9369 8159 / email sascham@waverley.nsw.gov.au.



Residents and visitors to Bronte are set to benefit from an upgrade to the Bronte Cutting car park, following community consultation and a Council decision to remove the manned booth system and install parking meters without time restrictions in the car park.

Beach permit holders will continue to be able to park anywhere in the car park for free, while non-permit holders will pay \$3.50 an hour up to a maximum of \$15 if they plan to stay for more than four hours.

Mayor of Waverley Sally Betts said the upgrade would see a marked improvement in parking in Bronte and cheaper parking for some people. "We know that drivers aren't generally a fan of parking meters, but they do encourage turnover in parking, which means more spaces," she said.

"Meters are definitely the most cost-efficient way of delivering parking space opportunities to everyone; in this case it also means cheaper parking for those who stay less than four hours."

The car park's hours of operation will remain unchanged, and are

from 9am–6pm May to September, and 9am to 8pm October to April. A 10km/hour shared zone will also be introduced, improving safety for pedestrians. Mobility spaces and parking conditions will remain the same.

"Some people were really fond of the manned booth system as an information kiosk, but parks staff, rangers and lifeguards are in the area if there are questions, and we are looking into whether the meters can serve as an electronic information kiosk. Beach permits may be able to be renewed via the parking meters, which would save local residents having to go to Council's Customer Service Centre in Bondi Junction."

The meters are expected to be installed by December this year.



Margaret Whitlam Recreation Centre Celebrating one year in operation

The Margaret Whitlam Recreation Centre recently turned one! The centre (Waverley Pavilion) opened its doors on 5 June 2012, and since then has been providing first class sports and recreation facilities to the Waverley community.

The indoor sports court has experienced very high demand, with over 30,000 visits. It's home to netball, basketball and futsal leagues, and also provides access to volleyball, table tennis, and floorball.

The centre provides public programs to targeted groups in the community. These include the New Start soccer program for 3 to 6-year-old children with additional needs, and an Active Over 50 initiative that provides weekly table tennis, yoga and tai chi sessions for older people. In addition, there are multisport workshops for 3 to 5-year-olds, helping develop coordination and confidence. Council also works with Waverley Action Youth Services to provide a weekly free drop-in

basketball/soccer session for teens.

The centre has also been providing first class sports facilities to the sporting clubs that call Waverley Oval home. The Waverley Oval has long been recognised as one of the premier ovals in the region and now has the change rooms to match this status.

The Waverley Park Kiosk has become a firm favourite with local families who come and enjoy the newly landscaped Park and children's playground.

The Community Room at the centre has played host to a number of civic, recreation and private functions in its first year. The room provides the community with a high quality function space for hire and is proving hugely popular.

We hope you have had the opportunity to enjoy the facilities provided by the centre – if not, come by and say hi and check it out for yourself.



Have you registered your swimming pool?

Don't forget that you must register your swimming pool on the statewide register before 29 October 2013, or you could be fined.

Amendments to the *Swimming Pools Act 1992*, which came into effect on 29 April, mean that it is now mandatory for all swimming pools to be registered with the NSW Government.

You can register your swimming pool via the online register, or by lodging a completed registration form with Waverley Council.

■ **For more information or to register your pool, please visit waverley.nsw.gov.au or swimmingpoolregister.nsw.gov.au.**

PRECINCT MEETINGS

Have your say!

Our precinct system is a great way to get involved. These are regular meetings run by residents with support from council.

OCTOBER

Bondi Beach

14 Oct, 7–9pm – Ocean Room, Bondi Beach Pavilion

Charing Cross

14 Oct, 7.30–9.30pm – Charing Cross Hotel, 81 Carrington Road

Bronte Beach

16 Oct, 8–9.30pm – Lugar Brae Church Hall, Lugar Brae Lane

Penkivill

21 Oct, 7.30–9.30pm – 3rd floor Waverley Council Chambers

North Bondi

30 Oct, 7–9pm – St Annes Church, cnr Blair and Mitchell streets (entrance is via Oakley Road, meeting room is at the back of the church)

NOVEMBER

Rose Bay

4 Nov, 7.30–9.30pm – Magnolia Healing Centre (Uniting Church) cnr Dover and Old South Head Road, Rose Bay

Queens Park

6 Nov, 7–9pm – Waverley Library Theatre

Dover Heights

11 Nov, 7.30–9.30pm – Magnolia Healing Centre (Uniting Church) cnr Dover and Old South Head Road, Rose Bay

Bronte

11 Nov, 7–9pm – Bronte Public School, Hewlett Street

Vaucluse/Diamond Bay

14 Nov, 7.30–9.30pm – Kimberley Reserve Hall, Military Rd, near OSH Rd

Bondi Junction

20 Nov, 6.30–8.30pm – Waverley Library Theatre

Penkivill

25 Nov, 7.30–9.30pm – 3rd floor Waverley Council Chambers

Bondi

27 Nov, 7–9pm – 3rd Floor Waverley Council Chambers

South Bondi/Watson

27 Nov, 7.30–9.30pm – 3rd floor Waverley Council Chambers

■ **Visit www.waverley.nsw.gov.au or call Mary Shiner on 9386 7924 for more info.**

Library News...

32-48 Denison Street, Bondi Junction
www.waverley.nsw.gov.au/library

Waverley
Library

Fowl Freebies!

Free entry to Library events and workshops

There's no time like the present to join the Friends of Waverley Library (FOWL).

Not only will you receive invitations to exclusive FOWL events, meet new people and have the chance to join a members-only book club, you are now entitled to receive FOWL Freebie vouchers each year, on top of all the other amazing benefits:

- 10% discount at selected bookshops
- Subscription to *FOWL Deeds* quarterly newsletter
- Discounts at FOWL-sponsored Library events, and
- 10 free reservation vouchers each year.

FOWL Freebie vouchers can be redeemed for free entry to FOWL-sponsored Library events and courses valued at \$25 and under.

Membership costs \$15 (\$10 conc) a year and there are discount rates for groups and families. To find out more call **9386 7777** or visit waverley.nsw.gov.au/library.

Waverley Library

What's On

Are you in the know?

Do you want to be one of the first to hear about Waverley Library's author talks, workshops, holiday programs and special events?

Over 1,000 people have already subscribed to our *What's On* newsletter.

You can join them by visiting waverley.nsw.gov.au/library, clicking on the web banner and signing up to the Library newsletter. We'll send you a short and sweet e-newsletter each month. Too easy!

So You Think You Can Judge?

Literary Lovers Wanted for 'The Nib' People's Choice Award



The entries are in. The time is up. The words are jumping off perfectly aligned, 12-font single-spaced sentences across hundreds of pages to a tough judge's eyes as you read this.

If you hear screams from Waverley Library in the next few weeks, it's probably not from the 'We Heart Horror' Society's monthly meeting, but those who have the hair-pulling job of having to whittle down some of the best writers in Australia, all going against each other for the highly esteemed 'The Nib' Waverley Library Award for Literature, a \$20,000 prize for the best literary works demonstrating excellence in research.

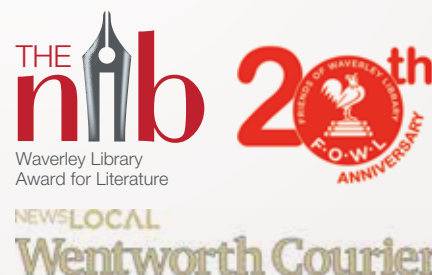
To give you an idea of the standard of authors who enter, last year's winner of 'The Nib' was Sydney-based, highly esteemed author Jane Gleeson-White and shortlisted authors included Kate Grenville for her entry *Sarah Thornhill*, along with Adrian Hyland for *Kinglake-350*.

This year, however, there's a twist: we want your help to decide who will take out The People's Choice Award. When the shortlisted works have been selected, you have the unique chance to stand up (or, of course, sit down) and make your voice heard on your personal favourite by simply voting online.

The People's Choice winning author will also receive a \$500 prize and those who vote for the work will be in the running to win:

- Signed set of shortlisted books
- Invitation to the prestigious literary awards breakfast
- Bondi Icebergs Dinner.

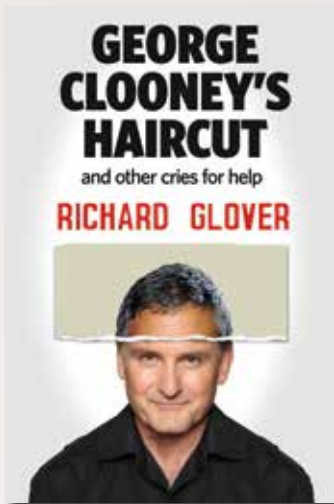
Go to waverley.nsw.gov.au/nib to read the shortlist of entries, everything about The Nib that you need to know, and, most importantly, get your vote in. Note there's only a limited time between announcing the shortlist and when voting closes, so we hope you're better than most writers with deadlines.



Waverley Library – full of free stuff!

Now it's Spring, exercise your mind as well as your body! There's loads to do at Waverley Library that's either free or shamelessly low in price...

- Free membership for loans of books, CDs, DVDs and audio books to members
- 24-hour online download of ebooks and audio books via our Library website
- Weekly children's storytime and craft activities
- Author talks, courses, book and games clubs, workshops and programs
- Exhibitions and art displays
- Actors' forums, poetry groups and music recitals
- Subsidised school holiday activities for all ages



George Clooney's Haircut and Other Cries for Help...

Richard Glover
at Waverley Library,
Sunday 15 September, 2.30pm

Come and join us for an uproarious afternoon with celebrated author, broadcaster and raconteur Richard Glover as he talks about his new book *George Clooney's Haircut and Other Cries for Help*.

Keep the Father's Day magic alive and bring Dad or Grandpa along for this free event at Waverley Library. Richard is the author of several successful books, writes an hilarious weekly column for the *Sydney Morning Herald* weekend edition, and presents the Drive program on ABC702 local radio.

Refreshments served. No bookings required, but please RSVP for catering at library_events@waverley.nsw.gov.au or call 9386 7777.

- Computer and technology workshops
- Technology hub with access to WiFi and internet-connected computers
- Study and meetings rooms
- Home Library delivery service

Seniors bus tours

Join our luxury tours for Waverley Community & Senior Centre members. Bookings and departure: 31-33 Spring St, Bondi Junction, call 9386 7900. Payment required two weeks before the departure date of the relevant tour.

CANBERRA FLORIADE

Wednesday 18 September
8am–6pm

This year marks the city's 100th birthday, and the garden displays at Floriade will celebrate this occasion through the theme 'Innovation – inspiration for the nation'. Cost per person is \$45, which includes morning tea (lunch at own expense) and coach touring.

MOUNT WILSON GARDENS

Saturday 26 October
9am–5.30pm

Stroll around the five acre Windyridge Garden and enjoy a picnic lunch of homemade quiche, bread sticks, salads, dessert and red, white wine or juice. Visit Mt Wilson and Merry Garth garden. Cost per person is \$65 including morning tea, two course lunch and two garden admissions.

SOUTHERN HIGHLANDS

GARDENS: RED COW & MOIDART

Wednesday 20 November
8.30am–5.30pm

Enjoy a 'Picnic in the Park' including several meats, salads, cheeses, gherkins and pickles, bread rolls, dessert and red, white wine or juice. Cost per person is \$65 and includes morning tea, two course lunch and two garden admissions.

Confirmation is required 48 hours before departure. Unfortunately charges apply for last minute cancellation. Remember to bring your receipt on the tour day.

Waverley Community and Seniors Centre also offers podiatry, bower therapy, foot and remedial body massage and haircutting services for an affordable fee to its members – contact 9386 7900 for more information.

REDUCE YOUR ECO-FOOTPRINT IN THE EASTERN SUBURBS

Waverley, Woollahra and Randwick communities are continuing to benefit from a 3-Council partnership that aims to reduce the ecological footprint of the Eastern Suburbs. This partnership has been running for six years since the three Councils secured grant funding from the NSW Environment Trust.

The funding has enabled the development and support of a number of fantastic resources, initiatives and events in the Eastern Suburbs, including:

- Barrett House, a 'demonstration' house which showcases a range of sustainable initiatives and gadgets for the home and garden. Barrett House is open to the public on the first Thursday of the month where you can drop in any time between 9.30am–12.30pm
- Compost Revolution, an initiative incorporating regular workshops, events, community programs and a website to educate residents and schools about the value of composting and worm farming, as well as access to free resources such as compost bins and worm farms
- Approximately 100 free workshops a year on a variety of environmental topics
- The Eastern Suburbs Sustainable Schools Network, a forum for school teachers and parents to network and chat about new environmental initiatives and programs suitable for school-aged kids
- Eastern Green Thumbs Network - Local sustainable gardeners who meet quarterly to share tips and tricks
- Business Audits and more.

■ **For more information and to find out how you can get involved, please visit reduceyourfootprint.com.au**

STORMWATER POLLUTION

Ever wondered where the stormwater goes?

It goes to our beaches and waterways at Tamarama, Bondi, and Bronte, so keeping pollutants out of the stormwater will help ensure our beaches are clean for everyone to enjoy safely.

What is stormwater?

Stormwater is basically rainwater - plus anything the rain carries along with it. When it rains, water flows along driveways, roads, footpaths and parkland, then washes into stormwater gutters and drains to a series of underground pipes and open channels that eventually empty into our ocean. This is separate to our sewage system.

Typically, stormwater is untreated and so it's important that we keep pollution out!

Main sources of stormwater pollution:

- Litter – cigarette butts, plastic, cans and paper can clog pipes and break down into toxins.
- Chemicals – detergents, fertilisers, pesticides, oils and grease can be toxic to humans, animals and plants.

- Natural pollution – leaves and garden clippings can clog waterways and reduce the amount of oxygen available to marine life.
- Animal droppings – can increase the nutrient load in oceans.
- Sediment – from soil erosion or runoff from building sites can block sunlight required for plants to grow and clog fish gills.
- Bacteria – can pose a serious health risk to humans so don't swim in the ocean after heavy rainfall.

How you can help keep our stormwater clean

The most effective way to reduce stormwater pollution is to stop it entering the drain in the first place. Here's a few tips to help keep our waterways clean:

- sweep your driveway and paved areas instead of hosing them down
- rake garden clippings and use them for mulch or place in a green bin
- dispose of chemicals (like paint) properly at Household Chemical Cleanout events



Streamwatch and local bushcare volunteers monitoring water quality at Bronte Creek.

- place rubbish in the appropriate bins
- wash your car on the grass or at a service station
- check your car for leaks regularly
- scoop up your pet's droppings.

Great news!

Council has partnered with Streamwatch and Bushcare volunteers to monitor water quality in Bronte Creek. The data collected will be uploaded to the Streamwatch main data base. Find out more at www.streamwatch.org.au/streamwatch/

Find out more

Visit our website: www.waverley.nsw.gov.au/environment. Call our Stormwater Project Officer on 9369 8205.



Are you a bargain hunter? Have you got unwanted items that you've been waiting to get rid of? Join in the fun and frivolity of Garage Sale Trail, which is set to ignite Waverley's recycling mojo for the fourth year in a row!

Held on Saturday 26 October 2013, Waverley Council is once again getting behind this national initiative. We will be supporting hundreds of residents, businesses and community groups to sell off their unwanted items, get to know their neighbours and raise awareness about the need to reduce waste to landfill.

Bondi is the birthplace of the Garage Sale Trail. It all started here in

2010 and in the three years of its operation the now national initiative has diverted one million items from landfill, raised over \$3 million in fundraising and brought over 800,000 neighbours together.

We're expecting a huge number of sellers and scouters to be snaking their way through the LGA on the day, so visit www.garagesaletrail.com.au to register a sale or shop the trail.



FREE ENVIRO WORKSHOPS

At Waverley Council we offer a series of FREE workshops so you can learn more about reducing your impact on the environment, while saving money and improving your health and wellbeing. Upcoming topics include natural pest management, bike maintenance, solar energy, birdwatching skills and much, much more! Join us in these interactive, fun and informative workshops and meet like-minded people living in Waverley. Places limited.

WANT TO FIND OUT MORE OR BE KEPT IN THE LOOP?

- Visit our website waverley.nsw.gov.au/environment to learn more about our workshops and upcoming events.
- Sign up to our Environment e-newsletters waverley.nsw.gov.au/your_council/council_news/waverley_subscriptions
- Call our Environment Officer (Community Engagement) on 9369 8045.

BIKE MAINTENANCE WORKSHOP

Wed 25 September / 23 October / 27 November, 6–9pm
Mill Hill Centre, Bondi Junction

BIRDWATCHING FOR BEGINNERS

Saturday 9 November, 9–11am
Bronte Gully

LIVING WITH LESS CHEMICALS & PLASTIC

Wednesday 16 October, 10.30am–12.30pm
Barrett House, Randwick

KERBSIDE REUPHOLSTERY

Sunday 17 November, 10am–4pm
Rose Bay Secondary College, Woodwork Room

NATURAL PEST MANAGEMENT

Saturday 19 October, 10am–12noon
Waverley Community Garden

RUSTY RIDERS CYCLING SKILLS WORKSHOP

Sunday 17 November, 10am–1pm
Waverley Park, Bondi Junction

UNDERSTANDING SOLAR AND SOLAR HOT WATER

Tuesday 22 October, 6.30–8.30pm
Barrett House, Randwick

SUMMER COOLING

Wednesday 30 October, 10am–12noon
Barrett House, Randwick

GROWING FOOD IN THE CITY

Saturday 2 November, 9.30am–12.30pm
Waverley Community Garden



■ For more information, visit www.waverley.nsw.gov.au/environment/whats_on

NSW bike week

Proudly supported by Transport for NSW

Celebrate cycling in Waverley

Sunday, 15 September

Free and fun day. Led bike rides, bike checkups, skills workshops, all with bike hire available. Waverley Park from 10am.

■ For more information check waverley.nsw.gov.au/cycling

Ride2Work Day

Wednesday, 16 October

Are you keen to be part of a fun, cheap and convenient activity that will improve your health and help you reduce your stress levels? Join us in this year's Ride2Work Day. Your efforts will be rewarded with a delicious fruit and croissant breakfast in Oxford St Mall between 7am and 9am.

■ For more information visit www.ride2work.com.au



*Bondi Beach – c. 1888, looking north Ben Buckler Headland
Cliff House Hotel (demolished 1922 – the Astra Hotel was built on the site)*



Riot in Bondi

The southern end of Bondi Beach was a favourite spot for picnickers in the 1880s; these being the days before surf bathing, when adults could do little more than paddle “fully rigged in pants and shirts”. They would arrive in their spring carts and delivery vans and the horses could graze the grassy slopes amongst the ti-trees and honeysuckle.

This peaceful summer scene was disturbed on Boxing Day 1884. According to the *Sydney Morning Herald*: “A disgraceful fracas occurred at Bondi yesterday. The pretty little village was crowded with visitors, and amongst them were some members of the larrikin type.” Having quenched their thirst in the Cliff House Hotel (now the site of the Astra), a group of drunken rowdies descended upon the Bondi Dance Hall, located opposite the hotel.

A row, begun over a young woman, came to blows and their mates joined in the fray. The hall had been decorated with gum saplings and these were pulled down and used as “waddies”. The fight developed into a real “ding-dong go” - the women partisans joining in, tearing at each other’s hair and clothing.

Senior Constable Stapleton and Constables Gray and Stove were on duty and immediately went to quell the disturbance. The crown turned on the police and chased them from the hall into the scrub where they were caught and badly beaten. The officers were later seen at the Waverley Police Station, their “white pants covered in blood and their heads bandaged”. A bystander named Harrison Kerwan went to the assistance of the police but was himself severely injured. Eventually police reinforcements arrived from the city to find the whole locality in

an uproar and several rioters were arrested. The Bondi riot gave rise to the battle cry of “Give ‘em Bondi!”

John Jones, James Kelly and Michael Healy went to trial on 26th March, 1885, and were sentenced to eight years imprisonment each on the charge of maliciously wounding Constable Stove, and five days later were sentenced to two years hard labour for riot.

Local residents sent a petition to Waverley Council claiming the dance pavilion to be a “nuisance and annoyance to the inhabitants” and this resulted in “the license granted to John Heinz for Dancing Pavilion at Bondi for the year 1885 be cancelled”.

Published by Waverley Library from sources in the Local History Collection.

■ For more information on our fascinating local history see the Local Studies website on Council’s website, www.waverley.nsw.gov.au.

ENGLISH

Are you looking for a new career and want to work from home? Waverley Council is aiming to provide up to 60 more family day care centres for people who live and work across the Eastern Suburbs over the next two years, and is calling for Educators to manage them. To discover how to get started and to find out more about being a Family Day Care Educator go to Council's website at www.waverley.nsw.gov.au/familydaycare or call 9386 7785 for more information.

Sculpture by the Sea is on between 24 October – 10 November this year. Visit www.sculpturebythesea.com.au for more information about the event and traffic changes. If you have friends or family travelling to the event, tell them to leave their car at home and get public transport. There is very little parking in and around Tamarama and Bondi throughout the event dates.

Are you interested in what's happening in your area and want to have your say? Why not get involved with your local precinct committee? To find your precinct and meeting times call **9386 7924**.

Call Waverley Council on **9369 8000**, visit www.waverley.nsw.gov.au or ring TIS on **131 450** to connect you with us.

RUSSIAN

Вы подумываете о том, чтобы сменить род занятий и хотите работать на дому? В течение ближайших двух лет Совет Уэверли планирует организовать 60 семейных детских садов в помощь людям, работающим в восточных пригородах, поэтому появится потребность в образовательных работниках, чтобы управлять этими центрами. Чтобы узнать о том, как начать этот процесс и о том, как стать образовательным работником в семейном детском саду (Family Day Care Educator), обратитесь на вебсайт Совета: www.waverley.nsw.gov.au/familydaycare или звоните по номеру 9386 7785, чтобы получить дополнительную информацию.

Выставка «Скульптуры у моря» (Sculpture by the Sea) пройдет с 24 октября по 10 ноября этого года. Эта выставка привлекает десятки тысяч людей в этот район в каждые выходные дни в период ее проведения. Посетите сайт www.sculpturebythesea.com.au, чтобы подробнее узнать об этом мероприятии и изменениях дорожного движения. Если ваши родственники или друзья планируют посетить эту выставку, то посоветуйте им оставить машину дома и воспользоваться общественным транспортом. В районах Тамарама и Бондай будут иметься лишь очень ограниченные возможности парковки в период проведения мероприятия.

Вас интересует происходящее в вашем районе и вы хотите выразить свое мнение? Почему бы не поучаствовать в работе своего местного исполнительного комитета? Чтобы узнать о принадлежности к району и времени собраний, звоните по номеру 9386 7924.

Звоните в Совет Уэверли по номеру 9369 8000, посетите сайт www.waverley.nsw.gov.au или звоните в Переводческую службу TIS по номеру 131 450 и они соединят вас с нами.

HUNGARIAN

Keres új munkalehetőséget és akar otthonról dolgozni? A Waverley Tanácsnak az a célja, hogy a következő két év folyamán 60 új bölcsődét nyisson azok számára, akik a keleti városrészekben dolgoznak. A Tanács keres nevelőket, hogy a bölcsődéket vezessék. Hogy megtudja, hogy mit kell csinálni, hogy mi egy bölcsődei nevelő feladata, keresse fel a Tanács weboldalát a www.waverley.nsw.gov.au/familydaycare cím alatt vagy hívja a 9386 7785-ös számot további tájékoztatásért

A Sculpture by the Sea, tengerparti szoborkiállítás október 24. és november 10. rendezik meg. Amíg a kiállítás tart, tízezerrel jönnek ide látogatók minden hétfőgégén. Keresse fel a www.sculpturebythesea.com.au címet, ahol további tájékoztatást kaphat az az eseményről valamint forgalmi változásokról. Ha barátjai vagy rokonai jönnek az eseményre, mondja meg nekik, hogy hagyják otthon az autójukat és jöjjenek tömegközlekedéssel. Az esemény időpontjában nagyon kevés parkoló hely van Tamarama és Bondi környékén.

Érdeklí önt, hogy mi történik az ön környékén és hozzá akar-e ehhez szólni? Mért ne vegyen részt a helyi körzeti bizottság munkájában? Hogy megtudja, hogy melyik az ön körzete és hogy mikor van gyűlés hívja a 9386 7924-es számot.

Hívja a Waverley tanácsot a 9369 8000-ás számon, keresse fel a www.waverley.nsw.gov.au címet vagy hívja a telefon tolmács szolgáltatást, hogy kapcsolják össze velünk.

SPANISH

¿Está buscando una nueva carrera y desea trabajar desde su casa? Durante los próximos dos años, la Municipalidad de Waverley planea ofrecer hasta 60 nuevos centros de cuidado infantil en el hogar (family day care) para gente que vive y trabaja en los barrios del este, y está convocando a educadores para que los dirijan. Para averiguar cómo proceder y obtener más detalles acerca de la posibilidad de ser un educador en un centro de cuidado infantil en el hogar, visite el sitio web de la municipalidad: www.waverley.nsw.gov.au/familydaycare o llame al 9386 7785, para recibir mayor información.

La muestra Esculturas cerca del mar (Sculpture by the Sea) tendrá lugar entre el 24 de octubre y el 10 de noviembre del corriente año. Durante su transcurso, esta exhibición atrae a decenas de miles de personas cada fin de semana. Visite www.sculpturebythesea.com.au para obtener más información acerca del evento y de cambios en el tránsito. Si tiene amigos o familiares que viajan para contemplar la muestra, pídale que dejen el automóvil en casa y usen transporte público. Hay muy poco espacio para estacionar en Tamarama y Bondi, y en sus alrededores, durante toda la duración del evento.

¿Le interesa lo que sucede en su zona y desea expresar su opinión? ¿Qué le parecería participar en el comité de su distrito? Para ubicar el distrito que le corresponde y averiguar los horarios de las reuniones, llame al 9386 7924.

Llame a la Municipalidad de Waverley al 9369 8000, visite www.waverley.nsw.gov.au o llame al Servicio de Traducción e Interpretación (TIS) al 131 450, para que lo comuniquen con nuestra oficina.

SIMPLIFIED CHINESE

您在寻找新职业并想在家中工作吗? Waverley 市议会计划在两年内在东部郊区生活和工作的专业人士提供60多个家庭日托中心, 目前市议会正诚招教育工作者建立和经营这些家庭日托中心。了解如何开始这份新职业及查询更多有关成为家庭日托教育工作者的信息, 请访问市议会网页 www.waverley.nsw.gov.au/familydaycare 或致电 9386 7785。

“海滨雕塑展”将于今年10月24日至11月10日举办。该展览在每个周末开放期间将吸引数万人前往展区。查询有关该展览及交通变化的更多信息, 请访问 www.sculpturebythesea.com.au。如果您有朋友或家人准备前去观展, 请告诉他们将车辆停放在家中, 搭乘公共交通前往。活动举办期间, Tamarama 和 Bondi 及周边地区的停车位会非常有限。

您关心自己所在地区的活动吗? 您想发表自己的见解吗? 何不参与您当地的小区委员会? 查看您的小区及会议时间, 请致电 9386 7924。

致电 Waverley 市议会 9369 8000, 访问 www.waverley.nsw.gov.au 或致电翻译与传译服务 (TIS) 131 450 要求接通我们。

GREEK

Κοιτάτε για καινούργια καριέρα και θέλετε να εργαστείτε από το σπίτι; Ο Δήμος του Waverley σκοπεύει να διαθέσει μέχρι 60 περισσότερα κέντρα ημερήσιας φροντίδας για άτομα που κατοικούν και εργάζονται στα ανατολικά προάστια τα επόμενα δύο χρόνια, και καλεί Εκπαιδευτικούς να τα διοικούν. Για να ανακαλύψετε πώς να αρχίσετε και για να μάθετε περισσότερα για τον Εκπαιδευτικό της Οικογενειακής Ημερήσιας Φροντίδας πηγαίετε στην ιστοσελίδα www.waverley.nsw.gov.au/familydaycare ή τηλεφωνήστε στο 9386 7785 για περισσότερες πληροφορίες.

Γλυπτά στη Θάλασσα είναι μεταξύ 24 Οκτωβρίου – 10 Νοεμβρίου φέτος. Αυτή η έκθεση προσελκύει δεκάδες χιλιάδες επισκέπτες στην περιοχή κάθε σαββατοκύριακο που λειτουργεί. Επισκεφτείτε www.sculpturebythesea.com.au για περισσότερες πληροφορίες για την εκδήλωση και τις αλλαγές στην κυκλοφορία. Αν έχετε φίλους ή οικογένεια που ταξιδεύουν στην εκδήλωση, πείτε τους να αφήσουν το αυτοκίνητό τους στο σπίτι και να πάνουν τη δημόσια συγκοινωνία. Υπάρχει πολύ λίγος χώρος για στάθμευση γύρω από την Tamarama και το Bondi όλες τις ημέρες της εκδήλωσης.

Ενδιαφέρεστε για τι συμβαίνει την περιοχή σας και θέλετε να πείτε τη γνώμη σας; Γιατί δεν αναμηνύσετε με την επιτροπή της τοπικής σας περιοχής; Για να βρείτε την περιοχή σας και τις ώρες που συνεδριάζει καλέστε το 9386 7924.

Καλέστε τον Δήμο του Waverley στο 9369 8000, επισκεφτείτε www.waverley.nsw.gov.au ή τηλεφωνήστε το TIS (Τηλεφωνική Υπηρεσία Διερμηνείων) στο 131 450 για να σας συνδέσουν με μας.

What's on in Waverley

SEPT

History Week FREE special event: Researching your family history online – genealogy for beginners

Tues 10 September, 10am–12noon, Waverley Library Theatre

Tech Time: Mousing around

Wed 11 September, 10–11.30am, Waverley Library Computer Room

Get comfortable using the mouse and keyboard, opening applications, organising files and folders and using removable USB devices. Free. Bookings essential on **9386 7777** or at www.eventbrite.com.au.

Celebrating Cycling in Waverley
Sun 22 September from 10am, Waverley Park

FREE bike rides run by BIKEast with FREE bike hire available. FREE bike checkups, workshops and information about where and how to cycle around Waverley.

Further information on waverley.nsw.gov.au/cycling.



Tech Time: Let's email!

Wed 25 September, 10–11.30am Waverley Library Computer Room

Set up an online gmail account, send and receive emails, create a password, understand attachments and email etiquette. Free. Bookings essential on **9386 7777** or at www.eventbrite.com.au.

OCT

Tech Time: Write On!

Wed 9 October, 10–11.30am, Waverley Library Computer Room

Get started with Word 2007. Create, edit, format, save and print documents. Free. Bookings essential on **9386 7777** or at www.eventbrite.com.au.

National Ride to Work Day

Wed 16 October

Give riding to work a go on this National event and join Waverley Council for a fruit and croissant breakfast in Oxford St Mall from 7am to 9am. For more information contact our Sustainable Transport Officer on **9369 8206** or environment@waverley.nsw.gov.au.

Sculpture by the Sea

24 October–10 November, Tamarama to South Bondi coastal walk

Waverley Council has been a major partner supporting Sculpture by the Sea since its beginnings in 1997. The sculpture show attracts over 500,000 people to the Tamarama to South Bondi coastal walk, beaches and parks.

Books, movies and more

Fri 18 October, 10.30am–12noon, Waverley Library Theory Room

Share your love of books, movies or audiobooks in this enjoyable seniors discussion group. Free, no bookings required. For more info call **9386 7709**.

Tech Time: be my friend :)

Wed 23 October, 10–11.30am, Waverley Library Computer Room

Keep in touch with friends and relatives on facebook. Open an account, create posts, upload photos and maintain privacy settings. Free. Bookings essential on **9386 7777** or at www.eventbrite.com.au.

NOV

Seniors Concert at Bondi Pavilion

Wed 13 November, 1.30pm

A fun and entertaining concert including music and dance is held for senior citizens on the third Wednesday of each month in the Hightide Room at the Bondi Pavilion. The concert runs from 1.30–2.30pm and light refreshments are served. Entry is free but please call the Bondi Pavilion on **8362 3400** to book.

Rusty Riders Cycling Skills Workshop

Sun 17 November, 10am–1pm Waverley Park

Brush up on your basic cycling skills and gain the confidence to get back on your bike. This FREE workshop is designed for people who know how to ride but need better bike handling skills before contemplating a ride on the road. Bookings are essential. For more information and to secure your place email environment@waverley.nsw.gov.au or call **9369 8045**.

Last-Sunday-of-the-month book sales

Sun 24 November, 1–4pm Waverley Library Foyer

No-one can resist a bargain, especially when it's great books at discount prices! Friends of Waverley Library will be selling a fantastic range of second-hand fiction, historical, biographical, and classic and nonfiction titles for kids and adults. Proceeds go to FOWL for more fantastic Library activities and programs.



Like this page
www.facebook.com/WhatsOnWaverley



and follow
[@WhatsOnWaverley](https://twitter.com/WhatsOnWaverley)
on Twitter.



Waverley In Focus is a free quarterly newsletter published by Waverley Council