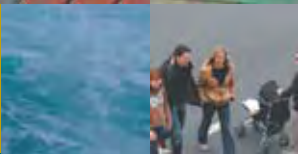
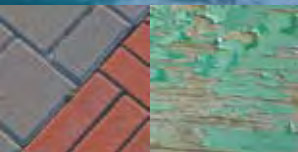
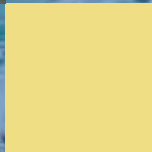
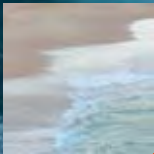


State of the Environment REPORT 2007





© Waverley Council 2007

PO Box 9, Bondi Junction NSW 1355

Waverley Council Customer Service Centre
55 Spring Street, Bondi Junction

PHONE 02 9369 8000

FAX 02 9387 1820

EMAIL waver@waverley.nsw.gov.au

www.waverley.nsw.gov.au

Introduction

This is the thirteenth consecutive State of the Environment Report (SoE) prepared by Waverley Council for the Waverley Local Government Area. The report covers the period from 1 July 2006 to 30 June 2007.

This report is a supplementary document prepared in accordance with the *Local Government Act 1993* that is designed to support the comprehensive document prepared for 2001–2004.

This supplementary report is an update of the eight environmental sectors: land, aquatic systems, biodiversity, air, waste and resource recovery, noise, Aboriginal and non-Aboriginal Heritage, and social environment. For more detailed information see the comprehensive State of the Environment Report from 2001–2004.

WHAT IS A SoE REPORT?

A State of the Environment (SoE) report summarises the physical and social attributes of the Waverley environment while identifying the human impacts on our local environment in a financial year. It also provides information on all the activities conducted by Council and the community to protect and restore the Waverley environment, and is essentially a mechanism for reporting on progress towards environmental sustainability.

Comparing SoE reports from year to year enables Council to see improvements and identify areas that need attention in all sectors of the local environment. This then assists us to further protect the health and diversity of the environment for the benefit of current and future generations.

TOWARD SUSTAINABILITY

In partnership with our local community, Council has developed 31 sustainability indicators that best represent how the community wants us to measure our progress toward environmental sustainability. By comparing our progress in these key areas from year to year, we can monitor Council's movement toward achieving our corporate sustainability goals.

Key to Sustainability Indicators

↑	Positive movement toward sustainability
↓	Negative movement toward sustainability
↔	No progress toward sustainability
ND	Not determined

COMMUNITY VALUES

Community consultation is an integral component of SoE reporting. To assist with the development of our SoE report, Council conducted a telephone survey of Waverley residents to explore their knowledge, attitudes, skills, and behaviours with respect to environmental protection.

These findings will not only assist Council with our reporting requirements but will also help us to develop suitably targeted environmental programs for our local residents.

Major environmental issues identified by our residents include:

- beach pollution
- littering
- rubbish dumping
- motor vehicle emissions
- bushland protection
- increasing urban development
- recycling
- sewage discharge
- stormwater pollution.



Land

The Waverley Local Government Area (LGA) is located on Sydney's eastern seaboard, approximately seven kilometres from the central business district. It includes the localities of Bondi Junction, Queens Park, Bronte, Waverley, Bondi, North Bondi, Tamarama, Dover Heights and parts of Rose Bay. Waverley's position between the city and the sea is the key to its enormous attraction for residents and visitors. Waverley lies just south of the beautiful Sydney Harbour with its eastern boundary defined by the Tasman Sea. Dover Heights, arguably Waverley's most affluent suburb, enjoys views to the Harbour Bridge while the beachside suburbs of Bondi, Tamarama and Bronte, are among the most popular in Australia.

With an area of 9.3 square kilometres (km²) and a population density of 7333 people per km² Waverley is the most densely populated LGA in Australia after the City of Sydney. Despite our small area, Waverley boasts a rich and diverse mix of residential, business, and natural landscapes that attract local, regional, and international visitors.

Since the 1850s, a greater appreciation of the scenic and recreational values within the Waverley area has seen a steady increase in both residential and commercial development over industrial land uses. An increase in development has brought with it extensive land degradation in the coastal zone from adverse impacts such as land clearing, destruction of native vegetation, introduction of exotic weed species, erosion and increased urban runoff.

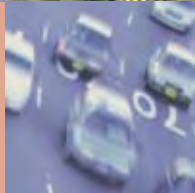
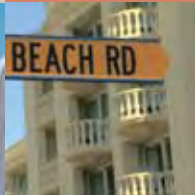
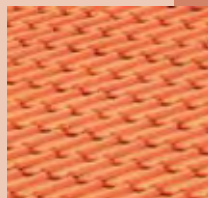
In response to these pressures, Council continues to develop environmental strategies within our corporate planning documents, policies, and environmental planning instruments that will ensure these impacts are minimised and the state of our environment is preserved for present and future generations.

PRESSURES ON OUR LAND

- Urban redevelopment
- Excessive land clearing
- Land degradation
- Contaminated sites
- Soil erosion
- Introduced species
- Visitation
- Beach erosion/shoreline recession.

SUSTAINABILITY TRENDS

Environmental indicator	02/03	03/04	04/05	05/06	06/07	Movement toward sustainability
Per capita of open space (ha)	0.0017	0.0017	0.0017	0.0017	0.0017	↔
Number of development applications approved by Council	1,081	1,011	1,093	1,020	1,014	↔
Residential Density (population per km ²)	6,889	7,369	7,388	ND	7,333	↔



RESPONSES TO THESE PRESSURES

- The design for Stage 2 of the Campbell Parade upgrade was finalised in the reporting period. Construction work to upgrade the beachfront strip on the eastern side between Lamrock Avenue and Beach Road was delayed due to a variation in the scope of works. However, work has now commenced with the preferred contractor. The upgrade will include landscaping, improved lighting and seating, wider footpaths and stormwater capture for irrigation of Bondi Park. The upgrade is expected to be completed by December 2007.
- Hall Street commercial centre was undergoing an upgrade at the time of this report. Local businesses elected to divide works over two winter seasons and Stages 1 & 2 were completed in December 2006. Work on Stages 3 & 4 (Consett Avenue to Campbell Parade) commenced in May 2007 and is due to be completed by September 2007.
- The intersection at Glenayr Avenue and Blair Street, North Bondi (commonly known as Seven Ways) has been upgraded. Stage 1 of the project involved the improvement of pedestrian and vehicle safety and the installation of time-limited parking. Stage 2 involved landscaping of the area.

- Council has prepared the Local Village Centres Project, which comprises the following three draft documents:

- Draft Waverley DCP 2006 (Amendment No. 1) Local Village Centres (provides future character objectives and planning controls for the private domain within the commercial centres and will be incorporated into the Waverley DCP 2006 once it is adopted by Council)
- Draft Public Domain Improvement Plan (PDIP) (identifies opportunities for enhancement of the public domain, and where possible identifies the potential for provision of more pedestrian space), and
- Draft Technical Manual (provides a coordinated approach to design and maintenance of the public domain).

These were placed on public exhibition until May 2007. The revised draft Part F5 – Local Village Centres was on re-exhibition until August 2007. On adoption of Waverley DCP 2006 (Amendment No. 1) Local Village Centres, Council will have to revoke the Bronte Commercial Centres Policy.

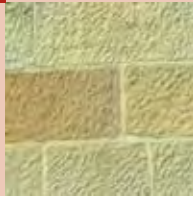
Since the 1850s... appreciation of scenic and recreational values within the area has seen a steady increase in both residential and commercial development over industrial land uses.





Land

- Planning Consultants commissioned by Council have undertaken the Bondi Junction Planning Review. The objective of this project was to prepare a new Local Environment Plan (LEP), Development Control Plan (DCP) and Public Domain Technical Manual (PDTM) for the Bondi Junction Commercial Centre. At the close of this reporting period the finalised draft plans were being presented to Council.
- The Consolidated Waverley DCP (WDCP) was approved in December 2006 and came into effect in January 2007. It applies to the whole local government area and provides the detail controls that support Waverley LEP 1996 and JLEP 1991 – Bondi Junction Commercial Centre.
- Hewlett Street Reserve in Bronte was upgraded in September 2006. Garden beds and trees were planted, new picnic tables and seating were installed, the playground was upgraded and a ramped path was constructed from Bronte Gully to Hewlett Street.
- Work on Sam Fiszman Park in North Bondi is close to completion. The carpark at the cul-de-sac in Ramsgate Avenue was closed to vehicular traffic to make way for the new park. The works include new terraced areas, steps, a circular raised turf area and viewing platforms. Work commenced in June 2007 and the project is anticipated to be complete in September 2007.
- A geotechnical manual is being developed for Waverley by Sydney Coastal Councils Group (SCCG). Geotechnical investigations have been undertaken and the completed manual is expected to be released sometime in 2008.
- Sydney Coastal Councils, which includes Waverley LGA produced a groundwater management handbook. This handbook provides a single resource to promote sustainable groundwater management for coastal areas in Sydney. It has been developed so that the technical and management information it contains can be applied throughout NSW, with a particular focus on the Sydney coastal region.
- The Draft Tamarama Park Plan of Management was adopted by Council. The plan was significantly amended following its initial public exhibition and after Council consideration in September 2006 it was re-exhibited in November 2006.
- Council – in collaboration with Woollahra Municipal Council and Australian Conservation Fund (ACF) – held the 'GreenHome Design and Renovations Expo' in September 2006. Speakers included a leading eco-architect, and information about rainwater tanks, solar hot water heaters, water-wise landscaping and garden design and energy-smart home design was distributed.
- Council's Sustainability Committee is currently reviewing Council's planning controls to better integrate sustainability into the DA process.
- There were 230 development applications determined during the fourth quarter, with a median turnaround time of 52 days – an improvement from last year.
- The concept design for Bondi Park Playground was reported to Council ahead of target in July 2006, with Council resolving to approve community consultation in July/August 2006. Construction of the Bondi Park Playground Upgrade commenced in May 2007. The new facilities include play equipment, a shade structure, a bike path and nature play setting, as well as a family picnic/barbecue area. The work was completed in August 2007.
- The Bondi Basin Master Plan was adopted by Council in May 2007, to provide a blueprint for improvements to the physical environment of Bondi over the next ten years. The plan lists the strengths of the Bondi Basin and the challenges it faces, provides details about future improvement projects, and provides a 'one-stop' framework for the large number of the existing land use, transport, heritage, culture, and other plans for the area.
- Stabilisation works on Tamarama Cliff started in May 2007 and were completed in July 2007.



- Council has commissioned consultants to undertake the Bondi Junction Pedestrian Access and Mobility Plan (PAMP). The aim is to improve pedestrian safety, mobility and access in Bondi Junction. A works schedule will be developed for key pedestrian routes and will identify future pedestrian works. The brief has been developed, a steering group established, and the first round of consultations held in June. The project is due to be completed by December 2007.
- A number of capital works projects have been completed throughout the year. These include:
 - footpath upgrades at Bondi Junction, particularly parts of Newland Street and Bronte Road
 - relocation of the Customer Service Centre to Spring Street in June 2007
 - asphalt resheeting program
 - Waverley Library Forecourt improvements including street furniture, paving, additions to pergola, and a raised tile-mosaic landscaped garden bed
 - refurbishment of the Bondi Surf Life Saving Club (in conjunction with BSLSC)
 - 46–48 Ocean Street social housing development (in conjunction with the Department of Housing)
 - affordable housing at 158 Carrington Road due for completion in September 2007
 - Bronte Pool rectification works and pool upgrade
 - Macpherson Street, Bronte improvements, including footpath upgrade, new street furniture, minor kerb adjustments and landscaping
 - Dover Heights cliff stabilisation.
- A school safety project was implemented, with construction of traffic control devices at several schools to reduce the speed of vehicles in 40kph school zones.
- Stage 1 landscaping of the Hunter Park Sculpture Park was completed in September 2006. Stage 2 of the upgrade is to include additional planting and the installation of artistic seating.



Waste and Resource Recovery

As people buy and consume

more products, the rate of waste generation increases. This general trend places pressures on the environment and Council's waste management systems.

People who visit, live in or work in Waverley, can reduce this impact by taking more responsibility for their waste. This involves actively avoiding waste generation, recycling more, and disposing of non-recyclable materials responsibly.

Council is constantly improving its capacity to handle waste efficiently and to reduce the initial generation of waste by implementing various corporate plans, strategies and education programs. Council regards a large percentage of waste as a valuable resource, and is continually increasing efforts to divert waste from landfill by improving resource recovery throughout the LGA.

Council employs a full-time Waste Education Officer to coordinate and expand educational programs in the community, schools and child care centres.

PRESSURES ON OUR WASTE SYSTEM

- Population increases
- Littering
- Increasing generation of waste
- Reduction in the availability of landfill space
- Subsequent increase in landfill disposal costs
- Cost of managing negative environmental impacts from landfill sites eg. leachate, greenhouse gasses
- Illegal dumping
- Reduced life span of goods, especially electronic
- Increased packaging of products
- Increased economic growth and consumption of goods.

RESPONSES TO THESE PRESSURES

- The total tonnes of waste diverted to recycling increased by approximately 4% in the reporting period. Although this may seem low, it was stated in the previous SoE report that any further significant increase in recycling is reliant on new technology at the recycling centres that would process additional material types.
- Council held two e-waste collection days (for electronic waste excluding white goods) in November 2006 and June 2007. The June collection was the third e-waste day held since the start of the program. The amount of e-waste collected has increased substantially: just over eight tonnes in November 2006 and just over 12 tonnes in June 2007. The 21 tonnes collected for the year is a 200% increase from last year. Residents dropped off 457 monitors, 258 hard drives, 213 printers, 211 televisions and a variety of smaller household items including toasters, mobile phones, coffee makers, and hair dryers.

SUSTAINABILITY TRENDS

Environmental indicator	02/03	03/04	04/05	05/06	06/07	Movement towards sustainability
Total tonnes waste to landfill (no recycling)	22,870	23,433	18,309	16,958	15,403.3	↑
Total tonnes waste diverted to recycling	7,351	7,572.4	8,394.7	10,493.9	10,886	↑
Tonnes of illegally dumped rubbish removed by Council	ND	ND	ND	805	650.6	↑
Total paper use (reams)	4,577	4,069	4,031	2,300	3,570	↓



- Three tours of the VISY Recycling Facility were offered to residents for World Environment Day and National Recycling Week. Approximately 50 residents attended the tours, held over three days. Participants were taken to the Materials Recovery Facility (MRF) at Taren Point, where some of the 10,886 tonnes of recycling that Waverley produces each year are sorted.
- Council continued to promote the free Household Chemical Cleanout Days for local residents. These are held twice a year and are run by the Department of Energy and Climate Change.
- Council employs a full-time Waste Education Officer to coordinate and expand educational programs in the community, schools and child care centres. Waste-related community workshops continued this year in partnership with the Eastern Suburbs Community College. School workshops were conducted through Council's Sustainable Schools Program. Workshop topics included Composting and Worm-Farming, and Green Cleaning.
- Council introduced a new 'Your-call' clean-up collection service in January 2007, which entitles residents to two free on-call collections of household items per year. It is anticipated that the flexibility of this new service will significantly reduce illegal dumping and subsequent stormwater pollution in Waverley. Scheduled household clean-up collections have been phased out.
- Smoking on our beaches has been banned for over two years. An education campaign has run since this ban, featuring 'our beaches are not ashtrays' postcards, stencilling and beach appearances by the 'Butthead' interactive performers in January 2007. A 'blitz' was also held in Bondi Junction in March as part of National Cigarette Butt Litter Day, with over 300 personal ashtrays given to shoppers. Windproof ashtrays were also distributed to cafes in Bondi Junction with outdoor eating areas.

Council is constantly improving its capacity to handle waste efficiently and reduce the initial generation of waste... Council regards a large percentage of waste as a valuable resource and is increasing efforts to divert waste from landfill...





Waste and Resource Recovery

- Council's Waste Avoidance and Resource Recovery (WARR) Action Plan 2007–2017 has been reviewed and was adopted by Council in March 2007. The plan outlines our approach to waste management strategies and actions over the next ten years. Of the WARR Action Plan projects identified for the 2006–2007 reporting period, 65% were implemented. These included an illegal dumping education program, increased Council greenwaste collections and auditing of public place bins.

Future actions to be undertaken by Council include:

- develop and deliver community education on correct presentation of domestic waste and recycling to increase resource recovery rates
- develop community education programs to reduce contamination levels of recycling
- develop community education programs to increase recovery rates for recyclables
- investigate feasibility of domestic organic waste collection trial
- develop and implement an education program that aims to reduce food waste
- develop education programs to reduce greenwaste production, through appropriate planting
- implement 'Bins on Footpath' policy
- develop and implement schools waste education programs to encourage lower waste consumption and increase recycling (five schools per year).

- Council adopted a Litter and Waste Management Action plan for the Bondi area in September 2006. The introduction of the 'Dumping. It's Dumb' education program to Bondi (and all of Waverley) was one of several activities implemented as part of this plan. Council and the City of Sydney received a joint \$50,000 grant to promote the DECC state-wide education campaign 'Dumping. Its Dumb' in April 2007. This involved promoting the message at bus stops, train stations, and billboards.
- An enhanced summer dumped rubbish collection program continued between November 2006 and March 2007. This was part of the Litter and Waste Management Action plan developed for the Bondi area.
- Bins at Bronte, Bondi and Tamarama Park were audited in June 2007 to establish a recycling baseline before starting the public place recycling trial. Following installation of new bins in 2007–2008, the audit will be repeated and the Public Place Recycling Trial evaluated.
- Clean Up Australia Day was held in March 2007. The event drew 100 volunteers and, for the second year in a row, Council sponsored volunteers to do an underwater clean-up off Ben Buckler. The administration and promotion of the day was outsourced by Clean Up Australia, and seemed to result in fewer volunteers.

- Council held information stalls to educate residents about responsible waste management. A worm-counting competition took place at Council's World Environment Day celebrations and 'Steel Can Steve' educated younger visitors to the event. During National Composting Week, free worm farms and compost bins were handed out to participants in a worm farming and composting workshop.
- Council worked with Visy and other regional Councils to create a 'Steel Can Steve' advertisement, to encourage people to recycle steel cans. This advertisement has been playing in Bondi Junction Greater Union for over six months.
- Council worked with seven other SSROC Councils to secure a grant from NSW Health to commence a regional 'Community Sharps' collection and education program. The incorrect disposal of community sharps in recycling bins was an increasing occupational health and safety (OH&S) concern for workers. Waverley has three participating pharmacies where sharps can be disposed of responsibly.
- Council employs a full-time Waste Enforcement Officer, to regulate illegal rubbish dumping and bins being left on footpaths. In the reporting period, 2,596 illegal rubbish dumps were reported and investigated, leading to ten penalty notices and 37 clean up notices being issued. There were also 102 incidences where the dumper was contacted, educated and the waste removed.



- Council developed a comprehensive information kit for real estate agents – outlining recent improvements to its collection service – to reduce illegal dumping in Waverley. The kits, which included brochures, leaflets and posters, were distributed in December 2006.
- The management of waste quantities and operation of the waste facility at Bondi Pavilion was reviewed and upgraded. Upgrades to the Bondi Pavilion Waste Room included removal of the Pavilion mural (lead paint) and repairing of the walls.

E-waste collection has increased substantially... with 21 tonnes collected for the year – a 200% increase from last year.



Aquatic Systems

Urban stormwater is the untreated run-off from hard surfaces such as roofs, footpaths, and roads. Stormwater flow is intercepted by engineered stormwater management systems that have replaced natural watercourses and streams over time. These management systems channel excess water away from urban areas to natural aquatic environments as a flood mitigation measure, often carrying pollutants such as nitrogen, phosphorus, metals (eg. copper, lead, zinc), and hydrocarbons. Other material such as faecal bacteria and grease can also be washed off surfaces into stormwater, all of which have adverse impacts upon the health of aquatic ecosystems.

The Waverley LGA has nine stormwater sub-catchments that drain into three major water bodies: Sydney Harbour, the Pacific Ocean and Lachlan Swamps in Centennial Parklands. Therefore, both the quantity and quality of stormwater generated within the catchment can have regional implications.

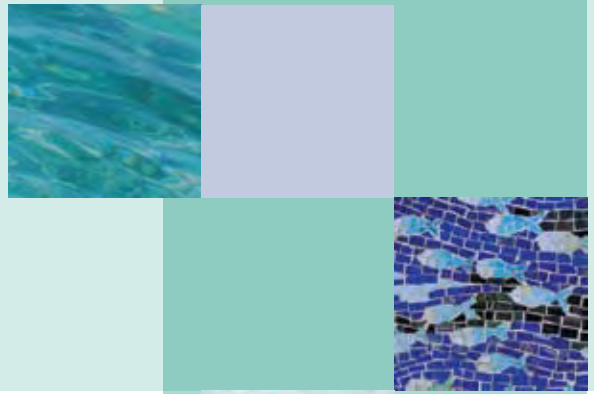
Human impacts within the catchment have increased the amount of litter, nutrients, bacteria, heavy metals, and sediment being discharged into the receiving water bodies, thus degrading the quality of our local aquatic systems. In response to these pressures, Council continues to develop integrated water management programs to focus on reducing the quantity and improving the quality of stormwater throughout the catchment. Integrated water management is one of Council's key corporate goals.

PRESSURES ON OUR AQUATIC SYSTEMS

- Bondi Sewage Treatment Plant (STP): problems due to lack of long term strategies to improve overall system capacity and water treatment capabilities.
- Ongoing environmental impacts from businesses.
- Vaucluse/Diamond Bay Diversion Scheme: untreated sewage is continuously discharged into the ocean from three cliff face outfalls, one of which is located within Waverley LGA at Diamond Bay.
- Pollution: 140 environmental pollution incidents were recorded in the reporting period.
- Sewer overflows: regular overflows from designed sewer overflow points throughout Waverley.
- Increased quantity of stormwater, increased development and reduction of pervious surfaces.
- Loss of biodiversity.

SUSTAINABILITY TRENDS

Environmental Indicator	02/03	03/04	04/05	05/06	06/07	Movement towards sustainability
Total water consumption in Waverley (kL)						
Community	6,228,058	6,842,007	ND	6,308,303	6,204,477	↑
Council	175,492	134,719	78,259	79,235	93,335	↓
Average compliance with EPA Beachwatch: Faecal Coliform	100%	97%	97%	98%	100%	↑
Average compliance with EPA Beachwatch: Enterococci	100%	83%	100%	93%	94%	↑
Number of pollution control devices (including trash racks & pit baskets)	80	96	96	96	96	↔



RESPONSES TO THESE PRESSURES

- Council has funded environmental projects through a levy since July 2001. Following expiry of this levy at the end of June 2006, Council obtained a five-year extension. The new program will continue existing work and help implement new, previously unfunded, environmental projects. While the previous focus was on improving quality and reducing quantity of stormwater in the area, the new environmental levy has a wider sustainability scope.
- Waverley Permanent Wave Business Program is a voluntary environmental assessment and education program designed to help local businesses reduce their environmental impact. In the past the program focused primarily on stormwater pollution. This year it was significantly revised to better respond to the needs of local businesses and expanded to include water and energy conservation, chemical and packaging alternatives, waste minimisation and green power. The revised program was implemented across the Charing Cross, Bondi Road and Bronte Beach business communities. Due to the more comprehensive nature of the program only 48 high environmental risk assessments were conducted this year.

- Council has developed a new water management component of the Waverley DCP 2006 and accompanying Water Management Technical Guidelines. Based on the principles of water sensitive urban design, these documents provide a policy and planning framework for safe and effective control, re-use and disposal of roofwater, stormwater, greywater, blackwater and groundwater within the Waverley LGA. The proposed amendments to the Waverley DCP 2006 and the Water Management Technical Guidelines are on public exhibition until the end of September 2007 and are due for adoption shortly thereafter.
- In the 2006-2007 financial year, 25 Environmental Management Plans were developed for Council's Maintenance and Construction operations. The development and implementation of these plans, as part of Council's Environmental Management System (EMS), ensure that Council's operations meet environmental best practice. This year, 80 staff from across Council's operations participated in EMS training. The Environmental Management Plans that were completed include Graffiti Removal; Spills Response Procedure; Compliance Strategy; Mechanical Workshop; Depot Wash Bay; Bronte Pool; Maintenance and Construction; and Resource Recovery.

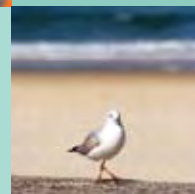
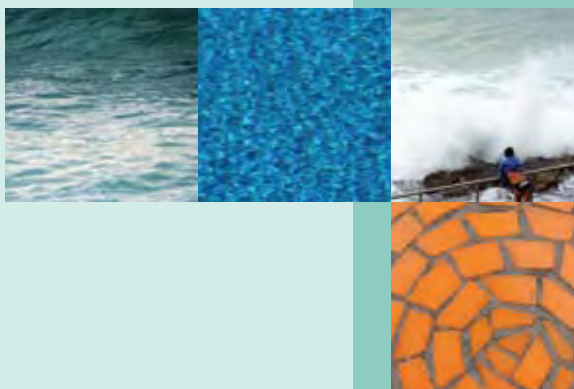


Council continues to develop integrated water management programs to focus on reducing the quantity and improving the quality of stormwater throughout the catchment.



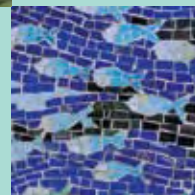
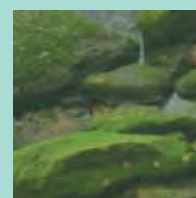
Aquatic Systems

- In the reporting period, two pollution incidents occurred as a result of Council's operations. This improvement – from three in the previous year – can be linked to the successful implementation of a system of site checks that assess and encourage compliance with Council's EMS.
- The Waverley Water Savings Action Plan (WSAP) was completed and adopted by the Department of Energy, Utilities and Sustainability in July 2006. Council's strategy was one of the first such plans approved by the Minister, and a range of water saving initiatives have already been introduced under the plan. Specific projects commenced in the Bondi Basin include the implementation of water saving features in the coastal amenities, lobbying of Sydney Water to investigate the feasibility of recycling sewage effluent for Council use at Bondi Sewage Treatment Plant, groundwater investigations at Biddigal Reserve in North Bondi and the installation of groundwater tanks for park irrigation at Barracluff Reserve.
- Council continued to offer free community workshops on chemical-free living, which will invariably reduce pollutants entering the aquatic environment. 'Green Cleaning' and 'Living with Less Chemicals' were very popular with the community as were the 'Water Savings at Home' workshops.
- Council set up a Sustainability Committee as a reference group to guide the implementation of its new Environmental Levy and ensuing programs. This committee is made up of elected Councillors and sustainability professionals who met for the first time in February 2007. They are committed to helping Council develop a sustainable community. The committee brings external expertise to expand Council's capacity to identify Waverley's impact on the natural environment. It will also develop policies and practices to reduce the ecological footprint of the area. The committee will meet quarterly and will hold other working sessions where relevant.
- Coordination and implementation of Council's Sustainable Schools Program continued throughout the reporting period. This program (funded by the Environmental Levy) helps Waverley schools fulfil the mandatory requirements of the Department of Education and Training Environmental Schools Policy. The Sustainable Schools Program facilitates an environmental audit of the entire school operations. The 'gaps' identified in each school's current operations form the basis of an Environmental Management Plan. The program has gained significant momentum this year, with half of Waverley schools participating to some degree.
- Council awarded grants of up to \$4,000 to Clovelly Public School, Rose Bay Secondary College and Galilee Catholic Primary School in November 2006. This scheme (funded by the Environmental Levy) was created to help schools implement their environmental ideas – particularly projects identified in their School Environment Management Plans, such as recycling bins and rainwater tanks or stages of larger projects like native gardens. Council received an enthusiastic response to these grants.
- A free workshop was held in March 2007, in conjunction with Master Plumbers and Mechanical Services Association of Australia, to give plumbers a free listing in the *GreenPlumbers Directory*. The workshop focussed on home water audits, water-efficient products, new developments in technology, government rebate schemes, stormwater, sewerage and water quality issues.
- Two community workshops, on water conservation and alternatives to chemical cleaners, were aimed at the hard-to-reach seniors group. Both workshops were well received and well attended.



- Council's Environmental Levy partly funded a Water Sensitive Urban Design (WSUD) demonstration project at 158 Carrington Road. When complete, this will be an environmentally-efficient aged housing facility that includes rainwater harvesting and reuse, a porous pavement demonstration and solar hot water. The project is near completion.
- Council has installed new water-saving features at Marks Park and Bondi Beach South. Rainwater tanks and waterless urinals have been installed in the two high-use public amenities at these locations. A 6,000 litre rainwater tank was installed at Marks Park and a 4,500 litre tank at Bondi Beach South. The rainwater from these tanks will be used to flush toilets in the amenities blocks. Timer taps have also been installed in the Marks Park amenities block. Overall, these water saving features are expected to reduce drinking water usage at Marks Park and Bondi Beach South amenities by 34% and 18% respectively each year. This amounts to an estimated saving of 2,763,960 litres of drinking water each year.
- Council has commenced a Water Sensitive Urban Design (WSUD) demonstration project at Waverley Council Chambers. This project, funded by the Environmental Levy, includes rainwater harvesting and reuse and a porous pavement demonstration. Captured water will be used for park irrigation and toilet flushing while surface water will infiltrate into the ground to replenish groundwater reserves.
- Groundwater storage tanks have been installed at Barracluff and Waverley Parks for use by Council operations. This Environmental Levy-funded project is expected to save 16,000,000 litres of drinking water each year and improve irrigation at Waverley Oval and Barracluff Park. Council received \$74,900 from the NSW Government's Water Savings Fund to help finance this project.
- Council is currently working with Sydney Water and consultants as part of the Every Drop Counts Program to determine best practice irrigation for playing fields. This will ensure our precious water is not wasted.
- Council's education campaign 'Our Beaches are not Ashtrays' was implemented in January 2007 to minimise cigarette butt littering on beaches. This has had significant environmental benefits including cleaner beaches, improved water quality and reduced harm to sea life.

Council has installed new water saving features at Marks Park and Bondi Beach South. Rainwater tanks and waterless urinals have been installed in the public amenities...



Aquatic Systems

- Council has commenced a stormwater harvesting and re-use project in Bronte Gully (funded by the Environmental Levy). An underground tank will capture stormwater from the creek before it flows into the ocean. The water will then pass through an ultraviolet treatment system to remove any pathogens. Once purified, it will be used to irrigate the park and Bushcare area and flush toilets in the Bronte Park amenities blocks. In addition, a geotechnical study was undertaken to investigate ways to curb creek and bank erosion. The development application has been submitted for Part 1 of this project and Council is currently awaiting its assessment.
- In July 2006 Council resolved to replace the Integrated Stormwater Management Plan with a Sustainability Plan and adopted the LA 21 framework to facilitate its development and implementation. In August 2006 Council won an Urban Sustainability Grant to fund the preparation of the plan, but due to funding agency specifications, the project could not commence until February 2007. Completion has been revised to April 2008.
- Council continues to appoint external contractors for cleaning of our gross pollutant traps, which occurs approximately four times per year. Council (with the use of its suction truck) also regularly carries out pit cleaning. This maintenance is important in reducing aquatic pollution as it prevents a significant amount of waste from entering the aquatic environment.
- Council continued weekly water monitoring of two ocean pools as part of the Beachwatch Water Monitoring Program. Council also conducted regular water quality snapshots of all stormwater outlets to monitor water quality, isolate problem catchments, and identify pollution sources.
- Council continued to support the Marine Discovery Centre at Bondi Beach Pavilion, to raise awareness about conservation of coastal areas. Council has supported the development of an interactive stormwater education display at the centre which is due to open in November 2007.
- Council continues to implement the Southern Sydney Regional Organisation of Councils (SSROC) Soil and Water Management Program. This program aims to prevent degradation of waterways and stormwater systems by minimising the loss of soil and building materials from construction sites.
- Research began in 2007, in collaboration with National Parks Association Coast Keepers Program, to develop a public database of fish species in our LGA. This state-wide community monitoring project enables divers to monitor Sydney Harbour and NSW marine life, and allows divers, the wider community and environmental managers to view results on interactive maps or through species searches.
- Council resolved to support the Department of Primary Industry's request to enter into a Joint Operation Agreement for the cooperative management of the Bronte to Coogee Aquatic Reserve. The development of a management plan commenced in early 2007.
- Council officers attended eight Sydney Water Environment Group meetings this year. In addition, Council progressed significantly in lobbying for recycled water provision to irrigate local parks and golf courses, with feasibility work currently underway.

Council continued to support the Marine Discovery Centre at Bondi Beach Pavilion, to raise awareness about conservation of coastal areas.

Social



Creating a sustainable community which meets the lifestyle needs of all existing and new members requires careful planning so that accessible community services and facilities continue to support Waverley's rich social fabric. To achieve this, Council must ensure planning processes and strategies contribute to the maintenance and improvement of our social, natural and physical environments for everyone to enjoy.

Waverley Council is committed to delivering a high standard of strategic and social planning activities. Based on demographic profiles and needs analysis, strategies and actions are developed in response to priority issues and concerns. The details of Council's social planning process and action plan are integrated into the Waverley Strategic Plan. The plan is based on extensive consultations with residents, service providers and consumers of services in our local community.

PRESSURES ON OUR SOCIAL ENVIRONMENT

- Increase in aging population
- Housing affordability
- Lack of recreational facilities for young people
- Affordability of child care services
- Crime
- Community safety.

RESPONSES TO THESE PRESSURES

- Council ran its third Safe Summer program this year, which is a community safety model to manage the impact of increased crowds visiting Waverley's coastal reserves. Safe Summer again included a broad communication and education campaign (including a 32 page 'My Bondi Summer' booklet); education and enforcement of alcohol free zones; and provision of safe, alternative environments and events to manage crowds and alcohol consumption. Christmas events included the 'Gatecrasher' party at Bondi Pavilion and New Year's Eve celebrations consisted

Waverley Council is committed to delivering a high standard of strategic and social planning activities.

SUSTAINABILITY TRENDS

Environmental Indicator	02/03	03/04	04/05	05/06	06/07	Movement towards sustainability
Number of affordable housing units	56*	20	25	46*	82*	↑
<i>Number of community volunteers participating in sustainable activities and related activities:</i>						
Community clean ups	ND	96	105	400	100	↓
Bushcare programs	105	106	106	86	154	↑
Environmental Levy programs	859	297	1,755	4,778	7,432	↑
Environmental Courses	48	419	730	374	421	↑
Number of residents in precinct forums**	2,065	1,532	1,473	1,318	1,215	↓

* These figures are a total of both Affordable Housing and Social Housing (others are for Affordable Housing only)

** There are variations in figures due to different methods of calculation



Social



of the 'Shore Thing' dance party at Bondi Beach and a family-friendly event at Dudley Page Reserve. Family-friendly activities also took place at Bondi Beach between Christmas and New Year's Eve. These safe managed events form an important part of Council's overall community safety strategy. Many compliments and very few complaints were received regarding the events and activities held during the campaign.

- Council staff and Waverley Police officers carried out safety audits around Bondi Beach in August 2006 and February and April 2007. Informal audits were also undertaken in December 2006 and January, May and June 2007. These were conducted at night and used proven crime prevention principles through environmental design to minimise opportunities for crime. Actions taken so far include ensuring public spaces are well lit; trimming trees to prevent shadow; removing graffiti; ensuring houses display prominent numbering; and removing obstructions to footpaths and other public spaces. The assessment also helps Council and Police develop crime prevention programs.
- Council has finalised the Draft ArtsPlus Plan to promote arts and culture in the community. It aims to encourage vibrant cultural activities and build on our strong sense of civic pride. The initial consultation stage was commenced in the reporting period. However, the process has been held back until a Cultural Planner is appointed. This position is due to be assigned in October 2007.
- 'Operation Beachsafe' took place over summer 2006-2007 in an attempt to prevent antisocial or criminal behaviour at Sydney's beaches. Police patrols targeted Cronulla, Bondi, Maroubra and Brighton Le Sands. Police were supported by additional resources at sea, on land and in the air.
- A 'Beach Theft' strategy was developed in March 2007, funded by the Attorney General's Crime Prevention Division. The campaign is planned for Bondi, Bronte and Tamarama over summer 2007-2008.
- Council's new Civic Pride program commenced in September 2006, with a number of projects to encourage residents to be involved in their community and improve the amenity of their area. A Civic Pride Coordinator was appointed, and projects have so far included:
 - Adopt a Tree program, developed and implemented with initial plantings in Brighton Boulevard
 - Pocket Parks program which is yet to be implemented
 - Waverley Civic Pride Awards, celebrating community initiatives. The awards now incorporate the Heritage and Design Awards, Bondi Junction Business Awards and the Access Awards, while the new Sustainable Garden Awards were reported to Council in August 2007
 - O'Donnell St Park project, featuring significant community consultation, including a focus group with young people. Improvements to this small park are being undertaken in consultation with the local community who will also help with planting
 - Footpath Garden Policy
 - Development of a new website to better communicate with residents, due to be completed by March 2008.



- Waverley celebrated Harmony Day in March 2007 with a reading for children at Waverley Library. A Harmony Day poster exhibition was also held, featuring art which celebrates our culturally diverse society. Waverley participated in a combined effort with Randwick, Woollahra and Botany Councils for the 'Youth Embrace Harmony' launch in Maroubra.
- Work on an alcohol awareness project 'Wake Up Waverley' is well under way and due to be completed by December 2007, in time for summer. The project comprises backpacker education on 'safe serving of alcohol' laws in Australia, education resources for parents on young people and alcohol, outreach to young people, street safety audits and strategies to address binge drinking.
- Four Bondi Live Youth Music Program (BLYMP) concerts were held at Bondi Pavilion in September and November 2006, and May and June 2007. They were attended by 145, 270, 201 and 95 people respectively. Other youth-friendly events included a 'Bondi Wave' concert, 'Busk Off' (held in November 2006) and 'Petals and Pavers Art' at Bondi Junction.
- This year's 'Bondi Blitz' concert at the Bondi Skate Park was organised as part of Youth Week. The live music event for young people was well attended and included food stalls, dance performances, bands, DJs, surfing lessons, and a skate demonstration.
- Council continued to support the Waverley/Woollahra Youth Advisory Council (WWYAC). This group of young people from the local area meet monthly to advocate youth issues. They also decide on the theme for discussion at the Youth Forum. This year's Youth Forum, with 'Crisis Intervention' as the theme, was effective and well received by young people.
- Programs for young people in Waverley, organised through the Bondi Pavilion, exceeded the target for the year. Activities on offer included four school holiday programs, after-school pottery classes (three per week during school terms), Bondi Wave Youth Music workshops plus the 2007 Bondi Wave May seminar, the Emerging Artists Music Program, the Primary Age Band Project, Festival of the Winds – pre-Festival Workshop Program and the Waverley Council Youth Art Award.
- In addition to Council's programs for young people, local artists, performers, tutors and organisations were assisted to provide a range of exhibitions, workshops and theatre performances for young people. During the past quarter, this has included music, art, dance, drama workshops, the Urban Arts Base Youth Week exhibition, Bondi Openair Big Kids Festival and two Shakespeare productions (for school studies), which attracted large numbers of young theatre-goers.
- Work is ongoing to complete Council's Recreation Needs Study, which aims to provide recreation opportunities in response to community needs. Community and clubs surveys, focus groups (including those with young people and speakers of Russian and Italian) and consultations have been completed. The study also considered the use of non-Council facilities for recreational purposes. Work continues on potential partnerships and collaboration to expand these opportunities. Facilities included those provided through schools, community organisations and clubs.
- Council's Graffiti Management Team has been operating since October 2006. During this time all offensive graffiti has been removed within the service standard and all Council-owned buildings inspected and graffiti removed on a weekly basis. A listing of 100 'hot spots' was created, identifying areas that are continually being graffitied. The nominated sites were subject to a six-month trial, where any additional graffiti appearing after cleaning was removed quickly.
- A free Coastal Nature Walk was once again held as part of the Summer Activities program, with a highlight being a discussion of local bush tucker.



Social



- Council began share hosting the position of Coordinator for the Eastern Region Local Government Aboriginal and Torres Strait Islander Forum (from April 2007, for two years). The group meets every two months throughout the year.
- Council celebrated National Reconciliation Week in May 2007. This year marked the 11th anniversary of National Reconciliation Week, and had the theme 'Their Spirit Still Shines'. Reconciliation is celebrated every year with the Eastern Region Local Government Aboriginal and Torres Strait Islander Forum, consisting of six Councils. This year the events were hosted by Leichhardt Council. The Pauline McLeod Award for Reconciliation, recognising quiet achievers working towards reconciliation, was presented in May. A children's art competition was also held in May to recognise reconciliation.
- Also in May 2007, Council made a commitment to establish a plaque acknowledging the stolen generation. The plaque is to be erected at Bondi Beach in the next reporting year.
- Council celebrated NAIDOC week in July 2006 with banners in Bondi Junction Mall and exhibitions and activities at Bondi Pavilion and Waverley Library. Children from Bronte Child Care visited the Gujaga Aboriginal Child Care Centre at La Perouse and a contribution was made to support Aboriginal Youth Group celebrations.
- The Aboriginal Heritage Officer from La Perouse Local Aboriginal Lands Council was involved in the consultation process for the upgrade of both Campbell Parade and Sam Fiszman Park.
- Waverley celebrated International Day of People with a Disability in December 2006. Council hosted 'About Us – a Party at the Pav' at Bondi Pavilion which featured the premiere screening of a new documentary on The Junction House Band, followed by a live performance by the band. The NSW Department of Ageing, Disability and Home Care (DADHC) have once again coordinated this community awareness campaign 'Don't DIS my ABILITY', which highlights the positive energy and attitude of the disability community during November and December 2006. More than 150 events took place across regional and metropolitan NSW as part of this campaign.
- Approximately nine Frail Age Programs were conducted per month for older people and people with a disability at Bondi Pavilion. An overall average of 1625 people participated in programs and activities at the Seniors and Community Centre for the year.
- Waverley Council is committed to improving access and services for people with disabilities through its Disability Action Plan and Access Policy.
- Council continues to operate its Waverley Community Living Project (WCLP). This service provides medium-term subsidised accommodation, independent living skills training and transition support to enable people with mild intellectual disability to move towards independent living in the Waverley community. Council has supported approximately 12 people with disabilities over the year and the program is currently operating at full capacity. In late June 2007 WCLP was successful in receiving recurrent viability funding from DADHC.
- 18 'Learning for Life' courses were conducted. The 'Intellectual Disability Rights' reunion was held and 'Protecting Yourself from Abuse' workshops were well received.
- Approximately six subsidised rental accommodation places were available for people with mild intellectual disability. A new 'Eastern Suburbs Disability Interagency' has also been established. Part of this role is to provide ongoing information exchange opportunities within the disability industry.
- The number of units in the Waverley Housing for Older People Program has increased this year to 51 units. A total of 31 units have been generated in the Affordable Housing Program (AHP).



- Approximately 50 affordable accessible cultural programs were held at Bondi Pavilion this year. Activities include NAIDOC Week activities, Refugee Week activities, Festival of the Winds and the pre-Festival Workshop program, Ocean Care Day with the Pacific Arts Festival, Carols by the Sea, Seniors Christmas Concert, The Pavilion Potters Exhibition, the South American Festival, the Pavilion Music Program (including the Emerging Artist Program, Seniors Band, Bondi Community Choir, Children's Rock Band, Senior's Singing Group), Bondi Wave Youth Music Workshops, the Bondi Wave Concert, BLYMP concerts, monthly Seniors Concerts, the Youth Art Award, regular classes program, Pottery Workshop Program and School Holiday Program.
- Three events targeting culturally and linguistically diverse (CALD) and Aboriginal and Torres Strait Islander Communities were held this year. Council is developing a database to document existing participation of CALD community. At least 20% of major consultations this year included strategies to target the CALD community with focus groups conducted with the Russian and Italian communities for Council's Recreation Needs Study and consulting with the Russian community for the 6 Ways project undertaken.
- A review of Council's Language Aids was undertaken in June 2007. Council is moving towards having additional bilingual staff accredited as Language Aids.
- Council updated its Translations Register in May 2007. This is a collection of all Council documents that have been translated for the CALD community.
- Council's Multicultural Policy has for the first time been included in Council's Management Plan, of which a second update was undertaken in May 2007.
- The fourth annual Global Table Multicultural Street Festival was held in April 2007 in Oxford Street Mall. This annual event is a celebration of food and music from around the world, and has steadily grown since it started in 2004.
- Council's Community Grants Program provided nearly \$250,000 to local community groups targeting youth, older people, children and families, people with disabilities and those from a CALD background. In addition, nearly \$45,000 was provided to groups delivering one-off community and cultural projects.
- The Waverley Social Plan 2005-10 is now available to the public. This plan is a combination of two documents – the Waverley Social Plan Volume 1: Community Profile and Waverley Social Plan Volume 2: Social Planning Issues Papers and Action Plans and brings together research and analysis carried out over the past five years. These documents help us to understand aspects of life for people in Waverley and include analysis of demographic data and a study of the changing political and social conditions of the area. This in turn allows us to pinpoint emerging issues and map out directions and activities for the next five years. The Social Plan is updated at least once a year.



Air

The Waverley area is a densely populated urban environment. Our proximity to the city makes us particularly vulnerable to the effects of air borne pollutants.

It is estimated that around 1.2 million tonnes of pollutants enter Sydney's air each year. Motor vehicles are responsible for 75% of these pollutants, with the remainder being attributed to industrial and domestic sources. Research has shown that due to Sydney's coastal location, coastal wind patterns transport air pollutants out to sea overnight and in the early morning. Afternoon sea breezes then transport these pollutants back onto land and

concentrate it in the Sydney Basin. Improving our local air quality has been a commitment of Council since the early 1990s when Council adopted the Waverley Local Air Quality Improvement Plan (LAIP). In 2002, Council adopted the Waverley Greenhouse Gas Reduction Strategy to set future direction for air quality management and pollution reduction in Waverley.

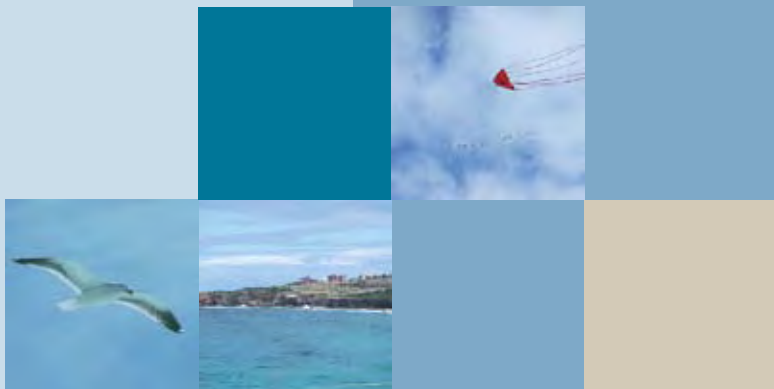
Since the early 1990s, Council has continued to implement innovative air quality improvement programs such as trialling Compressed Natural Gas (CNG) in heavy and light fleet vehicles, incorporating

hybrid electric cars into our corporate fleet, developing a local action plan to reduce our greenhouse gas emissions, and placing a prohibition on the use of wood fire heaters throughout the LGA. Waverley has also been one of the few Councils in Australia to complete the five milestones of the Cities for Climate Protection (CCP) program aimed at reducing corporate and community greenhouse gas emissions, and then progress onto the CCP Plus Program.

SUSTAINABILITY TRENDS

Environmental Indicator	02/03	03/04	04/05	05/06	06/07	Movement towards Sustainability
Greenhouse gas emissions savings (tonnes of CO ²) from Council activities	3,037	3,265	4,898.2	14,976.4	16,904.19	↑
Total energy saved through Council initiated projects (kWh)	371,273*	NO SAVING – used an additional 738,817*	131,600*	NO SAVING – used an additional 444,841*	2,240,271	↑
No. of vehicle registrations in Waverley	29,870	30,874	31,322	32,128	32,756	↓
No. of resident trips on public transport (patronage per average weekday)						
• Bus						
• Train	ND	14,814	ND	19,517	16,811	↓
• Ferry		26,796		29,539	31,042	
• Light Rail		2,600		3,119	3,124	
TOTAL		330		222	ND	
		44,540		52,397	50,977	
No. of resident trips on public transport (patronage per average weekend)						
• Bus						
• Train	ND	6,338	ND	5,320	4,713	↑
• Ferry		19,952		13,820	17,157	
• Light Rail		2,965		1,808	1,826	
TOTAL		0		0	0	
		29,255		20,948	23,696	
Total km of cycleways in the LGA (km)	ND	29.5	29.5	29.5	29.5	↔

* These figures have been recalculated as we now have greater accuracy in results due to changing methods of data interpretation. The figures show a reduction in consumption from the previous year.



PRESSURES ON OUR AIR

- Motor vehicle emissions
- Commercial business operations
- Wood fire heaters
- Construction and demolition
- Pollution
- Global warming
- Bondi Sewage Treatment Plant
- Increasing cost of public transport.

RESPONSES TO THESE PRESSURES

- Waverley Council's first 'Walking School Bus' which was piloted by Bondi Public School in May 2006, has continued to operate throughout the year with ongoing support from Council. Bronte Public School commenced a similar program in August 2007. The program involves children walking to school in small groups, led by designated parent 'walking drivers'. It reduces the car trips made to local schools and helps children and their parents lead healthy lifestyles through regular exercise. During the reporting period, Council also coordinated 'Walk Safely to School Day' in May 2007, with over 700 children from six schools participating.
- Additional bike lock-up loops have been installed outside the Mill Hill Centre and the new Customer Service Centre in Bondi Junction to further encourage bike use.
- Council conducted six free community education sessions in the last year focussing on bicycle maintenance, skills and commuting. This was the first time these workshops were offered to the local community, aiming to encourage residents to use bikes as a means of transport. Workshops included a 'Back on your Bike' session for beginners, 'General Bicycle Maintenance' and 'Commute by Bike', a more advanced course on safe cycling on the roads. The sessions were well received and well attended.
- The Waverley Bike Plan has been developed to encourage an alternative to private car use. Design Plans for Stage 2 of the Bondi Beach to Bondi Junction Bike Plan were completed and tenders called for construction. Construction commenced in April 2007 and works are due for completion by September 2007.
- Council submitted its draft Energy Savings Action Plan (ESAP), a four-year energy conservation action plan for Waverley Council, to the NSW Department of Energy, Utilities and Sustainability (DEUS) in November 2006. The action plan (a statutory obligation) schedules energy-saving projects for completion by Council to reduce both corporate energy consumption and greenhouse gas emissions.

In 2002, Council adopted the Waverley Greenhouse Gas Reduction Strategy to set future direction for air quality management and pollution reduction in Waverley.



- Council participated in the National 'Walk to Work Day' in October 2006. Over 60 staff took part, walking a total of just over 200km. An estimated 40kg of CO² was saved by walking this distance instead of driving.
- Following Council's completion of Milestone 5 of the International Council for Local Council Initiatives (ICLEI) Cities for Climate Protection (CCP) Program, Council progressed to ICLEI's CCP Plus Program in April 2006. Through the completion of these milestones there have been a number of local action plans implemented to reduce emissions. Waverley Council is committed to reaching the 20% reduction target on 1996 emissions by 2010. Participation in CCP Plus provides Council with technical support, access to CCP software and tools, and resource material. Council has completed and been awarded the organisational review milestone and has been accepted into the CCP Plus Sustainable Transport Advancing Action project. Council's Sustainable Transport Action Plan was in development stage at the time of this report.
- Council continues to participate in Sydney Coastal Council Group's Climate Change Adaptation Project. This Australian Greenhouse Office (AGO) funded regional project, in collaboration with CSIRO and the University of the Sunshine Coast, researches regional approaches to managing climate vulnerability in the Sydney region. Researchers will work with Councils to identify key vulnerabilities and their capacity to adapt in order to manage these climatic risks at a regional scale.
- Waverley was the first Council in Australia to purchase green power for corporate energy uses. Council continues to purchase 25% of our energy requirements from alternative green energy sources (including solar, wind, hydro and landfill gas) in five of our highest energy using corporate buildings. These buildings include Council Chambers, the Library, the Depot, Eastgate carpark and Bondi Pavilion. This equates to a reduction of 994.91 tonnes/year through green power purchase.
- The Waverley Transport Policy has been under review with the intention of reducing overlapping information and actions. From this, an Integrated Transport Plan is being developed. All actions were collated and reviewed and a final prioritising and allocation of stages has been determined. It is anticipated that the Integrated Transport Plan will go to Council in September 2007.
- A Greenlinks pilot project was implemented in 2006 as part of the Waverley Transportation Policy 2001. Of this, the planning and consultation stages have been completed. Six pedestrian links in the local government area were identified in the Greenlinks study which was adopted by Council in June 2006. At the end of June 2007, the design stage of the first two links had been carried out. Construction and maintenance of the remaining links is due for completion by June 2008.
- Council undertook several initiatives to reduce energy consumption from Council facilities. One such project included participation in the Earth Hour community event with a petition to the Federal Government to sign Kyoto. Another was switching off Council's non-essential building, park and beach lights. A lighting upgrade of Council's facilities, and a sustainability review of Bondi Pavilion were also undertaken.
- To further reduce energy consumption from facilities, Council's parking meters have been refitted to solar power.
- In November 2005 a report was prepared to investigate the feasibility of Light Rail following approaches from City of Sydney and Canada Bay Councils regarding co-operative action from inner Sydney Councils with both the state and federal governments. Council considered the report in December 2005 and resolved to participate in the establishment of an Inner Sydney Light Rail working group. A Light Rail Working Group was established in the reporting period. The working group is called Inner Sydney Transport Forum and includes the City of Sydney, Randwick, Woollahra and Waverley LGAs.



- A fridge buyback program was undertaken in the reporting period, for safe removal of under-utilized and energy draining fridges. Stages 1 and 2 of the scheme saw 42 fridges collected from the Waverley area between September 2006 and June 2007. The total tonnes of greenhouse emissions avoided (based on an average fridge life of eight years) is estimated at 380 tonnes of CO². The total kilograms of metal recycled, based on an average of 90kg of metals recycled per fridge was calculated to be 3,780 kg.
- The Building Sustainability Index (BASIX) was introduced in 2006 by the NSW Government. This State Environment Planning Policy ensures homes are designed to use less potable water and be responsible for fewer greenhouse gas emissions by setting energy and water reduction targets for houses and units. BASIX now applies to all new residential dwellings, including single dwellings, villas, townhouses and low-rise, mid-rise and high-rise developments in NSW. It also covers all residential alterations and additions throughout NSW. In July 2006, the BASIX energy target was increased to a 40% reduction in greenhouse gas emissions.
- Council continues to deliver our Sustainable Schools Challenge program that assists our local schools to reduce their overall natural resource consumption. Energy reduction is a key focus of the program.
- Council continues to comply with its Environmental Management System (EMS) for Council fleet vehicles. The EMS ensures best possible environmental and economic practices are implemented for the operation, maintenance and purchase of Council's vehicle fleet.
- Council has made changes to payments of leaseback vehicles. The leaseback payment amount now reflects consumption figures for the vehicle. The new payment structure is a three-tiered system, with payments of smaller vehicles less than those for the larger two-litre vehicles.
- Council continues to monitor vehicle emissions of its fleet. Six various passenger vehicles are tested by the RTA each November, including petrol, gas and hybrid vehicles.
- Following trials of hybrid fleet vehicles, Council now owns four Toyota Prius vehicles.
- Council continues to operate 16 Hino trucks in the Resource Recovery collection fleet. The Hino trucks have carbon monoxide exhaust reductions of 53% compared to the old trucks.
- In partnership with the Australian Greenhouse Office, Council undertook trials of compressed natural gas trucks (CNG) as part of the vehicle fleet. Subsequent emission testing has revealed a 57% reduction in hydrocarbons, a 49% reduction in nitrous oxides and a 93% reduction in fine particulate matter. Council currently has four CNG trucks in its fleet.
- The Southern Sydney Regional Organisation of Councils (SSROC) Street Lighting Initiative (SLI) program successfully applied for \$4.2 million in funding under the NSW Government's Energy Savings Fund. Approximately \$80,000 will be spent in the Waverley LGA to install energy efficient street lighting. This initiative is now being implemented across the SSROC Councils.
- A Council-owned building, leased to Spotlight, has recently been upgraded to energy efficient lighting. This is expected to save an annual total of 140kg of carbon dioxide equivalent.



Biodiversity

‘Biodiversity’ refers to the variety of all life forms present, such as the different plants, animals and micro-organisms, the genes they contain, and the different ecosystems in which they are found and form part of. It is important to conserve biodiversity to protect the life-support systems on earth. These systems include fresh water provision, climate regulation, the creation of soils, and the natural disposal of pollutants. They are fundamental to our quality of life and our economy.

The Waverley natural environment has undergone significant change in response to the pressures of residential, commercial and recreational use. The few remaining areas of remnant and planted vegetation play an important role in the area, especially in terms of providing food, habitat and shelter for native animals.

Waverley LGA boasts 112 hectares of open space covering 82 parks and reserves. Of this approximately six hectares is native remnant vegetation. Small areas of remnant bushland that provide important refuges for native flora and fauna are also located on private properties throughout Waverley.

In Waverley, the Eastern Suburbs Banksia Scrub is listed as an endangered ecological community under the *Threatened Species Conservation Act 1999*. This isolated site is located on the York Road boundary to Centennial Parklands.

The wattle, *Acacia terminalis ssp termanalis*, is listed under this legislation as an endangered species. The exact location of this rare plant in the Waverley LGA is now difficult to ascertain, although it is expected that dormant seed exists in several different locations.

PRESSURES ON OUR BIODIVERSITY

- Noxious weeds
- Land clearing
- Stormwater pollution
- Fragmentation of remnant bushland
- Exotic plants spreading from private gardens
- Illegal dumping
- Feral animals
- Illegal tree removal
- Companion animals.

RESPONSES TO THESE PRESSURES

- The number of volunteers participating in Waverley Council’s Bushcare Program increased in the reporting period by 79%. There are now six Bushcare groups in the area, at Diamond Bay Reserve, Eastern Reserve, Hugh Bamford Reserve, Tamarama, Bronte Gully and Calga Reserve.
- This year 1,086 native plants were planted by volunteers – an increase of nearly 560 plants. This was partly due to the involvement of corporate organisations in Bushcare activities.
- National Tree Day was held on Sunday 30 July 2006, with planting at Rodney Reserve, Dover Heights. Over 60 volunteers attended and planted 550 native shrubs and groundcovers.
- Bush regeneration occurred at Hugh Bamford Embankment in North Bondi which was partly funded by Sydney Water. Work included weed removal, erosion control, mulching, and maintenance of previously landscaped areas and more resilient areas. Work will continue on the embankment and will be funded by Council.

SUSTAINABILITY TRENDS

Environmental indicator	02/03	03/04	04/05	05/06	06/07	Movement toward sustainability
Area of bushland in active care of Council and community (m ²)	1,319	1,843	2,209	2,243	5,240	↑
Number of native flora species identified in Waverley LGA	154	154	154	154	154	↔
Number of native fauna species identified in the Waverley LGA	93	93	93	93	94	↑



- Bitou Bush and exotic vine control was undertaken at Diamond Bay, Vacluse. The Sydney Metropolitan Catchment Management Authority (CMA) awarded Waverley Council \$10,000 for Bitou Bush control (funded through the Australian Government Natural Heritage Trust). Council matched the contribution of \$10,000. Work occurred next to the Cliff Top Walk, north of Kimberley Street, removing areas of Bitou Bush and planting natives in areas of low resilience. Further funding will be received from the CMA for maintenance in the next year.
- Council funded bush regeneration at Bronte Cutting. The previously eroded and weedy slope was planted with natives, Asthma Weed was removed, and the exotic understorey was removed and replaced with native vegetation.
- Bush Regeneration Contractors removed weed at Eastern Reserve, Dover Heights. This was funded through an Environmental Trust Grant and will continue for an additional two years.
- Bush Regeneration Contractors assisted in the maintenance of the National Tree Day planting sites at Rodney Reserve, Dover Heights. This was also funded by an Environmental Trust Grant which will continue for two more years.
- A Bronte Gully site, established with funding from the Australian Government's Envirofund, now forms an extension of the Bronte Gully Bushcare site. Council funds the maintenance of this site and this will continue for a further year.
- Erosion control and tree planting (funded by Sculpture by the Sea) took place in an area along the Coastal Walk below Wilga Street. The native plant cover is now estimated at 30% on the heavily eroded slope and further work is expected in the next year.
- Control and eradication of Alligator Weed continued at Bronte Park. Waverley Council undertook this in collaboration with Botany Bay Council, Canterbury Council, Rockdale Council, Strathfield Council and DECC. Eradication was carried out by a contracted weed control company and the work will continue into the next reporting period.
- Council continued to offer free environmental workshops for the community in conjunction with the Eastern Suburbs Community College. 'Gardening with Native Plants' continued to be popular and a 'Bush Regeneration' workshop was held for the first time.
- Council funded the attendance of local Bushcare volunteers at an Introductory Bushcare Training Workshop in October 2006 and March 2007. This was organised in collaboration with councils from South East Sydney and run by Ryde TAFE. The course was comprised of modules of Certificate II of Natural Area Restoration.

Waverley LGA boasts 112 hectares of open space covering 82 parks and reserves. Of this approximately six hectares is native remnant vegetation. Small areas of remnant bushland are also located on private properties.





Biodiversity

- Waverley Bushcare held several information stalls throughout the year to promote the work of the highly valued Bushcare groups and to recruit additional volunteers. Events attended included the Eastern Sydney Community Information Day (September, Bondi Junction Mall), the Eastern Suburbs Children's Festival (October, Waverley Park), the Royal Easter Show (April, Olympic Park, Homebush), and Council's World Environment Day Celebrations (May, Bondi Pavilion).
- In September 2006 Council participated in an Asthma Weed Education Project in collaboration with an Asthma Weed Project Officer for the Central Sydney and Sydney North Regional Weeds Committees. This involved setting up an information stand and distributing Asthma Weed kits advising residents how to recognise and remove this noxious weed from their property.
- An additional Bushcare group was inaugurated at Eastern Reserve, Dover Heights in May 2007, making a total of six active groups in Waverley.
- Three separate corporate organisations volunteered in the Bushcare program in the reporting period. Two companies joined the existing Bushcare group at Calga Reserve on different occasions to help weed the remnant area and one group was involved in a tree planting project at Rodney Reserve, where they planted 300 native shrubs and groundcovers.
- A Noxious Weed Mapping Project for Waverley was developed in February and implementation began in March 2007. Mapping is not yet complete due to technical difficulties, although it is proposed that all areas within 500 metres of remnant vegetation be mapped. Data has been captured in residential and commercial areas, parks and reserves. Once completed, the data will be available for use on Council's electronic mapping program. Weed maps from this project will be used to assist Council's Weed Control Program and monitor weed treatments.
- The area of bushland in active care of Council and community in Waverley has increased by 133% in the reporting period, and is now a total area of 5,240m². This is a result of additional grant funds and funding from Council towards bush regeneration projects.
- Bushcare was a feature of the education program of local schools this year, with a group of students visiting Bronte Gully Bushcare Site in May 2007.
- The Draft Tamarama Park Plan of Management was adopted by Council in the last quarter of the reporting period. The plan was significantly amended following initial public exhibition and upon Council consideration in September 2006. It was re-exhibited in November 2006 to ensure the community was aware of the amendments.
- Council developed a Tree Management Plan (TMP) which was adopted in October 2006. This is available on Council's website. The Tree Management Plan provides a framework for the management of trees throughout Waverley and emphasises how trees can improve the environmental sustainability of the local area by providing shade, protection from wind and solar radiation, reducing air pollution and many associated benefits. It also aims to educate and encourage residents to plant more native trees, shrubs and groundcovers to provide the biodiversity necessary to encourage a healthy mix of wildlife in the urban garden. The TMP provides policies and procedures for planting, maintenance and removal and will result in more effective and coordinated management of all trees in the local government area.
- Council established its Sustainable Garden Awards as part of the new Civic Pride Program. The awards recognise aesthetically pleasing and sustainable gardens, focusing on water-wise and environmentally friendly gardening methods. The Waverley Council Civic Pride Awards for Gardening have been promoted and sponsorship was being arranged at the end of the reporting period. The awards will be judged in October with an award ceremony to be held in November 2007.



- Council's Adopt a Tree Program was also created under the Civic Pride Program. This initiative, launched in May 2007, encourages residents to become involved in their community and improve the amenity of their area. Pamphlets were distributed to assist residents. Brighton Boulevard and Warners Avenue have been targeted for 'whole street' programs with Brighton Boulevard already planted for the adoption program.
- A Vegetation Management Plan has been prepared for Waverley Cemetery. This was prepared mainly for the Coast Walk extension and forms part of the planning for construction. The plan includes advice on vegetation work before construction and protection guidelines during construction.
- A Vegetation Management Plan was developed focusing on three reserves between Vacluse and Dover Heights (Diamond Bay Reserve, Eastern Reserve and Rodney Reserve). This is part of a three year grant received from the Environmental Trust in 2005 to manage remnant vegetation by concentrating on bush regeneration.
- Council's Environmental Levy funded an investigation into the viability of an indigenous seed propagation bank for Waverley. A private consultant was appointed in June 2007 to undertake seed collecting. Seeds collected from local remnant areas are stored at Randwick Nursery, and propagated for Council on a needs basis. This collection and propagation project is expected to continue.
- An Eastern Water Dragon was sighted for the first time by contractors working in Rosa Gully, Diamond Bay. This is significant as it shows an increase in species diversity in the area.
- Council completed its Pesticide Use and Notification Plan in accordance with the Environmental Protection Authority's guidelines. It is now in operation across all relevant work units.
- Council continued to control noxious weeds in urban areas bi-monthly as part of the Public Works & Services spraying program. All streets and laneways accessible by quad bike were targeted by weed management consultants.
- Steam treatment has been introduced as a weed control method in Waverley. This chemical-free approach has been adopted by Parks Operations on a needs basis.
- During the reporting period, 242 trees were planted in Council's streets and reserves. The survival rate has been 96%.

Steam treatment has been introduced as a weed control method in Waverley.



Noise

Noise pollution can be defined as unwanted or offensive sounds that unreasonably intrude into our daily activities. It has many sources, most of which are associated with urban development such as roads, air, transport, industrial noise, neighbourhood and recreational noise. The impact of noise in our community can reduce public amenity, and adversely affect health and communication.

Noise pollution can cause a major reduction in the quality of life. However, some unavoidable activities, such as demolition, construction and excavation, are inherently noisy and need to be well managed rather than prevented.

The Department of Environment and Climate Change (DECC), the NSW Police Service, and local councils all play a part in monitoring and regulating noise control.

The *Protection of the Environment Operation Act 1999* and the *Protection of the Environment Operations Noise Control Regulation 2000* are the principal legislations applied throughout NSW to address environmental noise issues. Actions implemented under this legislation include: *Noise Abatement Order; Noise Abatement Direction; Noise Control Notice; Prevention Notice; Proactive Response; and Regional Response.*

Between July 2006 and June 2007, Council received approximately 490 noise complaints. Council responded by carrying out inspections and taking appropriate regulatory action.

SUSTAINABILITY TRENDS

Environmental Indicator	02/03	03/04	04/05	05/06	06/07	Movement towards sustainability
Number of noise complaints	65	154	434	500	490	↑

PRESSURES ON OUR ENVIRONMENT FROM NOISE

- Increasing population
- Barking dogs
- Traffic and transport
- House and car alarms
- Swimming pool pumps
- Mechanical ventilation systems
- Parties
- Public events
- Construction noise
- Garbage collection.

RESPONSES TO THESE PRESSURES

- Between July 2006 and June 2007, Council received approximately 490 noise complaints. Council responded by carrying out inspections and taking appropriate regulatory action. Most complaints were resolved at this stage, however non-compliance with regulatory notices led to some fines being issued.
- In the reporting period, approximately 250 of the total noise complaints were attributed to barking dogs. This is a significant reduction from the previous year. Complaints about barking dogs generally occur when dogs experience insufficient space, provocation, lack of exercise or adequate shelter, ill health, or an unsuitable diet. The majority of these complaints were resolved through mediation and negotiation. However, in the case of ongoing problems, Notices of Intent to issue Nuisance Orders, and Dog Nuisance Orders were issued under the *Companion Animals Act 1998*.



- A booklet, *My Bondi Summer*, was again used to distribute information about the Safe Summer in Bondi campaign. Together with event details, the booklet contained information on alcohol-free zones (the Sober Santa campaign), safe summer parties (controlled licensed events) and the noise complaint hotline (noise complaint coordinators working with production managers to reduce the volume of events). This booklet was widely distributed through cafes, shops, clubs, pubs, backpacker hostels, Waverley Library, Bondi Pavilion, Council Chambers, and a letterbox drop to residents. There were no reported noise complaints during the licensed events.
- Council requires a Noise Management Plan to be submitted for any proposed development with alcohol licensing approval. These plans reduce the noise impacts of such establishments on nearby residential areas.
- As a requirement of Council's Visitor Management Strategy, all boarding houses now have a Management Plan in place to mitigate potential noise impacts on nearby residents. Council's Visitor Management Strategy focuses on reducing the adverse impacts of visitors on the Waverley area.
- As part of the Noise Management Plan, Council is working closely with the Police to mitigate noise pollution throughout the Waverley area. Council receives monthly reports from the Police on noise-related complaints. The problem areas highlighted in these reports are targeted by Council and ongoing noise pollution prevented. Any residences receiving two or more noise complaints are visited by a Council officer, and sent a letter of warning.
- In August 2005, Council entered into an agreement, or Accord, with local licensees, Police, and the Department of Gaming and Racing to help prevent alcohol-related harm. Through this Accord, liquor licensees now have the opportunity to meet regularly with authorities and other stakeholders to develop holistic strategies to deal with local alcohol-related issues.

Council requires a Noise Management Plan to be submitted for any proposed development with alcohol licensing approval.

Aboriginal and non-Aboriginal Heritage

Heritage is defined as a place, object, custom or culture that has historic, scientific, cultural, social, archaeological, aesthetic, natural or Aboriginal significance. Heritage consists of those places and objects that we as a community have inherited from the past and wish to hand on to future generations.

The Waverley Heritage Study conducted in 1994 identified over 400 items of either natural, built, or Aboriginal significance with an additional seven heritage conservation areas. To ensure their conservation and protection, each of these items was scheduled within the Waverley Local Environmental Plan 1996. Waverley LGA also has eight listings in the State Heritage Inventory under the *Heritage Act 1977*.

Waverley Council is committed to the protection and conservation of our Aboriginal heritage. In partnership with the NSW National Parks and Wildlife Service, Council is responsible for the protection, preservation and management of all Aboriginal relics throughout Waverley irrespective of land tenure. Waverley LGA has nine Aboriginal Heritage sites recorded on the Aboriginal Sites Register under the *NSW National Parks and Wildlife Act 1994*. These include rock engravings, camps, caves and midden sites.

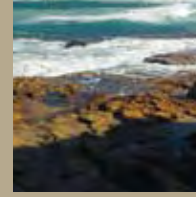
It is likely this area supports far more unknown or unlisted sites throughout the municipality.

PRESSURES ON OUR HERITAGE

- Recognised need to expand current heritage register
- Lack of enforceable maintenance provisions for listed sites
- Inappropriate infill development in heritage conservation areas
- Increased applications for on site parking provisions within listed heritage areas
- Insufficient expertise in dealing with listed items
- Unrealistic expectations of floor space ratio applied to listed buildings
- Cultural change in favour of replacement rather than maintenance of built fabric
- Lack of understanding and recognition of Native Title rights and interests
- Erosion or damage of sites from wind, water, sun and human activities
- Private construction techniques in Bondi's sandy soils are not congenial to sifting for Aboriginal artefacts
- Environmental performance and access legislation.

SUSTAINABILITY TRENDS

Environmental Indicator	02/03	03/04	04/05	05/06	06/07	Movement towards sustainability
Heritage items listed in Waverley LEP	432	432	432	432	432	↔
Number of traits listed on the NPWS Aboriginal Sites Register	209	209	209	209	209	↔



RESPONSES TO THESE PRESSURES

- The Draft Waverley Heritage Assessment (DWHHA) was placed on public re-exhibition from May to June 2007. The DWHHA aims to identify and analyse the environmental heritage of the Waverley LGA and to make practical recommendations for its conservation. An independent heritage review panel was convened as part of the assessment process and considered objections at six meetings and site inspections. Following this review and further consideration by Council Officers, the revised draft Waverley Heritage Assessment includes 182 proposed heritage items, ten proposed heritage urban conservation areas and one proposed landscape conservation area. Once the Draft Waverley Heritage Assessment is adopted by Council, the proposed heritage items and proposed heritage conservation groups and areas will be formalised by way of a Local Environmental Plan. The draft assessment is scheduled for adoption prior to October 2007.
- Council continues to offer a free heritage and urban planning advisory service to assess the impacts of proposed development works on identified heritage sites. This is available two days per week (Tuesdays and Fridays). Where the impact is identified as excessive, applicants are required to address identified issues, engaging specialist heritage planners if needed.
- Heritage information kits have been prepared and are now being included in development application kits. The kits include information regarding permissible activities on heritage sites.
- The second annual Waverley Council Heritage & Design Awards (now a part of the Civic Pride Program) were held in March 2007 at the Bondi Pavilion during the National Trust's Heritage Festival. The awards aim to inspire, recognise and promote good design solutions. They also help to ensure that the significant qualities of heritage buildings and heritage urban conservation areas are maintained and that contemporary design contributes to the existing streetscape. The winner of the Contemporary Design Category was a private residence in Queens Park that updated the architectural style and materials, contributing to the streetscape by creating a more modern presentation. Bronte Pool was the winner of Heritage Design Conservation Category. The pool had undergone stabilisation after damage from wave action, while maintaining the forms and finishes of the original structure.
- Heritage conservation is included in the Consolidated Waverley DCP (precinct-based plan containing heritage conservation controls for development on private and public land).

The Waverley Heritage Study conducted in 1994 identified over 400 items of either natural, built, or Aboriginal significance with an additional seven heritage conservation areas.





Aboriginal and non-Aboriginal Heritage

- Due to the significance of place, the Waverley area boasts 180 individual Aboriginal entries on the NPWS Aboriginal Sites register and 209 traits. These include rock engravings, middens, shelters with middens, shelters with art, open campsites, shelters with deposits, axe grinding grooves, burial sites, contact mission, and a historic place. It is also important to note that due to sea level rise around 10,000 years ago, it is estimated that hundreds of sites are located off the coast.
- Two significant archaeological sites located at Bondi summarise past Aboriginal occupation of the Waverley area prior to European settlement. These comprise a large open campsite located during the 1890s in the sand dunes at the back of Bondi Beach and the extensive rock engravings at Bondi Golf Course / Williams Park. Artefacts that were relocated from the Bondi Beach middens to the Australian Museum in the 1930s are currently being identified.

