

WAVERLEY PUBLIC ART WALKING TRAIL

BONDI JUNCTION WALKING TRAIL



1 The View Before Us, 2008
Juliet Holmes à Court
(next to Waverley Library)



2 Waverley Library Galleries



3 Mural, Sand, Dust and Dry Earth, 2004
Thylacine
(underfoot)



4 Local Branches, 2001
Camie Lyons, bronze



5 Life Teeming, Life Teeming, 2011
Terrance Plowright, stainless steel, sandstone, LED lighting



6 Park Life, 2012
Graham Charlcroft, hoop pine (Overhead)



The View Before Us, 2008
Juliet Holmes à Court

Healthy body, healthy mind: take a tour of Waverley's beautiful public art.

Our walking tours aim to highlight the diversity of Waverley's public art, offering a chance to explore the region and its iconic artworks.

Estimated time

Bondi Junction

- Speedy sightseer - 35 min
- Wander and wonder - 1 hr
- Slow and steady - 1.5 hr

Bondi Beach

- Speedy sightseer - 1 hr 20 min
- Wander and wonder - 2 hr
- Slow and steady - 3 hr

Waverley Council, private developers, community organisations, and business operators all play a role in the commissioning of public artworks.

FOR MORE INFORMATION HEAD TO
WWW.WAVERLEY.NSW.GOV.AU/ART

This guide has been produced by Waverley Council.



WAVERLEY
COUNCIL

BONDI BEACH

WALKING TRAIL



1 Migrant Memorial, 2008
McGregor Westlake Architects



2 Biddigal Reserve Mosaics, 1991
Lloyd Kelemen, mosaic



3 Peace Mural, 1986
Carol Ruff, mural



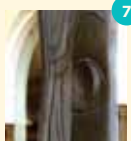
4 Mosaic Street Furniture, 1998
Lloyd Kelemen, Helen Bodycombe and Enver Camdal, mosaic glass



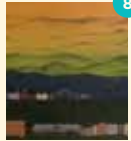
5 Pavement Rondels, 2001
Fiona MacDonald, Melanie Cariss, Kathryn Grant, stainless steel, glass, basalt, sandstone



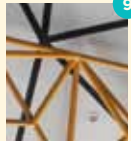
6 Human Sundials, 2008
Steven Russell and Urban Art Projects, stainless steel



7 Artist and Model, 2011
Terry Stringer, bronze



8 From the Little Things, Big Things, 2013
Etienne Cohen, Paul Davies, mural



9 Voltage, 2013
Dion Horstmans, round bar, powder coat (At the entrance to Harris Farm)



10 Bondi Waves Sculptured Railing, 1998
Chris Rak, stainless steel



11 View with a Room, 2002
Linda Bowden, mild steel



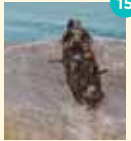
12 The Stick Man, 1998
Paul Milman, bronze



13 Life of the Beach, 2007
Sasha Reid, stainless steel



14 Chapel for Sydney, 2005
Vaclav Fiala, eucalyptus



15 A Century of Surf Lifesaving, 1998
Diana Webber, bronze



16 Bondi Sea Wall (Street Art Wall)
Various Artists



17 Surf Life Saver, 1998
Diana Webber, bronze



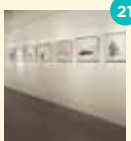
18 Dolphin, 1998
Diana Webber, bronze



19 Australian Natives, 1984
Patsy Hey and Helen Leitch, ceramic



20 Floor Mosaic, 1983
Terry Yumbulul, Lloyd Kelemen and Justin Robson, mosaic



21 Bondi Pavilion Gallery

