

Waverley in FOCUS

Community Newsletter #55

Spring 2012



We're cleaning up the streets of Bondi Junction



*Garden awards
Page 4*



*Moving towards
your vision for
the future
Page 5*



*Have a say,
Bondi Park,
Pavilion and
beachfront
Page 17*



No more trolleys on Bondi Junction streets

For too long abandoned shopping trolleys littered our streets and parks, sometimes rolling onto roads and becoming a safety hazard or being filled with rubbish. Abandoned shopping trolleys are a thing of the past in Bondi Junction following the installation of a trolley management system in Westfield and Eastgate shopping centres.



Council Contacts

Customer Service Centre	9369 8000
Resource Recovery (Waste) Hotline	9369 8080
Waverley Library	9386 7777
Bondi Pavilion	8362 3400
Bondi Junction Town Centre Office	8305 8419
Bondi & Beaches	8362 3408
Waverley SES	9698 4477
Meals on Wheels & Shopping Service	9386 7977
Waverley Cemetery	9665 4938
Mill Hill Centre	9386 7999
School of Arts	9387 2461
Bronte Child Care	9665 7998
Gardiner Child Care	9387 1252
Waverley Child Care	9386 9200
Family Day Care	9389 9421
Community & Seniors Centre	9386 7900
Bushcare	9386 7915
Environment Team	9369 8045

Coles and Woolworths, in conjunction with Waverley Council, Eastgate and Westfield shopping centres, have implemented a shopping trolley management system to prevent trolleys being taken out of the centres and then abandoned, polluting our parks and streets and becoming a potential safety hazard.

The trolley management system stops all Coles and Woolworths trolleys from leaving both shopping centres, through an underground management system, though people will be able to still wheel their trolleys to the nearby taxi rank and bus stop outside Eastgate Shopping Centre if needed.

This joint initiative is making our streets and community safer and cleaner.

■ For more information and frequently asked questions visit our website www.waverley.nsw.gov.au

Waverley in Focus is published by Waverley Council. If you have any enquiries or comments about the publication please contact us.

Email
communications@waverley.nsw.gov.au

Post
PO Box 9, Bondi Junction 1355

Download free audio and e-books from Waverley Library



To use this free service:

- 1 Go to www.waverley.nsw.gov.au/library and click on the icon.
- 2 Choose the supported portable device option on the left-hand side of the screen to make sure you're using a compatible device.
- 3 Load the required software, following the **Digital Help** and **My Help** on-screen prompts.
- 4 Now you're ready! Download from our great range of fiction, non-fiction, biography, crime, horror, romance, travel, classics and more.
- 5 Most e-books can be returned before their due-by date: in the 'library view' window select the book you want to return, click the triangular button to open the item option window and select 'return borrowed item'. If using an iPad or iPhone, select the '+' sign on the right of the screen.

Waverley
Library

Pre-Olympic fun at new centre

The Margaret Whitlam Recreation Centre played host to its first big sporting event in July in the lead-up to the London 2012 Olympics.

An estimated 300 primary school-aged children took part in the Mini Olympics, as part of the Prime Minister's Olympic Challenge, organised by Eastern Suburbs OOSH centres.

It was a day of fun, fitness and friendship as the children played a variety of games such as indoor soccer, hockey, netball, javelin, discus and running, giving the children a sense of the real Olympics, only on a mini level.

The day was also designed to give children confidence and to exemplify the importance of self worth, commitment and achievement, participation, and good sportsmanship.

Centres that participated in the day included Bondi After School Care, Galaxy Outside School Hours, Maroubra Junction Care Centre, Rose Bay OOSH, Kool Kids, SMOOSH, Weave, and Coogee Care Centre.



As we went to print, Council was preparing for the elections on 8 September so there is no information in this *Waverley in Focus* about the election outcomes. It has been a busy four years for Council and I am pleased with what we have achieved during this time. The *End of Term Report* summary and *Service Plus* update have been included in this edition to keep you up-to-date on Council projects and what we are doing to work towards your community vision for Waverley and how the community is progressing towards the vision for Waverley.

The Brightest and Best Business Awards nominations were open to all businesses in the Waverley area. This year we received an overwhelming response with just over 200 nominations. The awards celebrate and promote the great contribution local businesses make to our community, which is encouraged here at Council. Thank you to all those who sent through nominations and are proud of their business. Winners will be announced at the official awards ceremony in October. Details of the winners will be available in the Summer issue of *Waverley in Focus*.

The school holiday program is on again from 24 September to 5 October. We have over 50 great workshops and activities for families, kids and teens at Waverley Library, Bondi Pavilion and Margaret Whitlam Recreation Centre. Our programs are a fun and affordable way to keep the kids entertained over the school holiday period. For a full program visit www.waverley.nsw.gov.au/holidayprograms

Tony Reed
General Manager

Gregory Memorial Fountain Rededicated



Left to right:
Dr Walter Jarvis,
Keith Jackson and
Steve Webb

On Friday 27 July, Council held a rededication of the Gregory Memorial Fountain in Waverley Park.

The occasion marked the completed restoration of the fountain which was originally erected in 1911 in the memory of Charles W Gregory, a member of the then Waverley Cricket Club who died aged 32. At the time of his death Charles Gregory held the record for the highest score in Australian first-class cricket, and the second highest in the world.

In 1966 three other names were added to the fountain, those being Victor Jackson, James Webb and Peter Fingleton, who tragically lost their lives in a car accident in

western NSW while playing social cricket. Family members from the three families, including James Webb's son, Stephen, who arrived from America, joined Council in unveiling this historic monument.

The Gregory Memorial Fountain was severely vandalised, having been broken into pieces. Council undertook to restore the monument when planning for the construction and landscaping of the Margaret Whitlam Recreation Centre. To reassemble the fountain to its original condition Council used rare photos from when the memorial was first dedicated in 1911. The fountain now rests in Waverley Park on the Bondi Road end.

Council thanks local businesses for their support



GUEST JUDGE AND HOST
Costa Georgiadis
ABC TV's
Gardening Australia

This year Council has been very impressed by the nominations and the support in getting the 2012 Garden Awards up and running.

Council would like to give a big thanks to the local businesses that got behind the Awards and provided over \$4,000 in prizes: Dragonfly Floral Design, Belle Properties Bondi Junction, Bondi Road Fruitologist, Sydney Organic Gardens and Honeysuckle Garden Centre.

This year Council has introduced a special category called Green Kids, awarding kids and youth who are gardening in Waverley.

Nominations are closed, but to see who won what and to give you inspiration to enter the garden awards next time, check out the *Wentworth Courier* on Wednesday 10 October for the list of winners. All nominees will attend a garden tea, hosted by Costa from ABC-TV's *Gardening Australia*, at the beautiful grounds of Bronte House on Sunday 14 October.



■ To find out more about this year's garden awards visit www.waverley.nsw.gov.au/gardenawards

Media sponsor Sponsors

Who is your local hero?



Do you know someone who has made an outstanding contribution to the Waverley community? Nominate them for the Waverley Local Hero of the Year awards.

Nominees can be leaders in any field and will be honored at the Waverley Australia Day Ceremony in 2013.

Entrants can nominate in two categories:

Waverley Local Hero of the Year

Waverley Young Local Hero of the Year

(25 years of age or younger on 26 January 2013)

All nominees must be Waverley residents and/or have served the local community.

■ For more information and nomination forms call the Civic Pride Coordinator on 9386 7925 or visit www.waverley.nsw.gov.au/community/civic_pride



Recipients of the 2012 Waverley Local Hero of the Year Awards with Mayor John Wakefield and Australia Day Ambassador Karen Banton



Waverley Together 2

Our community's strategic plan for 2010–22

*Moving towards
your vision for
the future...*

SPECIAL 12-PAGE SUPPLEMENT



Progress towards your vision

In 2010 after extensive consultation, Waverley Council adopted on behalf of the Waverley community a long term strategic plan to help the community achieve the quality of life they want by 2022. That plan is called *WaverleyTogether 2*.

The vision for Waverley adopted in the plan is:

- We are safe
- We are reconciled with and value our indigenous past
- Connections within families and between generations can remain unbroken
- Everyone is welcome to participate positively in community life
- We are inspired and able to renew our physical and spiritual wellbeing
- We can express our essential selves through our traditions, our arts, our cultures, and our lifestyles
- We act together as a compassionate society
- The beauty of our beaches, cliffs and coastal lands endures
- The architectural landscape is cared for and developed at a human scale and design is sensitive to the natural, historical and social contexts
- Vital services are fully accessible
- Scarce resources are conserved and fairly shared
- Local economic prosperity provides opportunity for all
- As a local community we have the courage to take a leading place in achieving the environmental aims of a global society
- We are confident our leaders will reflect thoughtfully on our views and best interests when making decisions for our future.

This report summarises our progress as a community in achieving this vision together. It:

- Displays the progress made by the Waverley community towards achieving their vision for a great quality of life during the term of office of the 2008–12 elected council
- Takes measures of the performance and effectiveness of the strategies of *Waverley Together 2*
- Sets out some advice for improving and changing strategies to maximise the community's chances of achieving their desired future.

Waverley Council is not the only player in delivering your future. Other levels of government, local businesses and the community itself play a vital role. But we are a key agency in helping you make your vision a reality.

This report addresses three key questions:

- 1 Did life in Waverley get better during this term of Council?
- 2 Are we moving towards or away from having:
 - A sustainable community
 - A sustainable lifestyle and economy
 - A sustainable environment
 - Sustainable governance?
- 3 Did our programs and partnerships help our community make positive progress towards achieving their vision and targets?

Council has collected data and independently commissioned a statistically valid survey to check progress towards the vision. The results have been collated and analysed in an 'end of term report' of the outgoing council elected in 2008. A copy of the full report is available on Council's website at www.waverley.nsw.gov.au



1 Did life in Waverley get better during this term of Council? *Yes*

WAVERLEY TOGETHER 2 VISION – PERCEIVED AND ACTUAL PROGRESS		
Vision	PERCEPTION OF PROGRESS TOWARDS VISION	PROGRESS TAKING INTO ACCOUNT PERCEPTION AND PHYSICAL MEASURES
We are safe	→	→
We are reconciled with and value our indigenous past	→	→
Connections within families and between generations can remain unbroken	→	→
Everyone is welcome to participate positively in community life	→	→
We are inspired and able to renew our physical and spiritual wellbeing	→	→
We can express our essential selves through our traditions, our arts, our cultures, and our lifestyles	→	→
We act together as a compassionate society	→	→
The beauty of our beaches, cliffs and coastal lands endures	→	→
The architectural landscape is cared for and developed at a human scale and design is sensitive to the natural, historical and social contexts	←	←
Vital services are fully accessible	→	→
Scarce resources are conserved and fairly shared	→	←→
Local economic prosperity provides opportunity for all	←	←→
As a local community we have the courage to take a leading place in achieving the environmental aims of a global society	→	←→
We are confident our leaders will reflect thoughtfully on our views and best interests when making decisions for our future	←	←→
→ Movement towards sustainability ← Movement away from sustainability ←→ Some elements achieved movement towards sustainability with some elements moving away from sustainability		

Overall, your perception is that over the last three years quality of life in Waverley has improved in all but three aspects of our preferred vision. However, in some aspects, physical and economic data suggest a slightly different picture of the direction of progress.

2 Are we moving towards having:

- A sustainable community *Yes*
- A sustainable lifestyle (including a sustainable economy) *Yes*
- A sustainable environment. On balance *Yes* but some areas showed movement away from sustainability
- Sustainable governance *Yes*

Waverley Together 2 has four 'quadrants' of strategies to help achieve sustainability and ultimately our community vision.

Some significant findings for each quadrant are summarised below:



Sustainable Community

Cultural diversity, our **sense of belonging** and **access to community support services** have **improved** and there are **more** units of **social and affordable housing**.

Safety is seen to have generally **improved** and Waverley is a **more involved and creative community**.

Health and **quality of life** have **improved** and the **majority** of respondents **agree** that there is a **sense of community in Waverley**.

12% more residents agree there is a sense of community in Waverley in the last 3 years

100% of targets in this quadrant are at or moving towards sustainability

44% increase in satisfaction with childcare services but still some way to go to meet growing demands

19% increase in satisfaction with community facilities

There is a need to improve access to services for people with disabilities

Sustainable Living

Waverley is a **better** place to **live** and do **business** than in 2009. The **local economy** is **doing well**. **Employment** is **high**.

The place **looks better** and has a **stronger sense of identity**.

Pedestrians feel safe but **cyclists feel unsafe**. Satisfaction with **public transport** has **improved** but **traffic** and **parking** satisfaction remain **low**.

Overall the movement has been **towards sustainability**.

Over 95% of commercial premises are occupied

Unemployment remains low at 3%, almost half the national average

40% increase in residents who are happy with graffiti control

4-wheel drive vehicle registration increased by 50%

Motorcycles and scooters registered in Waverley increased by 24%

There were 2% more vehicle and pedestrian accidents



Sustainable Environment

14% less of total travel by residents is by public transport, walking or cycling, however scooter and motorcycle use has increased

53% increase in Council's mains water consumption but the community's remained stable

19% increase in satisfaction with Council's environmental management and education

36% increase in the community's use of solar power generation (KW)

14% more residents rate the water quality in beaches and waterways as clean

Carbon emissions from Council's operations **reduced** while those from the community **increased**. **Private car use declined slightly** but so did **travel by public transport, walking and cycling**.

Waste generation increased and **less** was **diverted from landfill**. **Community water use** remained stable but **Council's increased**.

The **beaches** are in **good condition** and **more** residents rate the **water** as **clean**.

Satisfaction with **environmental management** and **education** **improved** but **fewer** residents rate the **environment** as an **important issue**.

Sustainable Governance

11% more satisfaction with Council assets

16% increase in satisfaction with Council's customer service

15% increase in residents who believe Council acts in an open and honest way

11% increase in residents who believe they can have a say in what Council does

17% more people feel informed about Council activities

57% agree Council's planning and leadership are contributing to a sustainable environment in Waverley

Satisfaction with **asset maintenance** **increased**, as did **customer service** and **information** about Council activities.

More people believe they can **have a say** and that Council acts **openly and honestly**. Council was declared **financially sound**.

The **majority of residents** believe that Council provides **good value for money**.

Confidence in community leadership and governance was perceived to have **declined** but **confidence in Council** as an environmental manager, planner and leader in community engagement **has grown**.



Council's contribution - Service Plus

3 Did our programs and partnerships help our community to make positive progress towards achieving their vision and targets? On balance, *Yes*

Surveys completed in 2009, 2010 and 2012 have consistently confirmed that the Waverley community considers Council's services to be central to achieving the vision and targets of *Waverley Together 2*.

To ensure Council can make the maximum contribution to the community's chances of achieving their vision, Council has developed *Service Plus*.

What is *Service Plus*?

Service Plus is a \$1.5 billion service program over 11 years to help the community achieve its vision. It maintains all Council's existing services and enhances some of them.

However, in consulting the community about what should be in *Service Plus*, a shortfall in funds of \$186 million was detected. So in 2010/11 Council asked the community about three options to address this shortfall:

Option 1	Reducing services
Option 2	Maintaining services
Option 3	Enhancing services

In response, the majority of our community:

- Strongly rejected service cuts
- Expressed dissatisfaction with current levels of service
- Called for enhancements of current services in specified areas.

A significant majority of respondents also supported a rate rise to fund services necessary to help deliver the vision.

Accordingly, Council put a business case to the Independent Pricing and Regulatory Tribunal (IPART) for a rate increase to fund the full *Service Plus* package. An application was made to IPART requesting an accumulative rate increase of 11.2 per cent over seven years which was to be applied in increments as set out in the table below:

2011/12	2012/13	2013/14	2014/15	2015/16	2016/17	2017/18
14.50%	13.50%	12.50%	11.50%	10.50%	8.67%	2.22%

IPART approved the proposed rate increases for the 2011/12 (14.5%), 2012/13 (13.5%) and 2013/14 years (12.5%) with an option to go back to the community seeking the remaining increases. IPART's approval requires the Council to regularly report to the community on the implementation of *Service Plus*.



Focus areas for *Service Plus*

Service Plus came into effect as of 1 July 2011 when the first rate increase of 14.5% was applied. This provided Council with an additional \$3,964,475 for that year which it has used to maintain existing services and to commence service enhancement projects. *Service Plus* is an 11-year program of comprehensive services including 66 service enhancements. Over half of the enhancement projects will have started within the first two years of the 11 year program.

Service Plus is not like other special rate variation funded programs. Other councils tend to use rate variations either for infrastructure 'catch up' works such as the repair of roads, footpaths etc, or the provision of 'new' infrastructure such as the construction of new community facilities, youth centres, libraries, recreation centres etc.

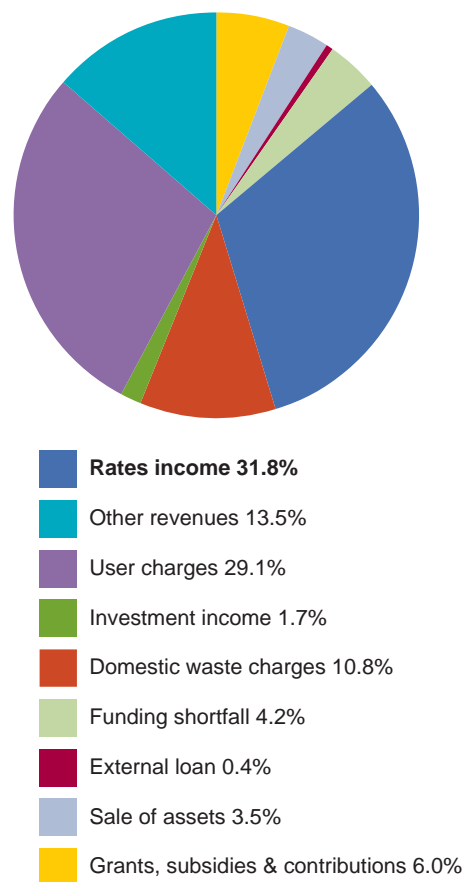
Service Plus is all these things but provides more. It is a comprehensive service package and partnership program with other players. It is Council's part of a holistic approach to the delivery of your vision.

Service Plus is funded not just by rates, but by diversified income that is being sourced through multiple strategies set out in detail in Council's *Long Term Financial Plan*. Despite the approved rate rise, rates will fund less than 32% of *Service Plus* over the coming decade. Nevertheless, Council has already put the extra rates to good work as shown overleaf and we thank the community for their support and commitment of funds.

We need to work in partnership with other levels of government, the local business sector and the community itself if you are able to secure your vision of the future.

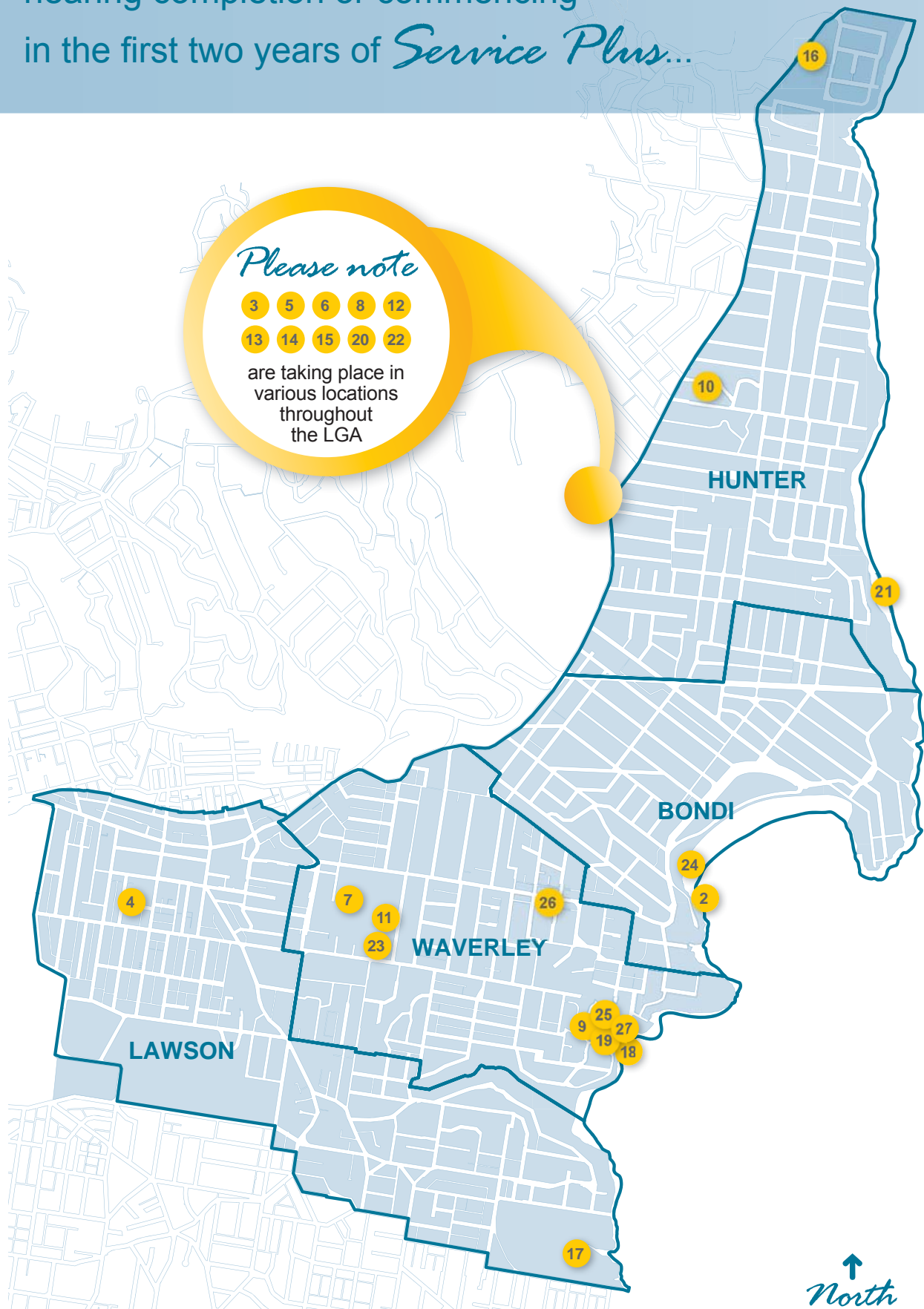
Service Plus – a \$1.5 billion program of services and partnerships over 11 years to 2022

FUNDING SOURCES FOR *SERVICE PLUS*



For more detail on the full program of enhancements under *Service Plus*, see our End of Term Report on *Waverley Together 2* at: www.waverley.nsw.gov.au

Some of the major projects underway,
nearing completion or commencing
in the first two years of *Service Plus...*





SERVICE PLUS – the rate rise of \$3,964,475 in 2011/12 has been combined with other funds to secure completion of...

- 1 A new works depot outside Waverley (not marked on map)
- 2 Bondi Park South Public Toilet
- 3 Increased graffiti removal in various places throughout the LGA
- 4 A new Child Care Centre
- 5 Road and kerb programs in various places throughout the LGA
- 6 Footpath renewals and upgrades in various places throughout the LGA
- 7 The new Margaret Whitlam Recreation Centre in Waverley Park
- 8 Stormwater drains construction and flood retention in various locations
- 9 Acquisition of lands for open space in Tamarama Gully
- 10 Rose Bay village streetscape upgrade
- 11 A Plan of Management for Waverley Park
- 12 Projects to reduce energy use and greenhouse gas in Council buildings
- 13 Projects to reduce water use at Council sites
- 14 Feasibility assessment into development of light rail transport
- 15 Extra gardening staff for landscape care in various locations
- 16 South Head Cemetery fencing and landscaping restoration works
- 17 Waverley Cemetery infrastructure renewal commencement
- 18 Playground upgrades
- 19 Biodiversity restoration projects in Tamarama Gully
- 20 Extra Rangers and compliance staff
- 21 Extension of the Greenlinks network of walking paths
- 22 Street furniture and bus shelter upgrades
- 23 Waverley Park netball, tennis and amenities areas
- 24 Bondi Beach stormwater harvesting and reuse
- 25 Tamarama Park Lifeguard and Kiosk Facilities
- 26 Bondi Road footpath upgrades
- 27 Tamarama Park Plan of Management works



Where to from here?

The results of the End of Term Report of the 2008 – 2012 elected Council show that we are moving clearly towards the vision for *Waverley Together 2* and towards quadruple bottom line sustainability. The report has identified potential new focus areas for policy, strategy and partnership development as Council moves with the community towards the development of *Waverley Together 3*.

Some significant strategies to focus on are suggested below:

VISION ELEMENT	POTENTIAL FOCUS AREAS FOR POLICY, STRATEGY AND PARTNERSHIP DEVELOPMENT
We are safe	Focus on making cycling safer Close the gap on footpath condition ratings
We are reconciled with and value our indigenous past	Maintain and develop multicultural celebration and inclusion programs
Connections between families and between generations can remain unbroken	Maintain and expand affordable housing programs as developer contributions accrue via voluntary planning agreements
We are inspired and able to renew our physical and spiritual wellbeing	Continue and develop outreach and social inclusion programs and services, particularly targeted to families in crisis, housebound individuals and the disabled
Everyone is welcome to participate positively in community life	Improve the actual knowledge of the services already available for disabled and aged people
We can express our essential selves through our traditions, our arts, our cultures and our lifestyles	Further develop existing and create new multi-function facilities incorporating opportunities for creative, cultural and self expression
We act together as a compassionate society	Encourage residents and partners to become signatories to the Charter for Compassion (Australia Inc.) already adopted by Waverley Council and the Federal Government
The beauty of our beaches, cliffs and coastal lands endures	Continue to increase investment in cleaning and greening Increase investment in education about and efficient collection of dumped rubbish Expand civic pride programs and community engagement in street and neighbourhood design and space planning, sharing and maintenance
The architectural landscape is cared for and developed at a human scale and design is sensitive to the natural, historical and social contexts	Increase focus on good urban design and preservation of heritage to protect amenity amid increasing urban density Focus on incentives to reduce traffic congestion, problems arising from lack of private parking and refine systems for residential parking
Vital services are fully accessible	Minimise misuse of parking disability scheme Consolidate and expand child care services and diversify for efficiency (eg. expand family day care services)
Scarce resources are conserved and fairly shared	Pursue alternative transport options such as car share and other incentives to utilise sustainable transport and active travel options Reverse trend of increasing private vehicle registrations, especially four wheel drives, and reverse decline in public transport use by implementing Council's recently revised Transport Plan and maintaining other sustainable policies Significantly improve the rate of recovery for recyclables, green waste and food waste from the domestic and commercial waste streams
Local economic prosperity provides opportunity for all	Proactively drive implementation of the newly adopted Local Environmental Plan (LEP) to ensure appropriately paced take-up of the released development and employment potential in commercial areas Develop Council's next property investment strategy to maximise shared benefits of and returns on Council investments
As a local community we have the courage to take a leading place in achieving the environmental aims of a global society	Show leadership on long range planning for environmental sustainability in use of environmental modelling to isolate the best investments in win-win projects for the environment Actively partner with local business in such things as urban environmental investment on cogeneration and local energy distribution schemes Continue to invest in water harvesting
We are confident our leaders will reflect thoughtfully on our views and best interests when making decisions for the future	Progressively integrate our plans with those of other levels of government Promote <i>Waverley Together 3</i> and its engagement opportunities to build confidence in all levels of government as good planners, service providers and custodians of assets

Your vision - our focus



Waverley Council currently provides 22 services in *Service Plus* which breakdown into 150 sub-services.

We want to make sure we focus on the services you need most. In *Waverley Together 2*, we identified the top 12 focus areas to concentrate on over the period 2010–2022. We're confident this focus will help the Waverley community achieve their long term vision. We will fine tune these focus areas through community engagement for *Waverley Together 3*.

Waverley Together 2

The Top 12 Focus Areas for Council services and activities





The next phase

In the next few months to May 2013 Council will be engaging the community on the priorities for *Waverley Together 3*. We will be asking about where you think Council and other players should focus and how we should fine-tune our strategies to achieve your vision.

Council still has a financial shortfall of approximately \$60 million for its contribution to the vision for Waverley. We are in the process of developing a new diversified strategy for maintaining ongoing financial sustainability. A new Long Term Financial Plan will be ready by March 2013.

As a result of the shortfall we have moved the start date back on some aspects of *Service Plus* and will work to identify funding sources for those delayed projects in the new financial plan.

However, we are off to a good start with *Service Plus*.

- In the first year of *Service Plus*, progress has been made on 87 per cent of activities in the top 12 focus areas.
- In the first two years of the 11-year program of *Service Plus* we have been able to start 59 per cent of service enhancements.

Watch our website for details of consultation for *Waverley Together 3*.



Waverley Council is updating the Plan of Management for Bondi Park and Pavilion.

The purpose of the plan is to guide how we manage and protect the park, pavilion and beachfront over the next ten years.

The plan will be written in partnership with the community through a broad range of consultation activities.

Bondi Park, Pavilion and beachfront are rich and dynamic places cherished and used by the community in many ways. The iconic status of Bondi and the large numbers of local users and visitors places a high demand on the infrastructure and resources of the park.

We want your feedback and suggestions on how we care for these beautiful sites now and for future generations and will be running a range of consultation opportunities from September – February 2013.

■ For information about specific consultation events, keep an eye on Council's website.



Scrubbing up!



Waverley Council's Public Works & Services Department have recently purchased a 'ride-on' scrubber to clean our public footways in commercial centres.

The new machine is battery powered and uses as little as one litre of water per 60m² cleaned. The machine can capture and reuse 100 per cent of this water, leaving the area clean and dry for the safety of pedestrian traffic.

The purchase eliminates the need to hire specialised contractors and utilises Council's current day labour resources.

Win tix & dinner

Tamarama Rock Surfers – Waverley's only professional theatre company – are offering Waverley in Focus readers a chance to win a great night out in Bondi.

On offer are two tickets to *I Want to Sleep With Tom Stoppard* by Toby Schmitz, directed by TRS Artistic Director Leland Kean, and dinner for two at beachfront Bondi institution Bucketlist.

To enter email **michael@rocksurfers.org** with *Waverley in Focus* in the subject line. The winner will be notified via email.

TAMARAMA ROCK SURFERS Tamarama Rock Surfers is proud to present live theatre, music, comedy, storytelling and more six nights a week right in your backyard.

ARE YOU LOCAL?

Use promo code **LOCAL2026** when booking at rocksurfers.org for \$20 tickets (a 40% saving. ID required. TRS Bondi Pavilion Theatre events only.)

■ For more information visit www.rocksurfers.org or call 9365 0147

Developing in Waverley?

- Find out about developing in Waverley
- Get a status update on your Development Applications

Go online today and view your Development Applications:

www.waverley.nsw.gov.au/da



Road safety around schools

School zone road safety is most commonly associated with tackling the dangers of speeding vehicles in 40km/h zones. The connection between pedestrian safety and the hazards created by illegal parking is often overlooked. The link may be less apparent, but it is a real and observable danger in every operating school zone.

Did you know that there are 18 schools in the Waverley LGA? That equates to an average of two schools per km². Congestion during busy drop-off and pick-up times helps to reduce the risks posed by speeding vehicles, but when people park dangerously – no matter how briefly – it is very difficult for children to interact safely with traffic.

Time limited parking is enforced outside schools in peak times for safety reasons. Children's physical and developmental limitations make them particularly vulnerable road users. Parking restrictions are designed to help all road users maintain critical lines of vision. Vehicles parked contrary to these signs create a serious hazard by making it difficult for pedestrians and approaching motorists to see each other. Time restrictions such as the two minutes allowed by 'No Parking' signs are also fair and efficient because they allow a quick turnover of vehicles where parking spaces are limited.

School zone parking legislation is in force from 8–9.30am and 2.30–4pm on all gazetted school days. School term dates are determined by the NSW Government and include all staff development and student-free days. If your child attends an independent school, which follows different term dates, it is important to remember that school zone regulations may still be in force when your child's school is closed.

2012 TERM DATES TO NOTE

Term 3 Monday 16 July – Friday 21 September (inclusive)

Term 4 Monday 8 October – Friday 21 December (inclusive)

Heavy fines and loss of demerit points apply when certain parking offences are committed in an operating school zone. This reflects the increased danger to children from illegally parked vehicles.

OFFENCES INCLUDE:

Disobey no stopping sign	\$298 + two demerit points
Stop in bus zone	\$298 + two demerit points
Double park	\$298 + two demerit points
Stop on/near children's crossing	\$397 + two demerit points

Choose to be a road safety advocate by practising safe and considerate behavior. Your children will learn from the choices you make.

■ For more information on Waverley Council's school zone road safety program, call **8305 8460** or visit www.waverley.nsw.gov.au/transport_and_parking/parking_services

over 50 fabulous holiday activities for all ages with 1-3 hr workshops to enjoy.

Spring HOLIDAY PROGRAM

24 Sept to 5 Oct 2012

Bondi Pavilion

Make music, act, dance or create a sculpture or cartoon!

Waverley Library

Treasure hunt through Europe, grow your own garden or become a scientist!

Margaret Whitlam Recreation Centre

Come and play Soccer, Netball, Basketball, Cricket, T-Ball and OZTAG!

Bookings

Bookings open 9.30am on Thursday 13 September through MCA Ticketing phone **1300 306 776** or www.mca-tix.com.au

www.waverley.nsw.gov.au/holidayprograms

Green Links now one step closer

Established to promote walking as a healthy, safe and enjoyable way to get around Waverley, the Green Links network is a series of pedestrian-friendly walks along quieter routes and back lanes that link parks, beaches, schools, shops and transport.

We are pleased to announce the completion of Green Links 3 and 4, providing links between Bronte Beach and Queens Park and Tamarama Park and Bondi Junction through Waverley Park.

The walks are easy to follow with signage and footpath stencils.

Keep an eye out for the new footpath on Arden Street, the landscaping at the corner of Waverley Street and Botany Street and a number of footpath repairs and upgrades that enhance the pedestrian environment for residents and visitors to our beautiful area.



■ For more information or a map of the Green Link routes visit www.waverley.nsw.gov.au/transport_and_parking/transport/the_green_links_project.

BONDI PAVILION THE CENTRE OF BONDI CULTURE

Festival of the Winds

Sunday 9 Sept, 11am-4pm



- KITE DISPLAYS
- KITE-MAKING WORKSHOPS
- KIDS' RIDES & PLAYGROUND
- KITE STALLS & FOOD STALLS
- DANCE WORKSHOPS
- ART EXHIBITION
- MULTICULTURAL MUSIC & DANCE
- CRAFT WORKSHOPS & MORE!

HEBREW HERITAGE MUSIC

Tapping into the richness of local Jewish culture
Create innovative beats and sounds with some of Sydney's finest Jewish musicians including members of The Astmatix. For more info on this new 8-week course for years 7-12, call the Music Coordinator on 8362 3404.

THEATRE

Upcoming Productions in the Bondi Pavilion Theatre
'I Want to Sleep with Tom Stoppard' 29 Aug-22 Sept
'The Interview' by Theo Van Gogh 31 Oct-23 November
'Psycho Beach Party' by Charles Busch 28 Nov-16 Dec.
For information and bookings visit www.rocksurfers.org.au



SENIORS CONCERTS

19 September, 17 October, 21 November
1.30pm High Tide Room
Music and dance entertainment with light refreshments.
Please book through the Pavilion office on 8362 3400.

OCEAN CARE

Celebrating our oceans
Sunday 25 Nov, 11am-4pm

ENTERTAINMENT • CHILDRENS' ACTIVITIES
ENVIRO STALLS • MARINE ACTIVITIES •
MARINE DISCOVERY CENTRE AND MORE!



primary school ROCK STARS!

JOIN A BAND * WRITE YOUR OWN SONGS * MAKE A CD
Open to students in Years 5 & 6.
Auditions in early September to commence in Term 4.

For more information on any of these activities call the Bondi Pavilion on 8362 3400 or visit www.waverley.nsw.gov.au



Love Food, Hate Waste

The Reduce Your Footprint program, a collaboration between Waverley, Woollahra and Randwick councils, is all about working together to help our communities reduce the community-wide ecological footprint of residents living in Sydney's eastern suburbs.

Recently Reduce Your Footprint was successful in being awarded a \$14,500 grant from the Office of Environment and Heritage to conduct the Love Food, Hate Waste program across the three council areas. The Nature Conservation Council of NSW will run 'The Food Waste Challenge' as part of this program.

Research has shown that more than 800,000 tonnes of food is thrown away by NSW householders each year, meaning the average NSW household throws away \$1036 a year of food. Food waste not only has an economic impact, but also an environmental impact. Wasting

food wastes water, energy, natural resources and contributes to the generation of methane in landfill – a potent greenhouse gas.

The Food Waste Challenge will educate households on how to reduce the amount of edible food wasted every day through a series of practical workshops on the important topics of buying food, cooking food and storing food.

Ultimately we are looking to help households reduce the amount of food they waste, saving households money, while also helping the environment.

■ For more information or to register visit www.reduceyourfootprint.com.au/projects/the-food-waste-challenge/

Or contact the Environmental Education Officer on 9369 8045 or environment@waverley.nsw.gov.au



Major strides to cut energy use and carbon footprint

In continued efforts towards achieving cost and environmental efficiencies across the organisation, Waverley Council has commissioned Ecosave Pty Ltd to implement a suite of energy efficiency projects at eleven of our largest energy-using sites.

These projects include energy efficient lighting, lighting sensors and timers, hot water boiler timers, appliance timers as well as improvements in heating, ventilation and air conditioning efficiencies. Sites include Bondi Pavilion, our Customer Service Centre, Waverley Library, Bondi Park, Mill Hill Centre, Council Chambers, Eastgate and Hollywood car parks, as well as Biddigal Reserve and Oxford Street Mall.

All projects are expected to be completed by the end of 2012.

■ For more information contact Council's Senior Environment Officer on 9369 8023.

For home energy saving tips www.savepower.nsw.gov.au

Collectively, these retrofits will:

- cut annual electricity use by over 1000 MWh electricity
- reduce greenhouse gas emissions by 1000 tonnes each year
- save over \$175,000 on annual electricity bills

With an expected 14 per cent reduction in Council's carbon footprint, this initiative is a major step towards achieving our 30 per cent greenhouse gas emissions reduction target by 2020.

Sustainability workshops

Have your say

The Environmental Services division in Waverley Council runs free sustainability workshops/programs and events throughout the year for residents.

The aim is to educate people on being more environmentally aware/sustainable by providing the skills and knowledge required to make the simple changes.

Help us to improve our services and programs for you by completing a short online survey. Even if you have never attended a workshop before or are a regular, we would like to hear your thoughts.

■ Please visit www.surveymonkey.com/sl/WaverleyCouncil_Sustainability_Workshop_Programs_Review by Friday 5 October 2012.

Every year Council runs a range of programs to help the community become more environmentally sustainable.

For monthly email updates, call 9369 8045 or email environment@waverley.nsw.gov.au

EVENTS & WORKSHOPS

BIKE MAINTENANCE

Wednesdays 19 Sep, 24 Oct & 28 Nov, 6.30–8.30pm
Mill Hill Centre, Bondi Junction

SURVIVING THE COAST: PLANTS & PROCESSES

Sat 20 Oct 10am–12 noon
Eastern Reserve, end of Lancaster Road, Dover Heights

WATER SMART @ HOME

Sat 27 Oct 10am–12 noon
Waverley Library, Bondi Junction

FOOD WASTE CHALLENGE

Part 1: Sat 3 Nov 9.30am–1pm
Part 2: Sat 17 Nov 9.30am–1pm
Centennial Parklands Education Centre, Centennial Park

ENERGY SMART @ HOME

Thur 15 Nov 6.30–8.30pm
Sat 1 Dec 10am–12 noon
Waverley Library, Bondi Junction

KITCHEN AND BALCONY GARDENING

Sat 10 Nov 10am–12noon
Waverley Community Garden, Bondi Junction

COMPOST & WORMFARMING

Sat 18 Nov 10am–12 noon
Waverley Community Garden, Bondi Junction

SUPERB FAIRY WRENS AND FRIENDS

Sat 24 Nov 10am–12 noon
Tamarama Gully

Dates for your diary

NSW BIKE WEEK
15 September
www.bicycleinfo.nsw.gov.au/events/nsw_bikeweek.html

WORLD HABITAT DAY
1 October

NATIONAL WATER WEEK
21 October
www.awa.asn.au/nationalwaterweek

NATIONAL RECYCLING WEEK
12 November
www.recyclingweek.planetark.org

Workshops free, bookings essential – call 9396 8045 or email environment@waverley.nsw.gov.au

Want some spring in your garden?



Boost your garden bloom with compost or worm juice!

Whether you grow fruit in your back yard, or flowers on your balcony, feed the soil that feeds your plants, and watch your garden thank you with a beautiful spring growth.



Get free compost bins and wormfarms from Council's 'Compost Revolution' Program.

■ Go to www.compostrevolution.com.au, do the tutorial and take the quiz.

Waverley residents even get free delivery.

Come and enjoy Council's free workshop or online tutorial to brush up your compost and wormfarming skills.

■ Book in now at www.cityeastcc.com.au or call City East Community College on 9387 7400.

Be part of the **Compost Revolution**

Bioretention for Bondi Junction

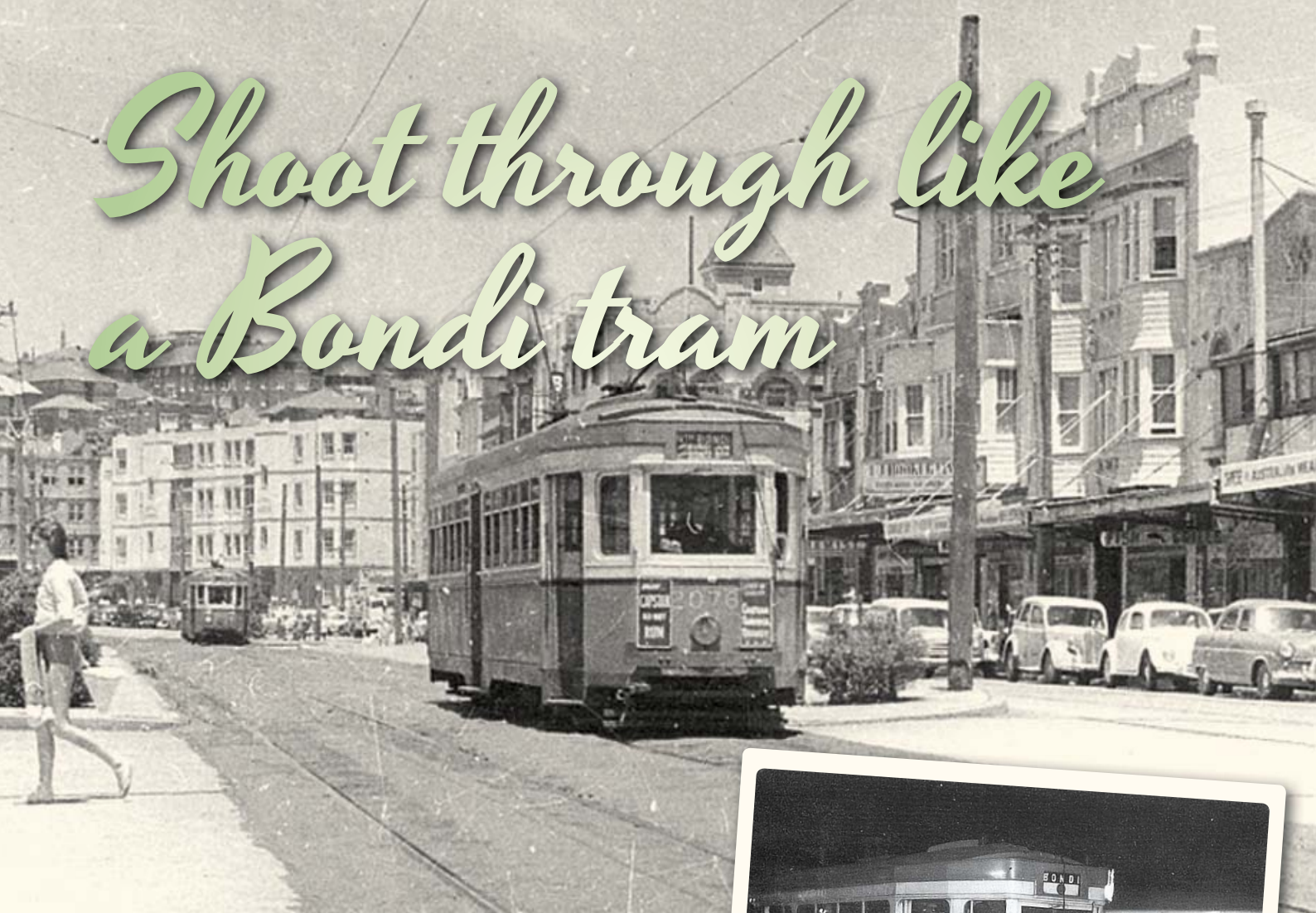
As part of the Botany Bay & Catchment Water Quality Improvement Plan, Council has received grant funding from the Sydney Metropolitan Catchment Management Authority to construct a bioretention garden in Bondi Junction commercial precinct, which drains into Centennial Parklands.

Bioretention gardens combine various Water Sensitive Urban Design treatment types into one system, working to remove pollutants from stormwater before entering our beaches and waterways.

■ For more information contact Corey Fox on 9369 8086 or coreyf@waverley.nsw.gov.au



Shoot through like a Bondi tram



It is a rare Sydney suburb whose name becomes part of our national slang, but Bondi and the long-lost (but never forgotten) trams have done just that.

The Bondi Beach tram gave the Australian vocabulary the wonderful saying 'shot through like a Bondi tram' or 'to shoot through like a Bondi tram' – meaning something that was very fast, or rushed past with a great deal of speed. This saying lingered long after the last Bondi tram 'shot through' in 1960.

The saying was first recorded in 1945; it came from the express tram service which ran from the Sydney CBD to Bondi Beach.

This tram, like express bus services today, had limited stops and as it was not continually stopping to pick up passengers it gradually got faster and faster. By the time it was near the beach it was really moving along, especially in the last part of its descent down Bondi Road to the ocean.

Some accounts claim a through tram to Bondi Beach took only 30–40 minutes from the time it left Bridge Street in the city to its arrival at the beach.

The first tram to Bondi Beach was a steam tram which arrived on 19 February 1894 with electric trams taking over in 1902. Taking the tram to and from the beach became part of the whole beach experience with contemporary photographs showing packed trams filled with beachgoers eagerly jumping off as the tram came to the end of its route in the southern end of Bondi Park.

In the early hours of Sunday 28 February, 1960 the last tram left Bondi Beach at 3.30am. The early morning hour didn't dampen the numbers.



An R-class corridor tram, it was crammed with riders and by all accounts the boisterous journey was full of merry-making, giving the iconic beach tram a suitable send off. The tram was covered in signs chalked by the revellers 'For sale – cheap', 'Last day of operation – Bondi Bronte Quay' and 'the last Bondi tram RIP 1960'.

When the tram arrived at the Dowling Street depot it was minus most of its light globes, some of its handrails, all upholstered seat cushions, the lifting jack, a headlight glass and all destination rolls.

■ For more information on our fascinating local history see the Local Studies website on Council's website, www.waverley.nsw.gov.au, or email Kimberly O'Sullivan, Local Studies Librarian, kimberlyo@waverley.nsw.gov.au.

ENGLISH

Waverley Council in conjunction with Coles, Woolworths as well as Eastgate and Westfield shopping centres have implemented a trolley management system in Bondi Junction. Coles and Woolworths trolleys will no longer be able to leave either centre, the wheels will lock at all street exits. The trolley management system is a community safety initiative to reduce the number of abandoned trolleys on our streets and in our parks. For more information visit www.waverley.nsw.gov.au

The End of Term Report is a document that reports on the achievements of Council of the four year term based on the community vision for Waverley. The full report is available at www.waverley.nsw.gov.au

Thank you to our local residents that nominated their gardens for the 2012 Garden Awards. Council would also like give a big thanks to the local business that got behind the – Dragonfly Floral Design, Belle Properties Bondi Junction, Bondi Road Fruitologist, Sydney Organic Gardens and Honeysuckle Garden Centre.

Are you interested in what's happening in your area and want to have your say? Why not get involved with your local precinct committee? To find your precinct and meeting times, call **9386 7924**.

Call Waverley Council on **9369 8000**, visit www.waverley.nsw.gov.au or ring TIS on **131 450** to connect you with us.

SPANISH

La Municipalidad de Waverley, junto con Coles Woolworths y los centros comerciales Eastgate y Westfield, ha implementado un sistema de administración de carritos en Bondi Junction. Los carritos de Coles y Woolworths ya no podrán retirarse de ninguno de los centros, ya que las ruedas se bloquearán en todas las salidas a las calles. El sistema de administración de carritos es una iniciativa para la seguridad comunitaria para reducir la cantidad de carritos abandonados en nuestras calles y parques. Para obtener más información visite www.waverley.nsw.gov.au

El Informe de fin del plazo es un documento que notifica acerca de los logros de la Municipalidad con respecto al plazo de cuatro años basado en la visión comunitaria para Waverley. El informe completo se encuentra disponible en nuestro sitio web: www.waverley.nsw.gov.au

Queremos agradecerles a nuestros residentes locales que han nominado sus jardines para los Premios a los jardines de 2012. La Municipalidad también desea agradecerles a los comercios locales que han colaborado: Dragonfly Floral Design, Belle Properties Bondi Junction, Bondi Road Fruitologist, Sydney Organic Gardens y Honeysuckle Garden Centre.

¿Está interesado en lo que está pasando en su área y desea dar su opinión? ¿Por qué no forma parte del comité de su distrito local? Llame al 9386 7924 para obtener información acerca de su distrito y horarios de las reuniones.

Comuníquese con el Municipio de Waverley llamando al 9369 8000, visite el sitio www.waverley.nsw.gov.au o llame al Servicio de traducción e interpretación (Translation and Interpreting Service, TIS) al 131 450 para que lo comuniquen con nosotros.

HUNGARIAN

A Waverley tanács együtt a Coles és Woolworth üzletközponttal bevezetett egy bevásárlókocsi használatrendszer a Bondi Junction-ban. Coles és Woolworth bevásárlókocsit már nem lehet egyik központból se kivinni, az utcai kijáratoknál a kerekek lezárulnak. A bevásárlókocsi használatrendszer egy közösségbiztonsági kezdeményezés, hogy kevesebb bevásárlókocsit hagyjanak ott utcáinkon és parkjainkban. További tájékoztatásért keresse fel a www.waverley.nsw.gov.au címet.

A időszakvégi beszámoló az egy okmány, amely beszámoló arról, hogy mit ért el a tanács a négyéves időszakban, amely a közösség Waverley-re vonatkozó elképzelésén alapult. A teljes beszámoló elérhető weboldalunkon a www.waverley.nsw.gov.au címen.

Köszönetet mondunk helyi lakosainknak, akik a 2012-es kertdíjakra jelölték kertjüket. A tanács szeretne szintén köszönetet mondani a helyi üzleteknek, akik ezt támogatták: Dragonfly Floral Design, Belle Properties Bondi Junction, Bondi Road Fruitologist, Sydney Organic Gardens és Honeysuckle Garden Centre.

Érdeklí önt, hogy mi történik a környékén és akar ehhez hozzájárulni? Kapcsolódjon be a helybeli körzeti bizottságba. Hogy megtudja, hogy melyik az ön körzete és hogy mikor találkozhatnak hívja a 9386 7924-es számot.

Hívja a Waverley tanácsot a 9369 8000-ás számon, keresse fel a www.waverley.nsw.gov.au címet vagy hívja a telefonos tolmács szolgálatot a 131 450-es számon, hogy kapcsolják össze velünk.

GREEK

Ο Δήμος του Waverley, σε συνεργασία με τα σουπερμάρκετ Coles και Woolworths και τα εμπορικά κέντρα Eastgate και Westfield, εφαρμόζουν ένα σύστημα διαχείρισης των καροτσιών στο Bondi Junction. Τα καροτσία του Coles και του Woolworths δε θα είναι στο εξής δυνατόν να εγκαταλείπουν κανένα από τα εμπορικά κέντρα. Οι τροχοί θα ακινητοποιούνται σε όλες τις εξόδους προς το δρόμο. Το σύστημα διαχείρισης καροτσιών είναι μια πρωτοβουλία ασφάλειας της κοινότητας προκειμένου να μειωθούν τα εγκαταλελειμένα καροτσία στους δρόμους και τα πάρκα μας. Για περισσότερες πληροφορίες επισκεφτείτε το www.waverley.nsw.gov.au

Ο Απολογισμός του Τέλους της Θητείας [End of Term Report] είναι ένα έγγραφο που αναφέρεται στα πεπραγμένα της δημοτικής αρχής κατά την τετραετή θητεία της και για το όραμά της για την κοινότητα του Waverley. Ο πλήρης απολογισμός είναι διαθέσιμος στο διαδικτυακό τόπο μας: www.waverley.nsw.gov.au

Ευχαριστούμε τους κατοίκους του δήμου που υπέβαλαν υποψηφιότητες για τα Βραβεία Κήπων 2012 [2012 Garden Awards]. Ο Δήμος θα ήθελε επίσης να πει ένα μεγάλο ευχαριστώ στις τοπικές επιχειρήσεις που υποστηρίζουν τα βραβεία – τη Dragonfly Floral Design, τη Belle Properties Bondi Junction, τη Bondi Road Fruitologist, τη Sydney Organic Gardens και το Honeysuckle Garden Centre.

Ενδιαφέρεστε για ό,τι συμβαίνει στην περιοχή σας και θέλετε να εκφράσετε τη γνώμη σας; Γιατί δε συμμετέχετε στην τοπική επιτροπή της εκλογικής σας περιφέρειας; Για να μάθετε ποια είναι η περιφέρειά σας και οι ώρες συναντήσεων, καλέστε το 9386 7924.

Καλέστε το Δήμο του Waverley Council στο 9369 8000, επισκεφτείτε το www.waverley.nsw.gov.au ή τηλεφωνήστε στην TIS στο 131 450 να σας συνδέσει μαζί μας.

SIMPLIFIED CHINESE

韦弗利市议会联合 Coles、Woolworth 及 Eastgate、Westfield 购物中心在 Bondi Junction 共同实施了一项购物车管理系统。Coles、Woolworth 商场内的购物车现已不能推出购物中心，所有街道出口都将设置车轮锁定装置。购物车管理系统是一项社区安全计划，旨在减少被遗弃在街道上和公园内的购物车数量。详情请访问 www.waverley.nsw.gov.au。

《任期结束述职报告》是一份基于韦弗利的社区愿景，对市议会在四年任期内所取得的成果展开报告的文件。登录市议会网站，可查看报告的完整内容：www.waverley.nsw.gov.au。

许多有花园的市民积极报名参加 2012 年度园林大奖的角逐，在此我们要对他们致以谢意。同时，市议会在此对为本次大奖赛给出大力支持的本地企业表示衷心的感谢，它们是 Dragonfly Floral Design、Belle Properties Bondi Junction、Bondi Road Fruitologist、Sydney Organic Gardens 以及 Honeysuckle Garden Centre。

如果您对自己所在区域内正在发生的事务感兴趣，并希望提出自己的意见，可加入当地选区委员会。查询您在区域和委员会会议召开时间，请致电 9386 7924。

欢迎致电 9369 8000 联系韦弗利市议会，或拨打 131 450 呼叫全澳翻译与传译服务 (TIS)，转接至市议会。您也可以访问市议会网站 www.waverley.nsw.gov.au。

RUSSIAN

Совет Уэверли, совместно с магазинами Coles, Woolworths, Eastgate и Westfield, внедрил систему контроля тележек в районе Бондай Джанкшен (Bondi Junction). Тележки супермаркетов Coles и Woolworths теперь невозможно вывезти за пределы этих центров, поскольку на выходах на все улицы замкнется движение колес. Система контроля тележек – это инициатива по улучшению безопасности общины, направленная на уменьшение количества брошенных на улицах и в парках тележек. Более подробную информацию можно получить на сайте: www.waverley.nsw.gov.au

«Отчет периода» – это отчет о достижениях Совета за время четырех-летнего периода, запланированного в проекте развития общины Уэверли. С полным отчетом можно ознакомиться на сайте: www.waverley.nsw.gov.au

Выражаем благодарность нашим местным жителям, чьи сады приняли участие в конкурсе «Премия садовода» в 2012 г. (Garden Awards 2012). Совет также выражает особую благодарность местным компаниям, оказавшим поддержку – в частности, фирмам Dragonfly Floral Design, Belle Properties Bondi Junction, Bondi Road Fruitologist, Sydney Organic Gardens и Honeysuckle Garden Centre.

Вас интересует происходящее в вашем районе, и вы хотите выразить свое мнение? Почему бы не поучаствовать в исполнительном комитете своего района? Чтобы узнать о принадлежности к району и узнать время собраний, звоните по номеру 9386 7924.

Звоните в Совет Уэверли (Waverley Council) по номеру 9369 8000, посетите www.waverley.nsw.gov.au или позвоните в Службу переводов TIS по номеру 131 450, и они соединят вас с нами.



What's on in Waverley

SEPTEMBER

Waverley Community and Seniors Centre monthly coach tour

Saturday, 15 September

Bowral's Tulips at Corbett Gardens and Greenbrier Park

For more information or to book your spot call **9386 7900**.

'Books, movies and more' discussion group for seniors

20 September, 18 October, 15 November, 10.30am–12noon
Waverley Library, 32–48 Denison Street, Bondi Junction

Fun and relaxed drop-in discussion group for seniors who love books and movies. Free session and refreshments provided. For more information call **9386 7709** or visit www.waverley.nsw.gov.au/library

Waverley Library Author Talk: *The Spice Islands* with Ian Burnet

Thursday 20 September,
6.30–7.30pm

Waverley Library Theatrette, 32–48 Denison Street, Bondi Junction

An epic tale of greed and of wealth so fabulous that it changed the world's balance of power: this is the story of the Spice Islands. Ian Burnet spent more than 20 years living, working and travelling in Indonesia; join him for this intriguing tale of the legendary Spice Islands. \$5 on the door, includes nibbles and wine.

Waverley Library Sunday Book Sales

30 September, 28 October and 25 November, 1–4pm

Waverley Library Foyer, 32–48 Denison Street, Bondi Junction

Great range of second-hand books at discount prices! All proceeds to Friends of Waverley Library for more great library programs and events.

Spring School Holiday fun

24 September – 5 October

Gather the gang and get involved in our great program of events. Fun for all ages with great workshops and activities at low prices. Visit www.waverley.nsw.gov.au for more details and booking information.

OCTOBER

'Remember When' seniors storytelling

4 October, 1 November,
10.30am–12noon

Waverley Library, 32–48 Denison Street, Bondi Junction

Share your memories of Waverley in these guided storytelling sessions with John Hockney. Workshops are free and materials are provided. For more information call **9386 7709** or visit www.waverley.nsw.gov.au/library

Waverley Community and Seniors Centre monthly coach tour

Monday 8 – Saturday 13 October
Holiday tour to Snowy Mountains

For more information or to book your spot call **9386 7900**.

Breakfast on Bondi

Sunday 14 October,
5.30–9am, Bondi Beach

Join Sydneysiders and visitors alike to bring in the dawn on Sunday, October 14.

Visitors bring a picnic breakfast and sit on the sands with family and friends (or you can pick up coffee, drinks and other treats from a series of local restaurant and cafe stalls).

Registration for the event is free at www.cravesydney.com/breakfastonbondi

NOVEMBER

Local studies history walks: True Crime

Sunday 4 November, 10am–2pm

Led by Kimberly O'Sullivan. Bookings essential. Call **9386 7744** or kimberlyo@waverley.nsw.gov.au

Bondi Short Film Festival

Saturday 24 November, 7pm
Bondi Pavilion, Queen Elizabeth Park Drive, Bondi Beach

This annual local film festival showcases short films from around Australia. The Bondi Short Film Festival prides itself on presenting the highest quality short films Australia has to offer – from stunning animations to powerful dramas, cutting edge documentaries and quirky comedies. For more details including times visit www.bondishortfilmfestival.com. Bookings at www.moshtix.com.au or call **1300 GET TIX (438 849)**.

Ocean Pacifika Festival

Sunday 25 November, 11am
Bondi Beach

Celebrating this years' Ocean Care Day and the coming summer. There will be something for everyone at this free festival including a full entertainment program of Pacific Island dance and music, children's craft workshops, arts and crafts stalls, wandering performers, a rock pool ramble, a beach cleanup, documentary films and a host of information and environmental stalls.

For more information contact the Bondi Pavilion on **8362 3400** or visit www.waverley.nsw.gov.au

Waverley In Focus
is a free quarterly
newsletter published
by Waverley Council

